

Product datasheet for **RG236600**

LYPD4 (NM_001291419) Human Tagged ORF Clone

Product data:

Product Type:	Expression Plasmids
Product Name:	LYPD4 (NM_001291419) Human Tagged ORF Clone
Tag:	TurboGFP
Symbol:	LYPD4
Synonyms:	SMR
Mammalian Cell Selection:	Neomycin
Vector:	pCMV6-AC-GFP (PS100010)
E. coli Selection:	Ampicillin (100 ug/mL)
ORF Nucleotide Sequence:	>RG236600 representing NM_001291419. Blue=ORF Red=Cloning site Green=Tag(s)

```
GCTCGTTTAGTGAACCGTCAGAATTTTGTAAACGACTCACTATAGGGCGCCGGGAATTCGTCGACTG
GATCCGGTACCGAGGAGATCTGCCGCCCGATCGCC
ATGGGACCCAGCATTTGAGACTTGTCAGCTGTTCTGCCTTCTAGGGCCATCTCCACTCGCCTCGT
ATGTCCTGTGGGGCTGGATGCTATAAGACCCAGAAAGGGACTGCAAGGGGAGTCGTGGGCTTTAAAGGC
TGCAGCTCGTCTTCGTCTTACCCTGCGCAATCTCCTACCTGTTTCCCCACCCGGAGTGTCCATTGCC
TCCTACAGTCGCGTCTGCCGGTCTTATCTCTGCAACAACCTCACCAATTTGGAGCCTTTTGTGAACTC
AAGGCCAGCACTCCTAAGTCTATCACATCTGCGTCCTGTAGCTGCCCGACCTGTGTGGCGAGCACATG
AAGGATTGCCTCCAAATTTTGTACCCTAATCTTGGCCCTTGGCTGCTTCTACGTGTTACAGTTCC
ACCTTAAATTTACAGGCAGGGTTTCTCAATACCACCTTCCTCCTCATGGGGTGTGCTCGTGAACATAAC
CAGCTTTTAGCAGATTTTCATCATATTGGGAGCATCAAAGTGACTGAGGTCTCAACATCTTAGAGAAG
TCTCAGATTGTTGGTGCAGCATCTCCAGGCAAGATCCTGCTTGGGGTGTGCTTAGGCCTCTGTTT
GCCTTCAGGGAC
ACGCGTACGCGGCCGCTCGAG - GFP Tag - GTTAAAC
```



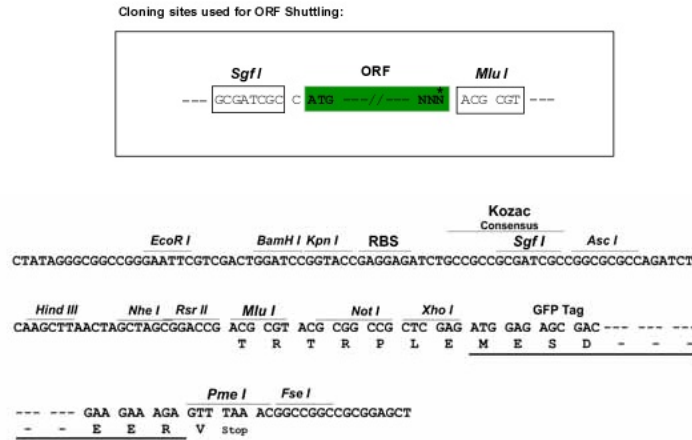
[View online »](#)

Protein Sequence: >Peptide sequence encoded by RG236600
 Blue=ORF Red=Cloning site Green=Tag(s)

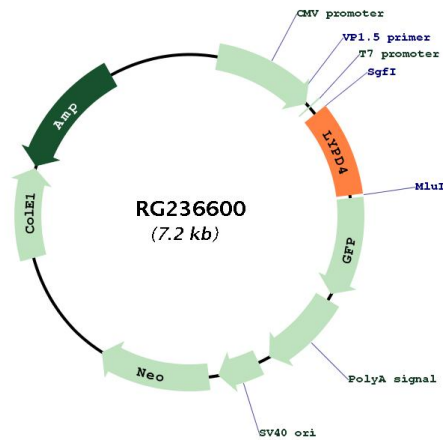
MGPQHLRLVQLFCLLGAISTLPRMSCGAGCYKTQKGTARGVVGFKGCSSSSSYPAQISYLVSPPGVSIA
 SYSRVCRSYLCNNLTNLEPFVKLKASTPKSITSASCSCPTCVGEHMKDCLPNFVTTNSCPLAASTCYSS
 TLKFQAGFLNTTFLLMGCAREHNQLLADFHHIGSIKIVTEVLNILEKSQIVGAASSRQDPAWGVVLLGLLF
 AFRD
 TRTRPLEMESDESGLPAMEIECRITGTLNGVEFELVGGEGTPEQGRMTNKMSTKGALTFSPYLLSHV
 MGYGFYHFGTYPSGYENPFLHAINNGGYTNTRIEKYEDGGVLHVSFSYRYEAGRVIIGDFKVMGTGFPED
 SVIFTDKIIRSNAVTEHLHPMGDNDLDGSFTRTFSLRDGGYSSVVDSHMHFKSAIHPSILQNGGPMFA
 FRRVEEDHSNTELGIVEYQHAFKTPDADAGEERV

Restriction Sites: SgfI-MluI

Cloning Scheme:



Plasmid Map:



ACCN: NM_001291419

ORF Size:	633 bp
OTI Disclaimer:	The molecular sequence of this clone aligns with the gene accession number as a point of reference only. However, individual transcript sequences of the same gene can differ through naturally occurring variations (e.g. polymorphisms), each with its own valid existence. This clone is substantially in agreement with the reference, but a complete review of all prevailing variants is recommended prior to use. More info
OTI Annotation:	This clone was engineered to express the complete ORF with an expression tag. Expression varies depending on the nature of the gene.
Components:	The ORF clone is ion-exchange column purified and shipped in a 2D barcoded Matrix tube containing 10ug of transfection-ready, dried plasmid DNA (reconstitute with 100 ul of water).
RefSeq:	NM_001291419.1 , NP_001278348.1
RefSeq Size:	1067 bp
RefSeq ORF:	636 bp
Locus ID:	147719
UniProt ID:	Q6UWN0
Cytogenetics:	19q13.2
MW:	23 kDa