

## Product datasheet for **RG236157**

### PIFO (NM\_001300831) Human Tagged ORF Clone

#### Product data:

**Product Type:** Expression Plasmids  
**Product Name:** PIFO (NM\_001300831) Human Tagged ORF Clone  
**Tag:** TurboGFP  
**Symbol:** PIFO  
**Synonyms:** C1orf88; pitchfork  
**Mammalian Cell Selection:** Neomycin  
**Vector:** pCMV6-AC-GFP (PS100010)  
**E. coli Selection:** Ampicillin (100 ug/mL)  
**ORF Nucleotide Sequence:** >RG236157 representing NM\_001300831.  
Blue=ORF Red=Cloning site Green=Tag(s)

```
GCTCGTTTAGTGAACCGTCAGAATTTGTAAACGACTCACTATAGGGCGCCGGGAATTCGTCGACTG
GATCCGGTACCGAGGAGATCTGCCGCCGCGATCGCC
ATGTGCTTCAGCAGAGCAGACGCTGCGGATAACTACCCTTTTGGAAACATGTCAACAGAGGAACTTTTT
CCTCACTTCCATCCCCGAATTTGATTGGGAACAAGTTTGTCCCTCTTAGGGGATCACCCACAGAGGG
CCTGGGTGTTATTTTCAGATGAAATGACACCTCATGCAGGCAGGTACCAGAAAGTAAGTCTCAGCAG
GAAAAACACAAACAAAATTTGCTCCATTAATGTCTTGGTGCCTCGATTAAGAACTACCCAAAGGAC
ACTTACTATCCCAGCCCTGGTGCATACAACCCAGAGAAGAAGCCACCGCCAAAAATTCCTGGCCAATG
AAATTTGGATCTCCAGACTGGGCTCAGGTTCCATGTCTACAGAAAAGAACCTAAAAGCTGAGCTGTCC
ACAGACAAAGACTTTAGAAAGCATCGGAACCGTGTGGCCTACCTAAGCCTGATTATAAT
ACGCGTACGCGGCCGCTCGAG - GFP Tag - GTTTAAAC
```

**Protein Sequence:** >Peptide sequence encoded by RG236157  
Blue=ORF Red=Cloning site Green=Tag(s)

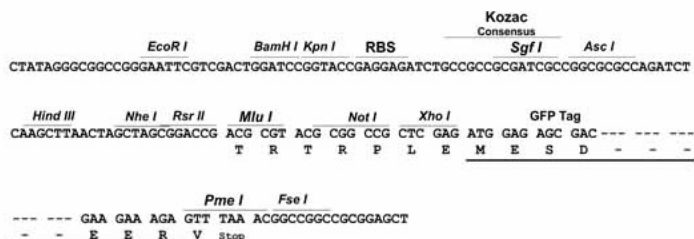
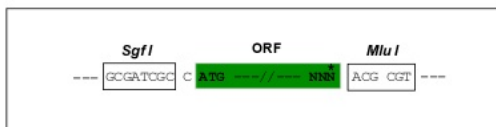
```
MCFSRADAADNYPFGTCQQRKLFPHFHPNLIIGNKFVPLRGSPhRGPGCYFSDEMTPHAGRYQKVSPQQ
EKHKQNFAPFNLVPRFKNYPKDTYYPSGAYNPEKPPPKIAWPMKFGSPDWAQVPCQLQKRTLKAELS
TDKDFRKHNRVAYLSLYN
TRTRPLEMESDESGLPAMEIECRITGTLNGVEFELVGGEGTPEQGRMTNKMSTKGALTFSPYLLSHV
MGYGFYHFGTYPYSGYENPFLHAINNGGYNTRIEKYEDGGVLHVFSYRYEAGRVIGDFKVMGTGFPED
SVIFTDKIIRSNATVEHLHPMGDNDLDGSFTRTFSLRDGGYSSVVDSDSHMHFSAIHPSILQNGGPMFA
FRRVEEDHSNTELGIVEYQHAFKTPDADAGEERV
```

**Restriction Sites:** SgfI-MluI

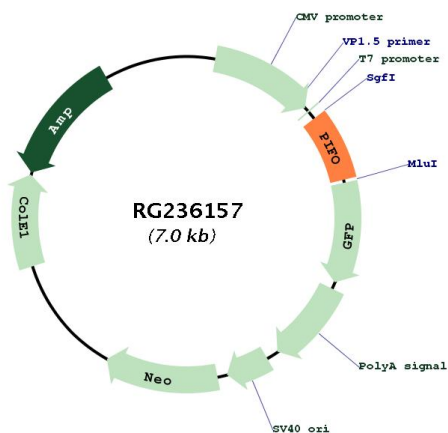


Cloning Scheme:

Cloning sites used for ORF Shuttling:



Plasmid Map:



ACCN:

NM\_001300831

ORF Size:

474 bp

OTI Disclaimer:

The molecular sequence of this clone aligns with the gene accession number as a point of reference only. However, individual transcript sequences of the same gene can differ through naturally occurring variations (e.g. polymorphisms), each with its own valid existence. This clone is substantially in agreement with the reference, but a complete review of all prevailing variants is recommended prior to use. [More info](#)

OTI Annotation:

This clone was engineered to express the complete ORF with an expression tag. Expression varies depending on the nature of the gene.

<b>Components:</b>	The ORF clone is ion-exchange column purified and shipped in a 2D barcoded Matrix tube containing 10ug of transfection-ready, dried plasmid DNA (reconstitute with 100 ul of water).
<b>RefSeq:</b>	<u>NM_001300831.1</u> , <u>NP_001287760.1</u>
<b>RefSeq Size:</b>	2260 bp
<b>RefSeq ORF:</b>	477 bp
<b>Locus ID:</b>	128344
<b>UniProt ID:</b>	<u>Q8TCI5</u>
<b>Cytogenetics:</b>	1p13.2
<b>MW:</b>	18.8 kDa
<b>Gene Summary:</b>	During primary cilia disassembly, involved in cilia disassembly. Required specifically to control cilia retraction as well as the liberation and duplication of the basal body/centrosome. May act by stimulating AURKA activity at the basal body in a cell cycle-dependent manner. [UniProtKB/Swiss-Prot Function]