

Product datasheet for **RG235486**

NDUFA5 (NM_001282422) Human Tagged ORF Clone

Product data:

Product Type:	Expression Plasmids
Product Name:	NDUFA5 (NM_001282422) Human Tagged ORF Clone
Tag:	TurboGFP
Symbol:	NDUFA5
Synonyms:	B13; CI-13kB; CI-13KD-B; NUFM; UQOR13
Mammalian Cell Selection:	Neomycin
Vector:	pCMV6-AC-GFP (PS100010)
E. coli Selection:	Ampicillin (100 ug/mL)
ORF Nucleotide Sequence:	>RG235486 representing NM_001282422. Blue=ORF Red=Cloning site Green=Tag(s)

GCTCGTTTAGTGAACCGTCAGAATTTTGTAAACGACTCACTATAGGGCGCCGGGAATTCGTCGACTG
GATCCGGTACCGAGGAGATCTGCCGCC**CGGATCGCC**
ATGGCGGGTGTGCTGAAGAAGACCACTGGCCTTGTGGGATTGGCTGTGTGCAATACTCCTCACGAGGAA
CCAGATGTTAAAAAATTAGAAGACCACTTCAAGGCGGTCAATTAGAAGAGGTGATTCTTCAGGCTGAA
CATGAATAAATCTGGCAAGAAAAATGAGGGAATGGAACTATGGGAGCCATTAGTGAAGAGCCTCT
GCCGATCAGTGGAAATGGCCAATA
ACGCGTACGCGGCCGCTCGAG - GFP Tag - GTTTAAAC

Protein Sequence:	>Peptide sequence encoded by RG235486 Blue=ORF Red=Cloning site Green=Tag(s)
-------------------	---

MAGVLKKTGLVGLAVCNTPHEEPDVKKLEDQLQGGQLEEVILQAEHELNLARKMREWKLWEPLVEEPP
ADQWKWPI
TRTRPLEMESDESGLPAMEIECRITGTLNGVEFELVGGEGTPEQGRMTNKMSTKGALTFSPYLLSHV
MGYGFYHFGTYPSTYENPFLHAINNGGYNTRIEKYEDGGVLHVSFSYRYEAGRVIGDFKVMGTGFPEP
SVIFTDKIIRSNATVEHLHPMGDNDLDGSFTRTFLRDGGYSSVVDSHMHFKSAIHPSILQNGGPMFA
FRRVEEDHSNTELGIVEYQHAFKTPDADAGEERV

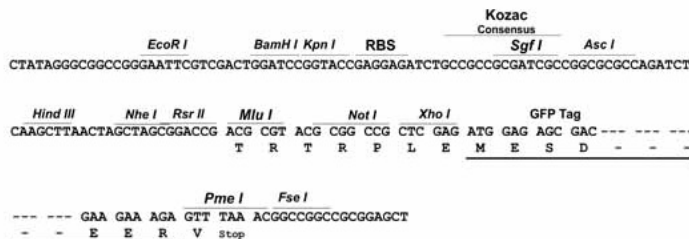
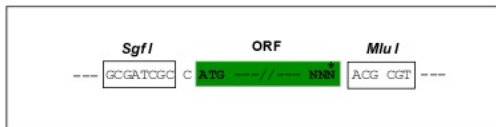
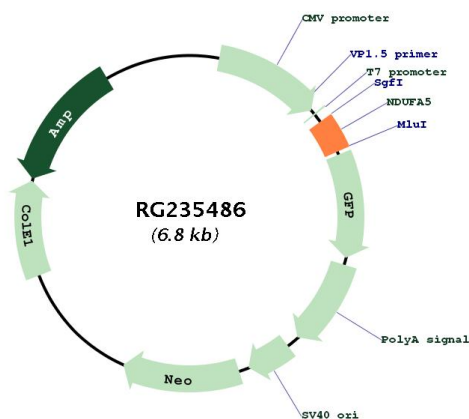
Restriction Sites:	Sgfl-MluI
--------------------	-----------



[View online »](#)

Cloning Scheme:

Cloning sites used for ORF Shutting:


Plasmid Map:

ACCN: NM_001282422

ORF Size: 231 bp

OTI Disclaimer: The molecular sequence of this clone aligns with the gene accession number as a point of reference only. However, individual transcript sequences of the same gene can differ through naturally occurring variations (e.g. polymorphisms), each with its own valid existence. This clone is substantially in agreement with the reference, but a complete review of all prevailing variants is recommended prior to use. [More info](#)

OTI Annotation:	This clone was engineered to express the complete ORF with an expression tag. Expression varies depending on the nature of the gene.
Components:	The ORF clone is ion-exchange column purified and shipped in a 2D barcoded Matrix tube containing 10ug of transfection-ready, dried plasmid DNA (reconstitute with 100 ul of water).
RefSeq:	NM_001282422.2 , NP_001269351.1
RefSeq Size:	5485 bp
RefSeq ORF:	234 bp
Locus ID:	4698
UniProt ID:	Q16718
Cytogenetics:	7q31.32
Protein Pathways:	Alzheimer's disease, Huntington's disease, Metabolic pathways, Oxidative phosphorylation, Parkinson's disease
MW:	9.3 kDa
Gene Summary:	This nuclear gene encodes a conserved protein that comprises the B13 subunit of complex I of the mitochondrial respiratory chain. The encoded protein localizes to the inner mitochondrial membrane, where it is thought to aid in the transfer of electrons from NADH to ubiquinone. Alternative splicing results in multiple transcript variants. There are numerous pseudogenes of this gene on chromosomes 1, 3, 6, 8, 9, 11, 12, and 16. [provided by RefSeq, Apr 2014]