

Product datasheet for **RG235084**

NCX1 (SLC8A1) (NM_001252624) Human Tagged ORF Clone

Product data:

Product Type:	Expression Plasmids
Product Name:	NCX1 (SLC8A1) (NM_001252624) Human Tagged ORF Clone
Tag:	TurboGFP
Symbol:	NCX1
Synonyms:	NCX1
Mammalian Cell Selection:	Neomycin
Vector:	pCMV6-AC-GFP (PS100010)
E. coli Selection:	Ampicillin (100 ug/mL)



[View online »](#)

ORF Nucleotide Sequence:

>RG235084 representing NM_001252624
 Red=Cloning site Blue=ORF Green=Tags(s)

TTTTGTAATACGACTCACTATAGGGCGGCCGGAATTCGTCGACTGGATCCGGTACCGAGGAGATCTGCC
 GCC**CGATCGCC**

ATGTACAACATGCGGCGATTAAGTCTTTACCCACCTTTCAATGGGATTCATCTGTAGTTACTGTGA
 GTCTTTATTTTCCCATGTGGACCATGTAATTGCTGAGACAGAAATGGAAGGAGAAGGAAATGAAACTGG
 TGAATGTACTGGATCATATTACTGTAAGAAAGGGGTGATTTTGCCCATTTGGGAACCCCAAGACCTTCT
 TTTGGGGACAAAATTGCTAGAGCTACTGTGATTTTGTGGCCATGGTCTACATGTTTCTGGAGTCTCTA
 TCATAGCTGATCGGTTTCTGCTCTATAGAAGTCATCACATCTCAAGAAAAAGAAATAACCATAAAGAA
 ACCCAATGGAGAGACCACCAAGACAACGTGAGGATCTGGAATGAAACAGTTTCTAACCTGACCTTGATG
 GCCCTGGGATCTTCTGCTCCTGAGATTCTCTTTCAGTAATTGAAGTGTGTGGCCATAAATTCACCTGCAG
 GAGACCTCGGTCCTAGCACCATCGTGGGAAGTGTGCATTCAATATGTTTCATCATTATTGCACTCTGTGT
 TTATGTGGTGCCTGACGGAGAGACAAGGAAGATTAAGCATTTCGCTGTCTTCTTTGTGACAGCAGCTGG
 AGCATCTTTGCCTACACCTGGCTTACATTATTTTGTCTGTCATATCTCCTGGTGTGTGGAGGTCTGGG
 AAGGTTTGCTTACTTTCTTCTTCTTCCCATCTGTGTTGTGTTCCGCTGGGTAGCGGATAGGAGACTTCT
 GTTTTACAAGTATGTCTACAAGAGGTATCGAGCTGGCAAGCAGAGGGGGATGATTATTGAACATGAAGGA
 GACAGGCCATCTTCTAAGACTGAAATGAAATGGACGGGAAAGTGGTCAATTCTCATGTTGAAAATTTCT
 TAGATGGTGTCTGGTTCTGGAGGTGGATGAGAGGGACCAAGATGATGAAGAAGCTAGGCGAGAAATGGC
 TAGGATTCTGAAGAACTTAAGCAGAAGCATCCAGATAAAGAAAATAGAGCAATTAATAGAATTAGCTAAC
 TACCAAGTCTAAGTCAGCAGCAAAAAAGTAGAGCATTTTATCGCATTCAAGCTACTCGCCTCATGACTG
 GAGCTGGCAACATTTTAAAGAGCATGCAGCTGACCAAGCAAGGAAGGCTGTCAGCATGCACGAGGTCAA
 CACTGAAGTGACTGAAAATGACCCTGTTAGTAAGATCTTCTTTGAACAAGGGACATATCAGTGTCTGGAG
 AACTGTGGTACTGTGGCCCTTACCATTATCCGAGAGGTGGTATTGACTAACACTGTGTTTGTGACT
 TCAGAACAGAGGATGGCAGCAAAATGCTGGGTCTGATTATGAATTTACTGAAGGAACTGTGGTGTTTAA
 GCCTGGTATACCCAGAAGGAAATCAGAGTGGGTATCATAGATGATGATATCTTTGAGGAGGATGAAAAT
 TTCCTTGTGCATCTCAGCAATGTCAAAGTATCTTCTGAAGCTTCAAGATGGCATACTGGAAGCCAATC
 ATGTTTCTACACTTGCTTGCTCGGATCTCCCTCCACTGCCACTGTAACATTTTTGATGATGACCACGC
 AGGCATTTTTACTTTGAGGAACCTGTGACTCATGTGAGTGAGAGCATTGGCATCATGGAGGTGAAAGTA
 TTGAGAACATCTGGAGCTCGAGGAAATGTTATCGTTCCATATAAAACCATCGAAGGGACTGCCAGAGGTG
 GAGGGGAGGATTTGAGGACACTTGTGGAGAGCTCGAATTCAGAAATGATGAAATTTGTAAGATCATTAC
 CATTAGAATATTTGACCGTGAGGAATATGAGAAAGAGTGCAAGTTTCTCCCTTGTGCTTGAGGAACAAAA
 TGGATAAGAAGAGGAATGAAAGGTGGCTTACAATAACAGGAAAAACCTGTTTGGCCAACCTGTCTTCA
 GGAAGGTTTCATGCTAGAGAACATCCGATTTCTCTACTGTAATCACCATTCAGAGCAATATGATGACAA
 GCAGCCACTGACCAGCAAAGAGGAAGAGGAGAGGGCATTGCAGAAATGGGGCGCCCATCTGGGAGAG
 CACACCAAGTTGGAAGTATCATTGAAGAATCCTATGAATTCAGAGTACTGTGGACAAACTCATTAAAG
 AGACAAACCTGGCCCTTGTGTTGGGACTAACAGCTGGAGAGAACAGTTTCAAGCTATCACTGTGAGT
 TGCTGGGGAAGATGATGACGACGATGAATGTGGGGAAGAGAAGCTGCCCTCCTGTTTCGATTACGTGATG
 CACTTTCTGACTGTGTTCTGGAAGGTCTGTTTGCCTTCGTCCTCCCTACTGAATACTGGAATGGCTGGG
 CGTGTTCATTGTCTCCATCCTCATGATTGGCCTACTGACAGCTTTCATTGGAGACCTGGCTTCCCACTT
 TGGCTGCACCATTTGGCCTGAAAGATTCTGTGACTGCAGTCGTGTTTCGTCGCACTTGAACATCAGTGCCA
 GACACATTTGCCAGCAAAGTGGCAGCCACCCAGGACCAGTATGCAGACGCTCCATAGGTAACGTACCGG
 GCAGCAACGCGGTGAATGTCTTCTGGGAATCGGTGTGGCCTGGTCCATCGTGCATCTACCACGCAGC
 CAATGGGGAACAGTTCAAAGTGTCCCTGGCACACTAGCTTCTCTGTCACTCTCTTACCATTTTTGCT
 TTCATCAATGTGGGGTGTGCTGTATCGGCGGAGGCCAGAAATCGGAGGTGAGCTGGGTGGCCCCGGA
 CTGCCAAGCTCCTCACATCCTGCCTCTTTGTGCTCCTATGGCTTGTACATTTTCTTCTCCTCCCTGGA
 GGCTACTGCCACATAAAAGGCTTC

ACGCGTACGCGGCCGCTCGAG – GFP Tag – GTTTAA

Protein Sequence: >RG235084 representing NM_001252624
Red=Cloning site Green=Tags(s)

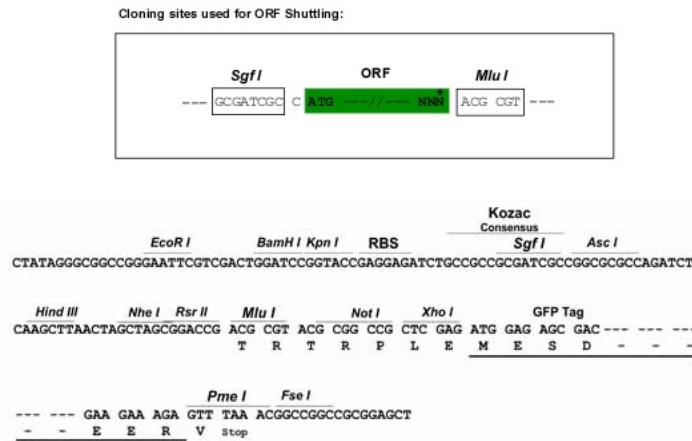
MYNMRRLSLSPTFSMGFHLLVTVSLLFVSHVDHVAETEMEGEGNETGECTGSYYCKKGVILPIWEPQDPS
 FGDKIARATVYFVAMVYMFVFLGVSIIADRFMSSIEVITSQEKEITIKKPNGETTKTTVRIWNETVSNLTLM
 ALGSSAPEILLSVIEVCGHNFTAGDLGPSTIVGSAFNMFI IIALCVYVVPDGETRRIKHLRVFFVTAAM
 SIFAYTWLYIILSVISPGVVEVWEGLL TFFFFPICVVF AWWADRRL LFYKYVYKRYRAGKQRGMIEHEG
 DRPSSKTEIEMDGKVVNSHVENFLD GALVLEVDERDQDDEEARREMARILKELKQKHPDKEIEQLIELAN
 YQVLSQQQKSRAFYRIQATRLMTGAGNILKRHAADQARKAVSMHEVNTVENDPVSKIFFEQGTQYQCLE
 NCGTVALTIIRGGDLTNTVFVDFRTEDGTANAGSDYEFTEGTVVFKPGDTQKEIRVGIIDDDIFEEDEN
 FLVHLSNVKVSSEASEDGILEANHVSTLACLGPSTATVTIFDDDHAGIFTFEEPVTHVSESIGIMEVKV
 LRTSGARGNVIVPYKTIIEGTARGGGEDFEDTCGELEFQNDIVKIIITIRIFDREEYEKESFSLVLEPK
 WIRRMKGGFITITGKYLFGQPVFRKVKHAREHPILSTVITIADEYDDKQPLTSKEEEERRIAEMGRPILGE
 HTKLEVIIEESYEFKSTVDKLIKKNLALVVG TNSWREQF IEAITVSAGEDDDDDCGEEKLPSCFDYVM
 HFLTVFWKVLFAFVPPTEYWNGWACFIVSILMIGLLTAFIGDLASHFGCTIGLKDSVTAVFVALGTSVP
 DTFASKVAATQDQYADASIGNVTGSNAVNVFLGIGVAWSIAAIYHAANGEQFKVSPGTLAFSVTLFTIFA
 FINVGVLLYRRRPEIGGELGGPRTAKLLTSCLFVLLWLLYIFFSSLEAYCHIKGF

TRTRPLE – GFP Tag – V

Restriction Sites:

SgfI-MluI

Cloning Scheme:

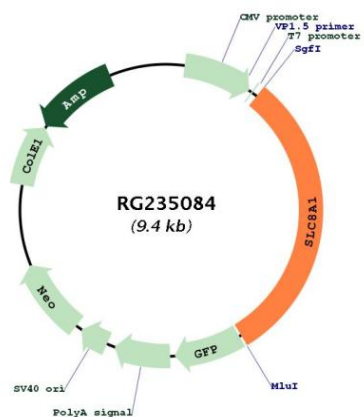


ACCN: NM_001252624

ORF Size: 2895 bp

OTI Disclaimer:	The molecular sequence of this clone aligns with the gene accession number as a point of reference only. However, individual transcript sequences of the same gene can differ through naturally occurring variations (e.g. polymorphisms), each with its own valid existence. This clone is substantially in agreement with the reference, but a complete review of all prevailing variants is recommended prior to use. More info
OTI Annotation:	This clone was engineered to express the complete ORF with an expression tag. Expression varies depending on the nature of the gene.
Components:	The ORF clone is ion-exchange column purified and shipped in a 2D barcoded Matrix tube containing 10ug of transfection-ready, dried plasmid DNA (reconstitute with 100 ul of water).
Reconstitution Method:	<ol style="list-style-type: none">1. Centrifuge at 5,000xg for 5min.2. Carefully open the tube and add 100ul of sterile water to dissolve the DNA.3. Close the tube and incubate for 10 minutes at room temperature.4. Briefly vortex the tube and then do a quick spin (less than 5000xg) to concentrate the liquid at the bottom.5. Store the suspended plasmid at -20°C. The DNA is stable for at least one year from date of shipping when stored at -20°C.
RefSeq:	NM_001252624.2
RefSeq Size:	6029 bp
RefSeq ORF:	2898 bp
Locus ID:	6546
UniProt ID:	P32418
Cytogenetics:	2p22.1
Protein Families:	Transmembrane
Protein Pathways:	Arrhythmogenic right ventricular cardiomyopathy (ARVC), Calcium signaling pathway, Cardiac muscle contraction, Dilated cardiomyopathy, Hypertrophic cardiomyopathy (HCM)
Gene Summary:	In cardiac myocytes, Ca(2+) concentrations alternate between high levels during contraction and low levels during relaxation. The increase in Ca(2+) concentration during contraction is primarily due to release of Ca(2+) from intracellular stores. However, some Ca(2+) also enters the cell through the sarcolemma (plasma membrane). During relaxation, Ca(2+) is sequestered within the intracellular stores. To prevent overloading of intracellular stores, the Ca(2+) that entered across the sarcolemma must be extruded from the cell. The Na(+)-Ca(2+) exchanger is the primary mechanism by which the Ca(2+) is extruded from the cell during relaxation. In the heart, the exchanger may play a key role in digitalis action. The exchanger is the dominant mechanism in returning the cardiac myocyte to its resting state following excitation.[supplied by OMIM, Apr 2004]

Product images:



Circular map for RG235084