

Product datasheet for **RG234671**

BORIS (CTCFL) (NM_001269041) Human Tagged ORF Clone

Product data:

Product Type:	Expression Plasmids
Product Name:	BORIS (CTCFL) (NM_001269041) Human Tagged ORF Clone
Tag:	TurboGFP
Symbol:	CTCFL
Synonyms:	BORIS; CT27; CTCF-T; dj579F20.2; HMGB1L1
Mammalian Cell Selection:	Neomycin
Vector:	pCMV6-AC-GFP (PS100010)
E. coli Selection:	Ampicillin (100 ug/mL)



[View online »](#)

ORF Nucleotide
Sequence:

>RG234671 representing NM_001269041
Red=Cloning site Blue=ORF Green=Tags(s)

TTTTGTAATACGACTCACTATAGGGCGGCCGGAATTCGTCGACTGGATCCGGTACCGAGGAGATCTGCC
GCC**CGGATCGCC**

ATGGCAGCCACTGAGATCTCTGTCTTTCTGAGCAATTCACCAAGATCAAAGAACTCGAGTTGATGCCGG
AAAAAGGCCTGAAGGAGGAGGAAAAAGACGGAGTGTGCAGAGAGAAAGACCATCGGAGCCCTAGTGAGTT
GGAGGCCGAGCGTACCTCTGGGGCCTTCCAGGACAGCGTCTGGAGGAAGAAGTGGAGCTGGTGCTGGCC
CCCTCGGAGGAGAGCGAGAAGTACATCCTGACCCTGCAGACGGTGCACCTTCACTTCTGAAGCTGTGGAGT
TGCAGGATATGAGCTTGCTGAGCATACAGCAGCAAGAAGGGTGCAGGTGGTGGTGAACAGCCTGGCCC
TGGGTTGCTGTGGCTTGAAGGAAGGGCCCCGCGAGCCTGCAGCAGTGTGTGGCCATTAGTATCCAGCAA
GAGCTGTACTCCCGCAAGAGATGGAGGTGTTGCAGTTCACGCTCTAGAGGAGAATGTGATGGTGGCCA
GTGAAGACAGTAAGTTAGCGGTGAGCCTGGCTGAAACTACTGGACTGATCAAGCTCGAGGAAGAGCAGGA
GAAGAACCAGTTATTGGCTGAAAGAACAAGGAGCAGCTCTTTTTTGTGGAACAATGTCAGGAGATGAA
AGAAGTGACGAAATTGTTCTCACAGTTTCAAATTCAAATGTGGAAGAACAAGAGGATCAACCTACAGCTG
GTCAAGCAGATGCTGAAAAGGCCAAATCTACAAAAATCAAAGAAAGACAAGGGGAGCAAAAGGAACCTT
CCACTGTGATGTCTGCATGTTACCTCTTCTAGAATGTCAAGTTTAAATCGTCATATGAAAACCTCACACC
AGTGAGAAGCCTCACCTGTGCACCTCTGCCTGAAAACCTTCCGTACGGTCACTCTGCTGCGGAACCATG
TTAACACCCACACAGGAACCGGCCCTACAAGTGTAACTGCAACATGGCATTGTCACCAGTGGAGA
ACTCGTCCGACACAGGCGCTATAAACAATACTCATGAGAAACCCTTTAAATGTTCCATGTGCAAGTATGCC
AGTGTGGAGGCAAGTAAATTGAAGCGCCATGTCGATCCCACACTGGGGAGCGCCCTTTTCAGTGTGGCC
AGTGCAGCTATGCCAGCAGAGATACCTACAAGCTGAAACGCCACATGAGAACGCACTCAGGTGAGAAGCC
TTACGAATGCCACATCTGCCACACCCGCTTCAACCAGAGCGGGACCATGAAAATACATATTCTGCAGAAA
CACGGCGAAAATGTCCCAAAATACCAGTGTCCCAATTGTGCCACCATCATTGCACGAAAAGCGACCTAC
GTGTGCATATGCGCAACTTGCATGCTTACAGCGTGCAGAGCTGAAATGCCGCTACTGTTCTGCTGCTT
CCATGAACGCTATGCCCTCATTACAGCACCAGAAAACCTATAAGAATGAGAAGAGGTTCAAGTCAAAACAC
TGCAGTTATGCCTGCAAGCAGGAACGTATGACCGCTCACATTCGTACCCACACTGGAGAGAAACCAT
TCACCTGCCTTTCTTGAATAAATGTTCCGACAGAAGCAACTTCTAAACGCTCACTTCAGGAAATACCA
CGATGCAAAATTCATCCCGACTGTTTACAATGCTCCAAGTGTGGCAAAGGCTTTTCCCGCTGGATTAAC
CTGCACAGACATTCGGAGAAGTGTGGATCAGGGGAAGCAAAGTCCGCTGCTTTCAGGAAAGGGAAGAAGAA
CAAGAAAGAGGAAGCAGACCATCCTGAAGGAAGCCACAAAGGGTCAAGAGGAAGCTGCGAAGGGATGGAA
GGAAGCCGCAACGGAGACGAAGCTGCTGCTGAGGAGGCTTCCACCACGAAGGGAGAACAGTTCCAGGA
GAGATGTTTCTGCTGCCTGCAGAGAAACCACAGCCAGAGTCAAAGAGGAAGTGGATGAAGGCGTGACCT
GTGAAATGCTCCTCAACACGATGGATAAG

ACGCGTACGCGGCCGCTCGAG - GFP Tag - GTTTAA

Protein Sequence: >RG234671 representing NM_001269041
 Red=Cloning site Green=Tags(s)

MAATEISVLSEQFTKIKELELMPEKGLKEEEKDGVCREKDHRSPSELEAERTSGAFQDSVLEEEVELVLA
 PSEESEKYILTLQTVHFTSEAVELQDMSLLSIQQQEGVQVVVQQPGPGLLWLEEGPRQSLQQCVAISIQQ
 ELYSPQEMEVLFQHALEENVMVASEDSKLAVSLAETTGLIKLEEEQEKNQLLAERTKEQLFFVETMSGDE
 RSDEIVLTVSNSNVEEQEDQPTAGQADAEKAKSTKNQRKTKGAKGTFHCDVCMFTSSRMSSFNRHMKTHT
 SEKPHLCHLCLKTFRTVTLRLNHVNTHTGTRPYKCNDCNMAFVTSGELVRHRRYKHTHEKPFKCSMCKYA
 SVEASKLKRHVRSHTGERPFQCCQCSYASRDYKLRHMRTHSGEKPYECHICHTRFTQSGTMKIHLQK
 HGENVPKYQCPHCATIIARKSDLRVHMRNLHAYSAAELKCRYCSAVFHERYALIQHQKTHKNEKRFKCKH
 CSYACKQERHMTAHIRTHTGEKPFCLSCNKCFRQKQLLNAHFRKYHDANFIPTVYKCSKCGKGFSRWIN
 LHRHSEKCGSGEAKSAASGKGRTRKRKQITLKEATKGQKEAAKGWKEAANGDEAAAAEEASTTKGEQFPG
 EMFPVACRETTARVKEEVDEGVTCEMLLNTMDK

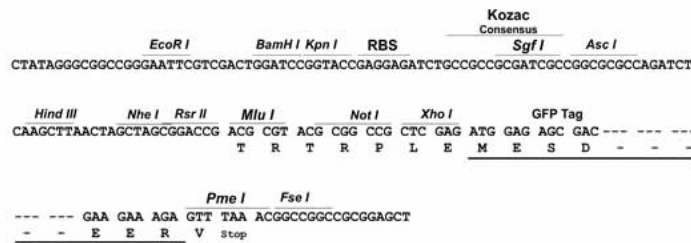
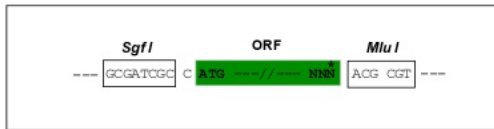
TRTRPLE - GFP Tag - V

Restriction Sites:

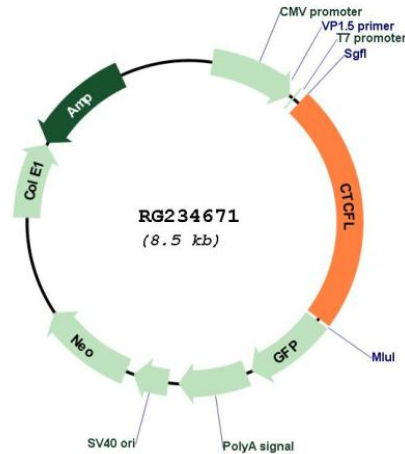
SgfI-MluI

Cloning Scheme:

Cloning sites used for ORF Shuttling:



Plasmid Map:



ACCN: NM_001269041

ORF Size: 1989 bp

OTI Disclaimer: The molecular sequence of this clone aligns with the gene accession number as a point of reference only. However, individual transcript sequences of the same gene can differ through naturally occurring variations (e.g. polymorphisms), each with its own valid existence. This clone is substantially in agreement with the reference, but a complete review of all prevailing variants is recommended prior to use. [More info](#)

OTI Annotation: This clone was engineered to express the complete ORF with an expression tag. Expression varies depending on the nature of the gene.

Components: The ORF clone is ion-exchange column purified and shipped in a 2D barcoded Matrix tube containing 10ug of transfection-ready, dried plasmid DNA (reconstitute with 100 ul of water).

Reconstitution Method:

1. Centrifuge at 5,000xg for 5min.
2. Carefully open the tube and add 100ul of sterile water to dissolve the DNA.
3. Close the tube and incubate for 10 minutes at room temperature.
4. Briefly vortex the tube and then do a quick spin (less than 5000xg) to concentrate the liquid at the bottom.
5. Store the suspended plasmid at -20°C. The DNA is stable for at least one year from date of shipping when stored at -20°C.

RefSeq: [NM_001269041.1](#), [NP_001255970.1](#)

RefSeq Size: 4073 bp

RefSeq ORF: 1992 bp

Locus ID: 140690

UniProt ID: [Q8NI51](#)

Cytogenetics: 20q13.31

Protein Families: Transcription Factors

Gene Summary: CCCTC-binding factor (CTCF), an 11-zinc-finger factor involved in gene regulation, utilizes different zinc fingers to bind varying DNA target sites. CTCF forms methylation-sensitive insulators that regulate X-chromosome inactivation. This gene is a paralog of CTCF and appears to be expressed primarily in the cytoplasm of spermatocytes, unlike CTCF which is expressed primarily in the nucleus of somatic cells. CTCF and the protein encoded by this gene are normally expressed in a mutually exclusive pattern that correlates with resetting of methylation marks during male germ cell differentiation. Multiple alternatively spliced transcript variants encoding different isoforms have been found for this gene. [provided by RefSeq, Jun 2012]