

## Product datasheet for **RG234515**

### **A1CF (NM\_001198820) Human Tagged ORF Clone**

#### **Product data:**

Product Type:	Expression Plasmids
Product Name:	A1CF (NM_001198820) Human Tagged ORF Clone
Tag:	TurboGFP
Symbol:	A1CF
Synonyms:	ACF; ACF64; ACF65; APOBEC1CF; ASP
Mammalian Cell Selection:	Neomycin
Vector:	pCMV6-AC-GFP (PS100010)
E. coli Selection:	Ampicillin (100 ug/mL)



[View online »](#)

**ORF Nucleotide Sequence:**

>RG234515 representing NM\_001198820  
 Red=Cloning site Blue=ORF Green=Tags(s)

TTTTGTAATACGACTCACTATAGGGCGGCCGGAATTCGTCGACTGGATCCGGTACCGAGGAGATCTGCC  
 GCCCGGATCGCC

ATGGAAGCAGTGTGTCTGGGCACATGCCAGAGCCAGAAGCGAGCATGAGCACAGCAATTCCTGGCCTCA  
 AAAAAGGAAATAATGCTTTGCAGTCCATCATTTTGCAAACCTTTGCTGGAAAAGGAAAATGGACAAAAGAAA  
 ATATGGTGGCCCTCCACCTGGTTGGGATGCTGCACCCCTGAAAGGGGCTGTGAAATTTTTATTGAAAA  
 CTTCCCGAGACCTTTTTGAGGATGAGCTTATACCATTATGTGAAAAATCGGTAAAATTTATGAAATGA  
 GAATGATGATGGATTTTAAATGGCAACAATAGAGGATATGCATTTGTAACATTTTCAAATAAAGTGGAAAGC  
 CAAGAATGCAATCAAGCAACTTAATAATTATGAAATTAGAAATGGGCGCCTCTTAGGGGTTTGTGCCAGT  
 GTGGACAACCTGCCGATTATTTGTTGGGGGCATCCAAAAACAAAAGAGAGAAGAAATCTTATCGGAGA  
 TAAAAAGGTTACTGAAGGTGTTGTCGATGTCATCGTCTACCAAGCGCTGCAGATAAAACAAAACCG  
 AGGCTTTGCCTTCTGGAGTATGAGAGTCATCGAGCAGCTGCCATGGCGAGGAGGAACTGCTACCAGGA  
 AGAATTCAGTTATGGGGACATGGTATTGCAGTAGACTGGGCAGAGCCAGAAGTAGAAGTTGATGAAGATA  
 CAATGTCTTCAGTAAAACTCTATATGTAGAAATCTTATGCTGTCTACCTCTGAAGAGATGATTAAAA  
 GGAATTCACAATATCAAACCAGGTGCTGTGGAGAGGGTGAAGAAAATTCGAGACTATGCTTTTGTGCAC  
 TTCAGTAACCGAGAAGATGCAGTTGAGGCTATGAAAGCTTTAAATGGCAAGGTGCTGGATGGTCCCCCA  
 TTGAAGTCACCCTAGCAAAACAGTGGACAAGGACAGTTATGTTAGGTATACCCGAGGCACAGGTGGAAG  
 GGGCACCATGCTGCAAGGAGAGTATACCTACTCTTTGGCCAAGTTTATGATCCCACCACAACCTACCT  
 GGAGCTCTGTCTTCTATGCCCCAGACCTATCGAGCAATCCCAGTCTTCATTTCCAGCCACCAAG  
 GACATCTCAGCAACAGAGCCATTATCCGAGCCCTTCTGTTAGAGGGGCTGCGGGATGAGAGGACTGGG  
 CGGCCGTGGCTATTTGGCATAACACAGGCCCTGGGTGAGGATACCGAGTCAAAGGAGACAAAAGAGAAGAC  
 AAATCTATGACATTTTACCTGGGATGGAGCTACCCCAATGAATCCTGTACATTTAAACCCCAAGGAA  
 TAAACTCGTCCCAGATATTAGAAGAGATTTGTGAGAAAAATAACTGGGGACAGCCAGTGTACCAGCT  
 GCACTCTGCTATTGGACAAGACCAAGACAGCTATTCTGTACAAAATAACTATTCCTGCTCTAGCCAGC  
 CAGAATCTGCAATCCACCCTTTCACACCTCAAAGCTGAGTGCCTTTGTGGATGAAGCAAAGACGTATG  
 CAGCCGAATACACCCTGCAGACCCTGGGCATCCCCTGATGGAGGCGATGGCACCATGGCTACTGCTGC  
 TGCTGCTGCTACTGCTTTCCAGGATATGCTGTCCCTAATGCAACTGCACCCGTGTCTGCAGCCAGCTC  
 AAGCAAGCGGTAACCCTGGACAAGACTTAGCAGCATATACAACCTATGAGGTCTACCAACTTTTGCAG  
 TACTGCCCGAGGGGATGGATATGGCACCTTC

ACGCGTACGCGGCCGCTCGAG – GFP Tag – GTTTAA

**Protein Sequence:**

>RG234515 representing NM\_001198820  
 Red=Cloning site Green=Tags(s)

MEAVCLGTCPEPEASMSTAIPGLKKGNNALQSIIQLLLEKENGQRKYGGPPPGWDAAPPERGCEIFIGK  
 LPRDLFEDEL IPLCEKIGKIYEMRMMDFNGNRRGYAFVTF SNKVEAKNAIKQLNNYEIRNGRLLGVCAS  
 VDNCRFLVGGIPKTKKREEILSEMCKVTEGVVDIVVYPSAADKTKNRGF AFVEYESHRAAMARRKLLPG  
 RIQLWGHGIAVDWAEPEVEVDEDTMSSVKILYVRNMLSTSEEMIEKEFNINIKPGAVERVKKIRDYAFVH  
 FSNREDAVEAMKALNGKVL DGSPIEVTLAKPVDKDSYVRYTRGTGGRGTM LQGEYTYSLGQVYDPTTYL  
 GAPVFYAPQTYAAIPSLHFPATKGHL SNRAIIRAPSVRGAAGVRGLGGRGYLAYTGLGRGYQVKGDKRED  
 KLYDILPGMELTPMNPVTLKQGIKLAPQILEEICQKNNWGPVYQLHSAIGDQRQLFLYKITIPALAS  
 QNPAPIHPFTPPKLSAFVDEAKTYAAEYTLQTLGIPTDGGDGMTAAAAATAFPGYAVPNATAPVSAQQL  
 KQAVTLGQDLAAYTTYEYPTFAVTARGDGYGTF

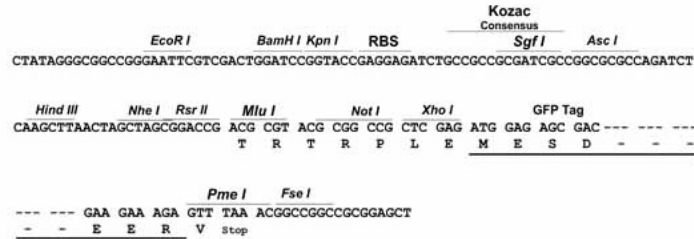
TRTRPLE – GFP Tag – V

**Restriction Sites:**

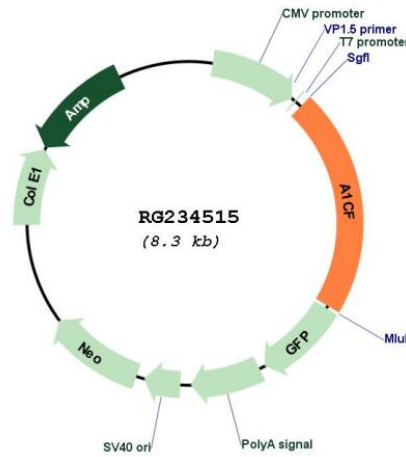
Sgfl-MluI

Cloning Scheme:

Cloning sites used for ORF Shutting:



Plasmid Map:



ACCN: NM\_001198820

ORF Size: 1782 bp

<b>OTI Disclaimer:</b>	The molecular sequence of this clone aligns with the gene accession number as a point of reference only. However, individual transcript sequences of the same gene can differ through naturally occurring variations (e.g. polymorphisms), each with its own valid existence. This clone is substantially in agreement with the reference, but a complete review of all prevailing variants is recommended prior to use. <a href="#">More info</a>
<b>OTI Annotation:</b>	This clone was engineered to express the complete ORF with an expression tag. Expression varies depending on the nature of the gene.
<b>Components:</b>	The ORF clone is ion-exchange column purified and shipped in a 2D barcoded Matrix tube containing 10ug of transfection-ready, dried plasmid DNA (reconstitute with 100 ul of water).
<b>Reconstitution Method:</b>	<ol style="list-style-type: none"><li>1. Centrifuge at 5,000xg for 5min.</li><li>2. Carefully open the tube and add 100ul of sterile water to dissolve the DNA.</li><li>3. Close the tube and incubate for 10 minutes at room temperature.</li><li>4. Briefly vortex the tube and then do a quick spin (less than 5000xg) to concentrate the liquid at the bottom.</li><li>5. Store the suspended plasmid at -20°C. The DNA is stable for at least one year from date of shipping when stored at -20°C.</li></ol>
<b>RefSeq:</b>	<a href="#">NM_001198820.1</a> , <a href="#">NP_001185749.1</a>
<b>RefSeq Size:</b>	9412 bp
<b>RefSeq ORF:</b>	1785 bp
<b>Locus ID:</b>	29974
<b>UniProt ID:</b>	<a href="#">Q9NQ94</a>
<b>Cytogenetics:</b>	10q11.23
<b>Gene Summary:</b>	Mammalian apolipoprotein B mRNA undergoes site-specific C to U deamination, which is mediated by a multi-component enzyme complex containing a minimal core composed of APOBEC-1 and a complementation factor encoded by this gene. The gene product has three non-identical RNA recognition motifs and belongs to the hnRNP R family of RNA-binding proteins. It has been proposed that this complementation factor functions as an RNA-binding subunit and docks APOBEC-1 to deaminate the upstream cytidine. Studies suggest that the protein may also be involved in other RNA editing or RNA processing events. Several transcript variants encoding a few different isoforms have been found for this gene. [provided by RefSeq, Nov 2010]