

Product datasheet for **RG233741**

Dysbindin (DTNBP1) (NM_001271669) Human Tagged ORF Clone

Product data:

Product Type:	Expression Plasmids
Product Name:	Dysbindin (DTNBP1) (NM_001271669) Human Tagged ORF Clone
Tag:	TurboGFP
Symbol:	Dysbindin
Synonyms:	BLOC1S8; DBND; HPS7; My031; SDY
Mammalian Cell Selection:	Neomycin
Vector:	pCMV6-AC-GFP (PS100010)
E. coli Selection:	Ampicillin (100 ug/mL)
ORF Nucleotide Sequence:	>RG233741 representing NM_001271669 Red=Cloning site Blue=ORF Green=Tags(s)

TTTTGTAATACGACTCACTATAGGGCGGCCGGAATTCGTCGACTGGATCCGGTACCGAGGAGATCTGCC
GCC**CGATCGCC**

ATGCTGGAGACCCTTCGCGAGCGGCTGCTGAGCGTGCAGCAGGATTTACCTCCGGGTATGAGGATACAT
GGGCTGCACTTCACAGAAGAGCCAAAGACTGTGCAAGTGTGGAGAGCTGGTGGATAGCGAGGTGGTCAT
GCTTTCTGCGCACTGGGAGAAGAAAAGACAAGCCTCGTGGAGCTGCAAGAGCAGCTCCAGCAGCTCCCA
GCTTTAATCGCAGACTTAGAATCCATGACAGCAAATCTGACTCATTTAGAGGCGAGTTTTGAGGAGGTAG
AGAACAACCTGCTGCATCTGGAAGACTTATGTGGCAGTGTGAATTAGAAAGATGCAAACATATGCAGTC
CCAGCAACTGGAGAATTACAAGAAAATAAGAGGAAGGAACCTTAAACCTTCAAAGCTGAACTAGATGCA
GAGCACGCCAGAAAGTCTGGAATGGAGCACACCCAGCAAATGAAGCTGAAGGAGCGGCAGAAGTTTT
TTGAGGAAGCCTTCCAGCAGGACATGGAGCAGTACCTGTCCACTGGCTACCTGCAGATTGCAGAGCGGCG
AGAGCCCATAGGCAGCATGTCAATGGAAGTGAACGTGGACATGCTGGAGCAGATGGACCTGATGGAC
ATATCGGACCAGGAGGCCCTGGACGTCTTCTGAACTCTGGAGGAGAAGAGAACACTGTGCTGTCCCCCG
CCTTAGGGCCTGAATCCAGTACCTGTGAGAATGAGATTACCCTCCAGGTTCCAAATCCCTCAGAATTAAG
AGCCAAGCCACCTTCTTCTTCCACCTGCACCGACTCGGCCACCCGGGACATCAGTGAGGGTGGGGAG
TCCCCGTTGTTTCAGTCCGATGAGGAGGAAGTTCAGGTGGACACTGCCCTGGCCACATCACACACTGACA
GAGAGGCCACTCCGGATGGTGGTGGAGCAGCGACTCT

ACGCGTACGCGGCCGCTCGAG - GFP Tag - GTTTAA



[View online »](#)

Protein Sequence: >RG233741 representing NM_001271669
 Red=Cloning site Green=Tags(s)

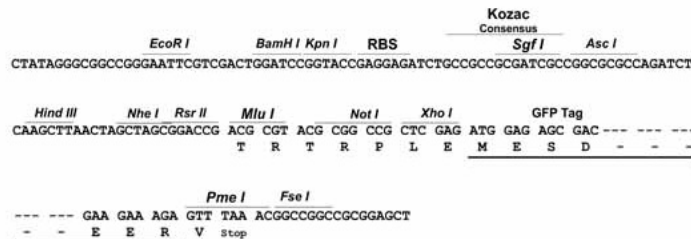
MLETLRERLLSVQQDFTSGYEDTWAALHRRAKDCASAGELVDSEVVMLSAHWKKKKTSLEVELQEQLQLP
 ALIADLESMTANLTHLEASFEEVENLLHLEDLCGQCELERCKHMQSQQLENYKKNRKELETFFKAELDA
 EHAQKVLMEHTQMKLKERQKFFEEAFQQDMEQYLSTGYLQIAERREPIGSMSSMEVNDMLEQMDLMD
 ISDQEALDVFLNSGGEENTVLSPALGPESSTCQNEITLQVNPSELRAKPPSSSSTCTDSATRDISEGGE
 SPVVQSDEEEVQVDTALATSHTDREATPDGGEDSDS

TRTRPLE - GFP Tag - V

Restriction Sites: SgfI-MluI

Cloning Scheme:

Cloning sites used for ORF Shuttling:



ACCN: NM_001271669

ORF Size: 948 bp

OTI Disclaimer: The molecular sequence of this clone aligns with the gene accession number as a point of reference only. However, individual transcript sequences of the same gene can differ through naturally occurring variations (e.g. polymorphisms), each with its own valid existence. This clone is substantially in agreement with the reference, but a complete review of all prevailing variants is recommended prior to use. [More info](#)

OTI Annotation: This clone was engineered to express the complete ORF with an expression tag. Expression varies depending on the nature of the gene.

Components: The ORF clone is ion-exchange column purified and shipped in a 2D barcoded Matrix tube containing 10ug of transfection-ready, dried plasmid DNA (reconstitute with 100 ul of water).

Reconstitution Method:

1. Centrifuge at 5,000xg for 5min.
2. Carefully open the tube and add 100ul of sterile water to dissolve the DNA.
3. Close the tube and incubate for 10 minutes at room temperature.
4. Briefly vortex the tube and then do a quick spin (less than 5000xg) to concentrate the liquid at the bottom.
5. Store the suspended plasmid at -20°C. The DNA is stable for at least one year from date of shipping when stored at -20°C.

RefSeq: [NM_001271669.1](#), [NP_001258598.1](#)

RefSeq Size: 1319 bp

RefSeq ORF: 951 bp

Locus ID: 84062

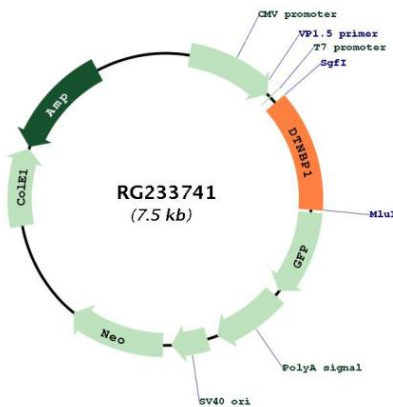
UniProt ID: [Q96EV8](#)

Cytogenetics: 6p22.3

Protein Families: Druggable Genome

Gene Summary: This gene encodes a protein that may play a role in organelle biogenesis associated with melanosomes, platelet dense granules, and lysosomes. A similar protein in mouse is a component of a protein complex termed biogenesis of lysosome-related organelles complex 1 (BLOC-1), and binds to alpha- and beta-dystrobrevins, which are components of the dystrophin-associated protein complex (DPC). Mutations in this gene are associated with Hermansky-Pudlak syndrome type 7. This gene may also be associated with schizophrenia. Multiple transcript variants encoding distinct isoforms have been identified for this gene. [provided by RefSeq, Jul 2008]

Product images:



Circular map for RG233741