

Product datasheet for **RG233143**

TrkC (NTRK3) (NM_001243101) Human Tagged ORF Clone

Product data:

Product Type:	Expression Plasmids
Product Name:	TrkC (NTRK3) (NM_001243101) Human Tagged ORF Clone
Tag:	TurboGFP
Symbol:	NTRK3
Synonyms:	gp145(trkC); GP145-TrkC; TRKC
Mammalian Cell Selection:	Neomycin
Vector:	pCMV6-AC-GFP (PS100010)
E. coli Selection:	Ampicillin (100 ug/mL)



[View online »](#)

ORF Nucleotide Sequence:

>RG233143 representing NM_001243101
 Red=Cloning site Blue=ORF Green=Tags(s)

TTTTGTAATACGACTCACTATAGGGCGGCCGGGAATTCGTCGACTGGATCCGGTACCGAGGAGATCTGCC
 GCC**CGGATCGCC**

ATGGATGTCTCTCTTTGCCAGCCAAGTGTAGTTTCTGGCGGATTTTCTGCTGGGAAGCGTCTGGCTGG
 ACTATGTGGGCTCCGTGCTGGCTTGCCCTGCAAATTGTGTCTGCAGCAAGACTGAGATCAATTGCCGGCG
 GCCGGACGATGGGAACCTCTCCCCCTCCTGGAAGGGCAGGATTCAGGGAACAGCAATGGGAACGCCAGT
 ATCAACATCACGGACATCTCAAGGAATATCACTTCCATACACATAGAGAAGTGGCGCAGTCTTACACGC
 TCAACGCCGTGGACATGGAGCTTACACCGGACTTCAAAAGCTGACCATCAAGAAGTCAAGACTTCCGGAG
 CATTACAGCCAGAGCCTTTGCCAAGAACCCCATTTGCGTTATATAAACCTGTCAAGTAACCGGCTCACC
 AACTCTCGTGGCAGCTTCCAGACGCTGAGTCTTCGGGAATTGCAGTTGGAGCAGAAGTCTTTCAACT
 GCAGCTGTGACATCCGCTGGATGCAGCTCTGGCAGGAGCAGGGGAGGCCAAGCTCAACAGCCAGAAGCT
 CTACTGCATCAACGCTGATGGCTCCAGCTTCTCTCTTCGCGATGAACATCAGTCAGTGTGACCTTCT
 GAGATCAGCGTGAAGCCAGTCAACCTGACCGTACGAGAGGGTGACAATGCTGTTATCACTTGCAATGGCT
 CTGGATCACCCCTTCTGATGTGGACTGGATAGTCACTGGGCTGCAGTCCATCAACACTCACCAGACCAA
 TCTGAAGTGGACCAATGTTTCATGCCATCAACTTGACGCTGGTGAATGTGACGAGTGGAGCAATGGCTTC
 ACCCTGACGTGCATTGCAGAGAAGCTGGTGGGCATGAGCAATGCCAGTGTGGCCCTCACTGTCTACTATC
 CCCACGTGTGGTGGAGCTGGAGGAGCCTGAGCTGCGCCTGGAGCACTGCATCGAGTTTGTGGTGGCTGG
 CAACCCCAACCAACGCTGCACTGGCTGCACAATGGGCAGCCTCTGCGGGAGTCCAAGATCATCCATGTG
 GAATACTACCAAGAGGGAGAGATTTCCGAGGGCTGCCTGCTTCAACAAGCCCAACCAACAACAATG
 GCAACTATACCTCATTGCCAAAAACCCACTGGGCACAGCCAACCAAGCAATCAATGGCCACTTCTCTCA
 GGAGCCCTTCCAGTTGACGAAGTGAAGTCCACACCTCCTATCACTGTGACCCACAACCAAGGAAGAC
 ACTTTTGGGGTATCCATAGCAGTTGGACTTGTCTTTTGCCTGTGCTCTTGTGGTGTCTCTTCGTCA
 TGATCAACAAATATGGTCGACGGTCCAATTTGGAATGAAGGGTCCCGTGGCTGTCATCAGTGGTGGGA
 GGACTCAGCCAGCCCACTGCACCACATCAACCACGGCATCACCACGCCCTCGTCACTGGATGCCGGGCC
 GACTGTGGTCAATGGCATGACTCGCATCCCTGTCAATTGAGAACCCCAAGTACTTCCGTGAGGGACACA
 ACTGCCACAAGCCGGACACGATGTGCAGCACATTAAGAGGAGAGACATCGTGTGAAGCGAGAAGTGGG
 TGAGGGAGCCTTTGGAAAGTCTTCTGGCCGAGTGTACAACCTCAGCCCGACCAAGGACAAGATGCTT
 GTGGCTGTGAAGCCCTGAAGGATCCCACCTGGCTGCCCGAAGGATTTCCAGAGGGAGGCCGAGCTGC
 TCACCAACCTGCAGCATGAGCACATTGTCAAGTTCTATGGAGTGTGCGGGATGGGGACCCCTCATCAT
 GGTCTTTGAATACATGAAGCATGGAGACCTGAATAAGTTCCTCAGGGCCCATGGGCCAGATGCAATGATC
 CTTGTGGATGGACAGCCACGCCAGGCCAAGGGTGAAGTGGGGCTCTCCCAAATGCTCCACATTGCCAGTC
 AGATCGCCTCGGGTATGGTGTACCTGGCCTCCCAGCACTTTGTGCACCGAGACCTGGCCACCAGGAAGT
 CCTGGTTGGAGCGAATCTGCTAGTGAAGATTGGGGACTTCGGCATGTCCAGAGATGTCTACAGCACGGAT
 TATTACAGGGTGGGAGGACACCCATGCTCCCCATTCGCTGGATGCCCTCTGAAAGCATCATGTACCGGA
 AGTTCACTACAGAGAGTGTATGGAGCTTCGGGGTGTCTCTGGGAGATCTTACCTATGAAAGCA
 GCCATGGTTCCAACCTCAAAACACGGAGGTCATTGAGTGCATTACCAAGGTCGTGTTTTGGAGCGGCC
 CGAGTCTGCCCCAAAGAGGTGTACGATGTGATGCTGGGGTGTGGCAGAGGGAACCAAGCAGCGGTTGA
 ACATCAAGGAGATCTACAAAATCTCCATGCTTTGGGAAGGCCACCCCAATCTACCTGGACATTCTTGG
 C

ACGGTACGCGGCCGCTCGAG - GFP Tag - GTTAA

Protein Sequence: >RG233143 representing NM_001243101
Red=Cloning site Green=Tags(s)

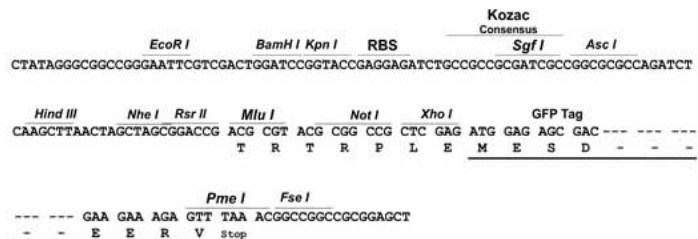
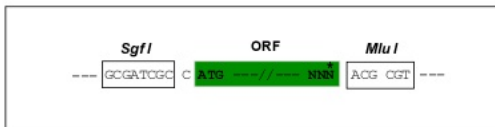
```
MDVSLCPAKCSFWRIFLLGSVWLDYVGSVLACPANCVCSKTEINCRPPDDGNLFPLLEGQDSGNSNGNAS  
INITDISRNITSIHIENWRSLHTLNAVDMELYTGLQKLTIKNSGLRSIQPRAFAKNPHLRINLSSNRLT  
TLQSWQLFQTLQSLRELQLEQNFNCSCDIRWMLWQEQGEAKLNSQNLKYNADGSQLPLFRMNISQCDLP  
EISVSHVNLTVREGDNAVITCNGSGSPLPDVDWIIVTGLQSIINTHTNLNWTNVHAINLTLVNVTSSENGF  
TLTICIAENVVGMNASVALTVYYPPRVVSLPEELRLEHCIEFVVRGNPPPTLHWHNGQPLRESKIIHV  
EYYQEGEISEGCLLFNKPTHYNNNGNYTLIAKNPLGTANQTINGHFLKEPFPVDEVSPPTITVTHKPEED  
TFGVSIAGLAFAFACVLLVVLVFMINKYGRRSKFGMKGPVAVISGEEDSASPLHHINHGITTSSLDAGP  
DTVVIGMTRIPVIENPQYFRQGHNCHKPDTYVQHIKRRDIVLKRELGEAFGKVFVLAECYNLSPTKDKML  
VAVKALKDPTLAARKDFQREALLTNLQHEHIVKFGVCGDGDPLIMVFEYMKHGDNLKFLRAHGPDAMI  
LVDGQPRQAKGELGLSQMLHIASQIASGMVYLASQHFVHRDLATRNLVGNLLVKIGDFGMSRDVYSTD  
YYRVGGHTMLPIRWMPPEESIMYRKFTTESDVWSFGVILWEIFTYKQPWFQLSNTEVIECITQGRVLERP  
RVCPKEVYDVMLGCWQREPQQRNLNIKEIYKILHALGKATPIYLDILG
```

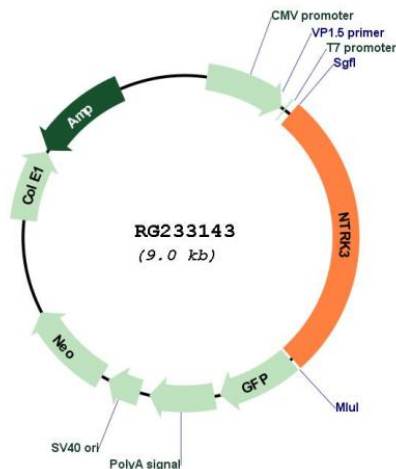
TRTRPLE - GFP Tag - V

Restriction Sites: Sgfl-MluI

Cloning Scheme:

Cloning sites used for ORF Shutting:



Plasmid Map:


ACCN: NM_001243101

ORF Size: 2451 bp

OTI Disclaimer: The molecular sequence of this clone aligns with the gene accession number as a point of reference only. However, individual transcript sequences of the same gene can differ through naturally occurring variations (e.g. polymorphisms), each with its own valid existence. This clone is substantially in agreement with the reference, but a complete review of all prevailing variants is recommended prior to use. [More info](#)

OTI Annotation: This clone was engineered to express the complete ORF with an expression tag. Expression varies depending on the nature of the gene.

Components: The ORF clone is ion-exchange column purified and shipped in a 2D barcoded Matrix tube containing 10ug of transfection-ready, dried plasmid DNA (reconstitute with 100 ul of water).

Reconstitution Method:

1. Centrifuge at 5,000xg for 5min.
2. Carefully open the tube and add 100ul of sterile water to dissolve the DNA.
3. Close the tube and incubate for 10 minutes at room temperature.
4. Briefly vortex the tube and then do a quick spin (less than 5000xg) to concentrate the liquid at the bottom.
5. Store the suspended plasmid at -20°C. The DNA is stable for at least one year from date of shipping when stored at -20°C.

RefSeq: [NM_001243101.1](#), [NP_001230030.1](#)

RefSeq Size: 2938 bp

RefSeq ORF: 2454 bp

Locus ID: 4916

Cytogenetics: 15q25.3

Protein Families: Druggable Genome, Protein Kinase, Transmembrane

Protein Pathways: Neurotrophin signaling pathway

Gene Summary: This gene encodes a member of the neurotrophic tyrosine receptor kinase (NTRK) family. This kinase is a membrane-bound receptor that, upon neurotrophin binding, phosphorylates itself and members of the MAPK pathway. Signalling through this kinase leads to cell differentiation and may play a role in the development of proprioceptive neurons that sense body position. Mutations in this gene have been associated with medulloblastomas, secretory breast carcinomas and other cancers. Several transcript variants encoding different isoforms have been found for this gene. [provided by RefSeq, Jul 2011]