

Product datasheet for **RG233104**

HLCS (NM_001242785) Human Tagged ORF Clone

Product data:

Product Type:	Expression Plasmids
Product Name:	HLCS (NM_001242785) Human Tagged ORF Clone
Tag:	TurboGFP
Symbol:	HLCS
Synonyms:	HCS
Mammalian Cell Selection:	Neomycin
Vector:	pCMV6-AC-GFP (PS100010)
E. coli Selection:	Ampicillin (100 ug/mL)



[View online »](#)

ORF Nucleotide Sequence:

>RG233104 representing NM_001242785
 Red=Cloning site Blue=ORF Green=Tags(s)

TTTTGTAATACGACTCACTATAGGGCGGCCGGAATTCGTCGACTGGATCCGGTACCGAGGAGATCTGCC
 GCC**CGGATCGCC**

ATGGAAGATAGACTCCACATGGATAATGGACTGGTACCCCAAAGATTGTGTCGGTGCCTTGCAGGACT
 CCACTCTGAAGGAAGTTAAGGATCAGGTCTCAAACAAGCAAGCCAGATCCTAGAGCCGAAGCCTGAACC
 TTCTCTTGAGATTAAGCCTGAGCAGGACGGTATGGAGCATGTTGGCAGAGATGACCCAAAGGCTCTTGTT
 GAAGAACCCAAACAAGGAGAGGAGCAGTGCCTCTGGGAGTGAGCCTGCTGGGGACAGTGACAGGGGAGGGG
 GCCCCGTGAGCATTACACCTCCATCTGTCTAGTTGCCACGAGTGTCTGGAACCTGAGAACAGCACCAT
 TGAGTCAGTCAAGTTTTCGTCTGCCGAGAACATCCAGACCTCCCTACGATTATAGCAGCAGTTTGGAG
 AGTGTGTGATGAGACCTCCCCGAAAGAGAAGGGAGGAGTCAACCTCACGGAAAGGCACCCAACA
 TCCTCCTCTATGTGGCTCCGACTCCAGGAAGCCCTCGGCCGGTCCACGAGGTCGGTCTGTGCTGGC
 CGACTGTGTGGACATTGACAGTTATATTCTCTACCACCTGCTGGAGGACAGTGTCTCAGAGACCCGTGG
 ACGGACAACCTGTCTGCTGTTGGTCAATTGCTACCAGGGAGTCCATCCCGAAGACCTGTACCAAGAAGTTCA
 TGGCCTATCTTTCTCAGGGAGGGAAAGGTGTTGGGCCTGTCTTCATCCTTACCTTTGGTGGCTTTCAGGT
 GACAAGCAAGGGTGCCTGCACAAGACAGTCCAGAACCTGGTTTTCTCCAAGGCTGACCAGAGCGAGGTG
 AAGCTCAGCGTCTTGAGCAGTGGCTGCAGGTACCAGGAAGGCCCGTCCGGCTCAGCCCCGGCAGGCTCC
 AGGGCCACCTGGAGAATGAGGACAAGGACAGGATGATTGTGCATGTGCCTTTTGGAACTCGCGGGGAGAG
 AGCTGTTCTTTGCCAGGTGCCTTAGAACTACCTCCAGCTCCAACATAGTGAACTCCAGAAGATTTT
 AACTTGCTCAAGTCAAGCAATTTTAGAAGATACGAAGTCCTTAGAGAGATTCTGACAACCTTGGCCTCA
 GCTGTGACATGAAACAAGTTCTGCCTTAACTCCTCTTTACTTGTGTCAGCTGCGGAGGAAATCGGGA
 TCCTCTTATGCAGTGGCTTGGGAAACATGTGGACTCCGAGGGAGAAATAAATCCGGCCAGCTCTCTCTT
 AGATTTGTTTCATCCTACGTGTCTGAAGTAGAAATAACCCCATCTTGTATACCTGTGGTACCAACATGG
 AGGCCTTCTCATCAGAACATTTCAACTTAGAGATCTATCGCCAAAATCTGCAGACCAAGCAGTTGGGGAA
 AGTAATTTTGTGGCCGAAGTGACCCCCACAACGATGCGTCTCCTGGATGGGCTGATGTTTCAGACACCG
 CAGGAAATGGGCTTAATAGTGATCGCGGCCGGCAGACCGAGGGCAAAGGACGGGAGGGGAATGTGTGGC
 TGAGCCCTGTGGGATGTGCTCTTCTACTCTGCTCATCTCCATTCCACTGAGATCCAGCTGGGACAGAG
 GATCCCGTTTGTCCAGCATCTGATGTCCGTGGCTGTCTGGAAGCAGTGAGGTCCATTCCCGAGTATCAG
 GATATCAACTTACGAGTGAAGTGGCCCAACGATATTTATTACAGTGACCTCATGAAGATCGGCGGAGTTC
 TGGTTAACTCAACTCATGGGAGAAACATTTTATATACTTATTGGCTGTGGATTTAATGTGACTAACAG
 TAACCCTACCATCTGCATCAACGACCTCATCACAGAATAACAATAACAACAAGGCAGAAGTGAAGCCC
 TTAAGAGCCGATTATCTCATCGCCAGAGTCGTGACTGTGCTGGAGAACTGATCAAAGAGTTTCAGGACA
 AAGGGCCCAACAGCGTCTTCCCCTTTATTACCGATACTGGGTCCACAGTGGTCAGCAAGTCCATCTGGG
 CAGCGCAGAGGGACCAAGGTGTCCATCGTTGGCCTGGACGATTCTGGCTTCTCCAGGTTACACCAGGAG
 GGCGGCGAGGTTGTGACTGTGCACCCGGACGGCAACTCCTTCGACATGCTGAGAACTCATCTCCCCCA
 AACGGCGG

ACGCGTACGCGGCCGCTCGAG - GFP Tag - GTTTAA

Protein Sequence: >RG233104 representing NM_001242785
 Red=Cloning site Green=Tags(s)

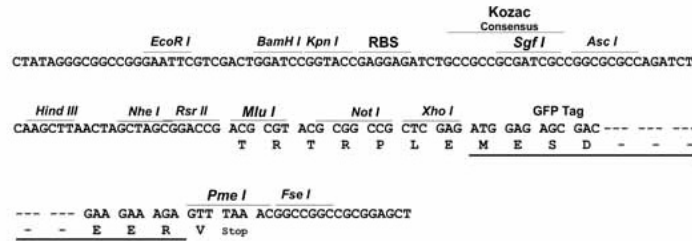
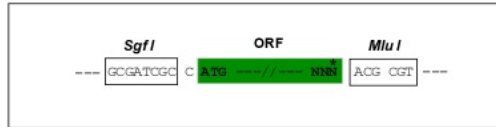
MEDRLHMDNGLVPQKIVSVHLQDSTLKEVKDQVSNKQAQILEPKPEPSLEIKPEQDGMHEVGRDDPKALG
 EEPKQRRGSASGSEPAGDSDRGGPVEHYHLHLSSCHECLELENSTIESVKFASAENIPDLPYDYSSSLE
 SVADETSPEREGRRVNLTGKAPNILLVYGSQSQALGRFHEVRSVLADCVIDSYILYHLLSDALSALRDPW
 TDNCLLLVIATRESIPEDLYQKFMAYLSQGGKVLGLSSSFTFGGFQVTSKALHKTQNLVFSKADQSEV
 KLSVLSSGCRYQEGPVRLSPGRLLQGHLENDKDRMIVHVVPFGTRGGEAVLCQVHLELPPSSNIVQTPEDF
 NLLKSSNFRRYEVLEILTTLGLSCDMKQVPALTPLYLLSAAEEIRDPLMQWLGKHVDSEGEIKSGQLSL
 RYVSSYVSEVEITPSCIPVVTNMEAFSSEHFNLEIYRQNLQTKLQKGVILFAEVTPTMRLLDGLMFQTP
 QEMGLIVIAARQTEGKGRGGNVWVSPVGCALSTLLISIPQRSQALGQRIPFVQHLMSVAVVEAVRSIPEYQ
 DINLRVKWPNDIYSDLMKIGGVLVNSTLMGETFYILIGCGFNVTNSNPTICINDLITEYNKQHKAEKLP
 LRADYL IARVVTVLEKLIKEFQDKGPNVLPYRYWVHSGQQVHLGSAEGPKVSIIVGLDDSGFLQVHQE
 GGEVVTVHPDGNISFDMLRNLILPKRR

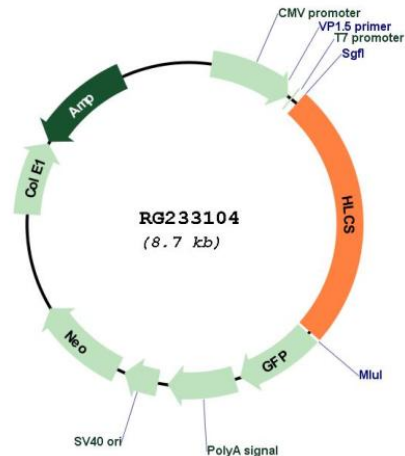
TRTRPLE - GFP Tag - V

Restriction Sites: SgfI-MluI

Cloning Scheme:

Cloning sites used for ORF Shuttling:



Plasmid Map:


ACCN: NM_001242785

ORF Size: 2178 bp

OTI Disclaimer: The molecular sequence of this clone aligns with the gene accession number as a point of reference only. However, individual transcript sequences of the same gene can differ through naturally occurring variations (e.g. polymorphisms), each with its own valid existence. This clone is substantially in agreement with the reference, but a complete review of all prevailing variants is recommended prior to use. [More info](#)

OTI Annotation: This clone was engineered to express the complete ORF with an expression tag. Expression varies depending on the nature of the gene.

Components: The ORF clone is ion-exchange column purified and shipped in a 2D barcoded Matrix tube containing 10ug of transfection-ready, dried plasmid DNA (reconstitute with 100 ul of water).

Reconstitution Method:

1. Centrifuge at 5,000xg for 5min.
2. Carefully open the tube and add 100ul of sterile water to dissolve the DNA.
3. Close the tube and incubate for 10 minutes at room temperature.
4. Briefly vortex the tube and then do a quick spin (less than 5000xg) to concentrate the liquid at the bottom.
5. Store the suspended plasmid at -20°C. The DNA is stable for at least one year from date of shipping when stored at -20°C.

RefSeq: [NM_001242785.2](#)

RefSeq Size: 6112 bp

RefSeq ORF: 2181 bp

Locus ID: 3141

UniProt ID: [P50747](#)

Cytogenetics: 21q22.13

Protein Pathways: Biotin metabolism, Metabolic pathways

Gene Summary: This gene encodes an enzyme that catalyzes the binding of biotin to carboxylases and histones. The protein plays an important role in gluconeogenesis, fatty acid synthesis and branched chain amino acid catabolism. Defects in this gene are the cause of holocarboxylase synthetase deficiency. Multiple alternatively spliced variants, encoding the same protein, have been identified.[provided by RefSeq, Jun 2011]