

Product datasheet for **RG233095**

PDE1C (NM_001191059) Human Tagged ORF Clone

Product data:

Product Type:	Expression Plasmids
Product Name:	PDE1C (NM_001191059) Human Tagged ORF Clone
Tag:	TurboGFP
Symbol:	PDE1C
Synonyms:	cam-PDE 1C; DFNA74; hCam-3; Hcam3
Mammalian Cell Selection:	Neomycin
Vector:	pCMV6-AC-GFP (PS100010)
E. coli Selection:	Ampicillin (100 ug/mL)



[View online »](#)

ORF Nucleotide
Sequence:

>RG233095 representing NM_001191059
Red=Cloning site Blue=ORF Green=Tags(s)

TTTTGTAATACGACTCACTATAGGGCGGCCGGAATTCGTCGACTGGATCCGGTACCGAGGAGATCTGCC
GCC**CGCATCGCC**

ATGGAGTCGCCAACCAAGGAGATTGAAGAATTTGAGAGCAACTCTCTGAAATACCTGCAACCGGAACAGA
TCGAGAAAATCTGGCTTCGGCTCCGCGGGCTGAGGAAATATAAGAAAACGTCCCAGAGATTACGGTCTTT
GGTCAAACAATTAGAGAGAGGGGAAGCTTCAGTGGTAGATCTTAAGAAAGATTTGGAATATGCAGCCACA
GTGCTTGAATCTGTGTATATTGATGAAACAAGGAGACTCCTGGATACAGAGGATGAGCTCAGTGACATTC
AGTCAGATGCTGTGCCTTCTGAGGTCCGAGACTGGCTGGCCTCCACCTTCACGCGGCAGATGGGGATGAT
GCTCAGGAGGAGCGACGAGAAGCCCGTTCAAGAGCATCGTTCACGCAGTGCAGGCTGGGATATTTGTG
GAGAGAATGTATAGACGGACATCAAACATGGTTGGACTGAGCTATCCACCAGCTGTTATTGAGGCATTAA
AGGATGTGGACAAGTGGTCTTTGACGCTTTTTCCCTCAATGAGGCCAGTGGGGATCATGCACTGAAATT
TATTTTCTATGAACTACTCACACGTTATGATCTGATCAGCCGTTTCAAGATCCCCATTTCTGCATTGTC
TCAATTTGTGGAGGCCCTGGAAGTGGGATACAGCAAGCACAAAAATCCTTACCATAACTTAATGCACGCTG
CCGATGTTACACAGACAGTGCATTACCTCCTCTATAAGACAGGAGTGGCGAACTGGCTGCAGGAGCTGGA
GATCTTTGCTATAATCTTCTCAGCTGCCATCCATGACTACGAGCATACCGGAACCAACAATTTCCAC
ATTCAGACTCGGTCTGATCCAGCTATTCTGTATAATGACAGATCTGTACTGGAGAATCACCATTTAAGTG
CAGCTTATCGCCTTCTGCAAGATGACGAGGAAATGAATATTTTGATTAACCTCTCAAAGGATGACTGGAG
GGAGTTTGAACCTTGGTAATTGAAATGGTGATGGCCACAGATATGTCTTGTCACTTCCAACAAATCAA
GCAATGAAGACTGCTCTGCAGCAGCCAGAAGCCATTGAAAAGCCAAAAGCCTTATCCCTTATGCTGCATA
CAGCAGATATTAGCCATCCAGCAAAAGCATGGGACCTCCATCATCGCTGGACAATGTCACCTCTGGAGGA
GTTCTTACAGACAGGGTGACAGAGAAGCAGAGCTGGGGCTGCCTTTTTCTCCTCTGTGTGACCGAAAGTCC
ACTATGGTTGCTCAGTCACAAGTAGGTTTCATTGATTTTCATCGTGAACCCACCTTCACTGTGCTTACGG
ACATGACCGAGAAGATTGTGAGTCCATTAATCGATGAAACCTCTCAAACCTGGTGGACAGGACAGAGGCG
TTCGAGTTTGAATAGCATCAGCTCGTCAGATGCCAAGCGATCAGGTGTCAAGACCTCTGGTTCAGAGGGA
AGTGCCCCGATCAACAATTTCTGTCATCTCCGTTGACTATAAGAGCTTTAAAGCTACTTGGACGGAAGTGG
TGCACATCAATCGGGAGAGATGGAGGGCAAGGTACCCAAAGAGGAGAAGGCCAAGAAGGAAGCAGAGGA
AAAGGCTCGCCTGGCCGAGAGGAGCAGCAAAAGGAAATGGAAGCCAAAAGCCAGGCTGAAGAAGGCGCA
TCTGGCAAAGCTGAGAAAAGACGTCTGGAGAACTAAGAATCAAGTCAATGGAACACGGGCAAACAAA
GTGACAACCCCTGTGGGAAAACTCCAAAGCCGAGAAGTCAATCAGGAGAACAGCAACAGAATGGTGA
CAAGATGGTAAAAATAAGACAGACAAGAAGGATCACTCTAACATCGGAAATGATTCAAAGAAAACAGAT
GGCAGAAAACAGCGTTCTCACGGCTCACAGCCCCAAGCACCAGCTCCACGTGTGCGCTTACGTTGCCAG
TCATCAAGCCTCCTTTGCGTCATTTAAACGCCCTGCTTACGCATCTAGCTCCTATGCACCTTCAGTCTC
AAAGAAAATGATGAGCATCCTGCAAGGTACAAGATGCTGGATCAGAGGATCAAATGAAAAAGATTTCAG
AACATCTCACATAACTGGAACAGAAAA

ACGCGTACGCGGCCGCTCGAG - GFP Tag - GTTTAA

Protein Sequence: >RG233095 representing NM_001191059
 Red=Cloning site Green=Tags(s)

MESPTKEIEEFESNSLKYLPQEIEKIWLRLRGLRKYKKTSQLRSLVKQLERGEASVVDLKKNLEYAAT
 VLESVYIDETRRLLDTEDELSDIQSDAVPSEVRDWLASTFTRQMGMLRRSDEKPRFKSIVHAVQAGIFV
 ERMYYRRTSNMVGLSYPPAVIEALKDVKWSFDVFSLNEASGDHALKFIYELLTRYDLISRFKIPISALV
 SFVEALEVGYSKHKNPYHNLMAADVTQTVHYLLYKTGVANWLTELEIFAIIFSAAIHDYEHTGTTNNFH
 IQTRSDPAILYNDRSVLENHHL SAAAYRLQDDEEMNILINLSKDDWREFRTLVIEMVMATDMSCHFQQIK
 AMKTALQQPEAIEKPKALSLMLHTADISHPAKAWDLHHRWTMSLLEEFFRQGDREAELGLPFSPLCDRKS
 TMVAQSQVGFIDFIVEPTFTVL TDMTEKIVSPLIDETSQTGGTGQRRSSLNSISSSDAKRSGVKTSGSEG
 SAPINNSVISVDYKSFKATWTEVVHINRERWRKVPKEEKAKKEAEEKARLAAEEQKEMEAKSQAEEGA
 SGKAEKKTSGETKNQVNGTRANKSDNPRGKNSKAEKSSGEQQQNGDFKDGKKNKTDKKDHSNIGNDSKKT
 GTKQRSHGSPAPSTSSTCRLTLPVIKPLRHFKRPAYASSYAPSVSKTDEHPARYKMLDQRIKMKKIQ
 NISHNWNRK

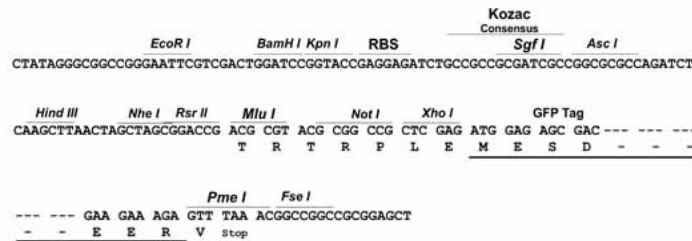
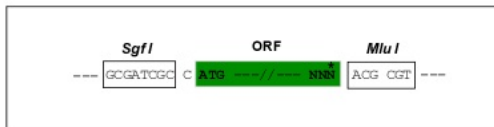
TRTRPLE - GFP Tag - V

Restriction Sites:

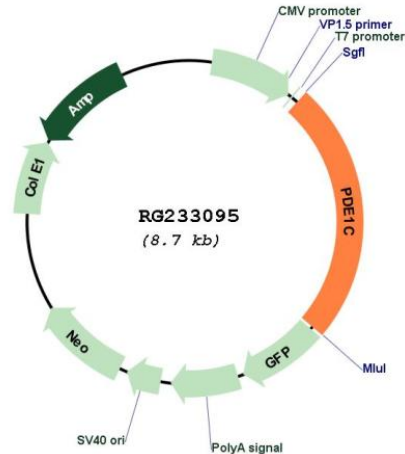
SgfI-MluI

Cloning Scheme:

Cloning sites used for ORF Shutting:



Plasmid Map:



ACCN: NM_001191059

ORF Size: 2127 bp

OTI Disclaimer: The molecular sequence of this clone aligns with the gene accession number as a point of reference only. However, individual transcript sequences of the same gene can differ through naturally occurring variations (e.g. polymorphisms), each with its own valid existence. This clone is substantially in agreement with the reference, but a complete review of all prevailing variants is recommended prior to use. [More info](#)

OTI Annotation: This clone was engineered to express the complete ORF with an expression tag. Expression varies depending on the nature of the gene.

Components: The ORF clone is ion-exchange column purified and shipped in a 2D barcoded Matrix tube containing 10ug of transfection-ready, dried plasmid DNA (reconstitute with 100 ul of water).

Reconstitution Method:

1. Centrifuge at 5,000xg for 5min.
2. Carefully open the tube and add 100ul of sterile water to dissolve the DNA.
3. Close the tube and incubate for 10 minutes at room temperature.
4. Briefly vortex the tube and then do a quick spin (less than 5000xg) to concentrate the liquid at the bottom.
5. Store the suspended plasmid at -20°C. The DNA is stable for at least one year from date of shipping when stored at -20°C.

RefSeq: [NM_001191059.3](#)

RefSeq Size: 2888 bp

RefSeq ORF: 2130 bp

Locus ID:	5137
UniProt ID:	Q14123
Cytogenetics:	7p14.3
Protein Families:	Druggable Genome
Protein Pathways:	Calcium signaling pathway, Olfactory transduction, Progesterone-mediated oocyte maturation, Purine metabolism
Gene Summary:	<p>This gene encodes an enzyme that belongs to the 3'5'-cyclic nucleotide phosphodiesterase family. Members of this family catalyze hydrolysis of the cyclic nucleotides, cyclic adenosine monophosphate and cyclic guanosine monophosphate, to the corresponding nucleoside 5'-monophosphates. The enzyme encoded by this gene regulates proliferation and migration of vascular smooth muscle cells, and neointimal hyperplasia. This enzyme also plays a role in pathological vascular remodeling by regulating the stability of growth factor receptors, such as PDGF-receptor-beta. [provided by RefSeq, Jul 2016]</p>