

Product datasheet for **RG233054**

Growth hormone receptor (GHR) (NM_001242399) Human Tagged ORF Clone

Product data:

Product Type:	Expression Plasmids
Product Name:	Growth hormone receptor (GHR) (NM_001242399) Human Tagged ORF Clone
Tag:	TurboGFP
Symbol:	GHR
Synonyms:	GHBP; GHIP
Mammalian Cell Selection:	Neomycin
Vector:	pCMV6-AC-GFP (PS100010)
E. coli Selection:	Ampicillin (100 ug/mL)



[View online »](#)

ORF Nucleotide Sequence:

>RG233054 representing NM_001242399
 Red=Cloning site Blue=ORF Green=Tags(s)

TTTTGTAATACGACTCACTATAGGGCGGCCGGAATTCGTCGACTGGATCCGGTACCGAGGAGATCTGCC
 GCC**CGGATCGCC**

ATGAAGTGGGTCTACAGGTATGGATCTCTGGCAGCTGCTGTTGACCTTGGCACTGGCAGGATCAAGTG
 ATGCTTTTTCTGGAAGTGAAGCCACAGCAGCTATCCTTAGCAGAGCACCTGGAGTCTGCAAAGTGTAA
 TCCAGGCCTAAAGACAAATCTCTAAGGAGCCTAAATCACCAAGTGCCGTTCCACTGAGCGAGAGACT
 TTTTCATGCCACTGGACAGATGAGGTTTCATCATGGTACAAAGAACCCTAGGACCCATACAGCTGTTCTATA
 CCAGAAGGAACACTCAAGAATGGACTCAAGAATGGAAAGAATGCCCTGATTATGTTTCTGCTGGGAAAA
 CAGCTGTACTTTAATTCATCGTTTACCTCCATCTGGATACCTTATTGTATCAAGCTAAGCAATGGT
 GGTACAGTGGATGAAAAGTGTCTCTGTTGATGAAATAGTGAACCAGATCCACCCATTGCCCTCACT
 GGACTTTACTGAACGTCAGTTAACTGGGATTCATGCAGATATCCAAGTGAAGTGGGAAGCACCACGCAA
 TGCAGATATTCAGAAAGGATGGATGGTTCTGGAGTATGAACTTCAATACAAAGAAGTAAATGAAACTAAA
 TGGAAAATGATGGACCCTATATTGACAACATCAGTTCAGTGTACTCATTGAAAAGTGATAAGGAATATG
 AAGTGCCTGTGAGATCCAAACAACGAAACTCTGGAAATATGGCGAGTTCAGTGAAGTGGCTCTATGTAAC
 ACTTCTCAGATGAGCCAATTTACATGTGAAGAAGATTTCTACTTTCCATGGCTCTTAATTTATCTTT
 GGAATATTTGGGCTAACAGTGTGCTATTTGTATTCTTATTTTCTAAACAGCAAAGGATTAATGCTGA
 TTCTGCCCCAGTTCAGTTCCAAAGATTAAGGAATCGATCCAGATCTCCTCAAGGAAGGAAAATTAGA
 GGAGGTGAACACAATCTTAGCCATTTCATGATAGCTATAAACCCGAATCCACAGTGTACTCTTGGGT
 GAATTTATTGAGTAGATATTGATGAGCCAGATGAAAAGACTGAGGAATCAGACACAGCAGACTTCTAA
 GCAGTGACCATGAGAAATCACATAGTAACCTAGGGGTGAAGGATGGCGACTCTGGAGTACCAGCTGTTG
 TGAACCTGACATTCTGGAGACTGATTTCAATGCCAATGACATACATGAGGGTACCTCAGAGGTTGCTCAG
 CCACAGAGGTTAAAAGGGGAAGCAGATCTTATGCCTTGACCAGAAGAATCAAAATAACTCACCTTATC
 ATGATGCTTGCCCTGCTACTCAGCAGCCAGTGTATCCAAGCAGAGAAAAACAAACCACAACCCTTCC
 TACTGAAGGAGCTGAGTCAACTACCAAGCTGCCCATATTCAGCTAAGCAATCCAAGTTCCTGTCAAAC
 ATCGACTTTTATGCCAGGTGAGCGACATTACACCAGCAGGTAGTGTGGTCTTTCCCGGGCCAAAAGA
 ATAAGGCAGGGATGTCCCAATGTGACATGCACCCGAAATGGTCTCACTTGCCAAGAAAATCTCCTTAT
 GGACAATGCCTACTTCTGTGAGGCAGATGCCAAAAGTGCATCCCTGTGGCTCCTCACATCAAGGTTGAA
 TCACACATACAGCAAGCTTAAACCAAGAGGACATTTACATCACACAGAAAGCCTTACCCTGCTGCTG
 GGAGGCCTGGGACAGGAGAACATGTTCCAGGTTCTGAGATGCCTGTCCAGACTATACCTCCATTATAT
 AGTACAGTCCCCACAGGGCCTCATACTCAATGCGACTGCCTTGCCCTTGCCCTGACAAAGAGTTTCTCTCA
 TCATGTGGCTATGTGAGCACAGACCAACTGAACAAAATCATGCCT

ACGCGTACGCGGCCGCTCGAG - GFP Tag - GTTTAA

Protein Sequence:

>RG233054 representing NM_001242399
 Red=Cloning site Green=Tags(s)

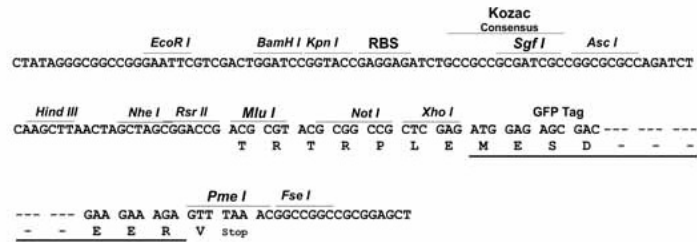
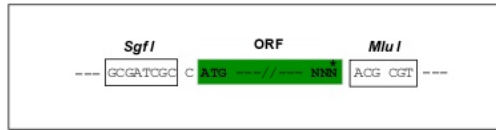
MNWGPTGMDLWQLLLTLALAGSSDAFSGSEATAAILSRAPWSLQSVNPLKTNSSKEPKFTKCRSPERET
 FSCHWTDEVHHGKTNLGPILFYTRRNTQEWTEWKECPDYVSAGENSCYFNSSFTSIWIPYCIKLTNSG
 GTVDEKCFVDEIVQDPPIALNWTLLNVSLTGIHADIQVRWEAPRNADIQKGMVLELQYKEVNETK
 WKMMDPILTTSVPVYSLKVDKEYEVRVRSKQRNSGNYGEFSEVLVYTLPQMSQFTCEEDFYFPWLLIIIF
 GIFGLTVMLFVFLFSKQQRKMLILPPVPVKIKGIDPDLLKEGKLEEVNTILAIHDSYKPEFHSDDSWV
 EFIELDIDEPDEKTEESDTRLLSSDHEKSHSNLGVKDGDSGRTSCCEPDILETDFNANDIHEGTSEVAQ
 PQRKGEADLLCLDQKNQNSPYHDACPATQQPSVIQAENKPKPLPTEGAESTHQAAHIQLSNPSSLSN
 IDFYAQVSDITPAGSVVLSPGQKNKAGMSQCDMHPMVSLCQENFLMDNAYFCEADAKKICPVAPHIKVE
 SHIQPSLNQEDIYITTESLTTAAGRPGTGEHVPVGPSEMPVPDYTSIHIVQSPQGLILNATALPLPKFEFLS
 SCGYVSTDQLNKIMP

TRTRPLE - GFP Tag - V

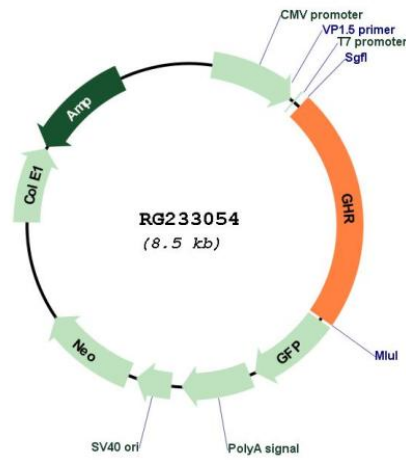
Restriction Sites: SgfI-MluI

Cloning Scheme:

Cloning sites used for ORF Shutting:



Plasmid Map:



ACCN: NM_001242399

ORF Size: 1935 bp

OTI Disclaimer:	The molecular sequence of this clone aligns with the gene accession number as a point of reference only. However, individual transcript sequences of the same gene can differ through naturally occurring variations (e.g. polymorphisms), each with its own valid existence. This clone is substantially in agreement with the reference, but a complete review of all prevailing variants is recommended prior to use. More info
OTI Annotation:	This clone was engineered to express the complete ORF with an expression tag. Expression varies depending on the nature of the gene.
Components:	The ORF clone is ion-exchange column purified and shipped in a 2D barcoded Matrix tube containing 10ug of transfection-ready, dried plasmid DNA (reconstitute with 100 ul of water).
Reconstitution Method:	<ol style="list-style-type: none"> 1. Centrifuge at 5,000xg for 5min. 2. Carefully open the tube and add 100ul of sterile water to dissolve the DNA. 3. Close the tube and incubate for 10 minutes at room temperature. 4. Briefly vortex the tube and then do a quick spin (less than 5000xg) to concentrate the liquid at the bottom. 5. Store the suspended plasmid at -20°C. The DNA is stable for at least one year from date of shipping when stored at -20°C.
RefSeq:	NM_001242399.2 , NP_001229328.1
RefSeq Size:	4529 bp
RefSeq ORF:	1938 bp
Locus ID:	2690
UniProt ID:	P10912
Cytogenetics:	5p13.1-p12
Protein Families:	Druggable Genome, Transmembrane
Protein Pathways:	Cytokine-cytokine receptor interaction, Jak-STAT signaling pathway, Neuroactive ligand-receptor interaction
Gene Summary:	This gene encodes a member of the type I cytokine receptor family, which is a transmembrane receptor for growth hormone. Binding of growth hormone to the receptor leads to receptor dimerization and the activation of an intra- and intercellular signal transduction pathway leading to growth. Mutations in this gene have been associated with Laron syndrome, also known as the growth hormone insensitivity syndrome (GHIS), a disorder characterized by short stature. In humans and rabbits, but not rodents, growth hormone binding protein (GHBP) is generated by proteolytic cleavage of the extracellular ligand-binding domain from the mature growth hormone receptor protein. Multiple alternatively spliced transcript variants have been found for this gene.[provided by RefSeq, Jun 2011]