

Product datasheet for **RG233023**

TCF4 (NM_001243231) Human Tagged ORF Clone

Product data:

Product Type:	Expression Plasmids
Product Name:	TCF4 (NM_001243231) Human Tagged ORF Clone
Tag:	TurboGFP
Symbol:	TCF4
Synonyms:	bHLHb19; CDG2T; E2-2; FECD3; ITF-2; ITF2; PTHS; SEF-2; SEF2; SEF2-1; SEF2-1A; SEF2-1B; SEF2-1D; TCF-4
Mammalian Cell Selection:	Neomycin
Vector:	pCMV6-AC-GFP (PS100010)
E. coli Selection:	Ampicillin (100 ug/mL)



[View online »](#)

ORF Nucleotide Sequence:

>RG233023 representing NM_001243231
 Red=Cloning site Blue=ORF Green=Tags(s)

TTTTGTAATACGACTCACTATAGGGCGGCCGGAATTCGTCGACTGGATCCGGTACCGAGGAGATCTGCC
 GCC**GCGATCGCC**

ATGGAAGAGGACAGCAGAGATGTAGAAGACAGAAGTAGCTCAGGGTCCTGGGGGAATGGAGGACATCCAA
 GCCCGTCCAGGAATATGGAGATGGGACTCCCTATGACCACATGACCAGCAGGGACTTGGGTACATGA
 CAATCTCTCTCCACCTTTTGTCAATTCCAGAATACAAAGTAAAACAGAAAGGGGCTCATACTCATCTTAT
 GGGAGAGAATCAAACCTTACAGGGTTGCCACCAGCAGAGTCTCCTTGGAGGTGACATGGATATGGGCAACC
 CAGGAACCTTTGCGCCACCAAACCTGGTCCAGTACTATCAGTATTCTAGCAATAATCCCGAAGGAG
 GCCTCTTACAGTAGTGCCATGGAGGTACAGACAAAGAAAGTTCGAAAAGTTCCTCCAGGTTTGCCATCT
 TCAGTCTATGCTCCATCAGCAAGCACTGCCGACTACAATAGGGACTCGCCAGGCTATCCTTCTCCAAAC
 CAGCAACCAGCACTTTCCCTAGCTCCTTCTTATGCAAGATGGCCATCACAGCAGTGACCCTTGGAGCTC
 CTCAGTGGGATGAATCAGCCTGGCTATGCAGGAATGTTGGGCAACTTCTCATATTCCACAGTCCAGC
 AGCTACTGTAGCCTGCATCCACATGAACGTTTGGAGTATCCATCACACTCCTCAGCAGACATCAATTCCA
 GTCTTCTCCGATGTCCACTTTCATCGTAGTGGTACAAACCATTACAGCACCTTCTCTGTACGCCTCC
 TGCCAACGGGACAGACAGTATAATGGCAAATAGAGGAAGCGGGCAGCCGGCAGCTCCAGACTGGAGAT
 GCTCTGGGAAAGCACTTGTCTCGATCTATTCTCCAGATCACACTAACACAGCTTTTATCAAACCTT
 CAACTCCTGTTGGCTCTCCTCCATCTCTCAGCAGGCACAGCTGTTGGTCTAGAAATGGAGGACAGGC
 CTCATCGTCTCCTAATTGAAGGACCTTACACTCTTTGCAAAGCCGAATTGAAGATCGTTTAGAAAGA
 CTGGATGATGCTATTCATGTTCTCCGGAACCATGCAGTGGGCCATCCACAGCTATGCCTGGTGGTCATG
 GGGACATGCATGGAATCATTGGACCTTCTCATAATGGAGCCATGGGTGGTCTGGGCTCAGGGTATGGAAC
 CGGCCTTCTTTCAGCCAACAGACATTCACTCATGGTGGGACCCATCGTGAAGATGGCGTGGCCCTGAGA
 GGCAGCCATTCTTCTGCCAAACCAGGTTCCGGTCCACAGTTCCTGTCCAGTCTGCGACTTCCCTG
 ACCTGAACCCACCCAGGACCCTTACAGAGGCATGCCACCAGGACTACAGGGCAGAGTGTCTCCTCTGG
 CAGCTCTGAGATCAAATCCGATGACGAGGGTATGAGAACCTGCAAGACACGAAATCTTCGGAGGACAAG
 AAATTAGATGACGACAAGAAGGATCAAAATCAATTACTAGCAATAATGACGATGAGGACCTGACACCAG
 AGCAGAAGGCAGAGCGTGAGAAGGAGCGGAGGATGGCCAACAATGCCGAGAGCGTCTGCGGGTCCGTGA
 CATCAACGAGGCTTTCAAAGAGCTCGGCCGATGGTGCAGCTCCACCTCAAGAGTGACAAGCCCCAGACC
 AAGCTCCTGATCCTCCACCAGGCGGTGGCCGTCATCCTCAGTCTGGAGCAGCAAGTCCGAGAAAGGAATC
 TGATCCGAAAGCTGCGTGTCTGAAAAGAAGGGAGGAAGAGAAGGTGTCCTCAGAGCCTCCCTCTCTC
 CTTGGCCGGCCACACCTGGAATGGGAGACGCATCGAATCACATGGGACAGATG

ACGCGTACGCGGCCGCTCGAG – GFP Tag – GTTTAA

Protein Sequence:

>RG233023 representing NM_001243231
 Red=Cloning site Green=Tags(s)

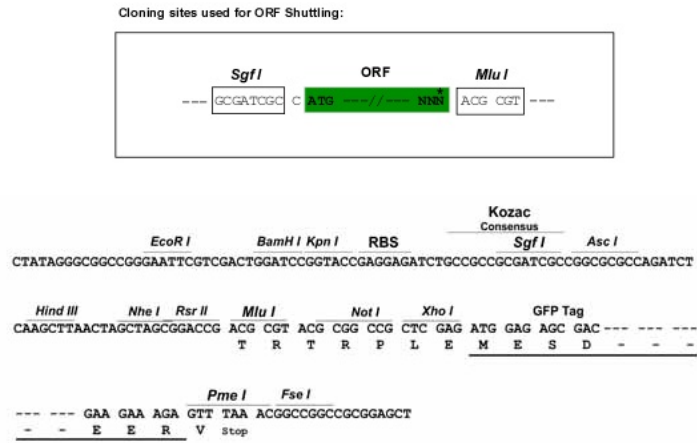
MEEDSRDVEDRSSSGSWGNGHPSRNYGDGTPYDHMTSRDLGSHDNLSPFFVNSRIQSKTERGSYSSY
 GRESNLQGCHQQLLGGDMDMGNPGTLPSTKPGSQYYQYSNNPRRRPLHSSAMEVQTKKVRKVPGLPS
 SVYAPSASTADYNRDPGYPSSKPATSTFPSSFFMQDGHHSDDPWSSSSGMNQPGYAGMLGNSSHIPQSS
 SYCSLHPHERLSYPSSHADINSSLPMPSTFHRSGTNHYSTSSCTPPANGTDSIMANRGSAGSSQTDG
 ALGKALASIYSPDHTNNSFSSNPSTPVGSPPSLSAGTAVWSRNGGQASSSPNYEGLHSLQSRIEDRLER
 LDDAIHVLRNHAVGPSTAMPGGHDMHGIIGPSHNGAMGGLGSGYGTGLLSANRHSMLVMGTHREDGVALR
 GSHSLLPNQVPVQLPVQSATSPDLNPPQDPYRGMPPGLQGQSVSSGSSEIKSDDEGDENLQDTKSSDK
 KLDDDKDKIKSITSNDDDELTPSEQAEREKERRMANNARERLRVRDINEAFKELGRMVQLHLKSDKPQT
 KLLILHQAVAVILSLEQQVRERLNPKAACLRREEEKVSSEPPPLSLAGPHPGMGDASNHMGMQ

TRTRPLE – GFP Tag – V

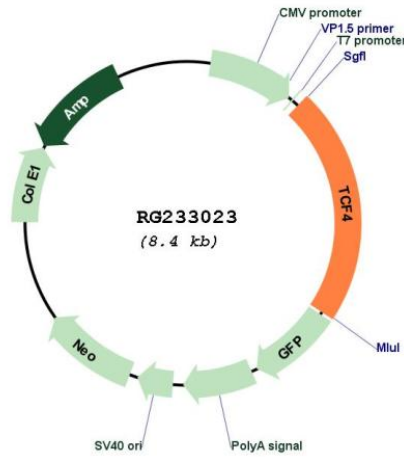
Restriction Sites:

SgfI-MluI

Cloning Scheme:



Plasmid Map:



ACCN: NM_001243231

ORF Size: 1875 bp

OTI Disclaimer:	The molecular sequence of this clone aligns with the gene accession number as a point of reference only. However, individual transcript sequences of the same gene can differ through naturally occurring variations (e.g. polymorphisms), each with its own valid existence. This clone is substantially in agreement with the reference, but a complete review of all prevailing variants is recommended prior to use. More info
OTI Annotation:	This clone was engineered to express the complete ORF with an expression tag. Expression varies depending on the nature of the gene.
Components:	The ORF clone is ion-exchange column purified and shipped in a 2D barcoded Matrix tube containing 10ug of transfection-ready, dried plasmid DNA (reconstitute with 100 ul of water).
Reconstitution Method:	<ol style="list-style-type: none">1. Centrifuge at 5,000xg for 5min.2. Carefully open the tube and add 100ul of sterile water to dissolve the DNA.3. Close the tube and incubate for 10 minutes at room temperature.4. Briefly vortex the tube and then do a quick spin (less than 5000xg) to concentrate the liquid at the bottom.5. Store the suspended plasmid at -20°C. The DNA is stable for at least one year from date of shipping when stored at -20°C.
RefSeq:	NM_001243231.2
RefSeq Size:	7754 bp
RefSeq ORF:	1878 bp
Locus ID:	6925
UniProt ID:	P15884
Cytogenetics:	18q21.2
Protein Families:	Druggable Genome, ES Cell Differentiation/IPS, Transcription Factors
Gene Summary:	This gene encodes transcription factor 4, a basic helix-loop-helix transcription factor. The encoded protein recognizes an Ephrussi-box ('E-box') binding site ('CANNTG') - a motif first identified in immunoglobulin enhancers. This gene is broadly expressed, and may play an important role in nervous system development. Defects in this gene are a cause of Pitt-Hopkins syndrome. In addition, an intronic CTG repeat normally numbering 10-37 repeat units can expand to >50 repeat units and cause Fuchs endothelial corneal dystrophy. Multiple alternatively spliced transcript variants that encode different proteins have been described. [provided by RefSeq, Jul 2016]