

## Product datasheet for **RG232913**

### CD73 (NT5E) (NM\_001204813) Human Tagged ORF Clone

#### Product data:

Product Type:	Expression Plasmids
Product Name:	CD73 (NT5E) (NM_001204813) Human Tagged ORF Clone
Tag:	TurboGFP
Symbol:	NT5E
Synonyms:	CALJA; CD73; E5NT; eN; eNT; NT; NT5; NTE
Mammalian Cell Selection:	Neomycin
Vector:	pCMV6-AC-GFP (PS100010)
E. coli Selection:	Ampicillin (100 ug/mL)



[View online »](#)

**ORF Nucleotide Sequence:**

>RG232913 representing NM\_001204813  
 Red=Cloning site Blue=ORF Green=Tags(s)

TTTTGTAATACGACTCACTATAGGGCGGCCGGAATTCGTCGACTGGATCCGGTACCGAGGAGATCTGCC  
 GCC**CGGATCGCC**

ATGTGTCCCCGAGCCGCGGGCGCCGCGACGCTACTCCTCGCCCTGGGCGCGGTGCTGTGGCCTGCGG  
 CTGGCGCCTGGGAGCTTACGATTTTGCACACCAACGACGTGCACAGCCGGCTGGAGCAGACCAGCGAGGA  
 CTCAGCAAGTGCCTCAACGCCAGCCGCTGCATGGGTGGCGTGGCTCGGCTCTTACCAAGTTACAGCAG  
 ATCCGCCGCGCCGAACCAACGTGCTGCTGCTGGACGCCGGCACCAGTACCAGGGCACTATCTGGTTCA  
 CCGTGTACAAGGGCGCCGAGGTGGCGCACTTTCATGAACGCCCTGCGCTACGATGCCATGGCACTGGGAAA  
 TCATGAATTTGATAATGGTGTGGAAGGACTGATCGAGCCACTCCTCAAAGAGGCCAAATTTCCAATTCTG  
 AGTGCAAACATTAAGCAAAGGGGCCACTAGCATCTCAAATATCAGGACTTTATTTGCCATATAAAGTTC  
 TTCTGTTGGTGTGAAGTTGTGGGAATCGTTGGATACACTTCCAAGAAAACCCCTTTCTCTCAAATCC  
 AGGGACAATTTAGTGTTGAAGATGAAATCACTGCATTACAACCTGAAGTAGATAAGTTAAAACTCTA  
 AATGTGAACAAAATTATTGCACTGGGACATTCCGGTTTTGAAATGGATAAACTCATCGCTCAGAAAGTGA  
 GGGGTGTGGACGTCGTGGTGGGAGGACACTCCAACACATTTCTTTACACAGGCAATCCACCTTCCAAGA  
 GGTGCCTGCTGGGAAGTACCCATTTCATAGTCACCTCTGATGATGGGCGGAAGTTCTGTAGTCCAGGCC  
 TATGCTTTTGGCAAAATACCTAGGCTATCTGAAGATCGAGTTTGTGAAAGAGGAAACGTCATCTCTTCCC  
 ATGGAAATCCCATTCTTCTAAACAGCAGCATTCTGAAGATCCAAGCATAAAAAGCAGACATTAACAAATG  
 GAGGATAAAATGGATAATTATTCTACCCAGGAATTAGGGAAAACAATTGTCTATCTGGATGGCTCCTCT  
 CAATCATGCCGCTTTAGAGAATGCAACATGGGCAACCTGATTTGTGATGCAATGATTAACAACAACCTGA  
 GACACCGGATGAAATGTTCTGGAACACGATCCATGTGCATTTAAATGGAGGTGGTATCCGGTCGCC  
 CATTGATGAACGCAACAATGGAATCCATGTGGTGTATGATCTTTCCCGAAAACCTGGAGACAGAGTAGTC  
 AAATTAGATGTTCTTTCACCAAGTGTGAGTGCACAGTTATGACCTCTCAAATGGACGAGGTATATA  
 AGGTGATCCTCCCAAATCTCTGGCCAATGGTGGAGATGGGTTCCAGATGATAAAAAGATGAATTATTAAG  
 ACATGACTCTGGTGACCAAGATATCAACGTGGTTTCTACATATATCTCCAAAATGAAAGTAAATTTATCCA  
 GCAGTTGAAGGTCGGATCAAGTTTTCCACAGGAAGTCACTGCCATGGAAGCTTTTCTTTAATATTTCTTT  
 CACTTTGGGCAGTGATCTTTGTTTTATACCAA

**ACGCGTACGCGGCCGCTCGAG** – GFP Tag – GTTTAA

**Protein Sequence:**

>RG232913 representing NM\_001204813  
 Red=Cloning site Green=Tags(s)

MCPRAARAPATLLLALGAVLWPAAGAWELTILHTNDVHSRLEQTSSESSKCVNASRCMGGVARLFTKVQQ  
 IRRRAEPNVLLLDAGDQYQGTIWFVYKGAEVAHFMNALRYDAMALGNHEFDNGVEGLIEPLLKEAKFPIL  
 SANIKAKGPLASQISGLYLPYKVLVPGDEVVIGVYTSKETPFLSNPGTNLVFEDEITALQPEVDKLLKTL  
 NVNKIIALGHSGFEMDKLIAQKVRGVDVVVGGHSNTFLYTGNNPSKEVPAGKYPPFIVTSDGRKVPVQQA  
 YAFGKYLGYLKIEFDERGNVSSHGNPILLNSSIPEDPSIKADINKWRIKLDNYSTQELGKTIVYLDGSS  
 QSCRFRECNMGNLICDAMINNNLRHTDEMFWNHVSMCILNGGGIRSPIDERNNGIHVVYDLSRKPGDRVV  
 KLDVLTCKRVPVSYDPLKMDDEVYKVIPLNPLANGGDGFQMIKDELLRHDSGDQDINNVSTYISKMKVIYP  
 AVEGRIFSTGSHCHGSFSLIFLSLWAVIFVLYQ

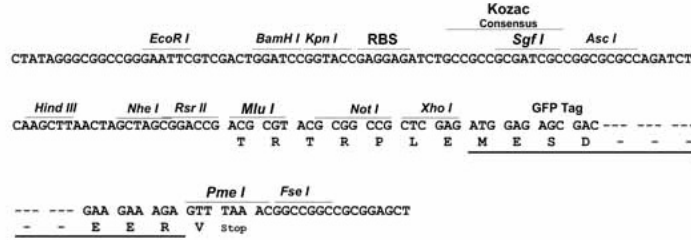
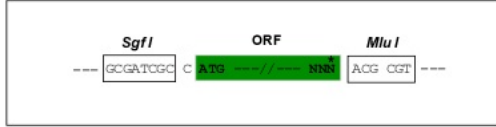
**TRTRPLE** – GFP Tag – V

**Restriction Sites:**

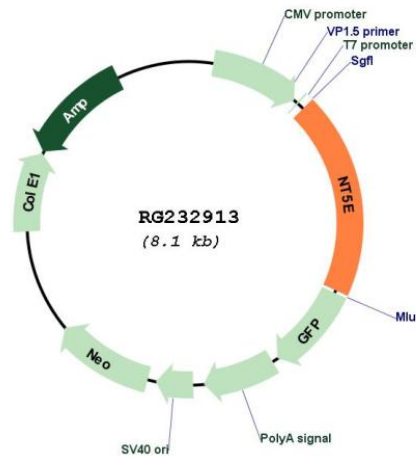
Sgfl-MluI

Cloning Scheme:

Cloning sites used for ORF Shutting:



Plasmid Map:



<b>ACCN:</b>	NM_001204813
<b>ORF Size:</b>	1572 bp
<b>OTI Disclaimer:</b>	The molecular sequence of this clone aligns with the gene accession number as a point of reference only. However, individual transcript sequences of the same gene can differ through naturally occurring variations (e.g. polymorphisms), each with its own valid existence. This clone is substantially in agreement with the reference, but a complete review of all prevailing variants is recommended prior to use. <a href="#">More info</a>
<b>OTI Annotation:</b>	This clone was engineered to express the complete ORF with an expression tag. Expression varies depending on the nature of the gene.
<b>Components:</b>	The ORF clone is ion-exchange column purified and shipped in a 2D barcoded Matrix tube containing 10ug of transfection-ready, dried plasmid DNA (reconstitute with 100 ul of water).
<b>Reconstitution Method:</b>	<ol style="list-style-type: none"><li>1. Centrifuge at 5,000xg for 5min.</li><li>2. Carefully open the tube and add 100ul of sterile water to dissolve the DNA.</li><li>3. Close the tube and incubate for 10 minutes at room temperature.</li><li>4. Briefly vortex the tube and then do a quick spin (less than 5000xg) to concentrate the liquid at the bottom.</li><li>5. Store the suspended plasmid at -20°C. The DNA is stable for at least one year from date of shipping when stored at -20°C.</li></ol>
<b>RefSeq:</b>	<a href="#">NM_001204813.1</a> , <a href="#">NP_001191742.1</a>
<b>RefSeq Size:</b>	3936 bp
<b>RefSeq ORF:</b>	1575 bp
<b>Locus ID:</b>	4907
<b>UniProt ID:</b>	<a href="#">P21589</a>
<b>Cytogenetics:</b>	6q14.3
<b>Protein Families:</b>	ES Cell Differentiation/IPS, Transmembrane
<b>Protein Pathways:</b>	Metabolic pathways, Nicotinate and nicotinamide metabolism, Purine metabolism, Pyrimidine metabolism
<b>Gene Summary:</b>	The protein encoded by this gene is a plasma membrane protein that catalyzes the conversion of extracellular nucleotides to membrane-permeable nucleosides. The encoded protein is used as a determinant of lymphocyte differentiation. Defects in this gene can lead to the calcification of joints and arteries. Two transcript variants encoding different isoforms have been found for this gene.[provided by RefSeq, Mar 2011]