

Product datasheet for **RG231504**

IL11 (NM_001267718) Human Tagged ORF Clone

Product data:

Product Type: Expression Plasmids
Product Name: IL11 (NM_001267718) Human Tagged ORF Clone
Tag: TurboGFP
Symbol: IL11
Synonyms: AGIF; IL-11
Mammalian Cell Selection: Neomycin
Vector: pCMV6-AC-GFP (PS100010)
E. coli Selection: Ampicillin (100 ug/mL)
ORF Nucleotide Sequence: >RG231504 representing NM_001267718
 Red=Cloning site Blue=ORF Green=Tags(s)

TTTTGTAATACGACTCACTATAGGGCGGCCGGAATTCGTCGACTGGATCCGGTACCGAGGAGATCTGCC
 GCC**CGATCGCC**

ATGAGTGCAGGGGCACTGGGAGCTCTACAGCTCCCAGGTGTGCTGACAAGGCTGCGAGCGGACCTACTGT
 CCTACCTGCGGCACGTGCAGTGGCTGCGCCGGGCAGGTGGCTCTCCCTGAAGACCCTGGAGCCCGAGCT
 GGGCACCTGCAGGCCGACTGGACCGGCTGCTGCGCCGGCTGCAGCTCCTGATGTCCCCTGGCCCTG
 CCCCAGCCACCCCGGACCCGCGGCCCGCCCGCTGGCGCCCCCTCCTCAGCCTGGGGGGGCATCAGGG
 CCGCCACGCCATCCTGGGGGGCTGCACCTGACACTTGACTGGCCGTGAGGGGACTGCTGCTGCTGAA
 GACTCGGCTG

ACGCGTACGCGGCCGCTCGAG - GFP Tag - GTTTAA

Protein Sequence: >RG231504 representing NM_001267718
 Red=Cloning site Green=Tags(s)
 MSAGALGALQLPGVLTRLRADLLSYLRHVQWLRAGGSSSLKLEPELGTLQARLDRLLRRLQLLMSRLAL
 PQPPDPAPPLAPPSSAWGGIRAAHAILGGLHLTLDWAVRGLLLKTRL

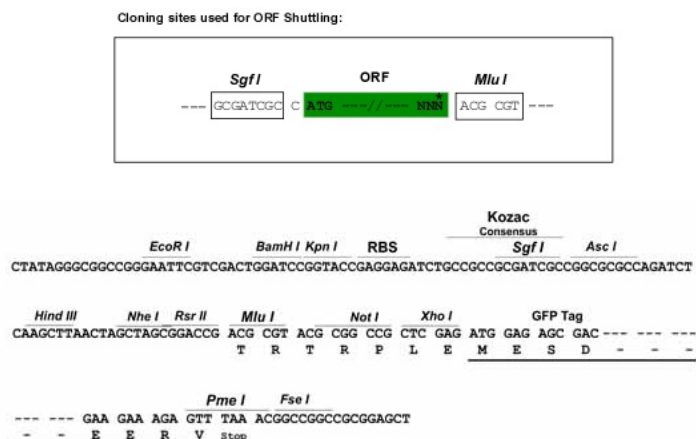
TRTRPLE - GFP Tag - V

Restriction Sites: SgfI-MluI

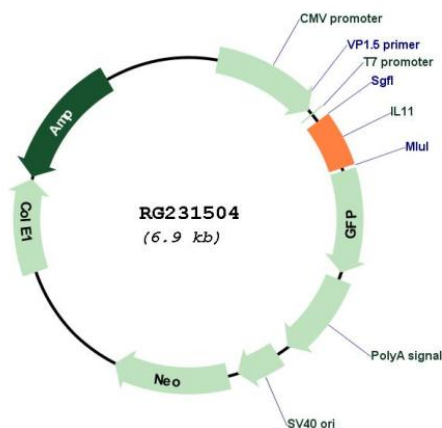


[View online »](#)

Cloning Scheme:



Plasmid Map:



ACCN: NM_001267718

ORF Size: 360 bp

OTI Disclaimer: The molecular sequence of this clone aligns with the gene accession number as a point of reference only. However, individual transcript sequences of the same gene can differ through naturally occurring variations (e.g. polymorphisms), each with its own valid existence. This clone is substantially in agreement with the reference, but a complete review of all prevailing variants is recommended prior to use. [More info](#)

OTI Annotation:	This clone was engineered to express the complete ORF with an expression tag. Expression varies depending on the nature of the gene.
Components:	The ORF clone is ion-exchange column purified and shipped in a 2D barcoded Matrix tube containing 10ug of transfection-ready, dried plasmid DNA (reconstitute with 100 ul of water).
Reconstitution Method:	<ol style="list-style-type: none">1. Centrifuge at 5,000xg for 5min.2. Carefully open the tube and add 100ul of sterile water to dissolve the DNA.3. Close the tube and incubate for 10 minutes at room temperature.4. Briefly vortex the tube and then do a quick spin (less than 5000xg) to concentrate the liquid at the bottom.5. Store the suspended plasmid at -20°C. The DNA is stable for at least one year from date of shipping when stored at -20°C.
RefSeq:	NM_001267718.2
RefSeq Size:	2208 bp
RefSeq ORF:	363 bp
Locus ID:	3589
UniProt ID:	P20809
Cytogenetics:	19q13.42
Protein Families:	Druggable Genome, Secreted Protein
Protein Pathways:	Cytokine-cytokine receptor interaction, Hematopoietic cell lineage, Jak-STAT signaling pathway
Gene Summary:	The protein encoded by this gene is a member of the gp130 family of cytokines. These cytokines drive the assembly of multisubunit receptor complexes, all of which contain at least one molecule of the transmembrane signaling receptor IL6ST (gp130). This cytokine is shown to stimulate the T-cell-dependent development of immunoglobulin-producing B cells. It is also found to support the proliferation of hematopoietic stem cells and megakaryocyte progenitor cells. Alternatively spliced transcript variants encoding distinct isoforms have been found for this gene. [provided by RefSeq, Jun 2012]