

## Product datasheet for **RG231386**

### **PDE1C (NM\_001191057) Human Tagged ORF Clone**

#### **Product data:**

Product Type:	Expression Plasmids
Product Name:	PDE1C (NM_001191057) Human Tagged ORF Clone
Tag:	TurboGFP
Symbol:	PDE1C
Synonyms:	cam-PDE 1C; DFNA74; hCam-3; Hcam3
Mammalian Cell Selection:	Neomycin
Vector:	pCMV6-AC-GFP (PS100010)
E. coli Selection:	Ampicillin (100 ug/mL)



[View online »](#)

ORF Nucleotide  
Sequence:

>RG231386 representing NM\_001191057  
Red=Cloning site Blue=ORF Green=Tags(s)

TTTTGTAATACGACTCACTATAGGGCGGCCGGAATTCGTCGACTGGATCCGGTACCGAGGAGATCTGCC  
GCC**CGCATCGCC**

ATGGAGTCGCCAACCAAGGAGATTGAAGAATTTGAGAGCAACTCTCTGAAATACCTGCAACCGGAACAGA  
TCGAGAAAATCTGGCTTCGGCTCCGCGGGCTGAGGAAATATAAGAAAACGTCCCAGAGATTACGGTCTTT  
GGTCAAACAATTAGAGAGAGGGGAAGCTTCAGTGGTAGATCTTAAGAAAGATTTGGAATATGCAGCCACA  
GTGCTTGAATCTGTGTATATTGATGAAACAAGGAGACTCCTGGATACAGAGGATGAGCTCAGTGACATTC  
AGTCAGATGCTGTGCCTTCTGAGGTCCGAGACTGGCTGGCCTCCACCTTCACGCGGCAGATGGGGATGAT  
GCTCAGGAGGAGCGACGAGAAGCCCGTTCAAGAGCATCGTTCACGCAGTGCAGGCTGGGATATTTGTG  
GAGAGAATGTATAGACGGACATCAAACATGGTTGGACTGAGCTATCCACCAGCTGTTATTGAGGCATTAA  
AGGATGTGGACAAGTGGTCTTTGACGCTTTTTCCCTCAATGAGGCCAGTGGGGATCATGCACTGAAATT  
TATTTTCTATGAACTACTCACACGTTATGATCTGATCAGCCGTTTCAAGATCCCCATTTCTGCATTGTC  
TCATTTGTGGAGGCCCTGGAAGTGGGATACAGCAAGCACAAAAATCCTTACCATAACTTAATGCACGCTG  
CCGATGTTACACAGACAGTGCATTACCTCCTCTATAAGACAGGAGTGGCGAACTGGCTGCAGGAGCTGGA  
GATCTTTGCTATAATCTTCTCAGCTGCCATCCATGACTACGAGCATACCGGAACCAACAATTTCCAC  
ATTCAGACTCGGTCTGATCCAGCTATTCTGTATAATGACAGATCTGTAAGTGGAGAATCACCATTTAAGTG  
CAGCTTATCGCCTTCTGCAAGATGACGAGGAAATGAATATTTTGATTAACCTCTCAAAGGATGACTGGAG  
GGAGTTTCAACCTTGGTAATTGAAATGGTGTGGCCACAGATATGTCTTGTCACTTCCAACAAATCAA  
GCAATGAAGACTGCTCTGCAGCAGCCAGAAGCCATTGAAAAGCCAAAAGCCTTATCCCTTATGCTGCATA  
CAGCAGATATTAGCCATCCAGCAAAAAGCATGGGACCTCCATCATCGCTGGACAATGTCACCTCTGGAGGA  
GTTCTTACAGACAGGGTGACAGAGAAGCAGAGCTGGGGCTGCCTTTTTCTCCTCTGTGTGACCGAAAAGTCC  
ACTATGGTTGCTCAGTCACAAGTAGGTTTCATTGATTTTCATCGTGAACCCACCTTCACTGTGCTTACGG  
ACATGACCGAGAAGATTGTGAGTCCATTAATCGATGAAACCTCTCAAACCTGGTGGACAGGACAGAGGCG  
TTCGAGTTTGAATAGCATCAGCTCGTCAGATGCCAAGCGATCAGGTGTCAAGACCTCTGGTTTCAAGGGA  
AGTGCCCCGATCAACAATTCTGTCATCTCCGTTGACTATAAGAGCTTTAAAGCTACTTGGACGGAAGTGG  
TGCACATCAATCGGGAGAGATGGAGGGCAAGGTACCCAAAGAGGAGAAGGCCAAGAAGGAAGCAGAGGA  
AAAGGCTCGCCTGGCCGAGAGGAGCAGCAAAAAGGAAATGGAAGCCAAAAGCCAGGCTGAAGAAGGCGCA  
TCTGGCAAAGCTGAGAAAAGACGCTCTGGAGAACTAAGAATCAAGTCAATGGAACACGGGCAAACAAA  
GTGACAACCCCTGTGGGAAAACTCCAAAGCCGAGAAGTCAATCAGGAGAACAGCAACAGAATGGTGA  
CAAGATGGTAAAAATAAGACAGACAAGAAGGATCACTCTAACATCGGAAATGATTCAAAGAAAACAGAT  
GGCAGAAAACAGCGTTCTCACGGCTCACAGCCCCAAGCACCAGCTCCACGTGTGCGCTTACGTTGCCAG  
TCATCAAGCCTCCTTTGCGTCATTTAAACGCCCTGCTTACGCATCTAGCTCCTATGCACCTTCACTC  
AAAGAAAATGATGAGCATCCTGCAAGGTACAAGATGCTGGATCAGAGGATCAAATGAAAAAGATTTCAG  
AACATCTCACATAACTGGAACAGAAAA

**ACGCGT**ACGCGGCCGCTCGAG - GFP Tag - GTTTAA

Protein Sequence: >RG231386 representing NM\_001191057  
 Red=Cloning site Green=Tags(s)

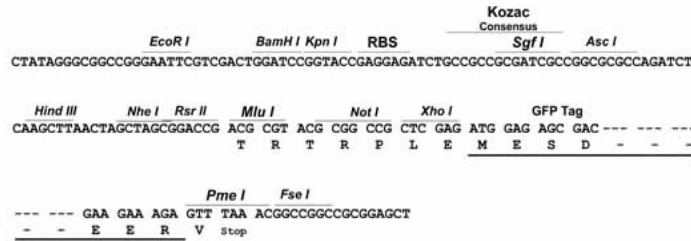
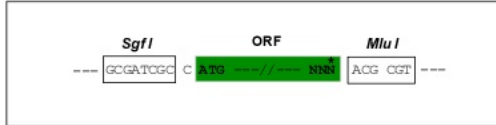
MESPTKEIEEFESNSLKYLPQEIEKIWLRLRGLRKYKKTSQLRSLVKQLERGEASVVDLKKNLEYAAT  
 VLESVYIDETRRLLDTEDELSDIQSDAVPSEVRDWLASTFTRQMGMLRRSDEKPRFKSIVHAVQAGIFV  
 ERMYYRRTSNMVGLSYPPAVIEALKDVKWSFDVFSLNEASGDHALKFIYELLTRYDLISRFKIPISALV  
 SFVEALEVGYSKHKNPYHNLMAADVTQTVHYLLYKTGVANWLTELEIFAIIFSAAIHDYEHTGTTNNFH  
 IQTRSDPAILYNDRSVLENHHL SAAAYRLQDDEEMNILINLSKDDWREFRTLVIEMVMATDMSCHFQQIK  
 AMKTALQQPEAIEKPKALSLMLHTADISHPAKAWDLHHRWTMSLLEEFFRQGDREAELGLPFSPLCDRKS  
 TMVAQSQVGFIDFIVEPTFTVL TDMTEKIVSPLIDETSQTGGTGQRRSSLNSISSSDAKRSGVKTSGSEG  
 SAPINNSVISVDYKSFKATWTEVVHINRERWRKVPKEEKAKKEAEEKARLAAEEQKEMEAKSQAEEGA  
 SGKAEKKTSGETKNQVNGTRANKSDNPRGKNSKAEKSSGEQQQNGDFKDGKKNKTDKKDHSNIGNDSKKT  
 GTKQRSHGSPAPSTSSTCRLTLPVIKPLRHFKRPAYASSYAPSVSKTDEHPARYKMLDQRIKMKKIQ  
 NISHNWNRK

TRTRPLE - GFP Tag - V

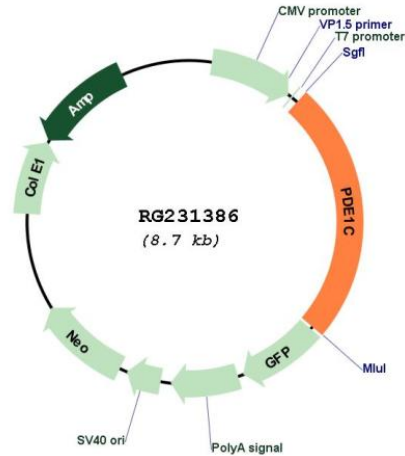
Restriction Sites: SgfI-MluI

Cloning Scheme:

Cloning sites used for ORF Shutting:



Plasmid Map:



ACCN: NM\_001191057

ORF Size: 2127 bp

OTI Disclaimer: The molecular sequence of this clone aligns with the gene accession number as a point of reference only. However, individual transcript sequences of the same gene can differ through naturally occurring variations (e.g. polymorphisms), each with its own valid existence. This clone is substantially in agreement with the reference, but a complete review of all prevailing variants is recommended prior to use. [More info](#)

OTI Annotation: This clone was engineered to express the complete ORF with an expression tag. Expression varies depending on the nature of the gene.

Components: The ORF clone is ion-exchange column purified and shipped in a 2D barcoded Matrix tube containing 10ug of transfection-ready, dried plasmid DNA (reconstitute with 100 ul of water).

Reconstitution Method:

1. Centrifuge at 5,000xg for 5min.
2. Carefully open the tube and add 100ul of sterile water to dissolve the DNA.
3. Close the tube and incubate for 10 minutes at room temperature.
4. Briefly vortex the tube and then do a quick spin (less than 5000xg) to concentrate the liquid at the bottom.
5. Store the suspended plasmid at -20°C. The DNA is stable for at least one year from date of shipping when stored at -20°C.

RefSeq: [NM\\_001191057.4](#)

RefSeq Size: 2957 bp

RefSeq ORF: 2130 bp

<b>Locus ID:</b>	5137
<b>UniProt ID:</b>	<a href="#">Q14123</a>
<b>Cytogenetics:</b>	7p14.3
<b>Protein Families:</b>	Druggable Genome
<b>Protein Pathways:</b>	Calcium signaling pathway, Olfactory transduction, Progesterone-mediated oocyte maturation, Purine metabolism
<b>Gene Summary:</b>	<p>This gene encodes an enzyme that belongs to the 3'5'-cyclic nucleotide phosphodiesterase family. Members of this family catalyze hydrolysis of the cyclic nucleotides, cyclic adenosine monophosphate and cyclic guanosine monophosphate, to the corresponding nucleoside 5'-monophosphates. The enzyme encoded by this gene regulates proliferation and migration of vascular smooth muscle cells, and neointimal hyperplasia. This enzyme also plays a role in pathological vascular remodeling by regulating the stability of growth factor receptors, such as PDGF-receptor-beta. [provided by RefSeq, Jul 2016]</p>