

Product datasheet for **RG230713**

Neogenin (NEO1) (NM_001172623) Human Tagged ORF Clone

Product data:

Product Type:	Expression Plasmids
Product Name:	Neogenin (NEO1) (NM_001172623) Human Tagged ORF Clone
Tag:	TurboGFP
Symbol:	NEO1
Synonyms:	IGDCC2; NGN; NTN1R2
Mammalian Cell Selection:	Neomycin
Vector:	pCMV6-AC-GFP (PS100010)
E. coli Selection:	Ampicillin (100 ug/mL)
ORF Nucleotide Sequence:	>RG230713 representing NM_001172623 Red=Cloning site Blue=ORF Green=Tags(s)

TTTTGTAATACGACTCACTATAGGGCGGCCGGAATTCGTCGACTGGATCCGGTACCGAGGAGATCTGCC
GCC**CGATCGCC**

ATGGCGGCGGAGCGGGAGCCCGGCGACTCCTCAGCACCCCTCCTTCTGGCTCTACTGCCTGCTGCTGC
TCGGGCGCGGGCGCGGGCGCCGCGGCCAGGAGCGGCTCCGCGCCGAGTCCCAGGAGCCAGCAT
TCGAACGTTCACTCCATTTTATTTCTGGTGGAGCCGGTGGATACACTCTCAGTTAGAGGCTCTTCTGTT
ATATTAACGTTTCAAGCATATTCTGAGCCTTCTCAAAAATTGAATGGAAAAAGATGGAACTTTTTTAA
ACTTAGTATCAGATGATCGACGCCAGCTTCTCCGGATGGATCTTTATTTATCAGCAATGTGGTGCATTC
CAAACACAATAAACCTGATGAAGTTATTATCAGTGTGTGGCCACTGTTGAGAGTCTTGGAACTATTATC
AGTAGAACAGCGAAGCTCATAGTAGCAGGTCTTCCAAGATTTACCAGCCAACCAGAACCTTCCCTCAGTTT
ATGCTGGGAACAATGCAATTCTGAATTGTGAAGTTAATGCAGATTTGGTCCCATTGTGAGGTGGGAACA
GAACAGACAACCCCTTCTTCTGGATGATAGAGTTATCAAACCTCCAAGTGAATGCTGGTTATCAGCAAT
GCAACTGAAGGAGATGGCGGGCTTTATCGCTGCGTAGTGGAAAGTGGTGGGCCACCAAAGTATAGTGATG
AAGTTGAATTGAAGTTCTTCCAGATCCTGAGGTGATATCAGACTTGGTATTTTTGAAACAGCCTTCTCC
CTTAGTCAGAGTCATTGGTCAGGATGTAGTGTGCCATGTGTTGCTTCCAGGACTTCTACTCCAACCATT
AAATGGATGAAAAATGAGGAGGCACTTGACACAGAAAGCTCTGAAAGATTGGTATTGCTGGCAGGTGGTA
GCCTGGAGATCAGTGATGTTACTGAGGATGATGCTGGGACTTATTTTTGTATAGCTGATAATGAAATGA
GACAATTGAAGCTCAAGCAGAGCTTACAGTGCAAGCTCAACCTGAATTCCTGAAGCAGCCTACTAATATA
TATGCTCACGAATCTATGGATATTGATTTGAATGTGAAGTACTGGAAAACCAACTCCAAGTGTGAAGT
GGGTCAAAAATGGGGATATGGTTATCCCAAGTATTATTTAAGATTGTAAGGAACATAATCTTCAAGT
TTTGGTCTGGTGAATCAGATGAAGGTTCTATCAGTGCATTGCTGAAAATGATGTTGAAATGCACAA
GCTGGAGCCCACTGATAATCCTTGAACATGCACCAGCCACAACGGGACCACTGCCTTCAGCTCCTCGGG
ATGTCGTGGCCTCCCTGGTCTCTACCCGCTTCATCAAATTGACGTGGCGGACACCTGCATCAGATCCTCA
CGGAGACAACCTTACCTACTCTGTGTTCTACCCAAGGAAGGATTGCTAGGGAACGTGTTGAGAATACC



[View online »](#)

AGTCACCCAGGAGAGATGCAAGTAACCATTCAAAACCTAATGCCAGCGACCGTGTACATCTTTAGAGTTA
TGGCTCAAAATAAGCATGGCTCAGGAGAGAGTTTCCAGCTCCACTGCGAGTAGAAACACAACCTGAGGTTCA
GCTCCCTGGCCAGCACCTAACCTTCGTGCATATGCAGCTTCGCCTACCTCCATCACTGTTACGTGGGAA
ACACCAGTGTCTGGCAATGGGGAAATTCAGAATTATAAATTGACTACATGGAAAAGGGGACTGATAAAG
AACAGGATGTTGATGTTTCAAGTCACTCTTACACCATTAATGGGTTGAAAAAATATACAGAGTATAGTTT
CCGAGTGGTGGCTACAATAAACATGGTCTGGAGTTCCACACCAGATGTTGCTGTTTCCGAACATTGTCA
GATGTTCCAGTGTCTCTCCAGAACTGTCTTGGAAAGTGGAAATTCAGAGATTATTGATTCACT
GGCAGCCACCTGCTCCAGCCACAAAAATGGGCAGATTACTGGCTACAAGATTTCGCTACCGAAAGGCCTC
CCGAAAGAGTGATGCTCACTGAGACCTTGGTAAGCGGGACACAGCTGTCTCAGCTGATTGAAGGCTTGTAT
CGGGGACTGAGTATAATTTCCGAGTGGCTGCTTAACAATCAATGGTACAGGCCCGGCAACTGACTGGC
TGTCTGCTGAAACTTTTGAAGTGACCTAGATGAAACTCGTGTTCTGAAGTGCCTAGCTCTTCCACGT
ACGCCCGCTCGTTACTAGCATCGTAGTGAGCTGGACTCCTCCAGAGAATCAGAACATTGTGGTCAGAGGT
TACGCCATTGGTTATGGCATTGGCAGCCCTCATGCCAGACCATCAAAGTGGACTATAAACAGCGCTATT
ACACCATTGAAAATCTGGATCCCAGCTCTCACTATGTGATTACCCTGAAAGCATTTAATAACGTGGGTGA
AGGCATCCCCCTGTATGAGAGTGTGTGACCAGGCCTCACACAGACACTTCTGAAGTTGATTTATTTGTT
ATTAATGTCCATACACTCCAGTCCAGATCCCCTCCATGATGCCACCAGTGGGAGTTTCAAGGCTTCCA
TTCTGAGTCATGACACCATCAGGATTACGTGGGCAGACAACCTCGCTGCCAAGCACCAGAAGATTACAGA
CTCCCCGACTACACCGTCCGATGGAAAACCAACATCCCAGCAAACACCAAGTACAAGAATGCAAAATGCA
ACCACTTTGAGTTATTTGGTGACTGGTTTAAAGCCGAATACACTCTATGAATTCTCTGTGATGGTGACCA
AAGGTCGAAGATCAAGTACATGGAGTATGACAGCCATGGGACCACCTTTGAATTAGTCCGACTTCTCC
ACCCAAGGATGTGACTGTTGTGAGTAAAGAGGGGAAACCTAAGACCATAATTGTGAATTGGCAGCCTCCC
TCCGAAGCCAATGGAAAATTACAGGTTACATCATATATTACAGTACAGATGTGAATGCAGAGATACATG
ACTGGGTTATTGAGCCTGTTGTGGAAACAGACTGACTCACCAGATACAAGAGTTAACTCTTGACACACC
ATACTACTTCAAAATCCAGGCACGGAACCTCAAAGGGCATGGGACCATGTCTGAAGCTGTCCAATTCAGA
ACACCTAAAGCGGACTCCTCTGATAAAAATGCCTAATGATCAAGCCTCAGGGTCTGGAGGGAAAGGAAGCC
GGCTGCCAGACCTAGGATCCGACTACAAACCTCCAATGAGCGGCAGTAACAGCCCTCATGGGAGCCCCAC
CTCTCCTCTGGACAGTAATATGCTGCTGGTCATAATTGTTTCTGTTGGCGTCATCACCATCGTGGTGGTT
GTGATTATCGCTGTCTTTGTACCCGTCGTACCACCTCTCACCAGAAAAAGAAACGAGCTGCCTGCAAAAT
CAGTGAATGGCTCTCATAAGTACAAAGGGAATTCCAAAGATGTGAAACCTCCAGATCTCTGGATCCATCA
TGAGAGACTGGAGCTGAAACCCATTGATAAGTCTCCAGACCCAAACCCCATCATGACTGATACTCCAATT
CCTCGCAACTCTCAAGATATCACACCAGTTGACAACCTCCATGGACAGCAATATCCATCAAAGGCGAAAT
CATACAGAGGGCATGAGTCAGAGGACAGCATGTCTACACTGGCTGGAAGGCGAGGAATGAGACCAAAAT
GATGATGCCCTTTGACTCCCAGCCACCCAGCAATCCGTTTCGAAATACCCCCAGCACTGACACCATGCCA
GCCTCTTCGTCTCAAACATGCTGCACTGATCACCAGGACCCTGAAGGTGCTACCAGCTCCTCTTACTTGG
CCAGCTCCAAGAGGAAGATTACGGCCAGAGTCTTCCACTGCCCATGTTTCGCCCTTCCCACCCATTGAA
GAGCTTCGCCGTGCCAGCAATCCCGCCTCCAGGACCTCCCACCTATGATCCTGCATTGCCAAGCACACCA
TTACTGTCCCAGCAAGCTCTGAACCATCACATTCAGTGAAGACAGCCTCCATCGGGACTCTAGGAA
GGAGCCGGCCTCCTATGCCAGTGGTTGTTCCCAGTGCCCTGAAGTGCAGGAGACCACAAGGATGTTGGA
AGACTCCGAGAGTAGCTATGAACCAGATGAGCTGACCAAAGAGATGGCCACCTGGAAGGACTAATGAAG
GACCTAAACGCTATCACAAACAGCA

ACGCGTACGCGGCCGCTCGAG – GFP Tag – GTTTAA

Protein Sequence: >RG230713 representing NM_001172623
 Red=Cloning site Green=Tags(s)

```

    MAAERGARRLLSTPSFWLYCLLLLGRRAPGAAAARSGSAPQSPGASIRTFPFYFLVEPVDLTVSRGSSV
    ILNCSAYSESPKIEWKKGDTFLNLVSDRRQLLPDGSFLISNVVHSHKHKPDEGYQCVAVESLGTII
    SRTAKLIVAGLPRFTSQPEPSSVYAGNNAILNCEVNADLVFVRWEQNRQPLLLDDRVIKLP SGLMVISN
    ATEGDGGLYRCVVEGGPPKYSDEVELKVLDPDEVIDSLVFLKQPSPLVRVIGQDVVLP CVASGLPTPTI
    KWMKNEEALDESSERLVLLAGGSLEISDVTEDDAGTYFCIADNGNETIEAQAELTVQAQPEFLKQPTNI
    YAHESMDIVFECEVTGKPTPTVKWVKNMGDMVIPSDYFKIVKEHNLQVLGLVKSDEGFYQCI AENDVNAQ
    AGAQLIILEHAPATTGPLPSAPRDVVASLVSTRFIKLTWRTPASDPHGDNLTVSVFYTKEGIARERVENT
    SHPGEMQVTIQNLMPATVYIFRVMAQNKHSGESSAPLRVETQPEVQLPGPAPNLRAYAASPTSITVTWE
    TPVSGNGEIQNYKLYMEKGTDKEDVDVSSHSYTINGLKKYTEYSFRVVAYNKHGPGVSTPDVAVRTLS
    DVPSAAPQNL SLEVRNSKSIMIHQPPAPATQNGQITGYKIRYRKASRKSVDVTETLVSGTQLSQLIEGLD
    RGTEYNFRVAALTINGTGPATDWLSAETFESDLDETRVPEVPSSLHVRPLVTSIVVSWTPPENQNI VVRG
    YAIGYGIGSPHAQTIKVDYKQRYTYIENLDPSSHYVITLKAFFNNVGEIPLYESA VTRPHTDTSEVDLFV
    INAPYTPVPDPTMMPVGVQASILSHDITRITWADNSLPKHQKITDSRYTTRVWKTNPANTKYKNANA
    TTL SYLVTGLKPNLTYEFVSMVTKGRSSSTWSMTAHGTTFFELVPTSPPKDVTVVSKGPKKTIIVNWQPP
    SEANGKITGYIIYYSTDVNAEIHWDVIEPVVGNRLTHQIQELTLDTPYYFKIQARNSKGMGMSEAVQFR
    TPKADSSDKMPNDQASGSGGKGSRLPDLGSDYKPPMSGNSPHGSPTSPLD SNMLLVIIIVSGVITIVVV
    VIIAVFCTRRTTSHQKKKRAACKSVNGSHKYKGNKSDVKPPDLWIHHERLELKPIDKSPDPNPIMTDTPI
    PRNSQDITPVDNSMDSNIHQRRNSYRGHESEDSMSTLAGRRGMRPKMMPFDSQPPQ QSVRNPSTDTMP
    ASSSQTCCTDHQDPEGATSSSYLASSQEEDSGQSLPTAHVVRPSHPLKSF AVPAIPPPGPPTYDPALPSTP
    LLSQQALNHHIHSVKTASIGTLGRSRPMPVVPVSAPEVQETTRMLEDSSESSYEPDELTKEMAHLEGLMK
    DLNAITTA
    
```

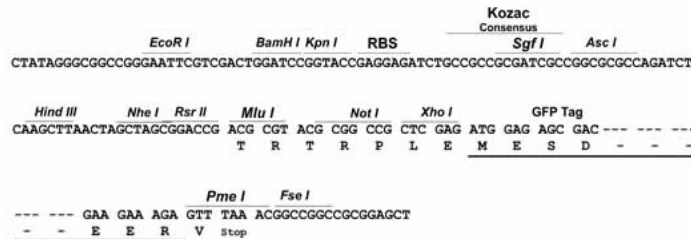
TRTRPLE - GFP Tag - V

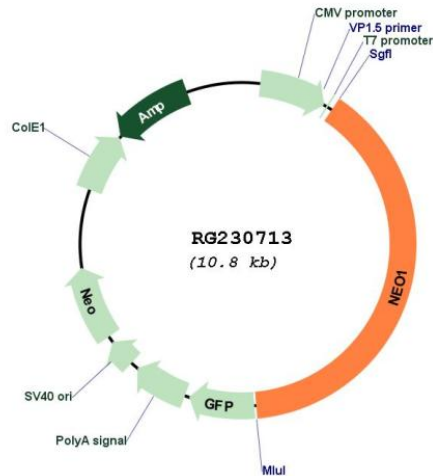
Restriction Sites:

SgfI-MluI

Cloning Scheme:

Cloning sites used for ORF Shutting:



Plasmid Map:


ACCN: NM_001172623

ORF Size: 4224 bp

OTI Disclaimer: The molecular sequence of this clone aligns with the gene accession number as a point of reference only. However, individual transcript sequences of the same gene can differ through naturally occurring variations (e.g. polymorphisms), each with its own valid existence. This clone is substantially in agreement with the reference, but a complete review of all prevailing variants is recommended prior to use. [More info](#)

OTI Annotation: This clone was engineered to express the complete ORF with an expression tag. Expression varies depending on the nature of the gene.

Components: The ORF clone is ion-exchange column purified and shipped in a 2D barcoded Matrix tube containing 10ug of transfection-ready, dried plasmid DNA (reconstitute with 100 ul of water).

Reconstitution Method:

1. Centrifuge at 5,000xg for 5min.
2. Carefully open the tube and add 100ul of sterile water to dissolve the DNA.
3. Close the tube and incubate for 10 minutes at room temperature.
4. Briefly vortex the tube and then do a quick spin (less than 5000xg) to concentrate the liquid at the bottom.
5. Store the suspended plasmid at -20°C. The DNA is stable for at least one year from date of shipping when stored at -20°C.

RefSeq: [NM_001172623.1](#), [NP_001166094.1](#)

RefSeq Size: 6929 bp

RefSeq ORF: 4227 bp

Locus ID: 4756

UniProt ID: [Q92859](#)

Cytogenetics: 15q24.1

Protein Families: Druggable Genome, Transmembrane

Protein Pathways: Cell adhesion molecules (CAMs)

Gene Summary: This gene encodes a cell surface protein that is a member of the immunoglobulin superfamily. The encoded protein consists of four N-terminal immunoglobulin-like domains, six fibronectin type III domains, a transmembrane domain and a C-terminal internal domain that shares homology with the tumor suppressor candidate gene DCC. This protein may be involved in cell growth and differentiation and in cell-cell adhesion. Defects in this gene are associated with cell proliferation in certain cancers. Alternate splicing results in multiple transcript variants. [provided by RefSeq, Feb 2010]