

Product datasheet for **RG230539**

Neuroigin 3 (NLGN3) (NM_181303) Human Tagged ORF Clone

Product data:

Product Type:	Expression Plasmids
Product Name:	Neuroigin 3 (NLGN3) (NM_181303) Human Tagged ORF Clone
Tag:	TurboGFP
Symbol:	Neuroigin 3
Synonyms:	HNL3
Mammalian Cell Selection:	Neomycin
Vector:	pCMV6-AC-GFP (PS100010)
E. coli Selection:	Ampicillin (100 ug/mL)



[View online »](#)

ORF Nucleotide Sequence:

>RG230539 representing NM_181303
 Red=Cloning site Blue=ORF Green=Tags(s)

TTTTGTAATACGACTCACTATAGGGCGGCCGGGAATTCGTCGACTGGATCCGGTACCGAGGAGATCTGCC
 GCC**CGGATCGCC**

ATGTGGCTGCGGCTTGGCCCGCCCTCGTGTCCCTGAGCCCCAAGCCACGGTTGGCAGGAGCCTGTGCC
 TCAACCCTGTGGTTCCCTCAGTTTGGCGCTGAGGGCCAGTACCCAGGCCCCAGCACCCACAGTCAACTCA
 CTTTGGGAAGCTAAGGGGTGCCCGAGTACCACTGCCAGTGAGATCCTGGGGCCTGTGGACCAATACCTG
 GGGGTGCCCTACGCAGCTCCCCGATCGGCGAGAAACGTTTCTGCCCCCTGAACCAACCCCATCTGGT
 CGGGCATCCGGAACGCCACACACTTTCCCCAGTGTGCCCCAGAACATCCACACAGCTGTGCCGAAGT
 CATGCTGCCGGTCTGGTCACTGCCAATTGGATATCGTCGCTACTTACATCCAGGAGCCCAACGAAGAC
 TGTCTCTACCTGAACGTCTATGTCCGACGGAGGATGTAAGCGGATTTCCAAGGAATGCCCCGAAAGC
 CCAACAAGAAAATTTGTAGGAAAGGAGGATCCGGCGCTAAGAAACAGGGCGAGGACTTAGCGGATAATGA
 CGGGGATGAAGATGAAGACATCCGGGACAGTGGTCTAAACCCGTCATGGTCTACATCCACGGAGGCTCT
 TACATGGAAGGGACAGGCAACATGATTGATGGCAGCATCCTCGCCAGTTATGGCAATGTCATCGTCATCA
 CCCTCAACTATCGGGTTGGAGTGTAGGTTTCTGAGTACTGGAGATCAGGCTGCCAAGGGCAACTATGG
 GCTCCTTGACCAGATCCAGGCCCTCCGCTGGGTGAGCGAGAATATTGCCCTTCTCGGGGAGACCCCGC
 CGGATCACTGTCTTTGGCTCGGGCATTGGTGCATCCTGCGTCAGCCTCCTCACGTTGTCACATCACTCAG
 AGGGACTTTTCCAGAGAGCCATCATCAAAGTGGCTCTGCTCTGTCCAGCTGGGCTGTGAACTACCAACC
 AGTGAAGTACACCAGCCTGCTGGCAGACAAAGTGGGCTGTAATGTGCTGGACACCGTGGATATGGTGGAC
 TGTCTTCGGCAAAAGAGTGCCAAGGAGCTGGTAGAGCAGGACATCCAGCCAGCCCGCTACCACGTGGCCT
 TTGGCCCTGTGATTGATGGTGTATTCCTGATGACCCTGAGATCCTCATGGAGCAGGGCGGATTCCT
 CAACTATGACATCATGCTAGGTGTCAACCAGGGCGAGGGTCTCAAGTTTGTGGAAGGGTGGTGGACCCT
 GAGGATGGTGTCTCTGGCACTGACTTTGACTATTCCGTCTCCAATTTTGTGGACAATCTGTATGGCTATC
 CTGAGGGTAAGGACACCCTGCGAGAGACCATCAAGTTCATGTATACAGACTGGGCAGACCGTGACAACCC
 TGAGACCCGCGTAAAACACTGGTGGCACTCTTCACTGACCACCAGTGGGTGGAGCCCTCAGTGGTGA
 GCCGATCTGCATGCCCGCTACGGCTCGCTACCTACTTCTACGCCTTCTATCATCACTGCCAGAGCCTCA
 TGAAGCCTGCTTGGTCAAGTGCAGCTCATGGGGATGAAGTACCCTATGTTTTGGGGTTCCTATGGTAGG
 CCCCCTGACCTTTCCCTGCAACTTCTCCAAGAATGATGTTATGCTCAGTGTGTCGTCATGACCTAT
 TGGACCAACTTTGCCAAGACTGGGGATCCCAACAAGCCGGTCCCCAGGACACCAAGTTCATTACACCA
 AGGCCAACCGCTTTGAGGAAGTGGCCTGGTCCAATAACAATCCCCGAGACCAGCTTACCTTCACATCGG
 GCTGAAACCAAGGGTCCGAGATCATTACCGGGCCACTAAGGTGGCCTTTTGGAAACATCTGGTGCCCCAC
 CTATAACCTGCATGACATGTTCCACTATACGTCCACCACCACCAAAAGTGCCGCTCCGGATACCAACC
 ACAGCTCCACATCACCCGACGGCCCAATGGCAAGACCTGGAGCACCAAGCGGCCAGCCATCTCACCTGC
 CTACAGCAACGAGAATGCCAGGGGTCTGGAACGGGGACAGGATGCAGGGCCACTCCTGGTGGAGAAC
 CCTCGTACTACTCCACTGAATTAAGTGTACCATCGCCGTGGGGCCTCCCTCCTGTTCTTAAAGTTC
 TGGCCTTCGCTGCCCTCTACTACCGTAAGGACAAACGGCGCCAGGAGCCCTGCGGCAGCCTAGCCCTCA
 GCGGGGAGCCGGGCCCCGGAGTTGGGAGCTGCTCCAGAGGAGGAGCTGGCAGCATTACAACCTGGGCCCC
 ACCCACCAGAGTGTGAGCCGGTCCCCCATGACACGCTGCGCCTCACTGCATTGCCCGACTACACCC
 TGACCCTGCGGCCTCCCGGATGACATCCCACTCATGACCCCAACACCATCACTATGATCCCAACTC
 CCTGGTAGGGCTGCAGACATTGCACCCCTATAACACCTTTGCCGAGGGTTCAACAGTACCGGGCTGCC
 CACTCACACTCCACTACCCGGTA

ACGGTACGCGGCCGCTCGAG - GFP Tag - GTTTAA

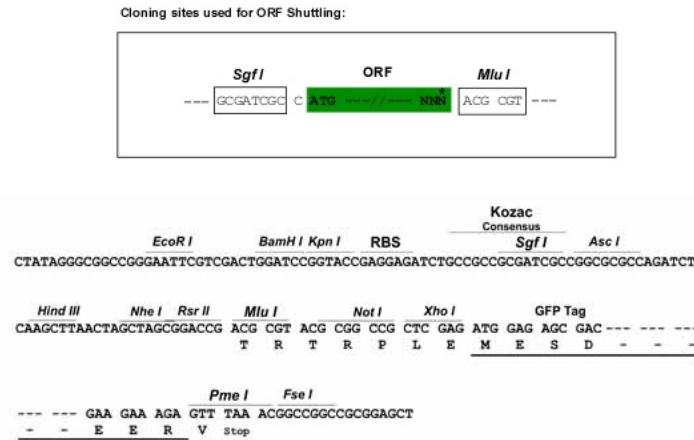
Protein Sequence: >RG230539 representing NM_181303
Red=Cloning site Green=Tags(s)

```

MWLRLGPPSLSLSPKPTVGRSLCLTLWFLSLALRASTQAPAPTVNTHFGKLRGARVPLPSEILGPVDQYL
GVPYAAPPIGEKRFLPPEPPPSWSGIRNATHFPPVCPQNIHTAVPEVMLPVWFTANLDIVATYIQEPNED
CLYLVNYYPTEDVKRISKECARKPNKKICRKGSGAKKQGEDLADNDGDEDEDIRDSGAKPVMVYIHGGS
YMEGTGNMIDGSILASYGNVIVITLNYRVGVLGFLSTGDQAAKGNYGLLDQIQALRWVSENIAFFGGDPR
RITVFGSGIGASCVSLTLSSHSEGLFQRAIIQSGSALSSWAVNYQPVKYTSLLADKVGCNVLDTVDMVD
CLRQKSAKELVEQDIQPARYHVAFGPVIDGDVIPDDPEILMEQGEFLNYDIMLGVNQGEGLKFVEGVVDP
EDGVSGETDFDYSVSNFVDNLYGYPEGKDTLRETIKMYTDWADRDNPETRRKTLVALFTDHQWVEPSVVT
ADLHARYGSPTYFYAFYHHCQSLMKPAWSDAAHGDEVYVFGVPMVGPTDLFPCNF SKNDVMLS AVVMTY
WTNFAKTGDPNKPVPQDTKF IHTKANRFEEVAWSKYNPRDQLYLHIGLKPRVRDHYRATKVAFWKHLVPH
LYNLHDMFHYTSTTTKVPPPDTHSSHITRRPNGKTWSTKRPAISPAYS NENAQGSWNGDQDAGPLLVEN
PRDYSTELSVTIAVGASLLFLNVLAFAALYYRKDKRRQEPLRQPSQRGAGAPELGAAP EEEEL AALQLGP
THHECEAGPPHDTLRLTALPDYTLTLRRSPDDIPLMTPNTITMIPNSLVGLQTLHPYNTFAAGFNSTGLP
HSHSTTRV
    
```

TRTRPLE - GFP Tag - V

Restriction Sites: Sgfl-MluI

Cloning Scheme:


ACCN: NM_181303

ORF Size: 2544 bp

OTI Disclaimer: The molecular sequence of this clone aligns with the gene accession number as a point of reference only. However, individual transcript sequences of the same gene can differ through naturally occurring variations (e.g. polymorphisms), each with its own valid existence. This clone is substantially in agreement with the reference, but a complete review of all prevailing variants is recommended prior to use. [More info](#)

OTI Annotation: This clone was engineered to express the complete ORF with an expression tag. Expression varies depending on the nature of the gene.

Components: The ORF clone is ion-exchange column purified and shipped in a 2D barcoded Matrix tube containing 10ug of transfection-ready, dried plasmid DNA (reconstitute with 100 ul of water).

Reconstitution Method:

1. Centrifuge at 5,000xg for 5min.
2. Carefully open the tube and add 100ul of sterile water to dissolve the DNA.
3. Close the tube and incubate for 10 minutes at room temperature.
4. Briefly vortex the tube and then do a quick spin (less than 5000xg) to concentrate the liquid at the bottom.
5. Store the suspended plasmid at -20°C. The DNA is stable for at least one year from date of shipping when stored at -20°C.

RefSeq: [NM_181303.2](#)

RefSeq Size: 3995 bp

RefSeq ORF: 2547 bp

Locus ID: 54413

UniProt ID: [Q9NZ94](#)

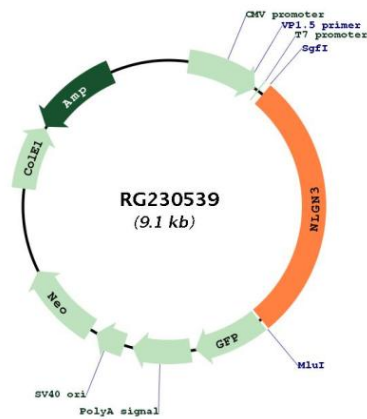
Cytogenetics: Xq13.1

Protein Families: Druggable Genome, Transmembrane

Protein Pathways: Cell adhesion molecules (CAMs)

Gene Summary: This gene encodes a member of a family of neuronal cell surface proteins. Members of this family may act as splice site-specific ligands for beta-neurexins and may be involved in the formation and remodeling of central nervous system synapses. Mutations in this gene may be associated with autism and Asperger syndrome. Multiple transcript variants encoding distinct isoforms have been identified for this gene. [provided by RefSeq, Oct 2009]

Product images:



Circular map for RG230539