

## Product datasheet for **RG230515**

### **FGFR1 (NM\_001174063) Human Tagged ORF Clone**

#### **Product data:**

Product Type:	Expression Plasmids
Product Name:	FGFR1 (NM_001174063) Human Tagged ORF Clone
Tag:	TurboGFP
Symbol:	FGFR1
Synonyms:	bFGF-R-1; BFGFR; CD331; CEK; ECCL; FGFBR; FGFR-1; FLG; FLT-2; FLT2; HBGFR; HH2; HRTFDS; KAL2; N-SAM; OGD
Mammalian Cell Selection:	Neomycin
Vector:	pCMV6-AC-GFP (PS100010)
E. coli Selection:	Ampicillin (100 ug/mL)



[View online »](#)

**ORF Nucleotide Sequence:**

>RG230515 representing NM\_001174063  
 Red=Cloning site Blue=ORF Green=Tags(s)

TTTTGTAATACGACTCACTATAGGGCGGCCGGAATTCGTCGACTGGATCCGGTACCGAGGAGATCTGCC  
 GCC**GCGATCGCC**

ATGTGGAGCTGGAAGTGCCTCCTTTCTGGGCTGTGCTGGTACACGCCACACTCTGCACCGCTAGGCCGT  
 CCCCGACCTTGCCCTGAACAAGCCAGCCCTGGGGAGCCCTGTGGAAGTGGAGTCCCTTCTGGTCCACCC  
 CGGTGACCTGCTGCAGCTTCGCTGTGGCTGCGGGACGATGTGCAGAGCATCAACTGGCTGCGGGACGGG  
 GTGCAGCTGGCGAAAGCAACCGCACCCGCATCACAGGGGAGGAGGTGGAGGTGCAGGACTCCGTGCCCG  
 CAGACTCCGGCCTCTATGCTTGCCTAACAGCAGCCCTCGGGCAGTGACACCACCTACTTCTCCGTCAA  
 TGTTTCAGATGCTCTCCCTCCTCGGAGGATGATGATGATGATGACTCCTTTCAGAGGAGAAAAGA  
 ACAGATAACACCAAAACCAACCGTATGCCCGTAGCTCCATATTGGACATCCCAGAAAAGATGGAAAAGA  
 AATTGCATGCAGTGCCGGCTGCCAAGACAGTGAAGTTCAAATGCCCTTCCAGTGGGACCCCAACCCAC  
 ACTGCGCTGGTTGAAAAATGGCAAAGAATTCAAACCTGACCACAGAATTGGAGGCTACAAGTCCGTTAT  
 GCCACCTGGAGCATCATAATGGACTCTGTGGTGCCTCTGACAAGGGCAACTACACCTGCATTGTGGAGA  
 ATGAGTACGGCAGCATCAACCACACATACCAGCTGGATGTCGTGGAGCGGTCCCTCACCGGCCATCCT  
 GCAAGCAGGGTTGCCCGCAACAAAACAGTGGCCCTGGGTAGCAACGTGGAGTTCATGTGTAAGGTGAC  
 AGTGACCCGCAGCCGCACATCCAGTGGCTAAAGCACATCGAGGTGAATGGGAGCAAGATTGGCCAGACA  
 ACCTGCCTTATGTCCAGATCTTGAAGACTGCTGGAGTTAATACCACCGACAAAGAGATGGAGGTGCTTCA  
 CTTAAGAAATGTCTCCTTTGAGGACGCAGGGGAGTATACGTGCTTGGCGGTAACCTATCGGACTCTCC  
 CATCACTCTGCATGGTTGACCGTCTGGAAGCCCTGGAAGAGAGGCCGGCAGTGTGACCTCGCCCTGT  
 ACCTGGAGATCATCATCTATTGCACAGGGCCTTCCTCATCTCCTGCATGGTGGGTCGGTTCATGCTA  
 CAAGATGAAGAGTGGTACCAAGAAGAGTGACTTCCACAGCCAGATGGCTGTGCACAAGCTGGCCAAGAGC  
 ATCCCTCTGCGCAGACAGGTGTCTGCTGACTCCAGTGCATCCATGAACTCTGGGGTCTTCTGGTTCGGC  
 CATCACGGCTCTCCTCCAGTGGGACTCCCATGCTAGCAGGGGTCTCTGAGTATGAGCTTCCCGAAGACCC  
 TCGCTGGGAGCTGCCTCGGGACAGACTGGTCTTAGGCAAACCCCTGGGAGAGGGCTGCTTTGGCAGGTG  
 GTGTTGGCAGAGGCTATCGGGCTGGACAAGGACAAACCAACCGTGTGACCAAAGTGGCTGTGAAGATGT  
 TGAAGTCGGACGCAACAGAGAAAGACTTGTGACACCTGATCTCAGAAATGGAGATGATGAAGATGATCGG  
 GAAGCATAAGAATATCATCAACCTGCTGGGGCCTGCACGCAGGATGGTCCCTTGTATGTCATCGTGGAG  
 TATGCCTCCAAGGCAACCTGCGGGAGTACCTGCAGGCCCGAGGCCCCAGGGCTGGAATACTGCTACA  
 ACCCCAGCCACAACCCAGAGGAGCAGCTCTCCTCAAGGACCTGGTGTCTGCGCCTACCAGGTGGCCCG  
 AGGCATGGAGTATCTGGCCTCAAGAAGTGCATACACCGAGACCTGGCAGCCAGGAATGTCTGGTGA  
 GAGGACAATGTGATGAAGATAGCAGACTTTGGCCTCGCACGGGACATTACCACATCGACTACTATAAAA  
 AGACAACCAACGGCCGACTGCCTGTGAAGTGGATGGCACCCGAGGCATTATTTGACCGGATCTACACCCA  
 CCAGAGTGTGTTGGTCTTTCCGGGTGCTCCTGTGGGAGATCTCACTCTGGGCGGCTCCCCATACCC  
 GGTGTGCCTGTGGAGGAACCTTTCAAGCTGCTGAAGGAGGGTACCCGCATGGACAAGCCAGTAACCTGCA  
 CCAACGAGCTGTACATGATGATGCGGGACTGCTGGCATGCAGTGCCTCACAGAGACCCACCTTCAAGCA  
 GCTGGTGAAGACCTGGACCGCATCGTGGCCTTGACCTCAACCCAGGAGTACCTGGACCTGTCCATGCC  
 CTGGACCAGTACTCCCCAGCTTTCCCGACACCCGGAGCTCTACGTGCTCCTCAGGGGAGGATTCGTCT  
 TCTCTCATGAGCCGCTGCCCAGGAGCCCTGCCTGCCCGACACCCAGCCAGCTTGCCAATGGCGGACT  
 CAAACGCCGC

**ACGCGT**ACGCGGCCGCTCGAG – GFP Tag – GTTTAA

**Protein Sequence:** >RG230515 representing NM\_001174063  
Red=Cloning site Green=Tags(s)

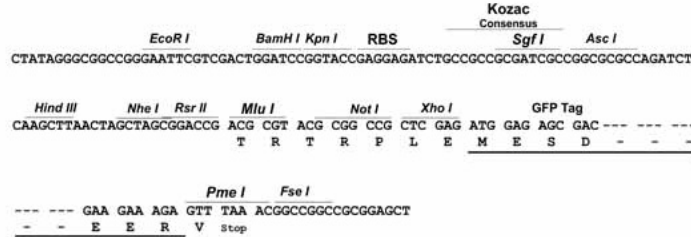
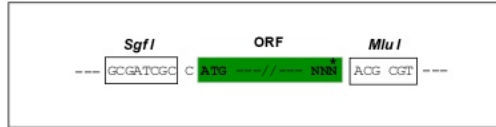
MWSWKCLLFWAVLVATLCTARPSPTLPEQAQPWGAPVEVESFLVHPGDLLQLRCRLRDDVQSINWLRDG  
VQLAESNRTRITGEEVEVQDSVPADSGLYACVTSSPSGSDTTYFSVNVSDALPSSSEDDDDDDSSSEEKE  
TDNTKPNRMPVAPYWTSPEKMEKKLHAVPAAKTVKFKCPSSTPNPTLRWLKNGKEFKPDHRIGGYKVRY  
ATWSIIMDSVVP SDKGNYTCIVENEYGSINHTYQLDVVERSHPHPILQAGLPANKTVALGSNVEFMCKVY  
SDPQPHIQWLKHIEVNGSKI GPDNL PYVQILKTAGVNTT DKEMEVLHLRNVSFEDAGEY TCLAGNSIGLS  
HHSAWLTVLEALEERP AVMTSPLYLEII IYCTGAFLISCMVGSVIYKMKSGTKK SDFHSQMAVHKLAKS  
IPLRRQVSADSSASMNSGVLLVRPSRLSSSGTPMLAGVSEYELPEDPRWELPRDRLVLGKPLGEGCFGQV  
VLAEAIGLDKDKPNRVTKVAVKMLKSDATEKDLSDLISEMEMMKMIGKHKNIINLLGACTQDGPLYVIVE  
YASKGNLREYLQARRPPGLECYNPSHNPEEQ LSSKDLVSCAYQVARGMEYLASKKCIHRDLAARNVLT  
EDNVMKIADFLARDIHHIDYKTTNGRLPVKWMPEALFDRIYTHQSDVWVSGVLLWEIFTLGGSPYP  
GVPVEELFKLLKEGHRMDKPSNCTNELYMMMRDCWHAVPSQRPTFKQLVEDLDRIVALTSNQEYLDLSMP  
LDQYSPSPDTRSTCSSGEDSVFSHEPLPEEPCLPRHPAQLANGGLKRR

TRTRPLE - GFP Tag - V

**Restriction Sites:** Sgfl-MluI

**Cloning Scheme:**

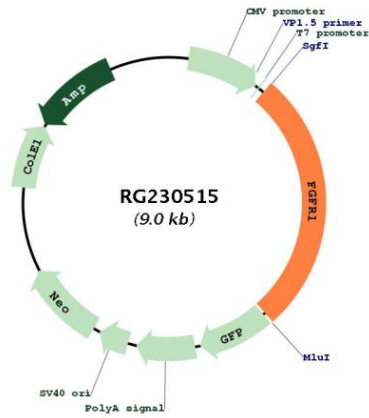
Cloning sites used for ORF Shutting:



- ACCN:** NM\_001174063
- ORF Size:** 2460 bp
- OTI Disclaimer:** The molecular sequence of this clone aligns with the gene accession number as a point of reference only. However, individual transcript sequences of the same gene can differ through naturally occurring variations (e.g. polymorphisms), each with its own valid existence. This clone is substantially in agreement with the reference, but a complete review of all prevailing variants is recommended prior to use. [More info](#)
- OTI Annotation:** This clone was engineered to express the complete ORF with an expression tag. Expression varies depending on the nature of the gene.
- Components:** The ORF clone is ion-exchange column purified and shipped in a 2D barcoded Matrix tube containing 10ug of transfection-ready, dried plasmid DNA (reconstitute with 100 ul of water).

<b>Reconstitution Method:</b>	<ol style="list-style-type: none"><li>1. Centrifuge at 5,000xg for 5min.</li><li>2. Carefully open the tube and add 100ul of sterile water to dissolve the DNA.</li><li>3. Close the tube and incubate for 10 minutes at room temperature.</li><li>4. Briefly vortex the tube and then do a quick spin (less than 5000xg) to concentrate the liquid at the bottom.</li><li>5. Store the suspended plasmid at -20°C. The DNA is stable for at least one year from date of shipping when stored at -20°C.</li></ol>
<b>RefSeq:</b>	<a href="#">NM_001174063.2</a>
<b>RefSeq Size:</b>	5895 bp
<b>RefSeq ORF:</b>	2463 bp
<b>Locus ID:</b>	2260
<b>UniProt ID:</b>	<a href="#">P11362</a>
<b>Cytogenetics:</b>	8p11.23
<b>Protein Families:</b>	Druggable Genome, Protein Kinase, Transmembrane
<b>Protein Pathways:</b>	Adherens junction, MAPK signaling pathway, Melanoma, Pathways in cancer, Prostate cancer, Regulation of actin cytoskeleton
<b>Gene Summary:</b>	<p>The protein encoded by this gene is a member of the fibroblast growth factor receptor (FGFR) family, where amino acid sequence is highly conserved between members and throughout evolution. FGFR family members differ from one another in their ligand affinities and tissue distribution. A full-length representative protein consists of an extracellular region, composed of three immunoglobulin-like domains, a single hydrophobic membrane-spanning segment and a cytoplasmic tyrosine kinase domain. The extracellular portion of the protein interacts with fibroblast growth factors, setting in motion a cascade of downstream signals, ultimately influencing mitogenesis and differentiation. This particular family member binds both acidic and basic fibroblast growth factors and is involved in limb induction. Mutations in this gene have been associated with Pfeiffer syndrome, Jackson-Weiss syndrome, Antley-Bixler syndrome, osteoglophonic dysplasia, and autosomal dominant Kallmann syndrome 2. Chromosomal aberrations involving this gene are associated with stem cell myeloproliferative disorder and stem cell leukemia lymphoma syndrome. Alternatively spliced variants which encode different protein isoforms have been described; however, not all variants have been fully characterized. [provided by RefSeq, Jul 2008]</p>

Product images:



Circular map for RG230515