

Product datasheet for **RG230497**

MUSK (NM_001166280) Human Tagged ORF Clone

Product data:

Product Type:	Expression Plasmids
Product Name:	MUSK (NM_001166280) Human Tagged ORF Clone
Tag:	TurboGFP
Symbol:	MUSK
Synonyms:	CMS9; FADS; FADS1
Mammalian Cell Selection:	Neomycin
Vector:	pCMV6-AC-GFP (PS100010)
E. coli Selection:	Ampicillin (100 ug/mL)



[View online »](#)

ORF Nucleotide Sequence:

>RG230497 representing NM_001166280
 Red=Cloning site Blue=ORF Green=Tags(s)

TTTTGTAATACGACTCACTATAGGGCGGCCGGAATTCGTCGACTGGATCCGGTACCGAGGAGATCTGCC
 GCC**CGCATCGCC**

ATGAGAGAGCTCGTCAACATTCCACTGGTACATATTCTTACTCTGGTTGCCTTCAGCGGAACTGAGAAAC
 TTCAAAAAGCTCCTGTCATCACCACTCCTCTTGAACAGTGGATGCCTTAGTTGAAGAAGTGGCTACTTT
 CATGTGTGCAGTGAATCCTACCCCGAGCTGAGATTTCTGGACTAGAAATAAAATTCTCATTAAACTC
 TTTGACACCCGGTACAGCATCCGGGAGAATGGGCAGCTCCTCACCATCCTGAGTGTGGAAGACAGTGATG
 ATGGCATTACTGCTGCACGGCCAACAATGGTGTGGGAGGAGCTGTGGAGAGTTGTGGAGCCCTGCAAGT
 GAAGATGAAACCTAAAATAACTCGTCTCCATAAATGTGAAAATAATAGAGGGATTAAGAGCAGTCCTA
 CCATGTACTACAATGGGTAAATCCCAAACCATCAGTGTCTGGATAAAGGGAGACAGCCCTCTCAGGGAAA
 ATTCCCGAATTGCAGTTCTTGAATCTGGGAGCTTGAGGATTCATAACGTACAAAAGGAAGATGCAGGACA
 GTATCGATGTGTGCAAAAACAGCCTCGGGACAGCATATTCAAAGTGGTGAAGCTGGAAGTTGAGGAA
 GAAAGTGAACCCGAACAAGATACTAAAGTTTTTGCAGGATCCTGCGGGCTCCTGAATCCCAACAATGTCA
 CCTTTGGCTCCTTTGTGACCCTGCACTGTACAGCAACAGGCATTCTGTCCCCACCATCACTGGATTGA
 AAACGGAATGCTGTTTCTTCTGGGTCCATTCAAGAGAGTGTGAAAGACCGAGTGATTGACTCAAGACTG
 CAGCTGTTATCACCAAGCCAGGACTCTACATAGCATAGCTACCAATAAGCATGGGGAGAAGTTGAGTA
 CTGCCAAGGCTGCAGCCACCATCAGCATAGCAGAATGGAGAGAGTACTGCTTGGCAGTAAAGGAGCTCTT
 CTGCGCAAAAGAATGGCTGGTAAATGGAAGAGAAGCCACAGAGGACTCTACAGATCCGAGATGCATTTG
 CTGTCCGTGCCAGAATGCAGCAAGCTTCCAGCATGCATTGGGACCCACGGCCTGTGCCAGACTGCCAC
 ATCTAGCATTCCACCAATGACGTCTCAAAGCCAAGTGTGGACATTCCAATCTGCCTTCTCTCTCTCT
 TTCTTCTCTCTGTCTCACCTACATACTCCATGACTGTAATAATCTCCATCATGTCCAGCTTTGCAATA
 TTTGTGCTTCTTACCATAACTACTCTCTATTGCTGCCGAAGAAGAAAACAATGAAAAAATAAGAAAAGAG
 AATCAGCAGCAGTAACCCTCACCACTGCCTTCTGAGCTTCTACTAGATAGACTTCATCCCAACCCCAT
 GTACCAGAGGATGCCGCTCCTTCTGAACCCCAAATGCTCAGCCTGGAGTATCCAAGGAATAACATTGAA
 TATGTGAGAGACATCGGAGAGGGAGCGTTTGAAGGGTGTTCAGCAAGGGCACCAGGCTTACTCCCT
 ATGAACCTTCTACTATGGTGGCAGTAAAGATGCTCAAAGAAGAAGCCTCGGCAGATATGCAAGCGGACTT
 TCAGAGGGAGGCAGCCCTCATGGCAGAATTTGACAACCCTAACATTGTGAAGCTATTAGGAGTGTGTGCT
 GTCGGGAAGCCAATGTGCCTGCTCTTTGAATACATGGCCTATGGTACCTCAATGAGTTCTCCGCAGCA
 TGTCCTCCACACCGTGTGCAGCCTCAGTCACAGTGACTTGTCTATGAGGGCTCAGGTCTCCAGCCCTGG
 GCCCCACCCCTCTCTGTGCTGAGCAGCTTGCATTGCCAGGCAGGTGGCAGCTGGCATGGCTTACCTC
 TCAGAAGTAAGTTTGTTCACCGAGATTAGCCACCAGGAACTGCCTGGTGGGCGAGAACATGGTGGTGA
 AAATTGCCGACTTTGGCCTCTCCAGGAACATCTACTCAGCAGACTACTACAAAGCTAATGAAAACGACGC
 TATCCCTATCCGTTGGATGCCACCAGAGTCCATTTTTATAACCGCTACACTACAGAGTCTGATGTGTGG
 GCCTATGGCGTGGTCTCTGGGAGATCTTCTCTATGGCCTGCAGCCCTACTATGGGATGGCCATGAGG
 AGGTCAATTTACTACGTGCGAGATGGCAACATCCTCTCTGCCCTGAGAACTGCCCGTGGAGCTGTACAA
 TCTCATGCGTCTATGTTGGAGCAAGCTGCCTGCAGACAGACCCAGTTTACCAGTATTACCGAATTCGTG
 GAACGCATGTGTGAGAGGGCAGAGGAACTGTGAGTGTG

ACGCGTACGCGGCCGCTCGAG – GFP Tag – GTTTAA

Protein Sequence: >RG230497 representing NM_001166280
 Red=Cloning site Green=Tags(s)

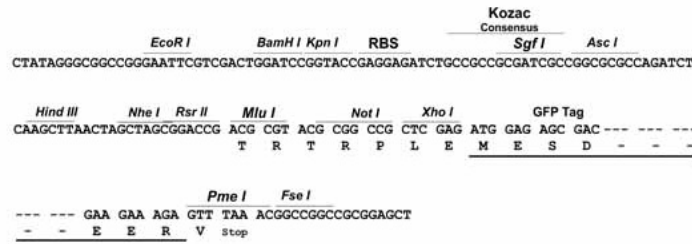
MRELVNIPLVHILTLVAFSGTEKLPKAPVITTPLETVDALVEEVATFMCAVESYPQPEISWTRNKILIKL
 FDTRYSIRENGQLLTILSVEDSDGIYCCTANNGVGGAVESCGALQVKMKPKITRPPINVKIEGLKAVL
 PCTTMGNPKPSVSWIKGDSPLRENSRIAVLESGSLRIHNVQKEDAGQYRCVAKNSLGTAYSKVVKLEVEE
 ESEPEQDTKVFARILRAPESHNVTFGSFVTLHCTATGIPVPTITWIENGNVSSGSIQESVKDRVIDSRL
 QLFITKPLYTCIATNKHGEKFSTAKAAATISIAEWREYCLAVKELFCAKEWLVMEEKTHRGLYRSEMHL
 LSVPECSKLPMSHWDPTACARLPHLAFPPMTSSKPSVDIPNLPSSSSSSFSVSPTYSMTVIIISIMSSFAI
 FVLLTITTLYCCRRRQWKNKKRESAAVTLTLLPSELLDRLHPNPMYQRMPLLLNPKLLSLEYPRNIE
 YVRDIGEGAFGRVFQARAPGLLPYEPFTMVAVKMLKEEASADMQADFQREAAALMAEFDNPNIVKLLGVCA
 VGKPMCLLFEYMAYGDLNEFLRSMSPHTVCSLSHSDL SMRAQVSSPGPPPLSCAEQLCIARQAAGMAYL
 SERKFVHRDLATRNLVGENMVVKIADFGLSRNIYSADYYKANENDAIPIRWMPPEIFYNRYTTESD VW
 AYGVLWEIFSYGLQPYYGMAHEEVIYYVRDGNILSCPENCPVELYNLMRLCWSKLPADRP SFTSIHRIL
 ERMCEAEGTVSV

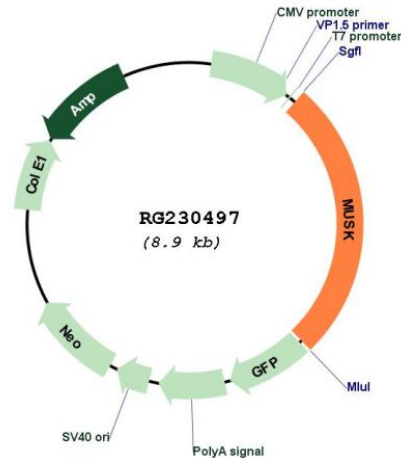
TRTRPLE - GFP Tag - V

Restriction Sites: SgfI-MluI

Cloning Scheme:

Cloning sites used for ORF Shuttling:



Plasmid Map:


ACCN: NM_001166280

ORF Size: 2349 bp

OTI Disclaimer: The molecular sequence of this clone aligns with the gene accession number as a point of reference only. However, individual transcript sequences of the same gene can differ through naturally occurring variations (e.g. polymorphisms), each with its own valid existence. This clone is substantially in agreement with the reference, but a complete review of all prevailing variants is recommended prior to use. [More info](#)

OTI Annotation: This clone was engineered to express the complete ORF with an expression tag. Expression varies depending on the nature of the gene.

Components: The ORF clone is ion-exchange column purified and shipped in a 2D barcoded Matrix tube containing 10ug of transfection-ready, dried plasmid DNA (reconstitute with 100 ul of water).

Reconstitution Method:

1. Centrifuge at 5,000xg for 5min.
2. Carefully open the tube and add 100ul of sterile water to dissolve the DNA.
3. Close the tube and incubate for 10 minutes at room temperature.
4. Briefly vortex the tube and then do a quick spin (less than 5000xg) to concentrate the liquid at the bottom.
5. Store the suspended plasmid at -20°C. The DNA is stable for at least one year from date of shipping when stored at -20°C.

RefSeq: [NM_001166280.2](#)

RefSeq Size: 2496 bp

RefSeq ORF: 2352 bp

Locus ID: 4593

UniProt ID: [O15146](#)

Cytogenetics: 9q31.3

Protein Families: Druggable Genome, Protein Kinase, Transmembrane

Gene Summary: This gene encodes a muscle-specific tyrosine kinase receptor. The encoded protein may play a role in clustering of the acetylcholine receptor in the postsynaptic neuromuscular junction. Mutations in this gene have been associated with congenital myasthenic syndrome. Alternatively spliced transcript variants have been described.[provided by RefSeq, Oct 2009]