

Product datasheet for **RG230294**

IL1RAP (NM_001167928) Human Tagged ORF Clone

Product data:

| | |
|---------------------------|--|
| Product Type: | Expression Plasmids |
| Product Name: | IL1RAP (NM_001167928) Human Tagged ORF Clone |
| Tag: | TurboGFP |
| Symbol: | IL1RAP |
| Synonyms: | C3orf13; IL-1RAcP; IL1R3 |
| Mammalian Cell Selection: | Neomycin |
| Vector: | pCMV6-AC-GFP (PS100010) |
| E. coli Selection: | Ampicillin (100 ug/mL) |



[View online »](#)

ORF Nucleotide Sequence:

>RG230294 representing NM_001167928
 Red=Cloning site Blue=ORF Green=Tags(s)

TTTTGTAATACGACTCACTATAGGGCGGCCGGGAATTCGTCGACTGGATCCGGTACCGAGGAGATCTGCC
 GCC**CGGATCGCC**

ATGACACTTCTGTGGTGTAGTGTAGTCTCTACTTTTATGGAATCCTGCAAAGTGATGCCTCAGAACGCT
 GCGATGACTGGGACTAGACACCATGAGGCAAATCCAAGTGTGAAAGATGAGCCAGCTCGCATCAAGTG
 CCCACTCTTTGAACACTTCTTGAATTCAACTACAGCACAGCCATTCAGCTGGCCTTACTCTGATCTGG
 TATTGGACTAGGCAGGACCGGGACCTTGAGGAGCCAATTAACCTCCGCCTCCCGAGAACCAGCATTAGTA
 AGGAGAAAAGATGTGCTGTGGTCCGGCCACTCTCCTCAATGACACTGGCAACTATACCTGCATGTTAAG
 GAACACTACATATTGCAGCAAAGTTGCATTTCCCTTGGAAAGTTGTTCAAAAAGACAGCTGTTTCAATTCC
 CCCATGAAACTCCAGTGCATAAAGTGTATATAGAATATGGCATTAGAGGATCACTTGTCCAAATGTAG
 ATGGATATTTCCCTTCCAGTGTCAAACCGACTCACTTGGTATATGGGCTGTTATAAAATACAGAATTT
 TAATAATGTAATACCCGAAGGTATGAACCTGAGTTTCCCTATTGCCTAATTTCAAATAATGAAATAC
 ACATGTGTTGTTACATATCCAGAAAATGGAGCTACGTTTCATCTACCAGGACTCTGACTGTAAAGGTAG
 TAGGCTCTCAAAAAATGCAGTGCCCCCTGTGATCCATTCACCTAATGATCATGTGGTCTATGAGAAAGA
 ACCAGGAGAGGAGCTACTCATTCCCTGTACGGTCTATTTAGTTTTCTGATGGATTCTCGCAATGAGGTT
 TGGTGGACCATTGATGGAAAAAACCTGATGACATCACTATTGATGTCACCATTAAACGAAAGTAAAGTC
 ATAGTAGAACAGAAGTAAACAAGAAGTCAAGATTTTGGAGCATCAAGAAAGTTACCTCTGAGGATCTCAA
 GCGCAGCTATGTCTGTATGCTAGAAGTGCCAAAGGCGAAGTTGCCAAAGCAGCCAAGGTGAAGCAGAAA
 GTGCCAGCTCCAAGATACACAGTGAAGTGGCTTGTGGTTTTGGAGCCACAGTCTGCTAGTGGTGATTC
 TCATTGTTGTTTACCATGTTTACTGGCTAGAGATGGTCCTATTTACCGGGCTCATTTTGGAACAGATGA
 AACCATTTTAGATGGAAGAGATGATATTTATGTATCCTATGCAAGGAATGCGGAAGAAGAAGATTT
 GTATTACTGACCTCCGTGGAGTTTTGGAGAATGAATTTGGATACAAGCTGTGCATCTTTGACCGAGACA
 GTCTGCCTGGGGAAATTGTCACAGATGAGACTTTGAGCTTCATTAGAAAAGCAGACGCCTCCTGTTGT
 TCTAAGCCCAACTACGTGCTCCAGGAAACCAAGCCCTCCTGGAGCTCAAGGCTGGCCTAGAAAATATG
 GCCTCTCGGGCAACATCAACGTCATTTTAGTACAGTACAAGCTGTGAAGGAAACGAAGGTGAAAGAGC
 TGAAGAGGGCTAAGACGGTGTACGGTCATTAATGAAAGGGGAAAAATCCAAGTATCCACAGGGCAG
 GTTCTGGAAGCAGCTGCAGGTGGCCATGCCAGTGAAGAAAAGTCCAGGGGCTAGCAGTGATGAGCAG
 GGCTCTCGTATTCATCTTTGAAAAATGTA

ACGCGTACGCGGCCGCTCGAG - GFP Tag - GTTTAA

Protein Sequence:

>RG230294 representing NM_001167928
 Red=Cloning site Green=Tags(s)

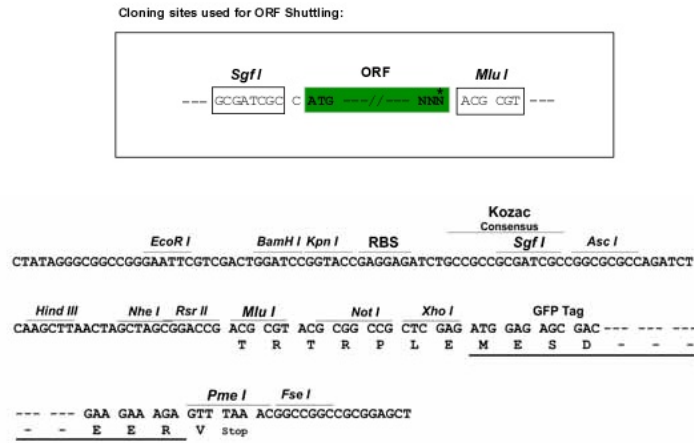
MTLLWCVVSLYFYGILQSDASERCDDWGLDTRMQIQVFEDEPARIKCPLFEHFLKFNYSHTASAGLTLIW
 YWTRQDRDLEEPINFRLPENRISKEKDVLFWRPTLLNDTGNYTCMLRNTTYCSKVAFPLEVVQKDSFCNS
 PMKLPVHKLYIEYGIQRITCPNVDGYFPSSVKPTITWYMGYKIQNFNNVIPEGMNL SFLIALISNNGNY
 TCVVYTPENGRFHLTRTLTVKVVGSPKNAVPPVIHSPNDHVVEKEPGEELLIPCTVYFSFLMDSRNEV
 WWTIDGKKPDDITIDVTINESISHSRTEDETRTQILSIKKVTSIDLKRSYVCHARSAKGEVAKAAKVKQK
 VPAPRYTVELACFGATVLLVILIVVYHVYLEMVLFYRAHFGTDETILDGKEYDIYVSYARNAEEEEF
 VLLTLRGLVENEFGYKLCIFDRDSLPGGIVTDETL SFIQKSRLLLVVLSPNYVLQGTQALLELKAGLENM
 ASRGNINVILVQYKAVKETVKELKRAKTVLTVIKWKGEKSKYPQGRFWQLQVAMPVKKSPRRSSSDEQ
 GLSYSSSLKNV

TRTRPLE - GFP Tag - V

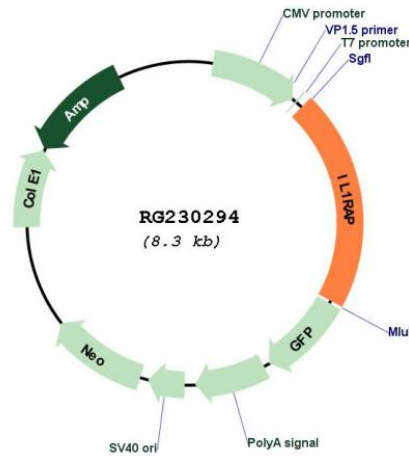
Restriction Sites:

Sgfl-MluI

Cloning Scheme:



Plasmid Map:



ACCN: NM_001167928

ORF Size: 1710 bp

| | |
|-------------------------------|---|
| OTI Disclaimer: | The molecular sequence of this clone aligns with the gene accession number as a point of reference only. However, individual transcript sequences of the same gene can differ through naturally occurring variations (e.g. polymorphisms), each with its own valid existence. This clone is substantially in agreement with the reference, but a complete review of all prevailing variants is recommended prior to use. More info |
| OTI Annotation: | This clone was engineered to express the complete ORF with an expression tag. Expression varies depending on the nature of the gene. |
| Components: | The ORF clone is ion-exchange column purified and shipped in a 2D barcoded Matrix tube containing 10ug of transfection-ready, dried plasmid DNA (reconstitute with 100 ul of water). |
| Reconstitution Method: | <ol style="list-style-type: none">1. Centrifuge at 5,000xg for 5min.2. Carefully open the tube and add 100ul of sterile water to dissolve the DNA.3. Close the tube and incubate for 10 minutes at room temperature.4. Briefly vortex the tube and then do a quick spin (less than 5000xg) to concentrate the liquid at the bottom.5. Store the suspended plasmid at -20°C. The DNA is stable for at least one year from date of shipping when stored at -20°C. |
| RefSeq: | NM_001167928.2 |
| RefSeq Size: | 4965 bp |
| RefSeq ORF: | 1713 bp |
| Locus ID: | 3556 |
| UniProt ID: | Q9NPH3 |
| Cytogenetics: | 3q28 |
| Protein Families: | Druggable Genome, Secreted Protein, Transmembrane |
| Protein Pathways: | Apoptosis, Cytokine-cytokine receptor interaction |
| Gene Summary: | This gene encodes a component of the interleukin 1 receptor complex, which initiates signalling events that result in the activation of interleukin 1-responsive genes. Alternative splicing of this gene results in membrane-bound and soluble isoforms differing in their C-terminus. The ratio of soluble to membrane-bound forms increases during acute-phase induction or stress. [provided by RefSeq, Jul 2018] |