

## Product datasheet for **RG229686**

### VEGFA (NM\_001171625) Human Tagged ORF Clone

#### Product data:

**Product Type:** Expression Plasmids  
**Product Name:** VEGFA (NM\_001171625) Human Tagged ORF Clone  
**Tag:** TurboGFP  
**Symbol:** VEGFA  
**Synonyms:** MVCD1; VEGF; VPF  
**Mammalian Cell Selection:** Neomycin  
**Vector:** pCMV6-AC-GFP (PS100010)  
**E. coli Selection:** Ampicillin (100 ug/mL)  
**ORF Nucleotide Sequence:** >RG229686 representing NM\_001171625  
Red=Cloning site Blue=ORF Green=Tags(s)

TTTTGTAATACGACTCACTATAGGGCGCCGGGAATTCGTCGACTGGATCCGGTACCGAGGAGATCTGCC  
GCC**CGATCGCC**

ATGAACCTTCTGCTGTCTGGGTGCATTGGAGCCTTGCCCTTGCTGCTCTACCTCCACCATGCCAAGTGGT  
CCCAGGCTGCACCCATGGCAGAAGGAGGAGGGCAGAATCATCACGAAGTGGTGAAGTTTCATGGATGTCTA  
TCAGCGCAGCTACTGCCATCCAATCGAGACCCTGGTGGACATCTCCAGGAGTACCCTGATGAGATCGAG  
TACATCTCAAGCCATCCTGTGTGCCCTGATGCGATGCGGGGGCTGCTGCAATGACGAGGGCCTGGAGT  
GTGTGCCACTGAGGAGTCCAACATCCCATGCAGATTATGCGGATCAAACCTCACCAAGGCCAGCACAT  
AGGAGAGATGAGCTTCTACAGCAACAATGTGAATGCAGACCAAGAAAGATAGAGCAAGACAAGAA  
AAAAATCAGTTCGAGGAAAGGAAAGGGGCAAAAACGAAAGCGCAAGAAATCCCGTCCCTGTGGGCCTT  
GCTCAGAGCGGAGAAAGCATTGTTTGTACAAGATCCGCAGACGTGATAATGTTCTGCAAAAACACAGA  
CTCGCGTTGCAAGGCGAGGCAGCTTGAATTAACGAACGTAATGTCAGATGTGACAAGCCGAGGCGG

**ACGCGTACGCGGCCGCTCGAG** - GFP Tag - GTTTAA

**Protein Sequence:** >RG229686 representing NM\_001171625  
Red=Cloning site Green=Tags(s)

MNFLLSWVHSLALLLYLHHAKWSQAAPMAEGGGQNHHEVVKFMDVYQRSYCHPIETLVDIFQEYPDEIE  
YIFKPSCVPLMRCGGCCNDEGLECVPTESNITMQIMRIKPHQGQHI GEMSFLQHNKCECRPKKDRARQE  
KKSVRGKGGKQKRKRKSRPCGPCSERRKHLFVQDPQTCKSCKNTRSCKARQLELNERTCRCDKPRR

**TRTRPLE** - GFP Tag - V

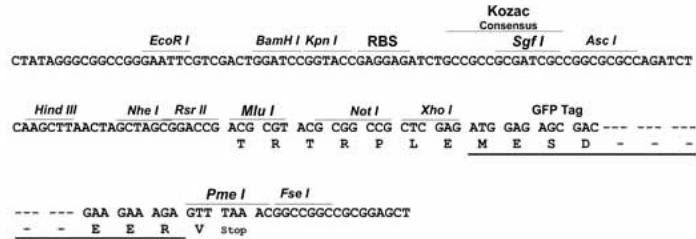
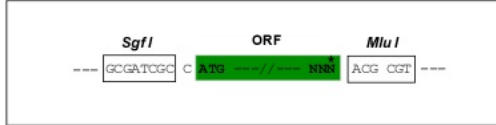
**Restriction Sites:** SgfI-MluI



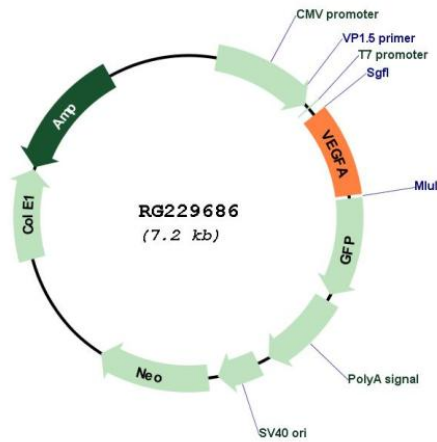
[View online »](#)

Cloning Scheme:

Cloning sites used for ORF Shutting:



Plasmid Map:



ACCN: NM\_001171625  
 ORF Size: 627 bp

<b>OTI Disclaimer:</b>	<p>Due to the inherent nature of this plasmid, standard methods to replicate additional amounts of DNA in E. coli are highly likely to result in mutations and/or rearrangements. Therefore, OriGene does not guarantee the capability to replicate this plasmid DNA. Additional amounts of DNA can be purchased from OriGene with batch-specific, full-sequence verification at a reduced cost. Please contact our customer care team at <a href="mailto:custsupport@origene.com">custsupport@origene.com</a> or by calling 301.340.3188 option 3 for pricing and delivery.</p> <p>The molecular sequence of this clone aligns with the gene accession number as a point of reference only. However, individual transcript sequences of the same gene can differ through naturally occurring variations (e.g. polymorphisms), each with its own valid existence. This clone is substantially in agreement with the reference, but a complete review of all prevailing variants is recommended prior to use. <a href="#">More info</a></p>
<b>OTI Annotation:</b>	This clone was engineered to express the complete ORF with an expression tag. Expression varies depending on the nature of the gene.
<b>Components:</b>	The ORF clone is ion-exchange column purified and shipped in a 2D barcoded Matrix tube containing 10ug of transfection-ready, dried plasmid DNA (reconstitute with 100 ul of water).
<b>Reconstitution Method:</b>	<ol style="list-style-type: none"> <li>1. Centrifuge at 5,000xg for 5min.</li> <li>2. Carefully open the tube and add 100ul of sterile water to dissolve the DNA.</li> <li>3. Close the tube and incubate for 10 minutes at room temperature.</li> <li>4. Briefly vortex the tube and then do a quick spin (less than 5000xg) to concentrate the liquid at the bottom.</li> <li>5. Store the suspended plasmid at -20°C. The DNA is stable for at least one year from date of shipping when stored at -20°C.</li> </ol>
<b>RefSeq:</b>	<a href="#">NM_001171625.1</a> , <a href="#">NP_001165096.1</a>
<b>RefSeq Size:</b>	3608 bp
<b>RefSeq ORF:</b>	630 bp
<b>Locus ID:</b>	7422
<b>UniProt ID:</b>	<a href="#">P15692</a>
<b>Cytogenetics:</b>	6p21.1
<b>Protein Families:</b>	Druggable Genome, Secreted Protein
<b>Protein Pathways:</b>	Bladder cancer, Cytokine-cytokine receptor interaction, Focal adhesion, mTOR signaling pathway, Pancreatic cancer, Pathways in cancer, Renal cell carcinoma, VEGF signaling pathway

**Gene Summary:**

This gene is a member of the PDGF/VEGF growth factor family. It encodes a heparin-binding protein, which exists as a disulfide-linked homodimer. This growth factor induces proliferation and migration of vascular endothelial cells, and is essential for both physiological and pathological angiogenesis. Disruption of this gene in mice resulted in abnormal embryonic blood vessel formation. This gene is upregulated in many known tumors and its expression is correlated with tumor stage and progression. Elevated levels of this protein are found in patients with POEMS syndrome, also known as Crow-Fukase syndrome. Allelic variants of this gene have been associated with microvascular complications of diabetes 1 (MVCD1) and atherosclerosis. Alternatively spliced transcript variants encoding different isoforms have been described. There is also evidence for alternative translation initiation from upstream non-AUG (CUG) codons resulting in additional isoforms. A recent study showed that a C-terminally extended isoform is produced by use of an alternative in-frame translation termination codon via a stop codon readthrough mechanism, and that this isoform is antiangiogenic. Expression of some isoforms derived from the AUG start codon is regulated by a small upstream open reading frame, which is located within an internal ribosome entry site. The levels of VEGF are increased during infection with severe acute respiratory syndrome coronavirus 2 (SARS-CoV-2), thus promoting inflammation by facilitating recruitment of inflammatory cells, and by increasing the level of angiotensin II (Ang II), one of two products of the SARS-CoV-2 binding target, angiotensin-converting enzyme 2 (ACE2). In turn, Ang II facilitates the elevation of VEGF, thus forming a vicious cycle in the release of inflammatory cytokines. [provided by RefSeq, Jun 2020]