

Product datasheet for **RG228657**

KCNMA1 (NM_001161352) Human Tagged ORF Clone

Product data:

Product Type:	Expression Plasmids
Product Name:	KCNMA1 (NM_001161352) Human Tagged ORF Clone
Tag:	TurboGFP
Symbol:	KCNMA1
Synonyms:	bA205K10.1; BKTM; CADEDS; hSlo; IEG16; KCa1.1; LIWAS; MaxiK; mSLO1; PNKD3; SAKCA; SLO; SLO-ALPHA; SLO1
Mammalian Cell Selection:	Neomycin
Vector:	pCMV6-AC-GFP (PS100010)
E. coli Selection:	Ampicillin (100 ug/mL)
ORF Nucleotide Sequence:	>RG228657 representing NM_001161352 Red=Cloning site Blue=ORF Green=Tags(s)

TTTTGTAATACGACTCACTATAGGGCGGCCGGGAATTCGTCGACTGGATCCGGTACCGAGGAGATCTGCC
GCC**CGATCGCC**

ATGGCAAATGGTGGCGGGCGGGCGGCAGCAGCGGGCGGGCGGGCGGGCGGGAGGCAGCAGTCTTA
GAATGAGTAGCAATATCCACGCGAACCATCTCAGCCTAGACGCGTCTCTCTCTCTCTCTCTCTCT
CTCTTCTTCTTCT
ATCCCGGTGACCATGGAGGTGCCGTGCGACAGCCGGGGCAACGCATGTGGTGGGCTTCTCTGGCCTCT
CCATGGTGACTTCTCTGGGGGCTCTTCATCATCTTGCTCTGGCGGACGCTCAAGTACCTGTGGACCGT
GTGCTGCCACTGCGGGGCAAGACGAAGGAGGCCAGAAGATTAACAATGGCTCAAGCCAGGCGGATGGC
ACTCTCAAACCAGTGGATGAAAAAGAGGAGGCAGTGGCCGCCGAGGTCGGCTGGATGACCTCCGTGAAGG
ACTGGGCGGGGGTATGATATCCGCCAGACACTGACTGGCAGAGTCTGGTTGTCTTAGCTTTTGTCTCT
CAGCATCGGTGCACTTGAATATACTTCATAGATTCATCAAACCAATAGAATCTCGCCAGAATTTCTAC
AAAGATTTACATTACAGATCGACATGGCTTTCACAGTGTCTCTCTCTCTCTCTCTCTCTCTCTCTCT
TTGCAGCCAACGATAAATGTGGTTCTGGCTGGAAGTGAAGTCTGTAGTGGATTTCTTACCGGTGCCCCC
CGTGTTTGTGTCTGTACTTAAACAGAAGTGGCTTGGTTTGGATTTTAAAGAGCTCTGAGACTGATA
CAGTTTTCAGAAATTTTCAGTTTCTGAATATTCTTAAACAAGTAATCCATCAAGCTGGTGAATCTGC
TCTCCATATTTATCAGCACGTGGCTGACTGCAGCCGGTTCATCCATTTGGTGGAGAATTCAGGGGACCC
ATGGGAAAATTTCAAACAACCAAGGCTCTCACCTACTGGGAATGTGTCTATTTACTCATGGTCAACAATG
TCCACCGTTGGTTATGGGGATGTTTATGCAAAAACACACTTGGGCGCCTTTCATGGTCTTCTTTCATCC
TCGGGGGACTGGCCATGTTTGCCAGCTACGTCCCTGAAATCATAGAGTTAATAGGAAACCGCAAGAATA
CGGGGGCTCTATAGTGCGGTTAGTGAAGAAAGCACATTGTGGTCTGCGGACACATCACTCTGGAGAGT
GTTTCCAACCTTCTGAAGGACTTCTGCACAAGGACCGGGATGACGTCAATGTGGAGATCGTTTTTCTCT
ACAACATCTCCCCAACCTGGAGCTTGAAGCTCTGTTCAAACGACATTTTACTCAGTGGAATTTTATCA



GGGTTCCGTCCTCAATCCACATGATCTTGCAAGAGTCAAGATAGAGTCAGCAGATGCATGCCTGATCCTT
GCCAACAAAGTACTGCGCTGACCCGGATGCGGAGGATGCCTCGAATATCATGAGAGTAATCTCCATAAAGA
ACTACCATCCGAAGATAAGAATCACTCAAAATGCTGCAGTATCACAACAAGGCCCATCTGCTAAACAT
CCCGAGCTGGAATTGGAAAGAAGGTGATGACGCAATCTGCCTCGCAGAGTTGAAGTTGGGCTTCATAGCC
CAGAGCTGCCTGGCTCAAGGCCTCTCCACCATGCTTGCCAACCTTTCTCCATGAGGTATTTCATAAAGA
TTGAGGAAGACACATGGCAGAAATACTACTTGGAAAGGAGTCTCAAATGAAATGTACACAGAATATCTCTC
CAGTGCCTTCGTGGGTCTGTCTCCCTACTGTTTGTGAGCTGTGTTTTGTGAAGCTCAAGCTCCTAATG
ATAGCCATTGAGTACAAGTCTGCCAACCGAGAGAGCCGTATATTAATTAATCCTGGAAACCATCTTAAGA
TCCAAGAAGTACTTTAGGATTTTTTCATCGCAAGTGTGCCAAAGAAGTTAAAAGGGCATTTTTTTACTG
CAAGGCCTGTCATGATGACATCACAGATCCCAAAGAATAAAAAAATGTGGCTGCAAACGGCCCAAGATG
TCCATCTACAAGAGAATGAGACGGGCATGTTGTTTTGATTGCGGACGTTCTGAGCGTGACTGCTCATGCA
TGTCAGGCCGTGTGCGTGGTAACGTGGACACCCTTGAGAGAGCCTTCCCACTTTCTTCTGTCTCTGTTAA
TGATTGCTCCACCAGTTCCGTGCCTTTGAAGATGAGCAGCCGTCAACACTATCACCAAAAAAAAAAGCAA
CGGAATGGAGGCATGCGAACTACCCAACACCTCGCCTAAGCTGATGAGGCATGACCCCTGTGTAATTC
CTGGCAATGATCAGATTGACAACATGGACTCCAATGTGAAGAAGTACGACTCTACTGGGATGTTTACTG
GTGTGCACCCAAGGAGATAGAGAAAGTCACTCTGACTCGAAGTGAAGCTGCCATGACCGTCTGAGTGGC
CATGTCTGTGCTGCATCTTTGGCGACGTGAGCTCAGCCCTGATCGGCCTCCGGAACCTGGTGTGACCCG
TCCGTGCCAGCAACTTTCATTACCATGAGCTCAAGCACATTGTGTTTTGTGGGCTCTATTGAGTACCTCAA
GCGGGAATGGGAGACGCTTCATAACTTCCCAAAGTGTCCATATTGCCTGGTACGCCATTAAGTCGGGCT
GATTTAAGGGCTGTCAACATCAACCTCTGTGACATGTGCGTTATCCTGTGAGCCAATCAGAATAATTTG
ATGATACTTCGCTGCAGGACAAGGAATGCATCTTGGCGTCACTCAACATCAAATCTATGCAGTTTGATGA
CAGCATCGGAGTCTTGCAGGCTAATCCCAAGGGTTCACACCTCCAGGAATGGATAGATCCTCTCCAGAT
AACAGCCAGTGCACGGGATGTTACGTCAACATCCATCACAACCTGGGGTCAACATCCCCATCATCACTG
AACTAGTGAACGATACTAATGTTCAAGTTTTGGACCAAGACGATGATGATGACCCGTATACAGAAGTGA
CCTCACGACGCCCTTTGCCTGTGGGACAGCATTGCGCGTCAAGTGTCTGACTCACTCATGAGCGGACG
TACTTCAATGACAATATCCTCACCTGATACGGACCCTGGTGACCGGAGGAGCCACGCCGGAGCTGGAGG
CTCTGATTGCTGAGGAAAACGCCCTTAGAGGTGGCTACAGCACCCCGCAGACTGGCCAATAGGGACCG
CTGCCGCTGGCCAGTTAGCTCTGCTCGATGGGCCATTTGCGGACTTAGGGGATGGTGGTTGTTATGGT
GATCTGTTCTGCAAAGCTCTGAAAACATATAATATGCTTTGTTTTGGAATTTACCGGCTGAGAGATGCTC
ACCTCAGCACCCCGAGTCAGTGCACAAAGAGGTATGTCATCACCAACCCGCCCTATGAGTTTGAGCTCGT
GCCGACGGACCTGATCTTCTGCTTAATGCAGTTTGACCACAATGCCGGCCAGTCCCGGGCCAGCCTGTCC
CATTCTCCCACTCGTCGAGTCTCCAGCAAGAAGAGCTCCTCTGTTCACTCCATCCCATCCACAGCAA
ACCGACAGAACCAGCCCAAGTCCAGGGAGTCCCGGGACAAACAGAAGTACGTGCAGGAAGAGCGGCTT

AGCGGACCGACGCGTACGCGGCCGCTCGAG - GFP Tag - GTTTAA

Protein Sequence: >RG228657 representing NM_001161352
 Red=Cloning site Green=Tags(s)

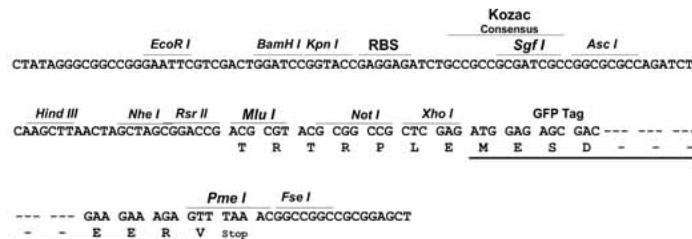
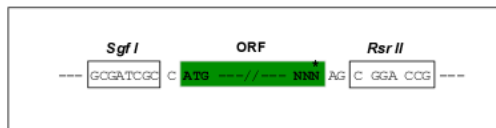
MANGGGGGGGSSGGGGGGSSLRMSSNIHANHLSLDASSSSSSSSSSSSSSSSSSSSSSSVHEPKMDALI
 IPVTMEVPCDSRQRMWWAFLASSMVTFFGGFLIILLWRTLKYLWTVCCCHCGGKKEAQKINNGSSQADG
 TLKPVDEKEEAVAAEVGWMTSVKDWAGVMISAQTLTGRVLLVLFALSIGALVIYFIDSSNPIESCQNFY
 KDFTLQIDMAFNVFLLYFGLRFIAANDKLWFLEVNVSVDFFTVPPVFVSVYLNRSWLGRLRFLRALRLI
 QFSEILQFLNILKTSNSIKLVNLLSIFISTWLTAAGFHILVENSGDPWENFQNNQALTYWECVYLLMVTM
 STVGYGDVYAKTTLGRLFMVFFILGGLAMFASYVPEIIEILIGNRKKYGGSYSAVSGRKHIVVCGHITLES
 VSNFLKDFLHKDRDDVNVEIVFLHNI SPNLELEALFKRHFTQVEFYQGSVLNPHDLARVKIESADAACLIL
 ANKYCADPDAEDASNIMRVISIKNYHPKIRIITQMLQYHNKAHLLNIPSWNKEGDDAICLAELKLGFAIA
 QSCLAQGLSTMLANLFSMRSFIKIEEDTWQKYYLEGVSNEMYTEYLSAFVGLSFPTVCELFCVVKLLLM
 IAIEYKSANRESRILINPGNHLKIQEGTLGFFIASDAKEVKRAFFYCKACHDDITDPKRIKCKGCKRPM
 SIYKMRMRACCFDCGRSERDCSCMSGRVGRNVDTLERAFPLSSVSNDCSTSFRAFEDEQPSTLSPKKKQ
 RNGGMRNSPNTSPKLMRHDPLLIPGNDQIDNMDSNVKKYDSTGMFHWCAPKEIEKVILTRSEAAMTVLSG
 HVVVCIFGDVSSALIGLRNLVMPLRASNFHYHELKHIVFVGSIEYLKREWETLHNFPKVSIPLPGTPLSRA
 DLRAVNINLDCMCVILSANQNNIDDTSLQDKECILASLNIKSMQFDDSIGVLQANSQGFTPPGMDRSPD
 NSPVHGLMRQPSITTVNIPITELVNDTNVQFLDQDDDDDPTELYLTQPFACGTAFVSVLDSLMSAT
 YFNDNILTLIRTLVTGGATPELEALIAEENALRGGYSTPQTLANRDRCRVAQLALLDGPFADLGGGCGY
 DLFCKALKTYNMLCFGIYRLRDAHLSTPSQCTKRYVITNPPYEFELVPTDLIFCLMQFDHNAGQSRASLS
 HSSHSSQSSSKSSSVHSIPSTANRQNRPKSRESRDKQKYVQEERL

SGPTRRRLE - GFP Tag - V

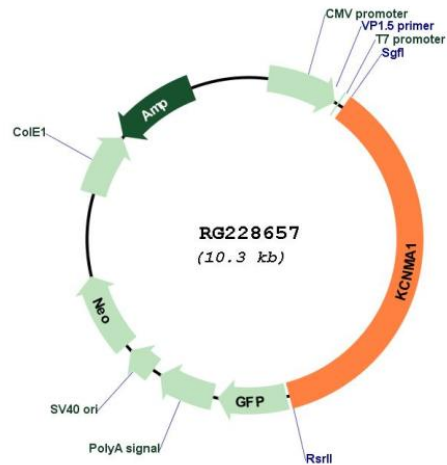
Restriction Sites: SgfI-RsrII

Cloning Scheme:

Cloning sites used for ORF Shuttling:



Plasmid Map:



ACCN: NM_001161352

ORF Size: 3708 bp

OTI Disclaimer: Due to the inherent nature of this plasmid, standard methods to replicate additional amounts of DNA in *E. coli* are highly likely to result in mutations and/or rearrangements. Therefore, OriGene does not guarantee the capability to replicate this plasmid DNA. Additional amounts of DNA can be purchased from OriGene with batch-specific, full-sequence verification at a reduced cost. Please contact our customer care team at custsupport@origene.com or by calling 301.340.3188 option 3 for pricing and delivery.

The molecular sequence of this clone aligns with the gene accession number as a point of reference only. However, individual transcript sequences of the same gene can differ through naturally occurring variations (e.g. polymorphisms), each with its own valid existence. This clone is substantially in agreement with the reference, but a complete review of all prevailing variants is recommended prior to use. [More info](#)

OTI Annotation: This clone was engineered to express the complete ORF with an expression tag. Expression varies depending on the nature of the gene.

Components: The ORF clone is ion-exchange column purified and shipped in a 2D barcoded Matrix tube containing 10ug of transfection-ready, dried plasmid DNA (reconstitute with 100 ul of water).

Reconstitution Method:

1. Centrifuge at 5,000xg for 5min.
2. Carefully open the tube and add 100ul of sterile water to dissolve the DNA.
3. Close the tube and incubate for 10 minutes at room temperature.
4. Briefly vortex the tube and then do a quick spin (less than 5000xg) to concentrate the liquid at the bottom.
5. Store the suspended plasmid at -20°C. The DNA is stable for at least one year from date of shipping when stored at -20°C.

RefSeq:	NM_001161352.2
RefSeq Size:	6294 bp
RefSeq ORF:	3711 bp
Locus ID:	3778
UniProt ID:	Q12791
Cytogenetics:	10q22.3
Protein Families:	Druggable Genome, Ion Channels: Potassium, Transmembrane
Protein Pathways:	Vascular smooth muscle contraction
Gene Summary:	MaxiK channels are large conductance, voltage and calcium-sensitive potassium channels which are fundamental to the control of smooth muscle tone and neuronal excitability. MaxiK channels can be formed by 2 subunits: the pore-forming alpha subunit, which is the product of this gene, and the modulatory beta subunit. Intracellular calcium regulates the physical association between the alpha and beta subunits. Alternatively spliced transcript variants encoding different isoforms have been identified. [provided by RefSeq, Jul 2008]