

Product datasheet for **RG227765**

C8orf45 (MCMDC2) (NM_001136160) Human Tagged ORF Clone

Product data:

Product Type:	Expression Plasmids
Product Name:	C8orf45 (MCMDC2) (NM_001136160) Human Tagged ORF Clone
Tag:	TurboGFP
Symbol:	MCMDC2
Synonyms:	C8orf45
Mammalian Cell Selection:	Neomycin
Vector:	pCMV6-AC-GFP (PS100010)
E. coli Selection:	Ampicillin (100 ug/mL)



[View online »](#)

ORF Nucleotide Sequence:

>RG227765 representing NM_001136160
 Red=Cloning site Blue=ORF Green=Tags(s)

TTTTGTAATACGACTCACTATAGGGCGGCCGGAATTCGTCGACTGGATCCGGTACCGAGGAGATCTGCC
 GCC**GCGATCGCC**

ATGTCAAATCTAAAAATGAAAGAGGCGGCCCTCATCTATCTTGACAGAAGTGAGGCCTCCAAAAGTTTA
 TAGATGATTGCAAGTACTACAATGATTCAAAACAAAGCTATGCTGTCTATCGATTCAAAATTTAATAAAA
 TCCTCTGATGTTGTAATTAGATGCTGAGCTTGAAATCACATTTTACACCAACCTTTAAAAGCTGCT
 GAAGTCTTTCAATCAGTCTGTTTTATTGCTGTTAAGACTCTCTCATTAAATTGGACAATTGCAGACTGAAA
 CGCAAATTAATATAGTGTGAAATTAACACATTTACCTCCCTGCCAAGTTATGGTCTTGATCTTTGTGA
 GTTCCACTTGATTATACATCTCAGAGATTTTATATGATGCAAGGAATTGTGATTGCAATGACAATA
 ACCAAGTATACACAAGGGCAAGATTTCTTTGTTGAGTGAAGCATGCCCTCTTCAAAGGATTTTCAGT
 ATATAAGAGTGCATGTGCTGGTGTACAGAATCTGCAACGATAAGAAAATGACTTTTTGTGAATCTATG
 TGCATCTTCACTCAAGAAGACAGAAAATTTAGAGTACTTGGTGATAACAAAATAGTTGAAATAATTGCC
 ACAAAGGCACTTCGTGCTTTTCAAGGATATTCTAACAACCAGCCATTTAGGTTTCAATCACTTACAATTT
 TCTAAGAGATGAATCAGTGAATAAAATGAATATAGGAAATGAATATAAAATTATTGGAATTCACACCTG
 TGTAAAACTCACAACCTGCTGTCTGTATAGAAGCAATAGCATAACTTTTTGTAATTCAAAAGTTCTCT
 TCAGGAATTAGTGACAACCTCAGGTGCTCCTCTCCTTAACTCCAGCTCATGCTGGAAGTTTACAGCAA
 TACTTGCCAAATCTTTGCATCACAATACCCTCCTGGGACTTACAATTTGCTCAAGCTCTGTTTGT
 GATGAGTCTAGTACAGACAACCTGACCGTAAAGGAAGTGAAGATTGCCTGGATATTTAATTATAACA
 AGTGATACTTACTCATAGACAGGCTTCTGAATTTTAGCATAAACCTTGCCCCGTGGTATACGTCATC
 TAGTCTTACTGAAATTTTCCCACTCTATCCAGGAATAAGTATGGAAGTGGAGCAGTTAGCAATCAGCG
 TGGCAGTGCTTTGCTAGCTAAAGGTGGTATCTGCTTTATAGGAGACTTGGCTTACACAAAAAAGATAAA
 CTTGAACAGCTTCAAACAGTTCTGGAGAGCAGAAGCATCACAGTGTACATCCCAGGAAAGAAAGTTGGGG
 AGGATATTGATCAACAGATGACTTTTCCAGTTCAGTGCAGTTTTTGGTCTTTTGTGATGTGGATTCATC
 TTCAAGGAGAAATGCACAGAAAATCAACACTCTAATTGGTCCAGATGGATTGCAGTTTGATTCCAGCTAAC
 CTTGTGGAGGCATTTGGTTTATTGATTAAGTCAACGAGTCTCCTGCCACCCATTTCTTCTACTG
 TGCAACACTTTGAACAAAGCCATTAATCCTGAAGGGCTGTTTTATGCGGCTTCTAGACAGTTCACAAC
 TGAAGATTTTAAAAGCTATTGGCTTTTCAAAGAATTTGAATGTAGAATTCAGCTTGAAGCAGAAAGA
 ATGACCCATGGCTATTATCTAGCAAGTGCAGAAATCAGAACAGGCTCTGTATGTGGATCAAGCTGTCAG
 CATCTGCATTAATAATCTCGTTTTCTATCTGAAGCCATGCACGACTGAACCTAAGGAACAAAGTGTCT
 TAAAGAAGATGTGCTGATTGCAGCCTTACTATTTGAAACATCCCTCACATTGAAATATGGTAATGAATTA
 AATTAT

ACGCGTACGCGGCCGCTCGAG – GFP Tag – GTTTAA

Protein Sequence:

>RG227765 representing NM_001136160
 Red=Cloning site Green=Tags(s)

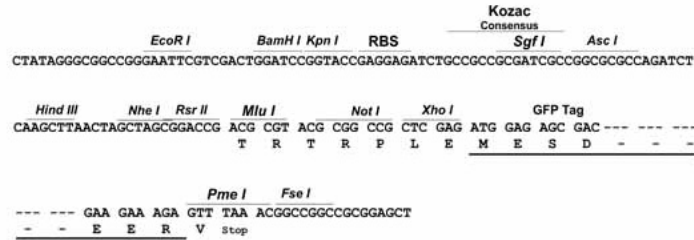
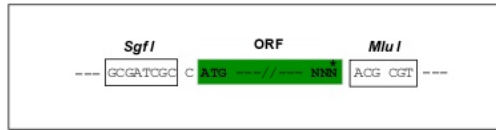
MSNLMKMEAALIYLD RSGGLQKFIDDCYYNDSKQSYAVYRFKILINPSDVVELDAELGNHILHQPLKAA
 EVFQSVCFI AVKTL SLIGQLQ TETQINIVLKLTHLPPLPSYGLDLCEFPDYTSQRFYMMQGI VIAMTTI
 TKYTQGARFLCSDEACPLSKGFQYIRVHVPGATESATIRNDFLCNL CASSLQEDRKFRVLGDKQIVEIIA
 TKALRAFQGYSNQPFQSLTIFLRDESVMNKMIGNIYKIIIGIPTCVKTSQTAVCIEANSITFCNSKVP
 SGI SDNFRCLLSL TSSSCWKFTAILANIFASQITPPGTYNLLKLCLLMSLVQTTDRNKELEDCLDIL IIT
 SDTLLIDRLLNFSINLVPRGIRHLVSTEIFPTLSRNKYGTGAVSIQAGSALLAKGGICF IGDLASHKDK
 LEQLQTVLESRSITVYIPGKFGEDIDQMTFPVQCSFWSFVDVDSRRNAQKINTLIGQMDCSLIIPAN
 LVEAFGLLINCNESSPCHPFLPTVQHTLNKAINPEGLFYAASRQFTTDFEKL LAFKLNLVFESLEAER
 MTHGYLASRRIRTSVCGSKLSASALKYL VFLSEAHARLNLRNKV LKEDVLI AALLFETSLTKYGNEL
 NY

TRTRPLE – GFP Tag – V

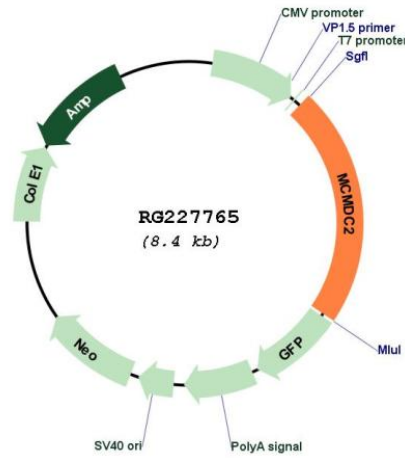
Restriction Sites: SgfI-MluI

Cloning Scheme:

Cloning sites used for ORF Shutting:



Plasmid Map:



ACCN: NM_001136160

ORF Size: 1896 bp

OTI Disclaimer:	The molecular sequence of this clone aligns with the gene accession number as a point of reference only. However, individual transcript sequences of the same gene can differ through naturally occurring variations (e.g. polymorphisms), each with its own valid existence. This clone is substantially in agreement with the reference, but a complete review of all prevailing variants is recommended prior to use. More info
OTI Annotation:	This clone was engineered to express the complete ORF with an expression tag. Expression varies depending on the nature of the gene.
Components:	The ORF clone is ion-exchange column purified and shipped in a 2D barcoded Matrix tube containing 10ug of transfection-ready, dried plasmid DNA (reconstitute with 100 ul of water).
Reconstitution Method:	<ol style="list-style-type: none">1. Centrifuge at 5,000xg for 5min.2. Carefully open the tube and add 100ul of sterile water to dissolve the DNA.3. Close the tube and incubate for 10 minutes at room temperature.4. Briefly vortex the tube and then do a quick spin (less than 5000xg) to concentrate the liquid at the bottom.5. Store the suspended plasmid at -20°C. The DNA is stable for at least one year from date of shipping when stored at -20°C.
RefSeq:	NM_001136160.1 , NP_001129632.1
RefSeq Size:	2048 bp
RefSeq ORF:	1899 bp
Locus ID:	157777
Cytogenetics:	8q13.1
Gene Summary:	Plays an important role in meiotic recombination and associated DNA double-strand break repair.[UniProtKB/Swiss-Prot Function]