

## Product datasheet for **RG227706**

### **TLE6 (NM\_001143986) Human Tagged ORF Clone**

#### **Product data:**

Product Type:	Expression Plasmids
Product Name:	TLE6 (NM_001143986) Human Tagged ORF Clone
Tag:	TurboGFP
Symbol:	TLE6
Synonyms:	GRG6; PREMBL
Mammalian Cell Selection:	Neomycin
Vector:	pCMV6-AC-GFP (PS100010)
E. coli Selection:	Ampicillin (100 ug/mL)



[View online »](#)

**ORF Nucleotide Sequence:**

>RG227706 representing NM\_001143986  
 Red=Cloning site Blue=ORF Green=Tags(s)

TTTTGTAATACGACTCACTATAGGGCGGCCGGAATTCGTCGACTGGATCCGGTACCGAGGAGATCTGCC  
 GCCGCGATCGCC

ATGCCACCAGGTCCTCCGACTGGCTCCGCGGCCCTTTGGGGAGGACAATCAGCCGGAGACCCAGCTGT  
 TCTGGGACAAGGAGCCTTGGTTTTGGCAGCAGACTCTGACCGAGCAACTCTGGCGGATTTTTGCCGGCGT  
 CCACGATGAGAAGGCAAAGCCCAGAGACAGACAGCAGGACCAGGCTGGGGCAGGAAAGCAAGGCACCA  
 GGATCCTGTGACCCAGGAACAGACCCATGTCCTGAAGATGCCTCCACCCCGAGGCCACTGAGGCCTCCT  
 CCAGTCCCCCTGAGGGTTCCAAGACAGGAACACAAGTTGGGGTGTGGTCCAGGAGCCTCCTGGAAGAGC  
 CTCTCGGTTTCTACAGTCCATATCCTGGGACCCTGAGGACTTTGAAGATGCATGGAAGAGGCCAGATGCC  
 TTGCCCGGCAGTCAAAGAGACTCGCCGTCCTGCAAACCTGGAAAAGATGCGGATCTTGGCACACGGGG  
 AGCTCGTGCTCGCCACGGCCATCAGCAGCTTACGCGGCAGTGTTCACCTGTGGCAGAAGAGGCATCAA  
 GGTGTGGAGCCTGACTGGACAGGTGGCTGAGGACAGGTTCCCTGAGAGCCACCTGCCTATACAGACCCCT  
 GGGGCCTTCTGCGCACCTGCCTGCTGTCTCAAACAGCAGGAGCCTGCTCACCGGTGGTACAACCTGG  
 CCAGCGTGAGCGTGTGGGACCTGGCGGCCCTCCCTGCATGTGAAGGAGCAGTTGCCCTGTGCAGGTCT  
 CAACTGCCAGGCCCTGGATGCCAACCTGGATGCCAACCTGGCCTTCGCCAGCTTACCAGTGGTGTGGT  
 AGGATCTGGGACCTGCGGGATCAGAGTGTGGTCAAGGGTATCCTGATGGAGTCAAGAGTA  
 TCGTGGTCAAGGGCTACAACATCTGGACTGGGGTCCGGATGCCTGTCTGCGGTGCTGGGACCAGAGGAC  
 CATCATGAAACCTCTGGAGTACCAATCAAGTCTCAGATAATGAGCCTGTCCCACAGCCCCAGGAGGAC  
 TGGGTGCTGCTGGGCATGGCCATGGCCAGCAGTGGCTGCAAAGCACAGCGGGAGCCAGCGGCACATGG  
 TGGGGCAAAAAGACAGCGTCATCCTGAGCGTCAAGTTCTCCCCCTTTGGCCAGTGGTGGCAAGCGTTGG  
 AATGGACGACTTCTTGGCGTCTACAGCATGCCGGCGGGGACAAAAGTGTTCGAGGTGCCTGAGATGTCT  
 CCAGTACGTGCTGTGACGTCTTCCAACAACCGCCTCGTTGTACAGGCTCCGGGGAGCACGCCTCCG  
 TGTACCAGATCACCTAC

ACGCGTACGCGGCCGCTCGAG – GFP Tag – GTTTAA

**Protein Sequence:**

>RG227706 representing NM\_001143986  
 Red=Cloning site Green=Tags(s)

MATRSSDWLRRPLGEDNQPETQLFWDKEPWFHDTL TEQLWRIFAGVHDEKAKPRDRQAPLGGQESKAP  
 GSCDPGTDPCPEDASTPRPPEASSPPEGSQDRNTSWGCVVQEPGRASRFLQSIWDPEDFEDAWKRPDA  
 LPGQSKRLAVPCKLEKMRILAHGELVLATAISSFTRHVFTCGRRGIKVWSLTGQVAEDRFPEHLPIQTP  
 GAFLRTCLLSSNSRSLLTGGYNLASVSVWDLAAPSLHVKEQLPCAGLNCQALDANLDANLAFASFSGVV  
 RIWDLRDQSVVRDLKGYPDGVKSIVVKGYNIWTGGPDA CLRWDQRTIMKPLEYQFKSQIMSLSHSPQED  
 WVLLGMANGQQWLQSTSGSRHMVQKDSVILSVKFSPFGQWWASVGMDDFLGVYSMPAGTKVFEVPEMS  
 PVTCCDVSSNNRLVVTGSGEHASVYQITY

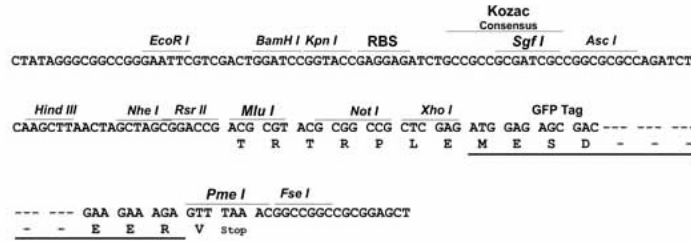
TRTRPLE – GFP Tag – V

**Restriction Sites:**

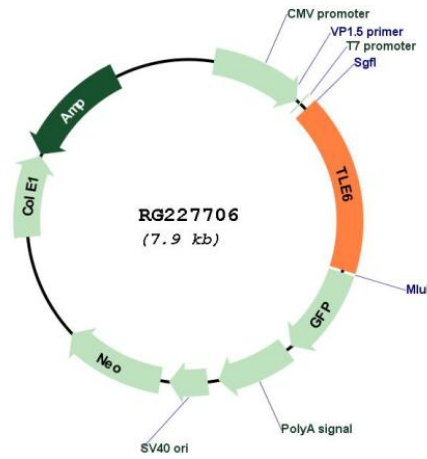
SgfI-MluI

Cloning Scheme:

Cloning sites used for ORF Shutting:



Plasmid Map:



ACCN: NM\_001143986

ORF Size: 1716 bp

<b>OTI Disclaimer:</b>	<p>Due to the inherent nature of this plasmid, standard methods to replicate additional amounts of DNA in E. coli are highly likely to result in mutations and/or rearrangements. Therefore, OriGene does not guarantee the capability to replicate this plasmid DNA. Additional amounts of DNA can be purchased from OriGene with batch-specific, full-sequence verification at a reduced cost. Please contact our customer care team at <a href="mailto:custsupport@origene.com">custsupport@origene.com</a> or by calling 301.340.3188 option 3 for pricing and delivery.</p> <p>The molecular sequence of this clone aligns with the gene accession number as a point of reference only. However, individual transcript sequences of the same gene can differ through naturally occurring variations (e.g. polymorphisms), each with its own valid existence. This clone is substantially in agreement with the reference, but a complete review of all prevailing variants is recommended prior to use. <a href="#">More info</a></p>
<b>OTI Annotation:</b>	<p>This clone was engineered to express the complete ORF with an expression tag. Expression varies depending on the nature of the gene.</p>
<b>Components:</b>	<p>The ORF clone is ion-exchange column purified and shipped in a 2D barcoded Matrix tube containing 10ug of transfection-ready, dried plasmid DNA (reconstitute with 100 ul of water).</p>
<b>Reconstitution Method:</b>	<ol style="list-style-type: none"><li>1. Centrifuge at 5,000xg for 5min.</li><li>2. Carefully open the tube and add 100ul of sterile water to dissolve the DNA.</li><li>3. Close the tube and incubate for 10 minutes at room temperature.</li><li>4. Briefly vortex the tube and then do a quick spin (less than 5000xg) to concentrate the liquid at the bottom.</li><li>5. Store the suspended plasmid at -20°C. The DNA is stable for at least one year from date of shipping when stored at -20°C.</li></ol>
<b>RefSeq:</b>	<p><a href="#">NM_001143986.1</a>, <a href="#">NP_001137458.1</a></p>
<b>RefSeq Size:</b>	<p>2033 bp</p>
<b>RefSeq ORF:</b>	<p>1719 bp</p>
<b>Locus ID:</b>	<p>79816</p>
<b>UniProt ID:</b>	<p><a href="#">Q9H808</a></p>
<b>Cytogenetics:</b>	<p>19p13.3</p>
<b>Protein Families:</b>	<p>Transcription Factors</p>
<b>Gene Summary:</b>	<p>This gene encodes a member of the Groucho/ transducin-like Enhancer of split family of transcriptional co-repressors. The encoded protein is a component of the mammalian subcortical maternal complex, which is required for preimplantation development. In mouse, knock out of this gene results in cleavage-stage embryonic arrest resulting from defective cytoplasmic F-actin meshwork formation and asymmetric cell division. In human, an allelic variant in this gene is associated with preimplantation embryonic lethality. Alternative splicing results in multiple transcript variants. [provided by RefSeq, Sep 2016]</p>