

Product datasheet for **RG227313**

CPT1B (NM_001145137) Human Tagged ORF Clone

Product data:

Product Type:	Expression Plasmids
Product Name:	CPT1B (NM_001145137) Human Tagged ORF Clone
Tag:	TurboGFP
Symbol:	CPT1B
Synonyms:	CPT1-M; CPT1M; CPTI; CPTI-M; M-CPT1; MCCPT1; MCPT1
Mammalian Cell Selection:	Neomycin
Vector:	pCMV6-AC-GFP (PS100010)
E. coli Selection:	Ampicillin (100 ug/mL)



[View online »](#)

ORF Nucleotide
Sequence:

>RG227313 representing NM_001145137
Red=Cloning site Blue=ORF Green=Tags(s)

TTTTGTAATACGACTCACTATAGGGCGGCCGGAATTCGTCGACTGGATCCGGTACCGAGGAGATCTGCC
GCCCGCATCGCC

ATGGCGGAAGCTCACCAGGCCGTGGCCTTCCAGTTACCGGTGACCCAGACGGGGTCGACTTCCGGCTCA
GTCGGGAGGCCCTGAAACACGTCTACCTGTCTGGGATCAACTCCTGGAAGAAACGCCTGATCCGCATCAA
GAATGGCATCCTCAGGGCGTGTACCCTGGCAGCCCCACCAGCTGGCTGGTCGTCATCATGGCAACAGTG
GGTTCTCTCTTCTGCAACGTGGACATCTCCTTGGGGCTGGTCAGTTGCATCCAGAGATGCCTCCCTCAGG
GGTGTGGCCCTACCAGACCCCGCAGACCCGGGCACTTCTCAGCATGGCCATCTTCTCCACGGGCGTCTG
GGTGACGGGCATCTTCTTCCGCCAAACCTGAAGCTGCTTCTGCTACCATGGGTGGATGTTTGAG
ATGCATGGCAAGACCAGCAACTGACCAGGATCTGGGCTATGTGTATCCGCCTTCTATCCAGCCGGCACC
CTATGCTCTACAGCTTCCAGACATCTCTGCCAAGCTTCTGTGCCAGGGTGTGAGCCACAATTCAGCG
GTACCTAGAGTCTGTGCGCCCTTGTGGATGATGAGGAATATTACCGCATGGAGTTGCTGGCCAAAGAA
TTCAGGACAAGACTGCCCCAGGCTGCAGAAATACCTGGTGCTCAAGTCATGGTGGGCAAGTAACATATG
TGAGTGACTGGTGGGAAGAGTACATCTACCTTCGAGGCAGGAGCCCTCTCATGGTGAACAGCAACTATTA
TGTGATGGACCTTGTGCTCATCAAGAATACAGACGTGCAGGCAGCCCGCCTGGGAAAACATCATCCACGCC
ATGATCATGTATCGCCGTAACCTGGACCGTGAAGAAATCAAGCCTGTGATGGCACTGGGCATAGTGCCTA
TGTGCTCTACCAGATGGAGGGGATGTTCAACACCACTCGGATCCCGGGCAAGGACACAGATGTGCTACA
GCACCTCTCAGACAGCCGGCAGCTGGCTGTCTACCACAAGGGACGCTTCTTCAAGCTGTGGCTCTATGAG
GGCGCCCGTCTGCTCAAGCCTCAGGATCTGGAGATGCAGTTCCAGAGGATCCTGGACGACCCCTCCCCAC
CTCAGCCTGGGGAGGAGAAGCTGGCAGCCCTCACTGCAGGAGGAAGGGTGGAGTGGGCGCAGGCACGCCA
GGCCTTCTTAGCTCTGGAAGAATAAGGCTGCCTTGGAGGCCATCGAGCGTGCCGCTTCTTCTGTCGCC
CTGGATGAGGAATCCTACTCTATGACCCGAAGATGAGGCCAGCCTCAGCCTCTATGGCAAGGCCCTGC
TACATGGCAACTGCTACAACAGGTGGTTTGACAAATCCTTCACTCTCATTTCTTCAAGAATGGCCAGTT
GGGTCTCAATGCAGAGCATGCGTGGGCAGATGCTCCCATATTGGGCACCTCTGGGAGTTTGTCTGGGC
ACAGACAGCTTCCACCTGGGCTACACGGAGACCGGGCACTGCCTGGGCAAACCGAACCTGCGCTCGCAC
CTCCTACACGGCTGCAGTGGGACATTCAAAACAGTGCCAGGCGGTATCGAGAGTTCTACCAGGTGGC
CAAGGCGTTGGCAGACGACGTGGAGTTGACTGCTTCCAGTTCTGCCCCTTGGCAAAGGCCCTCATCAAG
AAGTGGCGGACCAGCCCTGATGCCTTTGTGAGATCGCGCTGCAGCTGGCTCACTCCGGGACAGGGGTA
AGTTCTGCTGACCTATGAGGCCTCAATGACCAGAATGTTCCGGGAGGGACGACTGAGACTGTGCGTTC
CTGTACCAGCGAGTCCACAGCCTTTGTGAGGCCATGATGGAGGGGTCCCACACAAAAGCAGACCTGCGA
GATCTCTTCCAGAAGGCTGCTAAGAAGCACCAGAATATGTACCGCCTGGCCATGACCGGGGACAGGGATCG
ACAGGCACCTCTTCTGCCTTACTTGGTCTCCAAGTACCTAGGAGTCAGCTCTCCTTCTTCTGCTGAGGT
GCTCTCGGAACCTGGCGTCTCTCCACCAGCCAGATCCCCAATCCCAGATCCGCATGTTCCGACCCAGAG
CAGCACCCCAATCACCTGGGCGCTGGAGGTGGCTTTGGCCCTGTAGCAGATGATGGCTATGGAGTTTCT
ACATGATTGCAGGCGAGAACACGATCTTCTTCCACATCTCCAGCAAGTTCTCAAGCTCAGAGACGAAACGC
CCAGCGCTTTGGAACCACATCCGCAAAGCCCTGCTGGACATTGCTGATCTTTTCAAGTTCCCAAGGCC
TACAGC

ACGCGTACGCGGCCGCTCGAG - GFP Tag - GTTTAA

Protein Sequence: >RG227313 representing NM_001145137
 Red=Cloning site Green=Tags(s)

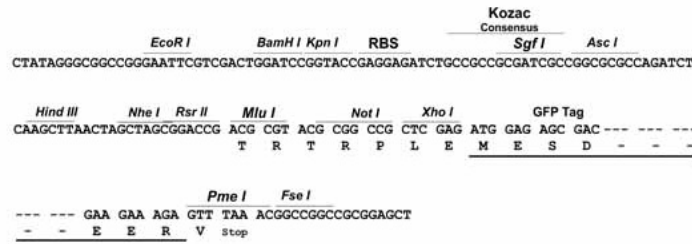
MAEAHQAVAFQFTVTPDGVDFRLSREALKHVYLSGINSWKKRLIRIKNGILRGVYPGSPTSWLVVIMATV
 GSSF CNVDISLGLVSCIQRCLPQCGPYQTPQTRALLSMAIFSTGVWVTGIFFFRQTLKLLLCYHGWMFE
 MHGKTSNLTRIWAMCIRLLSSRHPMLYSFQTSLPKLPVPRVSATIQRYLESVRPLLDDEEYRMELLAKE
 FQDKTAPRLQKYLVLKSWWASNYVSDWWEYIYLRGRSPLMVNSNYVMDLVLIKNTDVQAARLGNIIHA
 MIMYRRKLDREEIKPVMALGIVPMCSYQMEGMFNTRIPGKDTDVLQHLSDSRHVAVYHKGRFFKLWLYE
 GARLLKPQDLEMQFQRILDDPSPQPGEKLAALTAGGRVEWAQARQAFFSSGKNKAALAEIERAAFFVA
 LDEESYSYDPEDEASLSLYGKALLHGNCYNRWFDKSFTLISFKNGQLGLNAEHAWADAPIIGHLWEFVLG
 TDSFHLGYTETGHCLGKPNPALAPPTRLQWDIPKQCQAVIESSYQVAKALADDVELYCFQFLPFQGLIK
 KCRTSPDAFVQIALQLAHRDRGKFCLEYEASMRMFREGRTETVRSCTSESTAFVQAMMEGSHTKADLR
 DLFQKAAKKHQNMRYLAMTGAGIDRHLFCLYLVS KYLGVSSPFLAEVLSEPWRLSTSQIPQSQIRMFDP
 QHPNHLGAGGGFVPVADDDGYGVSYMIAGENTIFFHISSKFSSE TNAQRFGNHIRKALLDIADLFQVPKA
 YS

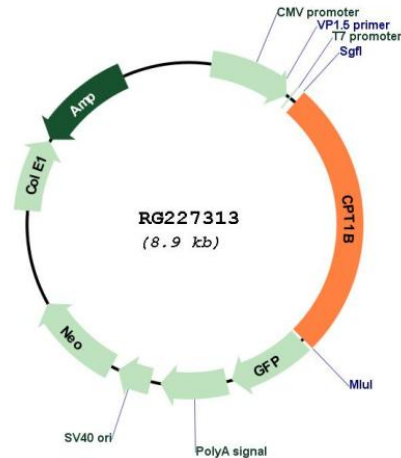
TRTRPLE - GFP Tag - V

Restriction Sites: SgfI-MluI

Cloning Scheme:

Cloning sites used for ORF Shuttling:



Plasmid Map:


ACCN: NM_001145137

ORF Size: 2316 bp

OTI Disclaimer: The molecular sequence of this clone aligns with the gene accession number as a point of reference only. However, individual transcript sequences of the same gene can differ through naturally occurring variations (e.g. polymorphisms), each with its own valid existence. This clone is substantially in agreement with the reference, but a complete review of all prevailing variants is recommended prior to use. [More info](#)

OTI Annotation: This clone was engineered to express the complete ORF with an expression tag. Expression varies depending on the nature of the gene.

Components: The ORF clone is ion-exchange column purified and shipped in a 2D barcoded Matrix tube containing 10ug of transfection-ready, dried plasmid DNA (reconstitute with 100 ul of water).

Reconstitution Method:

1. Centrifuge at 5,000xg for 5min.
2. Carefully open the tube and add 100ul of sterile water to dissolve the DNA.
3. Close the tube and incubate for 10 minutes at room temperature.
4. Briefly vortex the tube and then do a quick spin (less than 5000xg) to concentrate the liquid at the bottom.
5. Store the suspended plasmid at -20°C. The DNA is stable for at least one year from date of shipping when stored at -20°C.

RefSeq: [NM_001145137.1](#), [NP_001138609.1](#)

RefSeq Size: 2721 bp

RefSeq ORF: 2319 bp

Locus ID: 1375

UniProt ID: [Q92523](#)

Cytogenetics: 22q13.33

Protein Families:	Druggable Genome, Transmembrane
Protein Pathways:	Adipocytokine signaling pathway, Fatty acid metabolism, PPAR signaling pathway
Gene Summary:	The protein encoded by this gene, a member of the carnitine/choline acetyltransferase family, is the rate-controlling enzyme of the long-chain fatty acid beta-oxidation pathway in muscle mitochondria. This enzyme is required for the net transport of long-chain fatty acyl-CoAs from the cytoplasm into the mitochondria. Multiple transcript variants encoding different isoforms have been found for this gene, and read-through transcripts are expressed from the upstream locus that include exons from this gene. [provided by RefSeq, Jun 2009]