

Product datasheet for **RG225498**

DARC (ACKR1) (NM_001122951) Human Tagged ORF Clone

Product data:

Product Type:	Expression Plasmids
Product Name:	DARC (ACKR1) (NM_001122951) Human Tagged ORF Clone
Tag:	TurboGFP
Symbol:	DARC
Synonyms:	CCBP1; CD234; DARC; DARC/ACKR1; Dfy; FY; GPD; GpFy; WBCQ1
Mammalian Cell Selection:	Neomycin
Vector:	pCMV6-AC-GFP (PS100010)
E. coli Selection:	Ampicillin (100 ug/mL)
ORF Nucleotide Sequence:	>RG225498 representing NM_001122951 Red=Cloning site Blue=ORF Green=Tags(s)

TTTTGTAATACGACTCACTATAGGGCGGCCGGAATTCGTCGACTGGATCCGGTACCGAGGAGATCTGCC
GCC**CGATCGCC**

ATGGCCTCCTCTGGGTATGTCCTCCAGGCGGAGCTCTCCCCCTCAACTGAGAACTCAAGTCAGCTGGACT
TCGAAGATGTATGGAATTCCTATGGTGTGAATGATTCCTCCAGATGGAGACTATGGTGCCAACT
GGAAGCAGCTGCCCCCTGCCACTCCTGTAACCTGCTGGATGACTCTGCACTGCCCTTCTTCATCCTCACC
AGTGTCTGGGTATCCTAGCTAGCAGCACTGTCTCTTCATGCTTTTCAGACCTCTTCCGCTGGCAGC
TCTGCCCTGGCTGGCCTGTCTGGCACAGCTGGCTGTGGCAGTGCCTCTTCAGCATTGTGGTGGCCGT
CTTGGCCCCAGGGCTAGGTAGCACTCGCAGCTCTGCCCTGTGTAGCCTGGGCTACTGTGTCTGGTATGGC
TCAGCCTTTGCCAGGCTTTGCTGCTAGGGTGCCATGCCTCCCTGGGCCACAGACTGGGTGCAGGCCAGG
TCCCAGGCCTCACCTGGGGCTCACTGTGGGAATTTGGGGAGTGGCTGCCCTACTGACACTGCCTGTAC
CCTGGCCAGTGGTCTTCTGGTGGACTCTGCACCCTGATATACAGCACGGAGCTGAAGGCTTTGCAGGCC
ACACACACTGTAGCCTGTCTGGCATCTTTGTCTTGTGGCATTGGGTTTGTGGAGCCAAGGGGCTGA
AGAAGGCATTGGGTATGGGGCCAGGCCCTGGATGAATATCCTGTGGCCTGGTTATTTTCTGGTGGCC
TCATGGGGTGGTCTAGGACTGGATTCCTGGTGGTCAAGCTGTTGCTGTTGCAACATGTCTGGCC
CAGCAGGCTCTGGACCTGCTGTAACCTGGCAGAAGCCCTGGCAATTTGCACTGTGTGGCTACGCCCC
TGCTCCTCGCCCTATTCTGCCACCAGGCCACCCGACCCTCTTGCCCTCTCTGCCCTCCCTGAAGGATG
GTCTTCTCATCTGGACACCCCTTGAAGCAAATCC

ACGCGTACGCGGCCGCTCGAG - GFP Tag - GTTTAA



[View online »](#)

Protein Sequence: >RG225498 representing NM_001122951
 Red=Cloning site Green=Tags(s)

MASSGYVLQAELSPSTENSSQLDFEDVWNSSYGVNDSFPDGDYGANLEAAAPCHSCNLLDSDALPFFILT
 SVLGILASSTVLFMLFRPLFRWQLCPGWPVLAQLAVGSALFSIVVPVLAPGLGSTRSSALCSLGVCVWYG
 SAFAQALLLGCHASLGHRLGAGQVPGLTLGLTVGIWGAALLTLPVTLASGASGGLCTLIYSTELKALQA
 THTVACLAI FVLLPLGLFGAKGLKKALGMGPWMMNILWAWFIFWWPHGVVLGLDFLVRSKLLLLSTCLA
 QQALDLLLNLAELAILHCVATPLLLALFCHQATRTLLPSLPLPEGWSSHLDTLGSKS

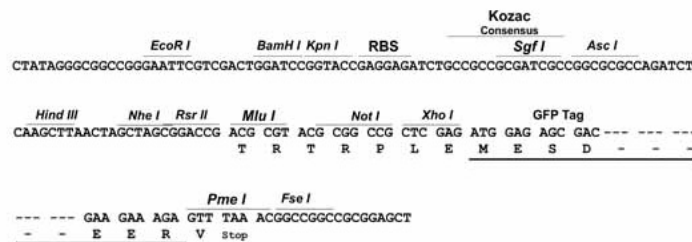
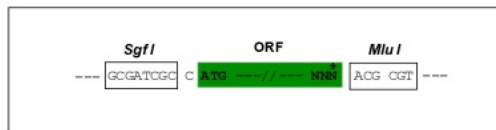
TRTRPLE - GFP Tag - V

Chromatograms: https://cdn.origene.com/chromatograms/ja2313_c04.zip

Restriction Sites: SgfI-MluI

Cloning Scheme:

Cloning sites used for ORF Shuttling:



ACCN: NM_001122951

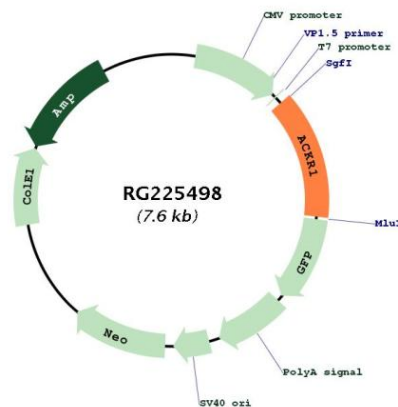
ORF Size: 1014 bp

OTI Disclaimer: Due to the inherent nature of this plasmid, standard methods to replicate additional amounts of DNA in E. coli are highly likely to result in mutations and/or rearrangements. Therefore, OriGene does not guarantee the capability to replicate this plasmid DNA. Additional amounts of DNA can be purchased from OriGene with batch-specific, full-sequence verification at a reduced cost. Please contact our customer care team at custsupport@origene.com or by calling 301.340.3188 option 3 for pricing and delivery.

The molecular sequence of this clone aligns with the gene accession number as a point of reference only. However, individual transcript sequences of the same gene can differ through naturally occurring variations (e.g. polymorphisms), each with its own valid existence. This clone is substantially in agreement with the reference, but a complete review of all prevailing variants is recommended prior to use. [More info](#)

OTI Annotation:	This clone was engineered to express the complete ORF with an expression tag. Expression varies depending on the nature of the gene.
Components:	The ORF clone is ion-exchange column purified and shipped in a 2D barcoded Matrix tube containing 10ug of transfection-ready, dried plasmid DNA (reconstitute with 100 ul of water).
Reconstitution Method:	<ol style="list-style-type: none"> 1. Centrifuge at 5,000xg for 5min. 2. Carefully open the tube and add 100ul of sterile water to dissolve the DNA. 3. Close the tube and incubate for 10 minutes at room temperature. 4. Briefly vortex the tube and then do a quick spin (less than 5000xg) to concentrate the liquid at the bottom. 5. Store the suspended plasmid at -20°C. The DNA is stable for at least one year from date of shipping when stored at -20°C.
RefSeq:	NM_001122951.3
RefSeq Size:	1106 bp
RefSeq ORF:	1017 bp
Locus ID:	2532
UniProt ID:	Q16570
Cytogenetics:	1q23.2
Protein Families:	Druggable Genome, GPCR, Transmembrane
Gene Summary:	The protein encoded by this gene is a glycosylated membrane protein and a non-specific receptor for several chemokines. The encoded protein is the receptor for the human malarial parasites Plasmodium vivax and Plasmodium knowlesi. Polymorphisms in this gene are the basis of the Duffy blood group system. Two transcript variants encoding different isoforms have been found for this gene. [provided by RefSeq, Jul 2008]

Product images:



Circular map for RG225498