

Product datasheet for **RG224760**

SETD2 (NM_014159) Human Tagged ORF Clone

Product data:

Product Type:	Expression Plasmids
Product Name:	SETD2 (NM_014159) Human Tagged ORF Clone
Tag:	TurboGFP
Symbol:	SETD2
Synonyms:	HBP231; HIF-1; HIP-1; HSPC069; HYPB; KMT3A; LLS; p231HBP; SET2
Mammalian Cell Selection:	Neomycin
Vector:	pCMV6-AC-GFP (PS100010)
E. coli Selection:	Ampicillin (100 ug/mL)
ORF Nucleotide Sequence:	>RG224760 representing NM_014159 Red=Cloning site Blue=ORF Green=Tags(s)

TTTTGTAATACGACTCACTATAGGGCGGCCGGAATTCGTCGACTGGATCCGGTACCGAGGAGATCTGCC
GCC**CGATCGCC**

ATGAAGCAGCTGCAGCCGCGCCCTCCGAAGATGGGGATTTCTACGACCCGGAGCACCCGACCCCTG
AAGAAGAAGAAAATGAGGCAAAGATTGAAAATGTGCAGAAAACAGGTTTCATCAAAGACCAATGTTCAA
AGGTGTTGCTTCTAGTCGATTTTGCCTAAAGGCACCAAAAACAAAAGTTAATTTGGAAGAACAGGGACGA
CAGAAGGTGTCATTTCAGCTTTCAGCCTTACAAGAAAACCTTGCAGAATAGGTTTCTACTGCCTGGCA
ATGAAAAGCAAAGTGATACTCCAACCCCTCCAGCTGTACCTCTTCAGGTAGACTCGACTCCTAAAATGAA
AATGAAAATTGGTGATACCTTATCTACTGCAGAAGAATCTTCCCACCAAAGTCAAGGGTGAATTGGGC
AAAATTCATTTAAGAAACATCTGCTTCATGTAACATCCAGGCCACTGCTGGCTACTACCACAGCAGTAG
CATCTCCACTACTCATGCAGCACCATTACCAGCAGTGATAGCAGAATCAACAACCTGTAGACTCACCGCC
CTCATCTCCGCTCCACCGCCTCCACCTGCCAAAGCCACAACACTCTCATCACCAGCACCAGTAACAGAG
CCAGTGGCCTTGCCACATACCCAATAACAGTTCTAATGGCAGCACCAGTACCCTTACCAGTAGATGTAG
CAGTTAGATCTCTGAAAGAACCACCAATTATAATTGTACCAGAATCTTTAGAAGCAGATACTAAGCAGGA
CACTATATCTAATAGTTTAGAAGAACACGTAACCTAAAATTTGAATGAGCAAGCAGATATTTCTCAAAA
AAAGAAGATTCCCATATTGGGAAGGATGAAGAAATTCAGATAGTCTAAGATTAGTCTGAGCTGTAAAA
AAACAGGTTCTAAGAAGAAATCCTCACAATCTGAAGGCATCTTTCTGGTTCAGAATCTGATGAAGATTCT
TGTACGGACTTCTCAAGTCAAAGATCACATGATTTAAAAATTTTTCAGCAAGCATTGAAAAGGAAAGAGAT
TTTAAAAAGAGCTCAGCACCTTTAAAAAGTGAGGATCTAGGGAAACCTTACAGTCTAAAACAGACAGAG
ATGATAAATATTTTAGCTATTCAAAACCTTGAAGAGATACTCGGTATGTATCTTCCCGATGTAGATCAGA
AAGAGAGCGACGGCGGAGCAGATCTCACTCTAGGTCTGAGAGAGGCTCTAGAACTAATTTATCCTATTCC
AGGTCAGAACGATCTCATTATTGACTCTGATCGCTACCATAGGAGCTCCCCTTATCGAGAGAGGA
CGCGCTATTCTCGCCATACACAGATAACAGAGCAGGAGAGTCTGACTCAGAAGAAGAGTATAAGAA
GACATACTCAAGGCGTACCTCATCTCCTCTTCTTACAGAGACCTAAGGACATCATCTATTCTAAA



[View online »](#)

TCTGATCGGGACTGTAAAACGAGACCTCTTACTTAGAGATGGAAAGAAGAGGCAAGTATTCTTCAAAC
TAGAAAGAGAATCTAAAAGGACTTCAGAAAATGAAGCAATTAAGAAGTGTGTTCTCCCCCTAATGAACT
GGGATTCGACGAGGGTCATCATATTCTAAGCATGACAGTAGTGCTTCCCCTTATAAATCTACCTTTCA
AAACCTATACCCAAGTCTGATAAATTTAAAAATCTTTCTGTTGTACAGAATTAATGAAGAAATCAAAC
AGTCTCATTCTTTAGTTTACAGACACCTTGTTCAAAAGGTAGTGAATTAAGAATGATTAATAAAAAATCC
TGAAAGAGAAAAGGCTGGGTCTCCAGCTCCATCAAATCGATTAATGATTCACCTACTTTAAAAAGCTA
GATGAATTCCTATTTTTAAGTCCGAATTTATAACACATGATAGCCATGATAGTATTAAGGAATTAGACT
CTTTATCTAAAGTGAAGAATGATCAATTAAGAAGTTTTGTCCCATAGAATTAATATAAAATGGATCTCC
TGGGCGAGAATCTGATTTGGCAACATTTGCACTTCTAAAACGATGCTGTTTTAATGACTTCTGATGAT
AGTGTGACTGGATCGGAATTATCCCCTTTGGTCAAAGCATGCATGCTTTCATCAAATGGATTTTCAAGATA
TTAGTAGTGCAGAAAGAAAAGACTTGGATGATACCTGCATGCTGCATAAGAAGTCAGAAAGCCCATTTAG
AGAAACAGAACCTCTGGTGTACCACACCAAGATAAACTCATGTCTATGCCAGTTATGACTGTGGATTAT
TCCAAAACAGTAGTTAAGAACCAGTTGATACGAGGGTTTCTGTGCAAAACCAAGATTCAGACATAT
ACTGTACTTTGAACGATAGCAACCCTTCTTTGTGTAACCTGAAGCTGAAAAATTTGAGCCTTCAGTTAT
GAAGATTTCTTCAAATAGCTTTTGAATGTGCATTTGGAATCAAACAGTTATATGTGATAGTAGAAAT
TTGACAGATCACTCAAATTTGCATGTGAAGAATAAAGCAGAGCATCGGTAGCACTAGTTCAGCTTCTG
TTAATCATTTTGATGATTTATATCAACCTATTGGGAGTTCAGGTATTGCTTCATCTCTTCAGAGTCTTCC
ACCAGGAATAAAGGTGGACAGTCTAACTCTTTGAAATGCGGAGAGAACACATCTCCAGTTCTGGATGCA
GTGCTAAAGAGTAAAAAAGTTTCAAGTTTTTAAAGCATGCAGGGAAAGAAAACAATAGTAGAAGTAGGTA
GTGACCTTCTGATTCAGGAAAGGGATTTGCTTCCAGGGAGAACAGGCGTAATAATGGGTTATCTGGGAA
ATGTTTGAAGAGGCTCAAGAAGAAGGGAAATCCATATTGCTGAAAGAAGAGGAAGACCAGAAATCTCT
TTAGATGAAAGAGGAGAAGGAGGACATGTCATACTTCTGATGACTCAGAAGTTGATTTTCTTCTTGTG
ATTTGAATTTAACCATGGAAGACAGTGTGGTAACTTATGCATTAAGTGTGACAGATGGTCAATGTC
CCCAGAAATTGTGTCTACAGTTTCAAGATTATCTGGCTTCTGAAAGTTCAAATGATGAAAGTGTGAT
TCAGAAGATACAGATTCCGATGATAGCAGTATTCCAAGAAACCGTCTCCAGTCTGTTGTGGTTGTGCCAA
AGAATTCTACTTTGCCATGGAAGAAAACAGTCTTGTCTTCTCGGAGCAGTCAAAGTTATAGACACTA
TTCTGACCATTGGGAAGATGAGAGATTGGAGTCAAGGAGACATTTGTATGAGGAAAAATTTGAAAGTATA
GCAAGTAAAGCCTGTCTCAAACGATAAGTTTTTCTTCAAAAGAACAGAGAAGAATCCGGAATTT
CTTTTACACAGTCCAGTAGAAAACAAATAGATAATCGCCTGCCTGAACTTCTCATCCTCAGAGTGTGG
GGTTGATAGTACAAGTCATACAGATGTGAAATCTGACCCTCTGGGTCAACCAATTCAGAGGAAACCGTG
AAAGCCAAAATACCTTCTAGGCAGCAAGAAGAGCTGCCAATTTATCTTCTGATTTTGAAGATGTCCCAA
ATAAGTCTTGGCAACAGACCCTTCCAAAACAGGCCAGATAGTAGACTGGGAAAAACAGAAATTGAGTTT
TTCTTCTCTTGTGAGATACCACATGTGGATGGCTTGCATCATCAGAAGAGCTCAGAAACTTAGGTTGG
GACTTCTCTCAAGAAAAGCCTTCTACCAGTATCAGCAACCTGACAGTAGCTATGGAGCTTGTGGTGGAC
ACAAGTATCAGCAAAATGCAGAACAGTATGGTGGGACACGTGATTAAGTGGCAAGGCAATGGTTACTGGGA
TCCAAGATCAGGTAGACCTCTGGAACCTGGGTTGTGTATGATCGAACTCAAGGACAAGTACCAGATTCC
CTAACAGATGATCGTGAAGAAGAGGAGAATTGGGATCAACAGGATGGATCCCATTTTTAGACCAGTCCG
ATAAATTTCTTCTATCCCTTCAAGAAAGCAAGGGGTCAAGTCAAGCACCTGAAATTAAGCAGCAATCCAT
TAAGGACACTTTAGCTGTGAATGAAAAGAAAGATTTTTCAAAAACCTTAGAAAAAATGATATCAAAGAT
AGAGGGCCTCTTAAAAAAGGAGGCAGGAAATAGAGAGTATTCTGAAAGTGTGGTGGAGCTTCAAGGACA
GAAAGAAAGTTAGAGTGGAGGTAGAGCAGGAGAGACATCAGTGCCCCAGGTTCAAGCACTGGTTGGGCC
CTCCTGTGTATGGATGACTTCAAGGACCCACAGCGATGGAAGGAATGTGCCAAGCAAGGAAAAATGCCA
TGTTACTTTGATCTTATTGAAGAAAAATGTTTTAATTAACAGAAAAGAAAGAAATAAATCTCATCGAGATA
TTAAGCGAATGCAGTGTGAGTGTACACCTCTTCTAAAGATGAAAGAGCTCAAGGTGAAATAGCATGTGG
GGAAGATTGTCTAATCGTCTTCTCATGATTGAATGTTCTTCTCGGTGTCCAAATGGGGATTATTGTTCC
AATAGACGGTTTCAGAGAAAACAGCATGCAGATGTGGAAGTCATACTCACAGAAAAGAAAGGCTGGGGCT
TGAGAGCTGCCAAAGACCTTCTTGAACACCTTTGCTCCTAGAATATTGTGGAGAGGTACTCGATCATAA
AGAGTTTAAAGCTCGAGTGAAGGAGTATGCACGAAACAAAACATCCATTACTATTTTATGGCCCTGAAG
AATGATGAGATAATAGATGCCACTCAAAAAGGAAATTGCTCTCGTTTTCATGAATCACAGCTGTGAACCAA
ATTGTGAAACCCAAAAATGGACTGTGAACGGACAACCTGAGGGTTGGGTTTTTACCACAAAACCTGTTTCC
TTCAGGCTCAGAGTTAACGTTTACTATACGTTCCAGAGATATGGAAAAGAGCCAGAAATGTTTCTGC
GGATCAGCCAATTGCCGGGTTACTGGGAGGAGAAAACAGAGTCAGCATCAGAGCAGCAGGAGGGAAAA

TGAAGAAGGAACGATCTCGTAAGAAGGATTCAGTGGATGGAGAGCTAGAAGCTCTGATGGAAAATGGTGA
GGGTCTCTGATAAAAACCAAGTGTCTCAGCTTATCCCGGCTAATGGTTAGAATTGAACTTTGGAGCAG
AACTTACCTGTCTGGAACATACAGAACACACACTCACAGTCTGCCTGAAGTCTTTCTGGAACGTC
ATGGGCTGTCTTTGTTGTGGATCTGGATGGCAGAGCTAGGTGACGGCCGGGAAAGTAACCAGAAGCTTCA
GGAAGAGATTATAAGACTTTGGAACACTTGCCATTCTACTAAAAATATGTTGGAGGAAAGCAAAGTA
CTTCCAATTATTCAACGCTGGTCTCAGACTAAGACTGCTGTCCCTCCGTTGAGTGAAGGAGATGGGTATT
CTAGTGAGAATACATCGCGTGTCTATACACCACCTCAACACACCTGATCCTTCCACCAAGCTGAGCACAGA
AGCTGACACAGACACTCCAAGAACTAATGTTTCGCAGACTGAAAATTATAAGTGAAAATAGCATGGAC
AGTGCAATCTCTGATGCAACCAAGTGGAGCTAGAAGGCAAGGATGGCAAAGAGGATCTTGATCAATTAGAAA
ATGTCCCTGTAGAGGAAGAGGAAGAATTGCAGTCACAACAGCTACTCCACAACAGCTGCCTGAATGCAA
AGTTGATAGTGAAACCAACATAGAAGCTAGTAAGCTACCTACATCTGAACCAGAAGCTGACGCTGAAATA
GAGCCAAAGAGAGCAACGGCACAAAACCTAGAAGAACCTATTAATGAAGAAACACCATCCAAGATGAAG
AGGAGGGTGTGTCTGATGTGGAGAGTGAAGGAGCCAAGAACAGCCAGATAAACAGTGGATATAAGTGA
TTTGGCCACCAAACCTCTGGACAGTTGGAAGACCTAAAGGAGGTATATCGAATCCAAAGAAAAGTCAA
ACTGAAAAGGAAAACACAACAACCTGAACGAGGAAGGGATGCTGTTGGCTTCAGAGATCAAACACCTGCC
CGAAGACTCCTAATAGGTCAAGAGAGAGAGACCCAGACAAGCAAACCTCAAATAAAGAGAAAAGGAAACG
AAGAAGCTCCCTCTCACCACCCTCTTCTGCCTATGAGCGGGGAACAAAAGGCCAGATGACAGATATGAT
ACACCAACTTCTAAAAGAAAGTACGAATTAAGACCCGAATAAACTTTCTACAGAGGAACGCCGGAAGT
TGTTTGAGCAAGAGGTGGCTCAACGGGAGGCTCAGAAAACAACAGCAACAGATGCAGAACCTGGGAATGAC
ATCACCCTGCCCCTATGACTCTCTTGGTTAATGCCCCGCATCATCCCTTTGCTGGTACCCACCAGGT
TATCCCATGCAGGCCTATGTGGATCCCAGCAACCTAATGCTGGAAGGTGCTCCTGCCACACCCAGCA
TGGACCCAGTGTGTTCTCTGCTCCTTATGATCATGCTCAGCCCTTGGTGGGACATTCTACAGAACCCCT
TTCTGCCCTCCACCAGTACCAGTGGTCCACATGTGGCAGCTCCTGTGGAAGTTCCAGTCCCAGTAT
GTGGCCACAGAGTGTGGTGTAGTACACCAAGACTCCAGCGTTGCTGTCTTGCCAGTGCCGGCCCCGGCC
CAGTTCAGGGACAGAATTATAGTGTGGGATTCAAACCAACAGTCTGTGAGTGTACAGCAGCAGTACTC
TCTGCACAGTCTCAAGCAACCATATATTATCAAGGACAGACATGTCCAACAGTCTATGGTGTGACATCA
CCTTATTCACAGACAACCTCCACCAATTGTACAGAGTTATGCCAGCCAAGTCTTCAGTATATCCAGGGGC
AACAGATTTTACAGCTCATCCACAAGGAGTGGTGGTACAGCCAGCCGACAGCAGTACTACAATAGTTGC
ACCAGGGCAGCCTCAGCCCTTGACCCATCTGAAATGGTGTGACAAATAATCTCTTGGATCTGCCGCC
CCCTCTCCTCCCAACCAAAAACCATTGTCTTACCTCCCAACTGGAAGACAGCTCGAGATCCAGAAGGGA
AGATTTTACTACCATGTGATCACAAGCAGACTCAGTGGGATCCTCCTACTTGGGAAAGCCCAGGAGA
TGATGCCAGCCTTGAGCATGAAGCTGAGATGGACCTGGGAACTCCAACATATGATGAAAACCCCATGAAG
GCCTCGAAAAAGCCCAAGACAGCAGAAGCAGACACCTCCAGTGAAGTGAAGAAAAGCAAAGAAGTAT
TCAGAAAAGAGATGTCCAGTTCATCGTCCAGTGCCTGAACCTTACCGAAAACCTGACTGCAAAGTGGG
AAGAATTACCACAACCTGAAGACTTTAAACATCTGGCTCGCAAGCTGACTCACGGTGTATGAATAAGGAG
CTGAAGTACTGTAAAGTCTGAGGACCTGGAGTGAATGAGAATGTGAAACACAAAACCAAGGAGTACA
TTAAGAAGTACATGCAGAAGTTTGGGGCTGTTTACAAACCAAGAGGACACTGAATTAGAG

ACGCGTACGCGGCCGCTCGAG - GFP Tag - GTTTAA

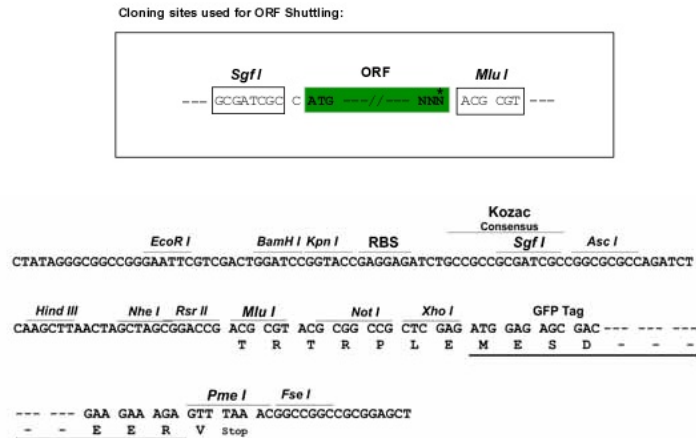
Protein Sequence: >RG224760 representing NM_014159
 Red=Cloning site Green=Tags(s)

```

MKQLQPQPPPKMGDFYDPEHPTPEEEENEAKIENVQKTGFIKGPMPKGVASSRFLPKGKTKVNLEEQGR
QKVSFSFSLTKKTLQNRFLTALGNEKQSDTPNPPAVPLQVDSTPKMKMEIGDTLSTAEESPPKSRVELG
KIHFKKHLLHVTSRPLLATTTAVASPPTHAAPLPAVIAESTTVDSPSSPPPPPPPAQATLSSPAPVTE
PVALPHTPTITVLMAPVPLPVDVAVRSLKEPPIIIVPESLEADTKQDTISNSLEEHTVQILNEQADISSK
KEDSHIGKDEEIPDSSKISLCKKTGSKKKSSQSEGI FLGSEDEDSVRTSSSQRSKDLKFSASIEKERD
FKKSSAPLKSEDLGKPSRSKTDKDYFSYSKLERDTRYVSSRCRSEERRRRSRSHRSRERSRNTLSYS
RSERSHYDSDRRYHRSSPYRERTRYSRPYTDNRARESSDSEEEYKKTYSRRTSSHSSSYRDLRTSSYSK
SDRDCKTETSYLEMERRGKYSSKLERESKRTSENEAIKRCCSPPNELGFRGSSYSKHDSSASRYKSTLS
KPIPKSDKFKNSFCCTELNEEIKQSHSFLQTPCSKGSSELRMINKNPEREKAGSPAPSNRLNDSPTLKKL
DELP IFKSEFITHSDHSIKELDSL SKVKNDQLRSFCPIELNINGSPGAESDLATFCTSKTDAVLMSTDD
SVTGSEL SPLVKACMLSSNGFQNI SRCKEKDLDDTCMLHKKSESPFRETEPLVSPHQDKLMSMPVMTVDY
SKTVVKEPVDTRVSCCKTKDSDIYCTLNDSNPCLCNSEAENIEPSVMKISSNSFMNVHLESKPVICDSRN
LTDHSKFACEEYKQSIGSTSSASVNHFDLYQPIGSSGIIASSLQSLPPGIKVDLSLTLKCGENTSPVLDA
VLKSKKSSSEFLKHAGKETIVEVGSGLPDSGKGFASRENRNNGLSGKCLQEAQEEGNSILPERRGRPEIS
LDERGEGGHVHTSDDSEVVFSSCDLNLTMEDSDGVTYALKCDSSGHAPEIVSTVHEDYSGSSESSNDES
SEDTDSDSSIPRNLQSVVVVPKNSTLPMEEETPCSSRSRQSYRHYSDHWEDERLESRRHL YEEKFESI
ASKACPQTDKFFLHKGTEKNPEISFTQSSRKQIDNRLPELSHPQSDGVDSTSHTDVKSDPLGHPNSEETV
KAKIPSRQQEELPIYSSDFEDVPNKSWQQTTFQNRPD SRLGKTELSFSSSCEIPHVDGLHSSEELRNLGW
DFSQEKPTTTYQQPDSSYGACGGHKYQQNAEQYGGTRDYWQNGYWDPRSGRPPGTGVVYDRTQGGVQVPS
LTDREEEENWDQDGGSHFSDQSDKFLLSLQKDKGVSQAPEISSNSIKDTLAVNEKKDFSKNLEKNDIKD
RGPLKRRRQEIESDSESDGELQDRKKVRVEVEQGETSVPPGSALVGPSCVMDDFRDPQRWKECAKQGKMP
CYFDLIEENVYLTERKKNKSHRDIKRMQCECTPLSKDERAQGEIACGEDCLNRLLMIECSSRCPNGDYCS
NRRFQRKHADVEVILTEKKGWGLRAAKDLPSNTFVLEYCGEVLDHKEFKARVKEYARNKNIHYFMALK
NDEI IDATQKGNCSRFMNHSCPCETQKWTVNGQLRVGFFTTKLVPSGSELTFDYQFQRYGKEAQKFC
GSANCRGYLGGENRVSIRAAGGKMKKERSRKKDSVDGELEALMENGELSDKNQVLSLRLMVRITLEQ
KLTCLLEL IQNTHSQSCLKSF LERHGLSLLWIWMAELGDGRESNQKLQEEI IKTLEHLPIPTKNMLESKV
LP I IQRWSQTKTAVPPLSEGDGYSSENTSRAHTPLNTPDPSTKLSTEADTDTPKKLMFRRLKIISENSMD
SAISDATSELEGGDKEDLDQLENVPVEEEELQSQQLLPQQLPECKVDSETNIEASKLPTSEPEADAEI
EPKESNGTKLEEPINEETPSQDEEEGVSDVESERSQE QPDKTVDISDLATKLLDSWKDLKEYYRIPKKSQ
TEKENTTTTERGRDAVGRDQTPAPKTPNRSRERDPDKQTQNKERKRSSSLSPSSAYERGTRKRPDDRYD
TPTSKKKVRIKDRNKLSTEERRKLFQEVAQREAAKQQQQMQLGMTSPLPYDSLGYNAPHHFAGYPPG
YPMQAYVDPSPNAGKVLLPTPSMDPVCSPAPYDHAQPLVGHSTEPLSAPPPVVPVHVAAPVEVSSQY
VAQSDGVVHQDSSVAVLPVPAPGPVQGNYSVWDSNQQS SVSQQYSPAQSQATIIYYGGQTCPTVYGVTS
PYSQTPPIVQSYAQPSLQYIQGQQIFTAHPQGVVVPAAAVTTIVAPGQPQLQPSSEMVVTTNLLDLPP
PSPPKPKTIVLPPNWK TARDPEGKIYYHYVITRQTQWDPPTWESP GDASLEHEAEMDLGTPTYDENPMK
ASKKPKTAEADTSSELAKKSKEVFRKEMSQFIVQCLNPYRKPDCKVGRITTTEDFKHLARKLTHGVMNKE
LK YCKNPEDLECNENVKHKTKKEYIKKYMQKF GAVYKPKEDTELE
  
```

TRTRPLE - GFP Tag - V

Restriction Sites: SgfI-MluI

Cloning Scheme:


ACCN: NM_014159

ORF Size: 7692 bp

OTI Disclaimer: The molecular sequence of this clone aligns with the gene accession number as a point of reference only. However, individual transcript sequences of the same gene can differ through naturally occurring variations (e.g. polymorphisms), each with its own valid existence. This clone is substantially in agreement with the reference, but a complete review of all prevailing variants is recommended prior to use. [More info](#)

OTI Annotation: This clone was engineered to express the complete ORF with an expression tag. Expression varies depending on the nature of the gene.

Components: The ORF clone is ion-exchange column purified and shipped in a 2D barcoded Matrix tube containing 10ug of transfection-ready, dried plasmid DNA (reconstitute with 100 ul of water).

Reconstitution Method:

1. Centrifuge at 5,000xg for 5min.
2. Carefully open the tube and add 100ul of sterile water to dissolve the DNA.
3. Close the tube and incubate for 10 minutes at room temperature.
4. Briefly vortex the tube and then do a quick spin (less than 5000xg) to concentrate the liquid at the bottom.
5. Store the suspended plasmid at -20°C. The DNA is stable for at least one year from date of shipping when stored at -20°C.

RefSeq: [NM_014159.6](#), [NP_054878.5](#)

RefSeq Size: 8452 bp

RefSeq ORF: 7695 bp

Locus ID: 29072

UniProt ID: [Q9BYW2](#)

Cytogenetics: 3p21.31

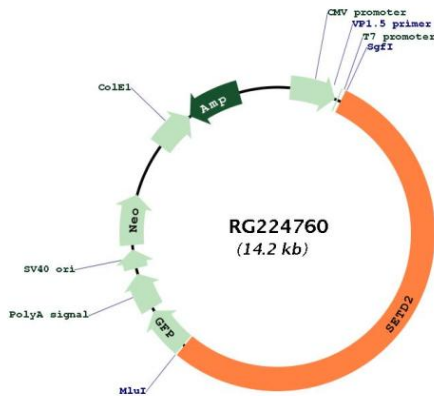
Domains: WW, SET, PostSET, AWS

Protein Families: Druggable Genome

Protein Pathways: Lysine degradation

Gene Summary: Huntington's disease (HD), a neurodegenerative disorder characterized by loss of striatal neurons, is caused by an expansion of a polyglutamine tract in the HD protein huntingtin. This gene encodes a protein belonging to a class of huntingtin interacting proteins characterized by WW motifs. This protein is a histone methyltransferase that is specific for lysine-36 of histone H3, and methylation of this residue is associated with active chromatin. This protein also contains a novel transcriptional activation domain and has been found associated with hyperphosphorylated RNA polymerase II. [provided by RefSeq, Aug 2008]

Product images:



Circular map for RG224760