

Product datasheet for **RG224610**

Glutamate receptor ionotropic, NMDA 2D (GRIN2D) (NM_000836) Human Tagged ORF Clone

Product data:

Product Type:	Expression Plasmids
Product Name:	Glutamate receptor ionotropic, NMDA 2D (GRIN2D) (NM_000836) Human Tagged ORF Clone
Tag:	TurboGFP
Symbol:	Glutamate receptor ionotropic, NMDA 2D
Synonyms:	DEE46; EB11; EIEE46; GluN2D; NMDAR2D; NR2D
Mammalian Cell Selection:	Neomycin
Vector:	pCMV6-AC-GFP (PS100010)
E. coli Selection:	Ampicillin (100 ug/mL)
ORF Nucleotide Sequence:	>RG224610 representing NM_000836 Red=Cloning site Blue=ORF Green=Tags(s)

TTTTGTAATACGACTCACTATAGGGCGGCCGGAATTCGTCGACTGGATCCGGTACCGAGGAGATCTGCC
GCC**CGATCGCC**

ATGCGCGGCGCCGGTGGCCCCGCGGCCCTCGGGCCCCGCTAAGATGCTGCTGCTGCTGGCGCTGGCCT
GCGCCAGCCCGTCCCGGAGGAGCGCCGGGGCCGGGCGGGCCGGTGGGCCCGCGCGGCCCTCGGCGG
GGCGCGCCGCTCAACGTGGCGCTCGTGTCTCGGGCCCGCTACGCGCCGAGCGGCACGCCTGGC
CCGGCCGTGGCGCGCCGGTGCAGCCCGGCCCTAGACGTGCGGCCGTGGCGTGGTGTCAACGGCT
CGGACCCGCGCAGCCTCGTGTGCAGCTCTGCGACCTGTGTGCGGGTTGCGCGTGCACGGCGTGGTCTT
CGAAGACGACTCGCGCGCCCGCGCTGCGCCCATCCTCGACTTCTGTGCGCGCAGACCTCGCTGCC
ATCGTGGCCGTGCACGGCGCGCCGCGCTCGTGTACGCCCAAGGAGAAGGGCTCCACCTTCTGCAGC
TGGGCTCTTCCACCGAGCAACAGCTTCAAGTATCTTTGAGGTGCTGGAGGAGTATGACTGGACGTCCTT
TGTAGCCGTGACCACTCGTGCCCTGGCCACCGGGCTTCTGTCTTACATTGAGGTGCTGACTGACGGT
AGTCTGGTGGGCTGGGAGCACCGCGAGCGCTGACGCTGGACCTGGGGCGGGCAGGCCGTGCTCAGTG
CCCAGCTCCGAGTGTACGCGCGAGATCCGCCTGCTTCTGCGCCGAGAGGAGGCCGAGCCCGTGT
CCGCGCAGCTGAGGAGGCTGGCCTCACTGGATCTGGTACGTCTGGTTCATGGTGGGGCCCCAGCTGGCT
GGAGGCGGGGGCTTGGGGCCCCCTGGTGGCCCCCTTCTGCCAGGAGGCCCCCCCTGCCTGCCGGGC
TGTTTGACAGTGCCTCGCTGGCTGGCGGGATGACCTGGCTCGGGGAGTGGCAGCTGGCGTGGCCGTAGT
GGCCAGAGGTGCCAGGCCCTGTGCGTGATTATGGTTTCTTCTGAGCTCGGCCACGACTGTGCGGCC
CAGAACCACCCACCGCGCGAGAGTCTGCATAGGTAATCATGAACATCACGTGGGATAACCGGGATT
ACTCCTCAATGAGGACGGCTTCTAGTGAACCCCTCCCTGGTGGTCACTCCCTCACCAGAGACAGGAC
GTGGGAGTGGTGGCAGCTGGGAGCAGCAGACGCTCCGCTCAAGTACCCGCTGTGGTCCCGCTATGGT
CGTTCCTGCAGCAGTGGACGACACGACACCTCACGGTGGCCACGCTGGAGGAAAGGCCGTTTGTCA
TCGTGGAGCCTGCAGACCCTATCAGCGCACCTGCATCCGAGACTCCGTCCTGCCGGAGCCAGCTCAA
CCGAACCCACAGCCCTCACCGGATGCCCCCCGCCGAAAAGCGCTGCTGCAAGGGTTTCTGCATCGAC



[View online »](#)

ATTCTGAAGCGGCTGGCGCATACCATCGGCTTCAGCTACGACCTCTACCTGGTCACCAATGGCAAGCACG
 GAAAGAAGATCGATGGCGTCTGGAACGGCATGATCGGGGAGGTGTTCTACCAGCGCGCAGACATGGCCAT
 CGGCTCCCTCACCATCAACGAGGAGCGCTCCGAGATCGTGGACTTCTCCGTCCCCCTTCGTGGAGACCGGC
 ATCAGCGTCATGGTGGCGCGCAGCAATGGCAGGTGTCCCCCTCGGCCTTCTCGAGCCCTACAGCCCCG
 CCGTGTGGGTGATGATGTTTCGTCATGTGCCTACTGTGGTCGCGTCACTGTTTTTTCATCTTCGAGTACCT
 CAGTCCGTGTTGGTTACAACCGCAGCCTGGCCACGGGCAAGCGCCCTGGCGGTTCAACCTTACCATTGGG
 AAATCCATCTGGTGTCTGGGCCCTGGTGTCAATAATTCGGTGCCCGTGGAGAACCCCGGGGAACCA
 CCAGCAAATCATGGTGCTGGTGTGGCCCTTCTCGCCGTCATCTTCTCGCCAGCTACACAGCCAACT
 GGCCGCTTCATGATCCAGGAGGAGTACGTGGATACTGTGTCTGGGCTCAGTGACCAGCAAGTTCAGAGG
 CCCCAGGAGCAGTACCCGCCCTGAAGTTTGGGACCGTGCCAACGGCTCCACGGAGAAGAACATCCGCA
 GCAACTATCCCGACATGCACAGCTACATGGTGCCTACAACCAGCCCCGCGTAGAGGAAGCGCTCACTCA
 GCTCAAGGCAGGAAGCTGGACGCCTTCTACGATGCTGCAGTGTCAATTACATGGCCCGCAAGGAC
 GAGGGTGCAGCTTGTACCATCGGCTCCGGCAAGGTCTTCCGACGACAGGCTATGGCATCGCCCTGC
 ACAAGGGCTCCCCTGGAAGCGGCCATCGACCTGGCGTGTCTGCAGTTCCTGGGGGATGATGAGATCGA
 GATGCTGGAGCGGCTGTGGCTCTCTGGGATCTGCCACAATGACAAAATCGAGGTGATGAGCAGCAAGCTG
 GACATCGACAACATGGCGGGCGTCTTACATGCTCCTGGTGGCCATGGGCTGTCCCTGCTGGTCTTCG
 CCTGGGAGCACCTGGTGTACTGGCGCTGCGGCACTGCCTGGGGCCACCACCCGATGGACTTCCTGCT
 GGCTTCTCCAGGGGCATGTACAGCTGCTGCAGCGCTGAGGCCGCCACCAGCCCGCAAGCCCCCGCCG
 CCGCCACAGCCCCTGCCAGCCCCGCGTACCCCGCGCGGGGCGGCTCCCGGGCCCGCACCTTTCGTGC
 CCCGCGAGCGCGCTCAGTGGACCGTGGCGCCGACCAAGGGCGCGGGGCGCCGGGGGGCGGGGCT
 GGCCGACGGCTTCCACCGCTACTACGGCCCATCGAGCCGAGGGCTAGGCCTCGGCTGGCGAAGCG
 CGCGGGCACCGGGGGCGAGCCGGGCGCCGCTGTCCCCGCGGCGCTCAGCCCCGAGAAAGCCG
 CGGCCTCTATTTGCCATCGTACGCGACAAGGAGCCAGCCGAGCCCCCGCGGCGCTTCCCCGGCTT
 CCGTCCGCGCCCGCGCCCGCGCGCCGCGGCAACCGCGTCCGGCCGCACTTGCCTGTTGGCCTTC
 GAGGACGAGAGCCCGCCGCGCCGCGCGTGGCCGCGCTCGGACCCGAGAGCCAACCCCTGCTGGGGC
 CAGGCGCGGGCGCGCGGGGGCACGGGGGGCGCAGGCGGAGGAGCCCGGCCGCTCCGCCCCGCTGCTG
 CGCCGCGCGCCCGCTGACCTCGATCTCGAGCCGTCGCGTCCGACTCGGAGGACTCGGAGAGC
 CTGGGCGGCGCTCGTGGGCGGCTGGATCCCTGGTGGTTCGCCGACTTCCCTTACCCGTATGCCGAGC
 GCCTCGGGCCGCCCGCCGCGCTACTGGTCGGTCGACAAGCTCGGGGCTGGCGCGCCGGGAGCTGGGA
 CTACCTGCCCGCGCAGCGGTCCGCGCCCTGGCACTGTGGCACTGCGCCAGCCTGGAGCTGCTGCCG
 CGCCGCGCCATCTCAGTGTCTGCACGATGGCCTGGACGGCGGCTGGTGGGCGCACCCGCTCCACCT
 GGGCCCGCGGGCCCTGCCCCGACGCGGGCCGCTGCGGGTCCCGCGGTGCAACCCGACCCGCCCGG
 GGCTCGCACCGCAGCCCGCGCTGCCGCGCCACCACCACAGGCACCGGCGCGCCGCTGGGGGCTGG
 GACCTCCCGCGCCCGCGCCACCTCGCGCTCGTTCGAGGACCTCAGCTCGTCCCTCGCGCCGCCCTG
 CGCGCAGGCTTACCGGGCCCTCCCGCCACGCTCGCAGGTGTCCGACGCGCGCACTGGGGGCGCCGCT
 GCCACAGCTTCCACCGGAGACACCGGGGCGGGACCTGGGCACCCGAGGGGCTCGGCGCACTTCTCT
 AGCCTCGAGTCCGAGGTA

ACGCGTACGCGGCGGCTCGAG - GFP Tag - GTTTAA

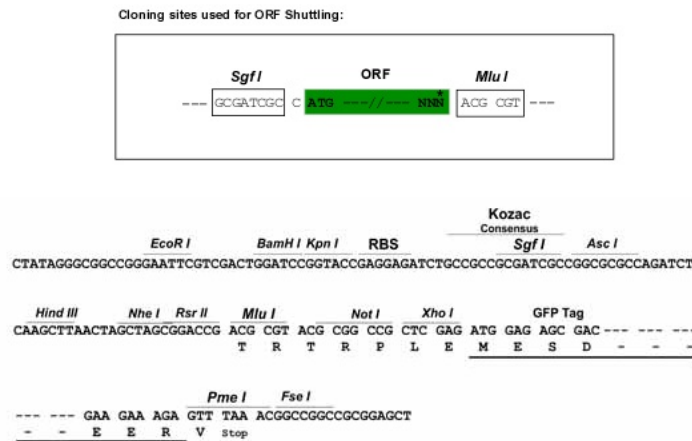
Protein Sequence: >RG224610 representing NM_000836
 Red=Cloning site Green=Tags(s)

```
MRGAGGPRGPRGPAKMLLLALACASPFPEEAPGPGGAGGPGGGLGGARPLNVALVFSGPAYAAEAARLG
PAVAAAARSPGLDVRPVALVLNGSDPRSLVLQLCDLLSGLRVHGVVVEDDSRAPAVAPILDFLSAQTSLP
IVAVHGGAAALVLPKEKGSTFLQLGSSTEQQLQVIFEVLEEYDWTFSFVAVTTRAPGHRFLSYIEVLTDG
SLVGVWEHRGALTLDPGAGEAVLSAQLRSVSAQIRLLFCAREEAEPVFRAAEEAGL TGSYVWFVMPGQLA
GGGSGAPGEPPLLPGGAPLPAGLFAVRSAGWRDDLARRVAAGVAVVARGAQALLRDYGFPELGHDCRA
QNRTHRGESLHRYFMNITWDRDYDFNEDGFLVNPVSLVVISL TRDRTWEVVGSWEQTLRLKYPLWSRYG
RFLQPVDQTQHLTVATLEERPFIIVPADPISGTCIRDSVPCRSQLNRTHSPPDPAPRPEKRCCKGFCID
ILKRLAHTIGFSYDLVLTNGKHGKIDGVWNGMIGEVFYQRADMAIGSLTINEERSEIVDFSVPFVETG
ISVMVARSNGTVSPSAFLEPYSPAVWMMFVMCLTVVAVTVFIFEYLSPVGYNRSLATGKRPGGSTFTIG
KSIWLLWALVFNNVSPVENPRGTTSKIMVLVWAFFAVIFLASYTANLAAFMIQEEYVDTVSGLSDRKFQR
PQEYPPPLKFGTVPNGSTEKNIRSNYPDMHSYVRYNQPRVEEAL TQLKAGKLD AFIDAAVLNYMARKD
EGCKLVTIGSGKVFATTGYGIALHKGSRWKRPIDLALLQFLGDDEIEMLERLWLSGICHNDKIEVMSSKL
DIDNMAGVFYMLLVAMGLSLLVFAWEHLVYWRLRHCLGPTHMRDFLLAFSRGMYSCCSAEAAPPAKPPP
PPQPLPSPAYPAPGAPGAPFVPRERASVDRWRTKGAGPPGGAGLADGFHRYYGPIEPQGLGLGLEA
RAAPRGAAGRPLSPPAAQPPQKPPASYFAIVRDKPAEPPAGAFPGFSPPPAPAAAAATAVGPPLCRLAF
EDESPPAPARWPRSDPESQPLLPGGAGGAGGTGGAGGGAPAAPPCCAAPPCPYLDLEPSPDSESDSES
LGGASLGGLDPWVFAFPYPAERLGPVGGYVSDKLGWRAGSWDYLPVRSRGAAWHCRHCASLELLP
PPRHLSCSHDGLDGGWVAPPPVWAGPLPRRRARCGCPRSHPHRPRASHRTPAAAAPHHHRHRAAGGW
DLPPPAPTSRSLEDLSSCPRAAPARRLTGPRSRHARRCPHAAHWGPPLPTASHRRHRGGDLGTRRGS AHFS
SLESEV
```

TRTRPLE - GFP Tag - V

Restriction Sites: SgfI-MluI

Cloning Scheme:

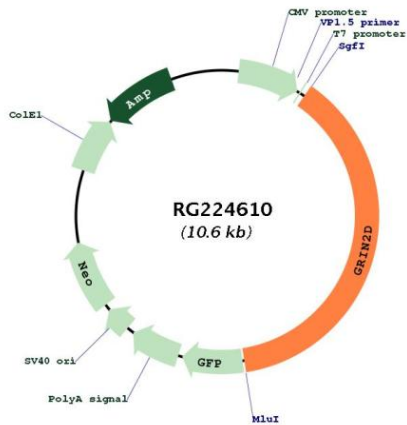


ACCN: NM_000836

ORF Size: 4008 bp

OTI Disclaimer:	The molecular sequence of this clone aligns with the gene accession number as a point of reference only. However, individual transcript sequences of the same gene can differ through naturally occurring variations (e.g. polymorphisms), each with its own valid existence. This clone is substantially in agreement with the reference, but a complete review of all prevailing variants is recommended prior to use. More info
OTI Annotation:	This clone was engineered to express the complete ORF with an expression tag. Expression varies depending on the nature of the gene.
Components:	The ORF clone is ion-exchange column purified and shipped in a 2D barcoded Matrix tube containing 10ug of transfection-ready, dried plasmid DNA (reconstitute with 100 ul of water).
Reconstitution Method:	<ol style="list-style-type: none"> 1. Centrifuge at 5,000xg for 5min. 2. Carefully open the tube and add 100ul of sterile water to dissolve the DNA. 3. Close the tube and incubate for 10 minutes at room temperature. 4. Briefly vortex the tube and then do a quick spin (less than 5000xg) to concentrate the liquid at the bottom. 5. Store the suspended plasmid at -20°C. The DNA is stable for at least one year from date of shipping when stored at -20°C.
RefSeq:	NM_000836.1 , NP_000827.1
RefSeq Size:	4299 bp
RefSeq ORF:	4011 bp
Locus ID:	2906
UniProt ID:	O15399
Cytogenetics:	19q13.33
Protein Families:	Druggable Genome, Ion Channels: Glutamate Receptors, Transmembrane
Protein Pathways:	Alzheimer's disease, Amyotrophic lateral sclerosis (ALS), Calcium signaling pathway, Long-term potentiation, Neuroactive ligand-receptor interaction
Gene Summary:	N-methyl-D-aspartate (NMDA) receptors are a class of ionotropic glutamate receptors. NMDA channel has been shown to be involved in long-term potentiation, an activity-dependent increase in the efficiency of synaptic transmission thought to underlie certain kinds of memory and learning. NMDA receptor channels are heteromers composed of the key receptor subunit NMDAR1 (GRIN1) and 1 or more of the 4 NMDAR2 subunits: NMDAR2A (GRIN2A), NMDAR2B (GRIN2B), NMDAR2C (GRIN2C), and NMDAR2D (GRIN2D). [provided by RefSeq, Mar 2010]

Product images:



Circular map for RG224610