

Product datasheet for **RG224603**

Fibronectin (FN1) (NM_212476) Human Tagged ORF Clone

Product data:

Product Type: Expression Plasmids
Product Name: Fibronectin (FN1) (NM_212476) Human Tagged ORF Clone
Tag: TurboGFP
Symbol: FN1
Synonyms: CIG; ED-B; FINC; FN; FNZ; GFND; GFND2; LETS; MSF; SMDCF
Mammalian Cell Selection: Neomycin
Vector: pCMV6-AC-GFP (PS100010)
E. coli Selection: Ampicillin (100 ug/mL)
ORF Nucleotide Sequence: >RG224603 representing NM_212476
Red=Cloning site Blue=ORF Green=Tags(s)

TTTTGTAATACGACTCACTATAGGGCGGCCGGAATTCGTCGACTGGATCCGGTACCGAGGAGATCTGCC
GCC**CGATCGCC**

ATGCTTAGGGGTCGGGGCCCGGGCTGCTGCTGCTGGCCGTCCAGTGCCTGGGGACAGCGGTGCCCTCCA
CGGGAGCCTCGAAGAGCAAGAGGCAGGCTCAGCAAATGGTTCAGCCCCAGTCCCCGGTGGCTGTCAGTCA
AAGCAAGCCCGTTGTTATGACAATGGAAAACACTATCAGATAAATCAACAGTGGGAGCGGACCTACCTA
GGCAATGCGTTGGTTTGTACTTGTATGGAGGAAGCCGAGTTTTAACTGCGAGAGTAACTGAAGCTG
AAGAGACTTGCTTTGACAAGTACTGGAACACTTACCGAGTGGGTGACTTATGAGCGTCCTAAAGA
CTCCATGATCTGGGACTGTACCTGCATCGGGGCTGGGCGAGGGAGAATAAGCTGTACCATCGCAAACCGC
TGCCATGAAGGGGTGAGTCTACAAGATTGGTACACCTGGAGGAGACCACATGAGACTGGTGGTTACA
TGTTAGAGTGTGTGTCTTGGTAATGGAAAAGGAGAATGGACCTGCAAGCCCATAGCTGAGAAGTGTTT
TGATCATGCTGCTGGGACTTCCTATGTGGTCCGAGAAACGTGGGAGAAGCCCTACCAAGGCTGGATGATG
GTAGATTGTACTTGCTGGGAGAAGGCAGCGGACGCATCACTTGCCTTCTAGAAATAGATGCAACGATC
AGGACACAAGGACATCCTATAGAATTGGAGACACCTGGAGCAAGAAGGATAATCGAGGAAACCTGCTCCA
GTGCATCTGCACAGGCAACGGCCGAGGAGAGTGGAAAGTGTGAGAGGCACACCTCTGTGCAGACCACATCG
AGCGGATCTGGCCCTTACCAGTGTTCGTGCAGCTGTTTACCAACCGCAGCCTCACCCAGCCTCCTCCT
CCTATGGCCACTGTGTACAGACAGTGGTGTGGTCTACTCTGTGGGATGCAAGTGGCTGAAGACACAAGG
AAATAAGCAAATGCTTTGCACGTGCCTGGCAACGGAGTCACTGCCAAGAGACAGCTGTAACCCAGACT
TACGGTGGCAACTCAAATGGAGAGCCATGTGTCTTACCATTACCTACAATGGCAGGACGTTCTACTCCT
GCACCACAGAAGGGCGACAGGACGGACATCTTGGTGCAGCACAACCTCGAATTATGAGCAGGACCAGAA
ATACTCTTCTGCACAGACCACACTGTTTTGGTTCAGACTCGAGGAGGAAATCCAATGGTGCCTTGTGC
CACTTCCCCTTCTATAACAACCAATTACTGATTGCCTTCTGAGGGCAGAAGAGACAACATGA
AGTGGTGTGGGACCACAGAACTATGATGCCACCAGAAGTTGGTCTGCCCATGGCTGCCACGA
GAAATCTGCACAACCAATGAAGGGTCATGTACCGCATTGGAGATCAGTGGGATAAGCAGCATGACATG



[View online »](#)

GGTCACATGATGAGGTGCACGTGTGTTGGGAATGGTCGTGGGAATGGACATGCATTGCCTACTCGCAGC
 TTCGAGATCAGTGCATTGTTGATGACATCACTTACAATGTGAACGACACATCCACAAGCGTCATGAAGA
 GGGGCACATGCTGAAGTGTACATGCTTCGGTCAGGGTCGGGGCAGGTGGAAGTGTGATCCCGTCGACCAA
 TGCCAGGATTCAGAGACTGGGACGTTTTATCAAATGGAGATTCATGGGAGAAGTATGTGCATGGTGTCA
 GATACCACTGCTACTGCTATGGCCGTGGCATTGGGGAGTGGCATTGCCAACCTTTACAGACCTATCCAAG
 CTCAAGTGGTCTGTGCAAGTATTTACTACTGAGACTCCGAGTCAGCCCAACTCCCACCCCATCCAGTGG
 AATGCACCACAGCCATCTCACATTTCCAAGTACATTCTCAGGTGGAGACCTAAAAATTCGTAGGCCGTT
 GGAAGGAAGCTACCATACCAGGCCACTTAACTCCTACCCATCAAAGGCCTGAAGCCTGGTGTGGTATA
 CGAGGGCCAGCTCATCAGCATCCAGCAGTACGGCCACCAAGAAGTGAAGTGCCTTTGACTTACCACCACC
 AGCACCAGCACACCTGTGACCAGCAACCCGTGACAGGAGAGACGACTCCCTTTTCTCCTTTGTGGCCA
 CTTCTGAATCTGTGACCGAAATCACAGCCAGTAGCTTTGTGGTCTCCTGGGTCTCAGCTTCGACACCGT
 GTCGGGATTCGGGTGGAATATGAGCTGAGTGAGGAGGGAGATGAGCCACAGTACCTGGATCTTCCAAGC
 ACAGCCACTTCTGTGAACATCCCTGACCTGCTTCTGGCCGAAAATACATTGTAATGTCTATCAGATAT
 CTGAGGATGGGGAGCAGAGTTGATCCTGTCTACTTCACAAAACACAGCGCCTGATGCCCTCCTGACCC
 GACTGTGGACCAAGTTGATGACACCTCAATTGTTGTTGCTGGAGCAGACCCAGGCTCCCATCACAGGG
 TACAGAATAGTCTATTCGCCATCAGTAGAAGGTAGCAGCACAGAAGTCAACCTTCTGAAACTGCAAAC
 CCGTCACCCTCAGTGAAGTGAACCTGGTGTTCAGTATAACATCACTATCTATGCTGTGGAAGAAAATCA
 AGAAAAGTACACCTGTTGTCAATCAACAAGAAACCCTGGCACCCACGCTCAGATACAGTGCCTCTCCC
 AGGGACCTGCAGTTTGTGGAAGTACAGACGTGAAGGTACCATCATGTGGACACCGCCTGAGAGTGCAG
 TGACCGGCTACCGTGTGGATGTGATCCCGTCAACCTGCCTGGCAGCAGCGGCAGAGGCTGCCCATCAG
 CAGGAACACCTTTCGAGAAGTACCGGGCTGTCCCTGGGGTACCTATTACTTCAAAGTCTTTCAGTG
 AGCCATGGGAGGGAGAGCAAGCCTCTGACTGCTCAACAGACAACCAAACTGGATGCTCCCACTAACCTCC
 AGTTTGTCAATGAAACTGATTCTACTGCTCTGGTGGATGGACTCCACCTCGGGCCAGATAAACAGGATA
 CCGACTGACCGTGGCCCTTACCCGAAGAGCAGCCAGGCAAGTACAATGTGGGTCCCTGTCTCCAAG
 TACCCACTGAGGAATCTGCAGCCTGCATCTGAGTACACCGTATCCCTCGTGGCCATAAAGGGCAACCAAG
 AGAGCCCCAAAGCCACTGGAGTCTTTACCACACTGCAGCCTGGGAGCTCTATTCCACCTTACAACACCGA
 GGTGACTGAGACCACCATTTGTGATCACATGGACGCCTGCTCCAAGAATTGGTTTTAAGCTGGGTGTACGA
 CCAAGCCAGGGAGGAGAGGCACCACGAGAAGTGAAGTTCAGACTCAGGAAGCATCGTTGTGTCGGCTTGA
 CTCCAGGAGTGAATACGCTACACCATCCAAGTCTGAGAGATGGACAGGAAAGAGATGCGCCAATTGT
 AAACAAAGTGGTACACCATTGTCTCCACCAACAAACTGCATCTGGAGGCAACCCCTGACTGGAGTG
 CTCACAGTCTCCTGGGAGAGGAGCACCACCCAGACATTACTGGTTATAGAATTACCACAACCCCTACAA
 ACGGCCAGCAGGAAATCTTTGGAAGAAGTGGTCCATGCTGATCAGAGCTCCTGCACTTTTGATAACCT
 GAGTCCCGGCTGGAGTACAATGTCAAGTGTTCACACTGTCAAGGATGACAAGGAAAGTGTCCCTATCTCT
 GATACCATCATCCAGCTGTTTCTCCTCCCACTGACCTGCGATTACCAACATTGGTCCAGACACCATGC
 GTGTCACCTGGGCTCCACCCCATCCATTGATTTAACCAACTTCTGGTGCCTTACTCACCTGTGAAAAA
 TGAGGAAGATGTTGAGAGTGTCAATTTCTCCTTACAGCAATGCAGTGGTCTTAACAAATCTCCTGCCT
 GGTACAGAATATGTAGTGTGCTCCAGTGTCTACGAACAACATGAGAGCACACCTCTTAGAGGAAGAC
 AGAAAACAGGTCTTGATCCCAACTGGCATTGACTTTTCTGATATTACTGCCAACTCTTTACTGTGCA
 CTGGATTGCTCCTCGAGCCACCATCACTGGTACAGGATCCGCCATCATCCCGAGCACTCAGTGGGAGA
 CCTCGAGAAGATCGGGTGGCCACTCTCGGAATCCATACCCTACCAACCTCACTCCAGGCACAGAGT
 ATGTGGTCAAGTATCGTTGCTCTAATGGCAGAGAGGAAAGTCCCTTATTGATTGGCCAACATCAACAGT
 TTCTGATGTTCCGAGGGACCTGGAAGTGTGCTGCGACCCACCAGCCTACTGATCAGCTGGGATGCT
 CCTGCTGTACAGTGAGATATTACAGGATCACTTACGGAGAGACAGGAGGAAATAGCCCTGTCCAGGAGT
 TCACTGTGCCTGGGAGCAAGTCTACAGTACCATCAGCGGCTTAAACCTGGAGTTGATTATACCATCAC
 TGTGATGCTGTCACTGGCCGTGGAGACAGCCCGCAAGCAGCAAGCCAATTTCCATTAATTACCGAACA
 GAAATTGACAAACCATCCAGATGCAAGTACCGATGTTTACAGGACAACAGCATTAGTGTCAAGTGGCTGC
 CTTCAAGTCCCCTGTTACTGGTTACAGAGTAACCACCACTCCCAAAAATGGACCAGGACCAACAAAAAC
 TAAAACCTGAGGTCCAGATCAAACAGAAATGACTATTGAAGGCTTGCAGCCACAGTGGAGTATGTGGTT
 AGTGTCTATGCTCAGAATCCAAGCGGAGAGAGTACGCCTCTGGTTCAGACTGCAGTAACCACTATTCCTG
 CACCAACTGACCTGAAGTTCACCTCAGGTACACCCACAAGCCTGAGCGCCAGTGGACACCACCAATGT
 TCAGCTCACTGGATATCGAGTGGGGTACCCCAAGGAGAAGACCGGACCAATGAAAGAAATCAACCTT
 GCTCCTGACAGCTCATCCGTGGTGTATCAGGACTTATGGTGGCCACCAATATGAAGTGAAGTGTCTATG

CTCTTAAGGACACTTTGACAAGCAGACCAGCTCAGGGAGTTGTCACCACTCTGGAGAATGTCAGCCCACC
AAGAAGGGCTCGTGTGACAGATGCTACTGAGACCACCATCACCATTAGCTGGAGAACCAAGACTGAGACG
ATCACTGGCTTCCAAGTTGATGCCGTTCCAGCCAATGGCCAGACTCCAATCCAGAGAACCATCAAGCCAG
ATGTCAGAAGCTACACCATCACAGGTTTACAACCAGGCACTGACTACAAGATCTACCTGTACACCTTGAA
TGCAAATGCTCGGAGCTCCCCTGTGGTCATCGACGCCCTCCACTGCCATTGATGCACCATCCAACCTGCGT
TTCCTGGCCACCACCCAATTCCTTGTGGTATCATGGCAGCCGCCACGTGCCAGGATTACCGGTACACA
TCATCAAGTATGAGAAGCCTGGGTCTCCTCCAGAGAAGTGGTCCCTCGGCCCCGCCTGGTGTACAGAG
GGCTACTATTACTGGCCTGGAACCGGGAACCGAATATACAATTTATGTCATTGCCCTGAAGAATAATCAG
AAGAGCGAGCCCCCTGATTGGAAGGAAAAAGACAGACGAGCTTCCCAACTGGTAACCCCTCCACACCCCA
ATCTTCATGGACCAGAGATCTTGGATGTTCTTCCACAGTTCAAAGACCCTTTTCGTCACCCACCCCTGG
GTATGACACTGGAAATGGTATTAGCTTCTGGCATTCTGGTCAGCAACCCAGTGTGGCAACAAATG
ATCTTTGAGGAACATGGTTTTAGGCGGACCACACCGCCACAACGGCCACCCCAATAAGGCATAGGCCAA
GACCATAACCCGCCGAATGTAGGTGAGGAAATCAAATTTGGTCACATCCCCAGGGAAGATGTAGACTATCA
CCTGTACCCACACGGTCCGGGACTCAATCAAATGCCTCTACAGGACAAGAAGCTCTCTCTCAGACAACC
ATCTCATGGGCCCATTCAGGACACTTCTGAGTACATCATTTTCATGTCATCCTGTTGGCACTGATGAAG
AACCCTTACAGTTCAGGGTTCCTGGAACCTCTACCAAGTGCACACTGACAGGCCTCACCAGAGGTGCCAC
CTACAACATCATAGTGGAGGCACTGAAAGACCAGCAGAGGCATAAGGTTCCGGGAAGAGGTTGTTACCGTG
GGCAACTCTGTCAACGAAGGCTTGAACCAACCTACGGATGACTCGTGCTTTGACCCTACACAGTTTCCC
ATTATGCCGTTGGAGATGAGTGGGAACGAATGTCTGAATCAGGCTTTAAACTGTTGTGCCAGTGCTTAGG
CTTTGGAAGTGGTCATTTAGATGTGATTATCTAGATGGTGCCATGACAATGGTGTGAACATAAGATT
GGAGAGAAGTGGGACCGTCAGGGAGAAAATGGCCAGATGATGAGCTGCACATGCTTTGGGAACGGAAAAG
GAGAATCAAGTGTGACCCTCATGAGGCAACGTGTTATGATGATGGGAAGACATAACCAGTAGGAGAACA
GTGGCAGAAGGAATATCTCGGTGCCATTTGCTCCTGCACATGCTTTGGAGGCCAGCGGGGCTGGCGCTGT
GACAACTGCCGCAGACCTGGGGTGAACCCAGTCCCAGGCACTACTGGCCAGTCTACAACCAAGTATT
CTCAGAGATACCATCAGAGAACAACAATAATGTTAATTGCCAATTGAGTGCTTCATGCCTTTAGATGT
ACAGGCTGACAGAGAAGATTCCCGAGAG

ACGCGTACGCGGCCGCTCGAG - GFP Tag - GTTTAA

Protein Sequence: >RG224603 representing NM_212476
 Red=Cloning site Green=Tags(s)

```

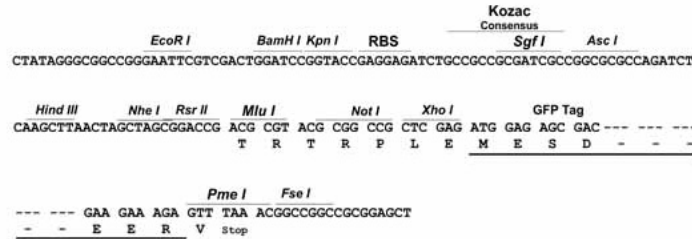
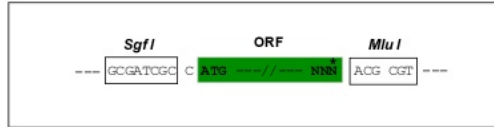
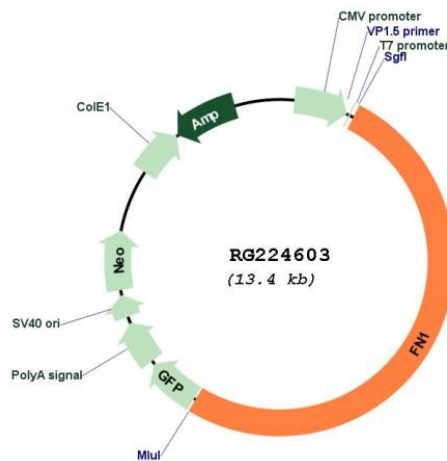
MLRGPGLLLLLAVQCLGTAVPSTGASKSKRQAQQMVQPQSPVAVSQSKPGCYDNGKHYQINQQWERTYL
GNALVCTCYGGSRGFNCESEKPEAEETCFDKYTGNTYRVGDTYERPKDSMIWDCTCIGAGRGRISCTIANR
CHEGGQSYKIGDTRRRPHETGGYMLECVCLGNGKGEWTKPIAEKCFDHAAGTSYVVGETWEKPYQGMM
VDCTCLGEGSGRITCTSRNRCNDQDTRTSYRIGDTSKKNRGNLLQCICTGNRGEWK CERHTSVQTTT
SGSGPFTDVRAAVYQPQPHPPYGHCVTD SGVVYSVGMQWLKTQGNKQMLCTCLGNGVSCQETAVTQT
YGGNSNGEPCVLPFTYNGRTFYSC TTEGRQDGHLCWSTTSNYEQDQKYSFCTDHTVVLVQTRGNSNGALC
HFPFLYNNHNYTDCTSEGRDNMKWCGTQNYDADQKFGFCPMAAHEEICTTNEGVMYRIGDQWDKQHDM
GHMMRCTCVGNRGEWTCIAYSQLRDQCI VDDITYNVNDFHHRHEEGHMLNCTCFGQGRGRWKCDPVDQ
CQDSETGTFYQIGDSWEKVVHGVRYQCYGRGIGEWHCQPLQTYPSSSGPVEVFI TETSPQNSHPIQW
NAPQPSHISKYILRWRPKNSVGRWKEATIPGHLNSYTIKGLKPGVVYEGQLISIQYGHQEVTRDFTTT
STSTPVTNNTVTGETTFFSPLVATSESVTEITASSFVSWVSASDTVSGFRVEYELSEEGDEPQYLDLPS
TATSVNIPDLLPGRKYIVNYYQISEDEQSLILSTSQTAPDAPPDPTVDQVDDTSIVVRSRQPAPITG
YRIVYSPSVEGSSTELNLPETANSVTLSDLQPGVQYNITIIYAVEENQESTPVVIQGETTGTPRSDTVSP
RDLQFVEVTDVKVTIMWTPPE SAVTYRVDVIPVNL PGEHGQRLPISRNTFAEVTGLSPGVTYFYKFAV
SHGRESKPLTAQQTTKLDAPTNLQFVNEDSTVLVRWTPPRAQITGYRLTVGLTRRQPRQYVNGPSVSK
YPLRNLQPASEYTVSLVAIKGNQESPKATGVFTTLQPGSSIPPYNTEVTE TTIIVITWTPAPRIGFKLGV
PSQGEAPREVTSDSGSIVVSGLTPGV EYVYTIQVLRDQGERDAPIVNKVVTPSPPTNLHLEANPDTGV
LTVSWERSTTDPDITGYRITTTPTNGQQGNSLEEVHADQSSCTFDNLSPGLEYNVSVYTVKDDKESVPI
DTIIPAVPPPTDLRFNIGPDMRVTWAPPPSIDL TNFLVRYSPVKNEEDVAELSI SPSDNAVVLNLLP
GTEYVVS SVSYEQHESTPLRGRQKTGLD SPTGIDFSDITANSFTVHWIAPRATITGYRIRHHPEHFSGR
PREDRVPHSRNSITLNLTPGTEYVVSIVALNGREE SPLLI GQQSTVSDVPRDLEVVAATPTSLLSWDA
PAVTVRYRITYGETGGNSPVQEFVPGSKSTATISGLKPGVDYITVYAVTGRGDSPASSKPI SINYRT
EIDKPSQM QVTDVQDNSISVKWLPSSSPVTGYRVTTTPKNGPGPTKTKTAGPDQTEMTIEGLQPTVEYV
SVYAQNPSGESQPLVQTAVTTIPAPD LKFTQVTP TSLSAQWTPPNVQLTGYRVRVTPKEKTGPMKEINL
APDSSSVVSGLMVATKYEVSVALKDTLTSRPAQGVVTTLENSP PRRARVTDATETTITISWRKTET
ITGFQVD AVPANGQTPIQRTIKPDVRSYITGLQPGTDYKIYLYTLNDNARSSPVVIDASTAIDAPSNLR
FLATTPNSLLVSWQPPRARITGYIIKYEKPGSPPREVVPRPRPGVTEATITGLEPGTEYTIYVIALKNNQ
KSEPLIGRKKTDEL PQLVTLPHPNLHGPEILDVPSTVQKTPFVTHPGYDTGNGIQLPGTSGQQPSVGQQM
IFEEHGFRRTPPTATPIRHRPRYP PNVGEEIQIGHIPREDVDYHLYPHGPGLNPNASTGQEALSQTT
ISWAPFQDTSEYIISCHPVGTDEEPLQFRVPGTST SATLTGLTRGATYNIIVEALKDQQRHKVREEVTV
GNSVNEGLNQPTDDSCFDPYTVSHYAVGDEWERMSESGFKLLCQCLGFGSGHFRCDSSRWCHDNGVNYKI
GEKWDRQGENGQMMSCTCLGNGKGEFKCDPHEATCYDDGKTYHVGEQWQKEYLGAIC SCTCFGGQRGWR
DNCRRPGGEPSEGTGQSYNQYSQRYHQRTNTNVNCP IECFMPLDVQADREDSRE
  
```

TRTRPLE - GFP Tag - V

Restriction Sites: Sgfl-MluI

Cloning Scheme:

Cloning sites used for ORF Shutting:


Plasmid Map:

ACCN: NM_212476

ORF Size: 6888 bp

OTI Disclaimer: The molecular sequence of this clone aligns with the gene accession number as a point of reference only. However, individual transcript sequences of the same gene can differ through naturally occurring variations (e.g. polymorphisms), each with its own valid existence. This clone is substantially in agreement with the reference, but a complete review of all prevailing variants is recommended prior to use. [More info](#)
OTI Annotation: This clone was engineered to express the complete ORF with an expression tag. Expression varies depending on the nature of the gene.

Components: The ORF clone is ion-exchange column purified and shipped in a 2D barcoded Matrix tube containing 10ug of transfection-ready, dried plasmid DNA (reconstitute with 100 ul of water).

Reconstitution Method:	<ol style="list-style-type: none">1. Centrifuge at 5,000xg for 5min.2. Carefully open the tube and add 100ul of sterile water to dissolve the DNA.3. Close the tube and incubate for 10 minutes at room temperature.4. Briefly vortex the tube and then do a quick spin (less than 5000xg) to concentrate the liquid at the bottom.5. Store the suspended plasmid at -20°C. The DNA is stable for at least one year from date of shipping when stored at -20°C.
RefSeq:	NM_212476.2
RefSeq Size:	8272 bp
RefSeq ORF:	6891 bp
Locus ID:	2335
UniProt ID:	P02751
Cytogenetics:	2q35
Protein Families:	Druggable Genome, ES Cell Differentiation/IPS, Secreted Protein
Protein Pathways:	ECM-receptor interaction, Focal adhesion, Pathways in cancer, Regulation of actin cytoskeleton, Small cell lung cancer
Gene Summary:	<p>This gene encodes fibronectin, a glycoprotein present in a soluble dimeric form in plasma, and in a dimeric or multimeric form at the cell surface and in extracellular matrix. The encoded preproprotein is proteolytically processed to generate the mature protein. Fibronectin is involved in cell adhesion and migration processes including embryogenesis, wound healing, blood coagulation, host defense, and metastasis. The gene has three regions subject to alternative splicing, with the potential to produce 20 different transcript variants, at least one of which encodes an isoform that undergoes proteolytic processing. The full-length nature of some variants has not been determined. [provided by RefSeq, Jan 2016]</p>