

Product datasheet for **RG222873**

CTNND1 (NM_001085460) Human Tagged ORF Clone

Product data:

Product Type:	Expression Plasmids
Product Name:	CTNND1 (NM_001085460) Human Tagged ORF Clone
Tag:	TurboGFP
Symbol:	CTNND1
Synonyms:	BCDS2; CAS; CTNND; p120; p120(CAS); p120(CTN); P120CAS; P120CTN
Mammalian Cell Selection:	Neomycin
Vector:	pCMV6-AC-GFP (PS100010)
E. coli Selection:	Ampicillin (100 ug/mL)



[View online »](#)

ORF Nucleotide Sequence:

>RG222873 representing NM_001085460
 Red=Cloning site Blue=ORF Green=Tags(s)

TTTTGTAATACGACTCACTATAGGGCGGCCGGGAATTCGTCGACTGGATCCGGTACCGAGGAGATCTGCC
 GCC**CGGATCGCC**

ATGGACGACTCAGAGGTGGAGTCCAGCCAGCATCTTGGCCTCTGTGAAGGAACAAGAGGCCAGTTTG
 AGAAGCTGACCCGGGCGCTGGAGGAGGAACGGCGCCACGCTCTCGGCGCAGCTGGAACGCGTCCGGGTCTC
 ACCACAAGATGCCAACCCACTCATGGCCAACGGCACACTACCCGCCGGCATCAGAACGGCCGGTTTGTG
 GGCGATGCTGACCTTGAAGACAGAAAATTTTCAGATTTGAAACTCAACGGACCCAGGATCACAGTCACC
 TTCTATATAGCACCATCCCAGGATGCAGGAGCCGGGCGAGATTGTGGAGACCTACACGGAGGAGGATCC
 TGAGGGAGCCATGTCTGTAGTCTCTGTGGAGACCTCAGATGATGGGACCACTCGGCGCACAGAGACCACG
 GTCAAGAAAGTAGTGAAGACTGTGACAACCGGACAGTACAGCCAGTCGATATGGGACCAGACGGGTTGC
 CTGTGGATGCTTCATCAGTTTCTAACAATAATCCAGACTTTGGGTCGTGATTTCCGCAAGAATGGCAA
 TGGGGGACCTGGTCCCTATGTGGGGCAAGCTGGCACTGCTACCCTCCTAGGAACCTCCACTACCCTCCT
 GATGGTTATAGTCGCCACTATGAAGATGGTTATCCAGGTGGCAGTGATAACTATGGCAGTCTGTCCCGGG
 TGACCCGCATTGAGGAGCGGTATAGGCCAGCATGGAAGGCTACCGGGCACCTAGTAGACAGGATGTGTA
 TGGGCCCCAACCCAGGTTCCGGTAGGTGGGAGCAGCGTGGATCTGCATCGCTTTCATCCAGAGCCTTAT
 GGGCTAGAGGATGACCAGCGTAGTATGGGCTATGATGACCTGGATTATGGTATGATGTCTGATTATGGCA
 CTGCCCGTCGGACTGGGACACCCCTCGACCCTCGTCGGCGCCTCAGGAGCTATGAAGACATGATTGGTGA
 GGAGGTGCCATCGGATCAATACTACTGGGCTCCTTTGGCCAGCATGAGCGAGGAAGTTTAGCAAGCTTG
 GATAGCTGCGCAAAGGAGGGCCCTCCACCTCCTAATTGGAGACAGCCAGAGCTGCCAGAGGTGATCGCCA
 TGCTTGGATTCCGCTTGGATGCTGTCAAGTCCAATGCAGCTGCATACCTGCAACACTTATGCTACCGCAA
 TGACAAGGTGAAGACTGACGTGCGGAAGCTCAAGGGCATCCAGTACTGGTGGGATTGTTAGACCATCCC
 AAAAAGGAAGTGACCTTGGAGCCTGTGGAGCTCTCAAGAATATCTCTTTTGGACGTGACCAGGATAACA
 AGATTGCCATAAAAACTGTGATGGTGTGCCTGCCCTTGTGCGATTGCTTCGAAAGGCTCGTGATATGGA
 CCTTACTGAAGTTATTACCGGAACCCTGTGGAATCTTTCATCCCATGACTCAATCAAAATGGAGATTGTG
 GACCATGCACTGCATGCCTTGACAGATGAAGTGATCATTCTCATTCTGGTTGGGAGCGGGAACCTAATG
 AAGACTGTAAGCCACGCCATATTGAGTGGGAATCGGTGCTACCAACACAGCTGGCTGCCTTAGGAATGT
 AAGCTCAGAGAGGAGTGAAGCTCGCCGGAACCTCGGGAATGTGATGGTTTAGTTGATGCCCTCATTTTC
 ATTTGTTACGGCTGAGATTGGGCAGAAGGATTTCAGACAGCAAGCTTGTAGAGAAGTGTGTTTGCCTCTTC
 GGAACCTTATCATATCAAGTTACCGGGAGATCCCACAGGCAGAGCGTTACCAAGAGGCAGCTCCCAATGT
 TGCCAACAATACTGGGCCACATGCTGCCAGTTGCTTTGGGGCCAAGAAGGGCAAAGGGAAAAACCTATA
 GAGGATCCAGCAAACGATACAGTGGATTTCCCTAAAAGAACGAGTCCAGCTCGAGGCTATGAGCTTAT
 TTCAGCCAGAGGTGGTTCGGATATACATCTCACTTCTTAAGGAGAGCAAGACTCCTGCCATCCTAGAAGC
 CTCAGCTGGAGCTATCCAGAACTGTGTGCTGGGCGCTGGACGTATGGTCGATACATCCGCTCTGCTCTG
 CGTCAAGAGAAGGCTCTTTCTGCCATAGCTGACCTCCTGACTAATGAACATGAACGGGTGGTGAAGCTG
 CATCTGGAGCACTGAGAAAACCTGGCTGTGGATGCTCGCAACAAAGAATTAATTGGTAAACATGCTATTCC
 TAACCTGGTAAAGAATCTGCCAGGAGGACAGCAGAACTCCTCTTGGAAATTTCTCTGAGGACACTGTCATC
 TCTATTTTGAACACTATCAACGAGGTTATCGCTGAGAAGTTGGAGGCTGCCAAAAAGCTTCGAGAGACAC
 AGGGTATTGAGAAGCTGGTGTGATCAACAATCAGGGAACCGCTCAGAAAAAGAAGTTCGAGCAGCAGC
 ACTTGTATTACAGACAATCTGGGATATAAGGAACTGCGGAAGCCACTGGAAAAAGAAGGATGGAAGAAA
 TCAGACTTTCAGGTGAATCTAAACAATGCTTCCCGAAGCCAGAGCAGTCAATCATATGATGATAGTACTC
 TCCCTCTCATTGACCGGAACCAAAAATCAGATAAGAACTGATCGGGAAGAAATTCAGATGAGCAATAT
 GGGATCAAACACAAAATCACTAGATAACAATAATCCACACCAATGAGAGAGGAGACCACAATAGAACA
 CTGGATCGATCGGGGATCTAGGCGACATGGAGCCATTGAAGGGAACAACACCCTTGATGCAGAAGATT

AGCGGACCGACGCGTACGCGGCCGCTCGAG – GFP Tag – GTTTAA

Protein Sequence: >RG222873 representing NM_001085460
 Red=Cloning site Green=Tags(s)

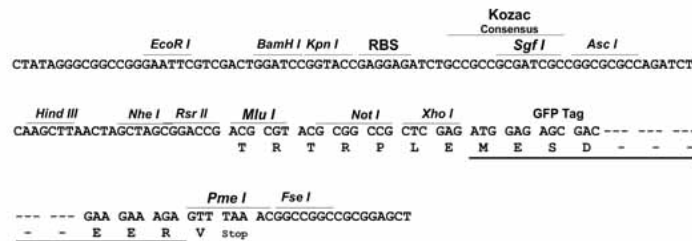
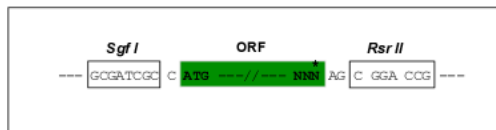
MDDSEVESTASILASVKEQEAQFEKLTRALEEERRHVSAQLERVRVSPQDANPLMANGTLTRRHQNGRFV
 GDADLERQKFSCLKLNGPQDHSLLYSTIPRMQEPGQIVETYTEDPEGAMSVSVETSDDGTTTRRTETT
 VKKVVKTVTTTRTVQPVAMGPDGLPVDASSVSNNYIQTLGRDFRKNNGGPGPYVQGAGTATLPRNFHYPP
 DGYSRHYEDGYPGSDNYGSLSRVTRIEERYRPSMEGYRAPSRQDVYGPQPQVRVGGSSVDLHRFHPEPY
 GLEDDQRSMGYDDL DYGMMSDYGTARRTGTPSDPRRRLRSYEDMIGEEVPSDQYYWAPLAQHERGSLASL
 DSLRKGPPPPNWRQPELPEVIAMLGFRLLDAVKSNAAAYLQHLCYRNDKVKT DVRKLGKIPVLVGLLDHP
 KKEVHLGACGALKNISFGRDQDNKIAIKNCDGVPALVRLLRKARDMDL TEVITGTLWNLSSHDSIKMEIV
 DHALHAL TDEVIIPHSGWEREPNEDCKPRHIEWESVL TNTAGCLRNVSSESEARRKLRECDGLVDALIF
 IVQAEIGQKDSKLVENCVCLLRNLSYQVHREIPQAERYQEAAPNVANNTGPHAASCFGAKKGGKPKPI
 EDPANDTVDFPKRTSPARGYELLFQPEVVRIYISLLKESKTPAILEASAGAIQNL CAGRWTYGRYIRSAL
 RQEKALSAIADLLTNEHERVVKAASGALRNLAVDARNKELIGKHAIPNLVKNLPGGQQNSSWNFSEDTVI
 SILNTINEVIAENLEAAKKLRETQGIEKLV L INKSGNRSEKEVRAAALVLQTIWGYKELRKPLEKEGWKK
 SDFQVNLNNASRSQSSHSYDDSTLPLIDRNQKSDKKPDREEIQMSNMGSNTKSLDNNYSTPNERGDHNR
 LDRSGDLGDMEPLKGTTPLMQKI

SGPTRRRLE - GFP Tag - V

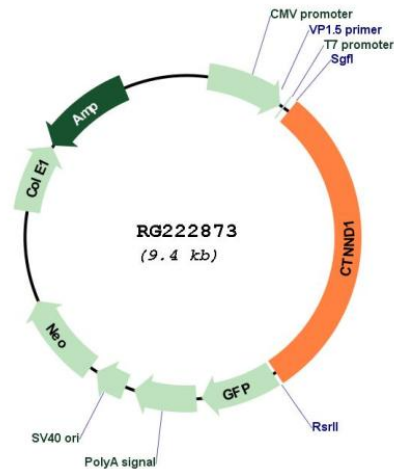
Restriction Sites: SgfI-RsrII

Cloning Scheme:

Cloning sites used for ORF Shuttling:



Plasmid Map:



ACCN: NM_001085460

ORF Size: 2799 bp

OTI Disclaimer: The molecular sequence of this clone aligns with the gene accession number as a point of reference only. However, individual transcript sequences of the same gene can differ through naturally occurring variations (e.g. polymorphisms), each with its own valid existence. This clone is substantially in agreement with the reference, but a complete review of all prevailing variants is recommended prior to use. [More info](#)

OTI Annotation: This clone was engineered to express the complete ORF with an expression tag. Expression varies depending on the nature of the gene.

Components: The ORF clone is ion-exchange column purified and shipped in a 2D barcoded Matrix tube containing 10ug of transfection-ready, dried plasmid DNA (reconstitute with 100 ul of water).

Reconstitution Method:

1. Centrifuge at 5,000xg for 5min.
2. Carefully open the tube and add 100ul of sterile water to dissolve the DNA.
3. Close the tube and incubate for 10 minutes at room temperature.
4. Briefly vortex the tube and then do a quick spin (less than 5000xg) to concentrate the liquid at the bottom.
5. Store the suspended plasmid at -20°C. The DNA is stable for at least one year from date of shipping when stored at -20°C.

RefSeq: [NM_001085460.1](#), [NP_001078929.1](#)

RefSeq Size: 6185 bp

RefSeq ORF: 2802 bp

Locus ID: 1500

UniProt ID: [O60716](#)

Cytogenetics: 11q12.1

Protein Families: Druggable Genome

Protein Pathways: Adherens junction, Leukocyte transendothelial migration

Gene Summary: This gene encodes a member of the Armadillo protein family, which function in adhesion between cells and signal transduction. Multiple translation initiation codons and alternative splicing result in many different isoforms being translated. Not all of the full-length natures of the described transcript variants have been determined. Read-through transcription also exists between this gene and the neighboring upstream thioredoxin-related transmembrane protein 2 (TMX2) gene. [provided by RefSeq, Dec 2010]