

Product datasheet for **RG222455**

Myelin oligodendrocyte glycoprotein (MOG) (NM_206809) Human Tagged ORF Clone

Product data:

Product Type:	Expression Plasmids
Product Name:	Myelin oligodendrocyte glycoprotein (MOG) (NM_206809) Human Tagged ORF Clone
Tag:	TurboGFP
Symbol:	Myelin oligodendrocyte glycoprotein
Synonyms:	BTN6; BTNL11; MOGIG2; NRCLP7
Mammalian Cell Selection:	Neomycin
Vector:	pCMV6-AC-GFP (PS100010)
E. coli Selection:	Ampicillin (100 ug/mL)
ORF Nucleotide Sequence:	>RG222455 representing NM_206809 Red=Cloning site Blue=ORF Green=Tags(s)

TTTTGTAATACGACTCACTATAGGGCGGCCGGAATTCGTCGACTGGATCCGGTACCGAGGAGATCTGCC
GCC**CGATCGCC**

ATGGCAAGCTTATCAAGACCCTCTGCCAGCTGCCTCTGCTCCTTCTCCTCCTCCTCCTCCAAG
TGTCTTCAGCTATGCAGGGCAGTTCAGAGTGATAGGACCAAGACACCCTATCCGGGCTCTGGTCGGGA
TGAAGTGAATTGCCATGTCGATATCTCTGGGAAGAAGCTACAGGCATGGAGGTGGGTGGTACCGC
CCCCCTTCTCTAGGGTGGTTCATCTCTACAGAAATGGCAAGGACCAAGATGGAGACCAGGCACCTGAAT
ATCGGGGCGGACAGAGCTGCTGAAAGATGCTATTGGTGAGGAAAGGTGACTCTCAGGATCCGGAATGT
AAGTTTCTCAGATGAAGGAGTTTCACCTGCTTCTCCGAGATCATTCTTACCAAGAGGAGGCAGCAATG
GAATTGAAAGTAGAAGATCCTTTCTACTGGGTGAGCCCTGGAGTCTGTTCTCCTCGCGGTGCTGCCTG
TGCTCCTCCTGCAGATCACTGTTGGCCTCATCTTCTCTGCTGAGTACAGACTGAGAGGAAAACCTTCG
AGCAGAGATAGAGAATCTCCACCGGACTTTTGTACCCCACTTTCTGAGGGTGCCCTGCTGGAAGATAACC
CTGTTTGAATTGTGCCGGTCTTGGACCCTTGGTTGCCTTGATCATCTGCTACAACCTGGCTACATCGAA
GACTAGCAGGGCAATTCCTTGAAGAGCTACGAAATCCCTTC

ACGCGTACGCGGCCGCTCGAG - GFP Tag - GTTTAA



[View online »](#)

Protein Sequence: >RG222455 representing NM_206809
 Red=Cloning site Green=Tags(s)

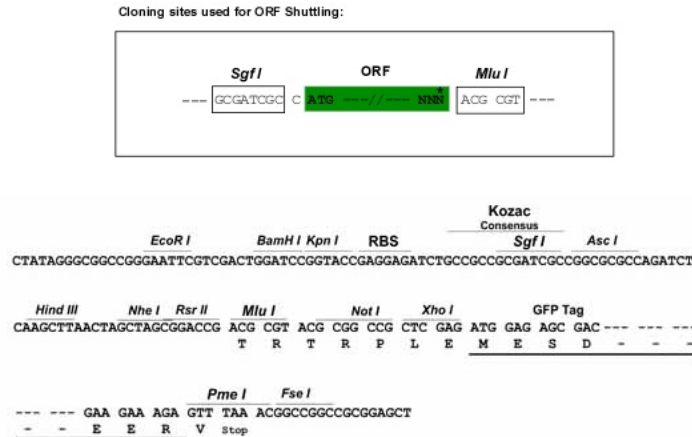
MASLSRPSLPSCLCSFLLLLLLQVSSSYAGQFRVIGPRHPRALVGDEVELPCRISPGKNATGMEVGWYR
 PPFSRVHLYRNGKDQDQDAPEYRGRTELLKDAIGEGKVTLRIRNVRFSDGGFTCFFRDHSYQEEAAM
 ELKVEDPFYWVSPGVLVLLAVLPVLLQLITVGLIFLCLQYRLRGKLRAE IENLHRTFDPHFLRVPCWKIT
 L FVIVPVLGPLVALIICYNWLHRRLAGQFLEELRNPF

TRTRPLE - GFP Tag - V

Chromatograms: https://cdn.origene.com/chromatograms/ja2290_c10.zip

Restriction Sites: SgfI-MluI

Cloning Scheme:



ACCN: NM_206809

ORF Size: 741 bp

OTI Disclaimer: The molecular sequence of this clone aligns with the gene accession number as a point of reference only. However, individual transcript sequences of the same gene can differ through naturally occurring variations (e.g. polymorphisms), each with its own valid existence. This clone is substantially in agreement with the reference, but a complete review of all prevailing variants is recommended prior to use. [More info](#)

OTI Annotation: This clone was engineered to express the complete ORF with an expression tag. Expression varies depending on the nature of the gene.

Components: The ORF clone is ion-exchange column purified and shipped in a 2D barcoded Matrix tube containing 10ug of transfection-ready, dried plasmid DNA (reconstitute with 100 ul of water).

Reconstitution Method:

1. Centrifuge at 5,000xg for 5min.
2. Carefully open the tube and add 100ul of sterile water to dissolve the DNA.
3. Close the tube and incubate for 10 minutes at room temperature.
4. Briefly vortex the tube and then do a quick spin (less than 5000xg) to concentrate the liquid at the bottom.
5. Store the suspended plasmid at -20°C. The DNA is stable for at least one year from date of shipping when stored at -20°C.

RefSeq: [NM_206809.4](#)

RefSeq Size: 2119 bp

RefSeq ORF: 744 bp

Locus ID: 4340

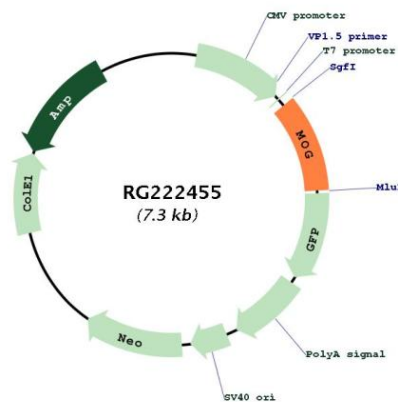
UniProt ID: [Q16653](#)

Cytogenetics: 6p22.1

Protein Families: Transmembrane

Gene Summary: The product of this gene is a membrane protein expressed on the oligodendrocyte cell surface and the outermost surface of myelin sheaths. Due to this localization, it is a primary target antigen involved in immune-mediated demyelination. This protein may be involved in completion and maintenance of the myelin sheath and in cell-cell communication. Alternatively spliced transcript variants encoding different isoforms have been identified. [provided by RefSeq, Jul 2008]

Product images:



Circular map for RG222455