

Product datasheet for **RG220952**

NLRP3 (NM_004895) Human Tagged ORF Clone

Product data:

Product Type:	Expression Plasmids
Product Name:	NLRP3 (NM_004895) Human Tagged ORF Clone
Tag:	TurboGFP
Symbol:	NLRP3
Synonyms:	AGTAVPRL; All; AVP; C1orf7; CIAS1; CLR1.1; DFNA34; FCAS; FCAS1; FCU; KEFH; MWS; NALP3; PYPAF1
Mammalian Cell Selection:	Neomycin
Vector:	pCMV6-AC-GFP (PS100010)
E. coli Selection:	Ampicillin (100 ug/mL)
ORF Nucleotide Sequence:	>RG220952 representing NM_004895 Red=Cloning site Blue=ORF Green=Tags(s)

TTTTGTAATACGACTCACTATAGGGCGGCCGGAATTCGTCGACTGGATCCGGTACCGAGGAGATCTGCC
GCC**GCGATCGCC**

ATGAAGATGGCAAGCACCCGCTGCAAGCTGGCCAGGTACCTGGAGGACCTGGAGGATGTGGACTTGAAGA
AATTTAAGATGCACTTAGAGGACTATCCTCCCCAGAAGGGCTGCATCCCCCTCCCGAGGGGTGAGACAGA
GAAGGCAGACCATGTGGATCTAGCCACGCTAATGATCGACTTCAATGGGGAGGAGAAGGCGTGGCCATG
GCCGTGTGGATCTTCGCTGCGATCAACAGGAGAGACCTTTATGAGAAAGCAAAAAGAGATGAGCCGAAGT
GGGTTTCAGATAATGCACGTGTTTCGAATCCCCTGTGATATGCCAGGAAGACAGCATTGAAGAGGAGTG
GATGGGTTTACTGGAGTACCTTTTCGAGAATCTCTATTTGTAATAAAGAAAGATTACCGTAAGAAGTAC
AGAAAGTACGTGAGAAGCAGATTCAGTGCATTGAAGACAGGAATGCCCGTCTGGGTGAGAGTGTGAGCC
TCAACAAACGCTACACACGACTGCGTCTCATCAAGGAGCACCGGAGCCAGCAGGAGAGGGAGCAGGAGCT
TCTGGCCATCGGCAAGACCAAGACGTGTGAGAGCCCCGTGAGTCCCATTAAAGATGGAGTTGCTGTTTGC
CCCGATGATGAGCATTCTGAGCCTGTGCACACCGTGGTGTTCAGGGGGCGGCAGGGATTGGGAAAAACA
TCCTGGCCAGGAAGATGATGTTGGACTGGGCGTCGGGGACACTCTACCAAGACAGGTTTACTATCTGTT
CTATATCCACTGTGAGAGGTGAGCCTTGTGACACAGAGGAGCCTGGGGACCTGATCATGAGCTGCTGC
CCCAGCCAAACCCATCCACAAGATCGTGAGAAAACCTCCAGAATCCTCTTCCTCATGGACGGCT
TCGATGAGCTGCAAGGTGCCTTTGACGAGCACATAGGACCGCTCTGCACTGACTGGCAGAAGGCCGAGCG
GGGAGACATTCTCTGAGCAGCCTCATCAGAAAGAAGCTGCTTCCGAGGCCTCTCTGCTCATCACCAGC
AGACCTGTGGCCCTGGAGAAACTGCAGCACTTGCTGGACCATCCTCGGCATGTGGAGATCCTGGGTTTCT
CCGAGGCCAAAAGGAAAGAGTACTTCTTCAAGTACTTCTCTGATGAGGCCAAGCCAGGGCAGCCTTCAG
TCTGATTACAGGAGAACGAGGTCTCTTACCATGTGCTTCATCCCCCTGGTCTGCTGGATCGTGTGCACT
GGACTGAAACAGCAGATGGAGAGTGGCAAGAGCCTTGCCAGACATCCAAGACCACCACCGCGGTGTACG
TCTTCTTCTTCCAGTTTGTGTCAGCCCCGGGAGGGAGCCAGGAGCACGGCCTCTGCGCCACCTCTG



[View online >](#)

```
GGGGCTGCTCTTTGGCTGCAGATGGAATCTGGAACCGAAAATCCTGTTTGAGGAGTCCGACCTCAGG
AATCATGGACTGCAGAAGGCGGATGTGTCTGCTTTCTGAGGATGAACCTGTTCCAAAAGGAAGTGGACT
GCGAGAAGTTCTACAGCTTCATCCACATGACTTTCCAGGAGTTCTTTGCCGCCATGTACTACCTGCTGGA
AGAGGAAAAGGAAGGAAGGACGAACGTTCCAGGGAGTCGTTTGAAGCTTCCCAGCCGAGACGTGACAGTC
CTTCTGGAAAATATGGCAAATTCGAAAAGGGGTATTTGATTTTTGTTGTACGTTTCTCTTTGGCCTGG
TAAACCAGGAGAGGACCTCCTACTTGGAGAAGAAATTAAGTTGCAAGATCTCTCAGCAAAATCAGGCTGGA
GCTGCTGAAATGGATTGAAGTGAAGCCAAAGCTAAAAAGCTGCAGATCCAGCCAGCCAGCTGGAATTG
TTCTACTGTTTGTACGAGATGCAGGAGGAGGACTTCGTGCAAAGGCCATGGACTATTTCCCAAGATTG
AGATCAATCTCTCCACCAAGAAATGGACCACATGGTTTCTCCTTTTGCATTGAGAAGTGCATCGGGTGA
GTCACTGTCCCTGGGTTTCTCCATAACATGCCCAAGGAGGAAGAGGAGGAGGAAAAGGAAGGCCGACAC
CTTGATATGGTGCAGTGTGCTCCCAAGCTCCTCTCATGCTGCCTGTTCTCATGGATTGGTGAACAGCC
ACCTCACTTCCAGTTTTTCCGGGGCCTTTTTCAGTTCTGAGCACCAGCCAGAGTCTAACTGAATTGGA
CCTCAGTGACAATCTCTGGGGACCCAGGGATGAGAGTGTGTGTGAAACGCTCCAGCATCCTGGCTGT
AACATTCGGAGATTGTGGTTGGGGCGCTGTGCCCTCTCGCATGAGTGTCTCGACATCTCCTTGGTCC
TCAGCAGCAACCAGAAGCTGGTGGAGCTGGACCTGAGTGACAACGCCCTCGGTGACTTCGGAATCAGACT
TCTGTGTGTGGGACTGAAGCACCTGTTGTGCAATCTGAAGAAGCTCTGGTTGGTCACTGCCTCACA
TCAGCATGTTGTGAGGATCTTGATCAGTATTGAGCACCAGCCATTCCCTGACCAGACTCTATGTGGGGG
AGAATGCCTTGGGAGACTCAGGAGTCGCAATTTTATGTGAAAAAGCCAAGAATCCACAGTGAACCTGCA
GAAACTGGGGTGGTGAATCTGGCCTTACGTCAGTCTGTTGTTGAGCTTTGCTCGGTACTCAGCACT
AATCAGAATCTCACGCACCTTTACCTGCGAGGCAACACTCTCGGAGACAAGGGGATCAAACACTCTGTG
AGGGACTCTTGACCCCGACTGCAAGCTTCAGGTGTTGGAATTAGACAACGCAACCTCACGTACACTG
CTGCTGGGATCTTTCCACACTTCTGACCTCCAGCCAGAGCCTGCGAAAGCTGAGCCTGGGCAACAATGAC
CTGGGCGACCTGGGGTTCATGATGTTCTGTGAAGTGTGAAACAGCAGAGCTGCCTCTCGACAACCTGG
GGTTGCTGAAAATGATTTCAATTATGAGACAAAAAGTGCCTTAGAAACACTTCAAGAAGAAAAGCCTGA
GCTGACCGTCGCTTTGAGCCTTCTTGG
```

ACGCGTACGCGGCCGCTCGAG - GFP Tag - GTTTAA

Protein Sequence:

>RG220952 representing NM_004895

Red=Cloning site Green=Tags(s)

```
MKMASTRCKLARYLEDLEDVLDLKKFKMHLEDYPPQKGCIPRPGQTEKADHVLDLTLMDFNNGEEKAWAM
AVWIFAAINRRDLYEKAKRDEPKWGSNARVSNPTVICQEDSIEEEWMGLLEYLSRISICKMKKDYRKKY
RKYVRSRFQCIEDRNARLGEVSLNKRYTRLRIKEHRSQQEREQELLAIGKTKTCESPVSPIKMELLD
PDDEHSEPVHTVVFQGAAGIGKTLARKMMLDWSGLYQDRFDYLYIHCREVSLVTQRSLGDLIMSCC
PDPNPPIHKIVRKPSRILFLMDGFDELQGAFFDEHIGPLCTDWQKAERGDILLSSLIRKKLLPEASLLITT
RPVALEKQLHLLDHPRHVEILGFSEAKRKEYFFKYFSDEAQAARAFSLIQENEVLFMTCFIPLVCWIVCT
GLKQQMESGKSLAQTSKTTTAVYVFFLSLLQPRGGSQEHGLCAHLWGLCSLAADGIWNQKILFEESDLR
NHGLQKADVSAFLRMNLFQKEVDCEKFYSFIHMTFQEFFAAMYLLLEEEKEGRTNVPGRSLKLPDRDVTY
LLENYKFEKGYLIFVVRFLFGLVNQERTSYLEKLSCKISQQIRLELLKWIEVKAKAKKLQIQPSQLEL
FYCLYEMQEEDFVQRAMDYFPKIEINLSTRMDHMVSSFCIENCHRVESLSLGFHNMPKEEEEEKEGRH
LDMVQCVLPSSSHAACSHGLVNSHLTSSFCRGLFSVLSTSQSLTELDLSDNSLGDPMRVLCETLQHPGC
NIRRLWLGRCGLSHECCFDISLVLSSNQKLVLDLSDNALGDFGIRLLCVGLKHLLENLKLWLVSCCLT
SACQDLASVLSHSLTRLVYGENALGDSGVAILEKAKNPQCNLQKGLVNSGLTSVCCSALSSVLST
NQNLTHLYLRGNTLGDKIKLLCEGLLHPDCKLQVLELDNCNL TSHCCWDLSTLLTSSQSLRKL SLGNND
LGDLGVMMFCEVLKQQSCLLQNLGLSEMYFNYETKSALETLQEEKPELTVVFEPSP
```

TRTRPLE - GFP Tag - V

Restriction Sites:

SgfI-MluI

Cloning Scheme:


ACCN: NM_004895

ORF Size: 3108 bp

OTI Disclaimer: The molecular sequence of this clone aligns with the gene accession number as a point of reference only. However, individual transcript sequences of the same gene can differ through naturally occurring variations (e.g. polymorphisms), each with its own valid existence. This clone is substantially in agreement with the reference, but a complete review of all prevailing variants is recommended prior to use. [More info](#)

OTI Annotation: This clone was engineered to express the complete ORF with an expression tag. Expression varies depending on the nature of the gene.

Components: The ORF clone is ion-exchange column purified and shipped in a 2D barcoded Matrix tube containing 10ug of transfection-ready, dried plasmid DNA (reconstitute with 100 ul of water).

Reconstitution Method:

1. Centrifuge at 5,000xg for 5min.
2. Carefully open the tube and add 100ul of sterile water to dissolve the DNA.
3. Close the tube and incubate for 10 minutes at room temperature.
4. Briefly vortex the tube and then do a quick spin (less than 5000xg) to concentrate the liquid at the bottom.
5. Store the suspended plasmid at -20°C. The DNA is stable for at least one year from date of shipping when stored at -20°C.

RefSeq: [NM_004895.5](#)

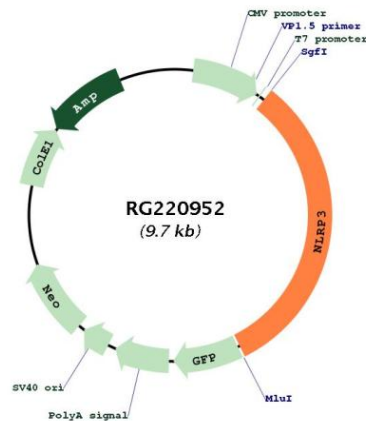
RefSeq Size: 4484 bp

RefSeq ORF: 3111 bp

Locus ID: 114548

UniProt ID:	<u>Q96P20</u>
Cytogenetics:	1q44
Domains:	LRR, LRR_RI, PAAD_DAPIN
Protein Families:	Druggable Genome
Protein Pathways:	NOD-like receptor signaling pathway
Gene Summary:	<p>This gene encodes a pyrin-like protein containing a pyrin domain, a nucleotide-binding site (NBS) domain, and a leucine-rich repeat (LRR) motif. This protein interacts with the apoptosis-associated speck-like protein PYCARD/ASC, which contains a caspase recruitment domain, and is a member of the NLRP3 inflammasome complex. This complex functions as an upstream activator of NF-kappaB signaling, and it plays a role in the regulation of inflammation, the immune response, and apoptosis. The SARS-CoV 3a protein, a transmembrane pore-forming viroporin, has been shown to activate the NLRP3 inflammasome via the formation of ion channels in macrophages. Mutations in this gene are associated with familial cold autoinflammatory syndrome (FCAS), Muckle-Wells syndrome (MWS), chronic infantile neurological cutaneous and articular (CINCA) syndrome, neonatal-onset multisystem inflammatory disease (NOMID), keratoendotheliitis fugax hereditaria, and deafness, autosomal dominant 34, with or without inflammation. Multiple alternatively spliced transcript variants encoding distinct isoforms have been identified for this gene. Alternative 5' UTR structures are suggested by available data; however, insufficient evidence is available to determine if all of the represented 5' UTR splice patterns are biologically valid. [provided by RefSeq, Aug 2020]</p>

Product images:



Circular map for RG220952