

Product datasheet for **RG220600**

c Abl (ABL1) (NM_005157) Human Tagged ORF Clone

Product data:

Product Type:	Expression Plasmids
Product Name:	c Abl (ABL1) (NM_005157) Human Tagged ORF Clone
Tag:	TurboGFP
Symbol:	c Abl
Synonyms:	ABL; BCR-ABL; bcr/abl; c-ABL; c-ABL1; CHDSKM; JTK7; p150; v-abl
Mammalian Cell Selection:	Neomycin
Vector:	pCMV6-AC-GFP (PS100010)
E. coli Selection:	Ampicillin (100 ug/mL)
ORF Nucleotide Sequence:	>RG220600 representing NM_005157 Red=Cloning site Blue=ORF Green=Tags(s)

TTTTGTAATACGACTCACTATAGGGCGGCCGGAATTCGTCGACTGGATCCGGTACCGAGGAGATCTGCC
GCC**CGATCGCC**

ATGTTGGAGATCTGCCTGAAGCTGGTGGGCTGCAATCCAAGAAGGGGCTGTCCTCGTCCTCCAGCTGTT
ATCTGGAAGAAGCCCTTCAGCGGCCAGTAGCATCTGACTTTGAGCCTCAGGGTCTGAGTGAAGCCGCTCG
TTGGAAGTCCAAGGAAAACCTTCTCGTGGACCCAGTAAAATGACCCCAACCTTTTCGTTGCAGTGTAT
GATTTTGTGGCCAGTGGAGATAACTCTAAGCATAACTAAAGGTGAAAAGCTCCGGGTCTTAGGCTATA
ATCACAATGGGGAATGGTGTGAAGCCCAAAACAAAATGGCCAAGGCTGGTCCCAAGCAACTACATCAC
GCCAGTCAACAGTCTGGAGAAACTCCTGGTACCATGGGCTGTGTCCCGCAATGCCGCTGAGTATCTG
CTGAGCAGCGGGATCAATGGCAGCTTCTTGGTGCCTGAGAGTGAAGCAGTCTGCCCAGAGGTCATCT
CGCTGAGATACGAAGGGAGGGTGTACCATTACAGGATCAACACTGCTTCTGATGGCAAGCTCTACGTCTC
CTCCGAGAGCCGCTTCAACACCCGGCCGAGTTGGTTCATCATATTCAACGGTGGCCGACGGGCTCATC
ACCACGCTCCATTATCCAGCCCCAAGCGCAACAAGCCCACTGTCTATGGTGTGTCCCCAACTACGACA
AGTGGGAGATGGAACGCACGGACATCACCATGAAGCACAAGCTGGGCGGGGGCCAGTACGGGGAGGTGTA
CGAGGGCGTGTGGAAGAAATACAGCCTGACGGTGGCCGTGAAGACCTTGAAGGAGGACACCATGGAGGTG
GAAGAGTTCTTGAAGAAGCTGCAGTCATGAAAGAGATCAAACACCCTAACCTGGTGCAGTCTTTGGGG
TCTGCACCCGGGAGCCCCGTTCTATATCACTGAGTTCATGACCTACGGGAACCTCCTGGACTACCT
GAGGGAGTGCAACCGGCAGGAGGTGAACGCCGTGGTGTGCTGTACATGGCCACTCAGATCTCGTAGCC
ATGGAGTACCTGGAGAAGAAAACCTTCCACAGAGATCTTGGTGCAGGAACTGCCTGGTAGGGGAGA
ACCACTTGGTGAAGGTAGCTGATTTGGCCTGAGCAGGTTGATGACAGGGGACACCTACACAGCCCATGC
TGGAGCCAAGTCCCATCAAATGGACTGCACCCGAGAGCCTGGCCTACAACAAGTTCCTCATCAAGTCC
GACGTCTGGGCATTTGGAGTATTGCTTTGGAAATTGCTACCTATGGCATGTCCCTTACCCGGGAATTG
ACCTGTCCAGGTGTATGAGCTGCTAGAGAAGGACTACCGCATGGAGCGCCAGAAGGCTGCCAGAGAA
GGTCTATGAACATGCGAGCATGTTGGCAGTGAATCCCTCTGACCGGCCCTCCTTTGCTGAAATCCAC



[View online »](#)

CAAGCCTTTGAAACAATGTTCCAGGAATCCAGTATCTCAGACGAAGTGGAAAAGGAGCTGGGAAACAAG
 CGGTCCGTGGGGCTGTGAGTACCTTGTGCAGGCCAGAGCTGCCACCAAGACGAGGACCTCCAGGAG
 AGCTGCAGAGCACAGAGACCACTGACGTGCCTGAGATGCCTCACTCCAAGGGCCAGGGAGAGAGCGAT
 CCTCTGGACCATGAGCCTGCCGTGTCTCCATTGCTCCCTCGAAAAGAGCGAGGTCCCCGGAGGGCGGCC
 TGAATGAAGATGAGCGCCTTCTCCCAAAGACAAAAGACCAACTGTTTCAGCGCCTTGATCAAGAAGAA
 GAAGAAGACAGCCCCAACCCCTCCCAAACGCAGCAGCTCCTTCCGGGAGATGGACGGCAGCCGGAGCGC
 AGAGGGCCGGCGAGGAAGAGGGCCGAGACATCAGCAACGGGGCACTGGCTTTCCACCCCTTGGACACAG
 CTGACCCAGCCAAGTCCCAAAGCCAGCAATGGGGCTGGGGTCCCAATGGAGCCCTCCGGGAGTCCGG
 GGGCTCAGGCTTCCGGTCTCCCACTGTGGAAGAAGTCCAGCACGCTGACCAGCAGCCGCTAGCCACC
 GGCGAGGAGGAGGGCGGTGGCAGCTCCAGCAAGCGCTTCTGCGCTTCTGCTCCGCTCCTGCGTCCCC
 ATGGGGCCAAAGGACAGGAGTGGAGTCACTCACGCTGCCTCGGGACTTGCAGTCCACGGGAAGACAGTT
 TGACTCGTCCACATTTGGAGGGCACAAAAGTGAGAAGCCGGCTTGCCTCGGAAGAGGGCAGGGGAGAAC
 AGGTCTGACCAGGTGACCCGAGGCACAGTAACGCCTCCCCCAGGCTGGTAAAAAAGATGAGGAAGCTG
 CTGATGAGGTCTTCAAAGACATCATGGAGTCCAGCCGGGCTCCAGCCGCCAACCTGACTCCAAAACC
 CCTCCGGCGCAGGTACCGTGGCCCTGCTCGGGCCTCCCCACAAGGAAGAAGCTGAAAGGGCAGT
 GCCTTAGGGACCCCTGCTGCAGCTGAGCCAGTACCCCCACCAGCAAAGCAGGCTCAGGTGACCCAGGGG
 GCACCAGCAAGGGCCCGCCGAGGAGTCCAGAGTGAAGGACACAAGCACTCCTCTGAGTCGCCAGGGAG
 GGACAAGGGGAAATTGTCCAGGCTCAAACCTGCCCGCCGCCCCACCAGCAGCCTTGCAGGGAAGGCT
 GGAGGAAAGCCCTCGCAGAGCCGAGCCAGGAGGGCGGGGAGGCAGTCTGGGCGCAAAGACAAAAG
 CCACGAGTCTGGTTGATGCTGTGAACAGTGACGCTGCCAAGCCAGCCAGCCGGGAGAGGGCCTCAAAA
 GCCCGTCTCCGGCCACTCAAAGCCACAGTCCGCCAAGCCGTCGGGGACCCCATCAGCCAGCCCC
 GTTCCCTCCACGTTGCCATCAGCATCCTCGGCCCTGGCAGGGGACCAGCCGTCTTCCACCGCCTTATCC
 CTCTCATATCAACCCGAGTGTCTTTCGAAAACCCGCCAGCCTCCAGAGCGGATCGCCAGCGGCCCAT
 CACCAAGGGCGTGGTCTTGGACAGCACCGAGGCGCTGTGCTCGCCATCTCTAGGAACCTCCGAGCAGATG
 GCCAGCCACAGCGCAGTCTGGAGGCGGCAAAAACCTCTACACGTTCTGCGTGAGCTATGTGGATTCCA
 TCCAGCAAATGAGGAACAAGTTTGCCTTCCGAGAGGCCATCAACAAACTGGAGAATAATCTCCGGGAGCT
 TCAGATCTGCCCGGCACAGCAGGCAGTGGTCCAGCGGCCACTCAGGACTTACGCAAGCTCCTCAGTTCC
 GTGAAGGAAATCAGTGACATAGTGCAGAGG

ACGCGTACGCGGCCGCTCGAG – GFP Tag – GTTTAA

Protein Sequence:

>RG220600 representing NM_005157
 Red=Cloning site Green=Tags(s)

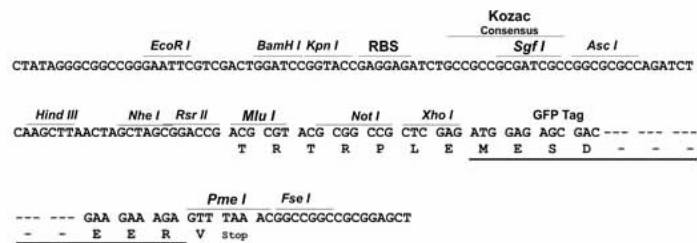
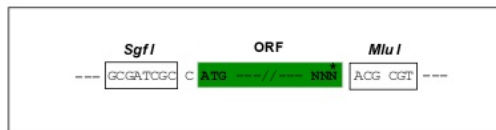
MLEICLKLVGCKSKKGLSSSSCYLEEALQRPVASFEPQGLSEARWNSKENLLAGPSENDPNLFVALY
 DFVASGDNTLSITKGEKLRVLGYNHNGEWCEAQTKNGQGWVPSNYITPVNSLEKHSWYHGPVSRNAEYL
 LSSGINGSFLVRESESSPGQRSISLRYEGRVYHYRINTASDGKLYVSSERFNTLAELVHHHSTVADGLI
 TTLHYPAPKRNKPTVYGVSPNYDKWEMERTDITMKHKLGGGQYGEVYEGVWKKYSLTVAVKTLKEDTMEV
 EEFLKEAAVMKEIKHPNLVQLLGVCTREPPFYIITEFMTYGNLLDYLRECNRQEVNAVVLlyMATQISSA
 MEYLEKKNFIHRDLAARNCLVGENHLVKVADFGLSRLMTGDTYTAHAGAKFPIKWTAPESLAYNKF SIKS
 DVWAFGVLLWEIATYGMSPYPGIDL SQVYELLEKDYRMERPEGCPEKVYELMRACQWNPDRPSFAEIH
 QAFETMFQESSISDEVEKELGKQVIRGAVSTLLQAPELPTKTRTSRRAAEHRDITDVPMPHSHKGGQESD
 PLDHEPAVSPLLPRKERGPPEGLNEDERLLPKDKKTNLFSALIKKKKTAPTPPKRSSSFREMDGQPER
 RGAGEEGRDISNGALAF TPLDTADPAKSPKPSNGAGVPNGALRESGGSGFRSPHLWKKSSLTSSRLAT
 GEEEGGSSSKRFLRSCSASCVPHGAKDTEWRSVTLPRDLQSTGRQFDSSTFGGHKSEKPALPRKRAGEN
 RSDQVTRGTVTPPPRLVKKNEEADEVFKDIMESSPGSSPPNLTPKPLRRQVTVAPASGLPHKKEEAGKGS
 ALGTAAAEPVTPTSKAGSGAPGGTSGPAEESRVRHKSSESPPGRDKGKLSRLKPAPPPPPAASAGKA
 GKPSQSPSQEAAGEAVLGAKTKATSLVDVANSDAAKPSQPGEGLKPKVLPATPKPQSAKPSGTP.TSPAP
 VPSTLPSASSALAGDQPSSTAFIPLISTRVSLRKTQPPERIASGAIKGVVLDSTEALCLAISRNSEQM
 ASHAVLEAGKNLYTFCVSYVDSIQQMRNKF AFREAINKLENNLRELQICPATAGSGPAATQDFSLLSS
 VKEISDIVQR

TRTRPLE – GFP Tag – V

Restriction Sites: SgfI-MluI

Cloning Scheme:

Cloning sites used for ORF Shuttling:



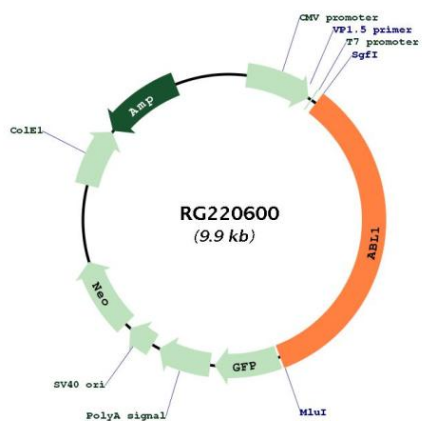
ACCN: NM_005157

ORF Size: 3390 bp

OTI Disclaimer: The molecular sequence of this clone aligns with the gene accession number as a point of reference only. However, individual transcript sequences of the same gene can differ through naturally occurring variations (e.g. polymorphisms), each with its own valid existence. This clone is substantially in agreement with the reference, but a complete review of all prevailing variants is recommended prior to use. [More info](#)

OTI Annotation:	This clone was engineered to express the complete ORF with an expression tag. Expression varies depending on the nature of the gene.
Components:	The ORF clone is ion-exchange column purified and shipped in a 2D barcoded Matrix tube containing 10ug of transfection-ready, dried plasmid DNA (reconstitute with 100 ul of water).
Reconstitution Method:	<ol style="list-style-type: none">1. Centrifuge at 5,000xg for 5min.2. Carefully open the tube and add 100ul of sterile water to dissolve the DNA.3. Close the tube and incubate for 10 minutes at room temperature.4. Briefly vortex the tube and then do a quick spin (less than 5000xg) to concentrate the liquid at the bottom.5. Store the suspended plasmid at -20°C. The DNA is stable for at least one year from date of shipping when stored at -20°C.
RefSeq:	NM_005157.6
RefSeq Size:	5384 bp
RefSeq ORF:	3393 bp
Locus ID:	25
UniProt ID:	P00519
Cytogenetics:	9q34.12
Protein Families:	Druggable Genome, Protein Kinase, Transcription Factors
Protein Pathways:	Axon guidance, Cell cycle, Chronic myeloid leukemia, ErbB signaling pathway, Neurotrophin signaling pathway, Pathogenic Escherichia coli infection, Pathways in cancer, Viral myocarditis
Gene Summary:	This gene is a protooncogene that encodes a protein tyrosine kinase involved in a variety of cellular processes, including cell division, adhesion, differentiation, and response to stress. The activity of the protein is negatively regulated by its SH3 domain, whereby deletion of the region encoding this domain results in an oncogene. The ubiquitously expressed protein has DNA-binding activity that is regulated by CDC2-mediated phosphorylation, suggesting a cell cycle function. This gene has been found fused to a variety of translocation partner genes in various leukemias, most notably the t(9;22) translocation that results in a fusion with the 5' end of the breakpoint cluster region gene (BCR; MIM:151410). Alternative splicing of this gene results in two transcript variants, which contain alternative first exons that are spliced to the remaining common exons. [provided by RefSeq, Aug 2014]

Product images:



Circular map for RG220600