

## Product datasheet for **RG220440**

### Huntingtin Associated Protein 1 (HAP1) (NM\_001079871) Human Tagged ORF Clone

#### Product data:

Product Type:	Expression Plasmids
Product Name:	Huntingtin Associated Protein 1 (HAP1) (NM_001079871) Human Tagged ORF Clone
Tag:	TurboGFP
Symbol:	HAP1
Synonyms:	HAP2; hHLP1; HIP5; HLP
Mammalian Cell Selection:	Neomycin
Vector:	pCMV6-AC-GFP (PS100010)
E. coli Selection:	Ampicillin (100 ug/mL)



[View online »](#)

**ORF Nucleotide Sequence:**

>RG220440 representing NM\_001079871  
 Red=Cloning site Blue=ORF Green=Tags(s)

TTTTGTAATACGACTCACTATAGGGCGGCCGGAATTCGTCGACTGGATCCGGTACCGAGGAGATCTGCC  
 GCC**CGCATCGCC**

ATGCGCCCGAAGAGGTTGGCCGGTGTGCGCGGGGACCGGCTCGGACCCGGGGACCCAGCAGCACTCA  
 CCTGTGCACCTTCGCCCTCAGCCAGTCCCGCTCCGGAGCCCTCTGCGCAGCCGCAGGCACGGGGCACTGG  
 ACAGAGAGTAGGATCCCCGAGCCACTCTGGATCCAGTTCCTCTCGGAAGCCCGACCGGAGCTCGCCCG  
 GCCTCGGAGGCTGGAGCCAAGGCAGGAGCCCGCGCCCGTCCGCATTCTCGGCCATCCAAGGGGATGTCC  
 GGTCTATGCCGACAATTCGGACGCGCCGTGGACCCGCTTCGTATTCCAAGGGCCGTTTGGTTCCCGGGC  
 CACTGGCCGGGGACTGGAAGGCAGCGGGCATCTGGAAGACGCCAGCCCTACGTTGGCCGGCGACCC  
 GGGGTGTCCGGCCCTGAGCGCGCCGCTTTATTCGGGAGCTGGAGGAAGCACTGTGTCCTAACCTACCTC  
 CGCCAGTCAAAAAGATCACCCAGGAAGACGTCAAAGTGATGTTATATTTGCTGGAGGAGCTTCTCCACC  
 TGCTCTGGGAGAGCGTTACCTATGGGATGGTCTGCAGAGAGAGAGGACCTGAACACTGCAGCTCGCATC  
 GGCCAGTCCCTGGTGAACAGAACAGTGTTCGATGGAGGAGAAGCAAGCTGGAAGCCCTGCTGGGCT  
 CAGCCAAGGAGGAGATTTTATACCTCAGACACCAGGTGAACTTGCGGGATGAGCTCCTCCAGCTCTACTC  
 AGATTCTGATGAGGAGGATGAGGATGAAGAAGAGGAGGAGGAAGAAAAGGAGGCAGAAGAGGAACAGGAA  
 GAAGAAGAAGCAGAGGAAGACCTGCAGTGTGCTCATCCCTGTGATGCCCTAAGCTGATTTTCGAGGAGG  
 CATTGCTGCACCAGCACCCTGCCACAGCTGGAAGCCTTGCAAGGAGAAGCTGAGGCTGCTGGAGGAGGA  
 GAATCATCAGCTGAGAGAAGAGGCTCTCAACTCGACACTCTTGAGGATGAGGAACAGATGCTCATTCTG  
 GAGTGTGTGGAGCAGTTTTCGGAGGCCAGCCAACAGATGGCTGAGCTGTCCGAGGTGCTGGTGTCTCAGGC  
 TGGAAAACATGAACGGCAGCAGCAGGAGTCCGCTCGGCTGCAGGCCAGGTGCTGAAGCTGCAGCAGCG  
 CTGCCGGATGGAGACTTTCCTGGTTCCAGGAGACGCTGGCTGAGGAGCTCAGAAGCTCTCTAAGGAGG  
 ATGATCTCAGACCCTGTGATTTTATGGAGAGGAATTATGAGATGCCAGAGGGGACACATCCAGCCTAA  
 GGTATGATTTTCGCTACAGTGAAGATCGAGAGCAGGTGCGGGGGTTTGGAGCTGAGGAAGGGTTGATGCT  
 GGCAGCGGATATCATGCGGGGGGAAGATTTACGCCTGCGGAGGAGTTCTGTGCCCCAGGAGGAGCTGGGG  
 GCTGCCAAGAAGGTGCCGGCTGAGGAAGGGGTGATGGAAGAGGCAGAGCTGGTGTGAGAGGAGACCAGG  
 GCTGGGAGGAGGTGAACTGGAGCTGGATGAGGCAACCGGATGAACGTGGTACATCAGCCCTGGAGGC  
 CAGCGGCTTGGCCCTTACACCTGGACATGAATTATGCTCTCCAGCAGCTGGCCAACTGGCAAGATGCC  
 CATTACAGGCGCAGCTGAGGTGGAAGATGCTCCAGAAAGGTGAGTGCCCCACGGGGCCCTCCCTGCCG  
 CCAGCCGGACAAGCTGCAGATCGTCGTGCCGA

**ACGCGTACGCGGCCGCTCGAG - GFP Tag - GTTTAA**

**Protein Sequence:**

>RG220440 representing NM\_001079871  
 Red=Cloning site Green=Tags(s)

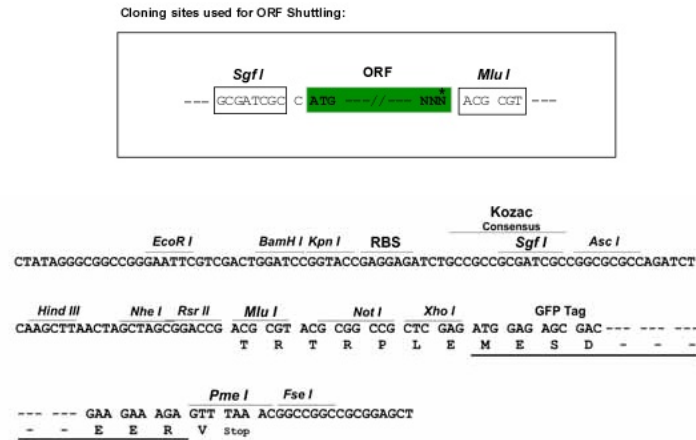
MRPKRLGRCCAGSRLGPGDPAALTCAPSPSASPAPESAQPQARGTGQRVGSRATSGSQFLSEARTGARP  
 ASEAGAKAGARRPSAFSAIQGDVRSMPDNDAPWTRFVFGPFGSRATGRGTGKAAGIWKTPAAAYVGRRP  
 GVSPPERAAFIREEALCPNLPPPVKKITQEDVKVMLYLLEELLPPVWESVTYGMVLQRERDLNTAARI  
 GQSLVKQNSVLMEEENSKLEALLGSAKEEILYLRHQVNLRDELLQLYSDSDEEDEDEEEEEKEAEEEQE  
 EEEAEEDLQCAHPCDAPKLISQEALLHQHHCPLQLEALQEKLRLLLEENHQLREEASQLDLEDEEQMLIL  
 ECVEQFSEASQQMAELSEVLVLRLENYERQQQEVARLQAQVCLKLQQRRCMETLPGFQETLAEELRTSLRR  
 MISDPVYFMERNYEMPRGDTSSLRYDFRYSEDREQVRGFEAEGLMLAADIMRGEDFTPAAEFVPQEELG  
 AAKKVPAAEEGVMEAEELVSEETEGWEEVELELDEATRMNVVTSALEASGLGPSHLDMNYVLQQLANWQDA  
 HYRRQLRWKMLQKGECPHGALPAASRTSCRSSCR

**TRTRPLE - GFP Tag - V**

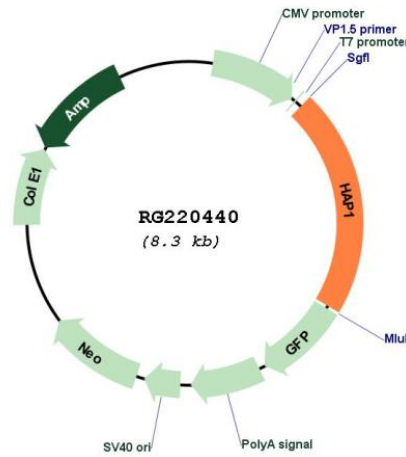
**Restriction Sites:**

Sgfl-Mlul

## Cloning Scheme:



## Plasmid Map:



ACCN: NM\_001079871  
ORF Size: 1782 bp

<b>OTI Disclaimer:</b>	The molecular sequence of this clone aligns with the gene accession number as a point of reference only. However, individual transcript sequences of the same gene can differ through naturally occurring variations (e.g. polymorphisms), each with its own valid existence. This clone is substantially in agreement with the reference, but a complete review of all prevailing variants is recommended prior to use. <a href="#">More info</a>
<b>OTI Annotation:</b>	This clone was engineered to express the complete ORF with an expression tag. Expression varies depending on the nature of the gene.
<b>Components:</b>	The ORF clone is ion-exchange column purified and shipped in a 2D barcoded Matrix tube containing 10ug of transfection-ready, dried plasmid DNA (reconstitute with 100 ul of water).
<b>Reconstitution Method:</b>	<ol style="list-style-type: none"><li>1. Centrifuge at 5,000xg for 5min.</li><li>2. Carefully open the tube and add 100ul of sterile water to dissolve the DNA.</li><li>3. Close the tube and incubate for 10 minutes at room temperature.</li><li>4. Briefly vortex the tube and then do a quick spin (less than 5000xg) to concentrate the liquid at the bottom.</li><li>5. Store the suspended plasmid at -20°C. The DNA is stable for at least one year from date of shipping when stored at -20°C.</li></ol>
<b>RefSeq:</b>	<a href="#">NM_001079871.1</a> , <a href="#">NP_001073340.1</a>
<b>RefSeq Size:</b>	3869 bp
<b>RefSeq ORF:</b>	1785 bp
<b>Locus ID:</b>	9001
<b>UniProt ID:</b>	<a href="#">P54257</a>
<b>Cytogenetics:</b>	17q21.2
<b>Protein Pathways:</b>	Huntington's disease
<b>Gene Summary:</b>	Huntington's disease (HD), a neurodegenerative disorder characterized by loss of striatal neurons, is caused by an expansion of a polyglutamine tract in the HD protein huntingtin. This gene encodes a protein that interacts with huntingtin, with two cytoskeletal proteins (dynactin and pericentriolar autoantigen protein 1), and with a hepatocyte growth factor-regulated tyrosine kinase substrate. The interactions with cytoskeletal proteins and a kinase substrate suggest a role for this protein in vesicular trafficking or organelle transport. Several alternatively spliced transcript variants encoding different isoforms have been described for this gene. [provided by RefSeq, Jul 2008]