

## Product datasheet for **RG217803**

### CHD2 (NM\_001042572) Human Tagged ORF Clone

#### Product data:

|                           |  |
|---------------------------|--|
| Product Type:             | Expression Plasmids                        |
| Product Name:             | CHD2 (NM_001042572) Human Tagged ORF Clone |
| Tag:                      | TurboGFP                                   |
| Symbol:                   | CHD2                                       |
| Synonyms:                 | DEE94; EEOC                                |
| Mammalian Cell Selection: | Neomycin                                   |
| Vector:                   | pCMV6-AC-GFP (PS100010)                    |
| E. coli Selection:        | Ampicillin (100 ug/mL)                     |



[View online »](#)

**ORF Nucleotide Sequence:**

>RG217803 representing NM\_001042572  
 Red=Cloning site Blue=ORF Green=Tags(s)

TTTTGTAATACGACTCACTATAGGGCGGCCGGAATTCGTCGACTGGATCCGGTACCGAGGAGATCTGCC  
 GCC**GCGATCGCC**

ATGATGAGAAATAAGGACAAAAGCCAAGAGGAGGACAGTTCGCTACACAGCAATGCATCGAGTCACTCAG  
 CCTCTGAAGAAGCTTCGGGTTCCAGACTCAGGCAGTCAGTCGGAAAAGTGAGCAGGGAAGTGATCCAGGAAG  
 TGGACATGGCAGCGAGTCGAACAGCAGCTCTGAATCTTCTGAGAGTCAGTCGGAATCTGAGAGCGAATCA  
 GCAGGTTCCAAATCCCAGCCAGTCTCCAGAAGCCAAAGAGAAGCCAGCCTCTAAGAAGGAACGGATAG  
 CTGATGTGAAGAAGATGTGGGAAGAATATCCTGATGTTTATGGGGTCAGGCGGTCAAACCGAAGCAGACA  
 AGAACCATCGCGATTTAATATTAAGGAAGAGGCAAGTAGCGGGTCTGAGAGTGGGAGCCAAAAAGAAGA  
 GGCCAGAGGCAGCTGAAAAACAAGAAAAATGAAACAGGAACCCCTCAGAAGATGAACAGGAACAAGGCA  
 CCAGTGCAGAGAGTGAGCCAGAACAAAAAAGTAAAAGCCAGAAGACCTGTCCCAGAAGAACAGTGCC  
 CAAACCTCGTGTAAAAAGCAGCCGAAGACTCAGCGTGGAAAGAGAAAAAAGCAAGATTCTCTGATGAG  
 GATGATGATGATGACGAAGCTCCAAAAGGCAGACTCGTCGAAGAGCGGCTAAAAACGTTAGTTACAAGG  
 AAGATGATGACTTTGAGACTGACTCAGATGATCTCATTGAAATGACTGGAGAAGGAGTTGATGAACAGCA  
 AGATAATAGTGAAACTATTGAAAAGTCTTAGATTCAAGACTGGGAAAAGAAAGGACCCACTGGAGCATCT  
 ACTACTGTATATGCGATTGAAGCTAATGGCGACCCTAGTGGTGACTTTGACACTGAAAAGGATGAAGGTG  
 AAATCCAGTACCTCATCAAGTGAAGGGTGGTCTTACATCCACAGCACATGGGAGAGTGAAGAATCCTT  
 ACAGCAACAGAAAGTGAAGGGCCTAAAAAACTAGAGAACTTCAAGAAAAAGAGGACGAAATCAAAACA  
 TGGTTAGGGAAGTTTCTCCTGAAGATGTAGAATATTTCAATTGCCAACAGGAGCTGGCTCAGAGTTGA  
 ATAAACAGTATCAGATAGTAAAGAGTAATAGCTGTGAAGACAAGTAAATCTACATTGGTCAAACAGA  
 TTTTCCAGCTCATAGTCGGAAGCCGGCACCCCTCAAATGAGCCGAATATCTATGTAATGGATGGGACTC  
 CCCTATTCAGAGTGTAGCTGGGAAGATGAAGCCCTCATTGAAAAGAAATCCAGAATTGCATTGACAGCT  
 TCCACAGTAGGAACAACCTAAAAACCTCCAACAAGAGAATGCAAGGCCCTGAAGCAGAGACCACGATT  
 TGTAGCTTTAAAGAAACAACCTGCATATTTAGGAGGGGAGAATCTGGAACCTCGAGATTATCAGCTAGAA  
 GGTCTAAACTGGCTAGCTCATTCTGGTGCAAG

**ACGCGTACGCGGCCGCTCGAG** – GFP Tag – GTTTAA

**Protein Sequence:**

>RG217803 representing NM\_001042572  
 Red=Cloning site Green=Tags(s)

MMRNKDKSQEEDSSLHSNASSHSASEEASGSDSGSQSESEQSDPGSGHGSESNSSSESSESQSESESES  
 AGSKSQPVLPAAKEKPASKKERIADVKKMWEYYPDVYGVRRSNRSRQEPSRFNIKEEASSGSESGSPKRR  
 GQRQLKKQEKWKQEPSEDEQEQTSAESEPEQKKVKARRPVPRRTVPKPRVKKQPKTQRGKRKKQDSSDE  
 DDDDDEAPKRQTRRRRAAKNVSYKEDDDFEITDSDLIEMTGEGVDEQQDNSETIEKVLDSRLGKKGATGAS  
 TTYAIEANGDPSGDFDTEKDEGEIQYLKWKWGSYIHSTWESESLQQQKVKGLKLENFKKKEDEIKQ  
 WLGKVPEDVEYFNCQQLASELNKQYQIVERVIAVKTSKSTLGQTDPAHSRKPAPSNEPEYLCKWMGL  
 PYSECSWEDEALIGKKFQNCIDSFHSRNNSKTIPTRECKALKQRPRFVALKKQPAYLGGENLELRDYQLE  
 GLNWLHWSWCK

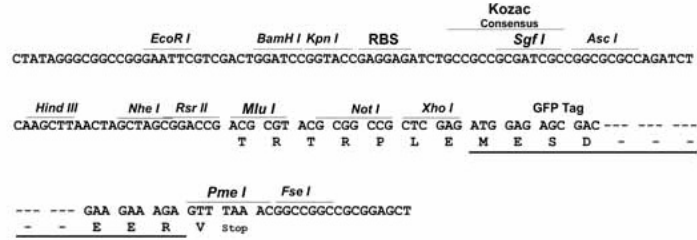
**TRTRPLE** – GFP Tag – V

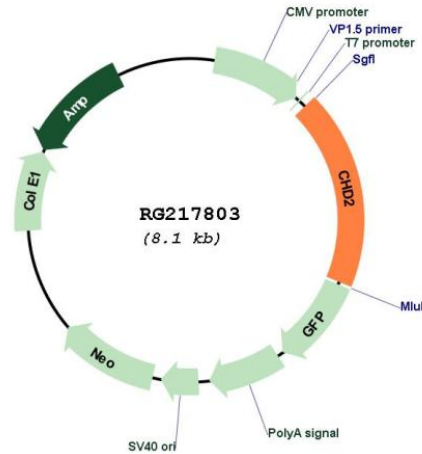
**Restriction Sites:**

Sgfl-MluI

Cloning Scheme:

Cloning sites used for ORF Shutting:



**Plasmid Map:**


|                        |  |
|------------------------|--|
| <b>ACCN:</b>           | NM_001042572   |
| <b>ORF Size:</b>       | 1503 bp  |
| <b>OTI Disclaimer:</b> | The molecular sequence of this clone aligns with the gene accession number as a point of reference only. However, individual transcript sequences of the same gene can differ through naturally occurring variations (e.g. polymorphisms), each with its own valid existence. This clone is substantially in agreement with the reference, but a complete review of all prevailing variants is recommended prior to use. <a href="#">More info</a> |
| <b>OTI Annotation:</b> | This clone was engineered to express the complete ORF with an expression tag. Expression varies depending on the nature of the gene.   |
| <b>Components:</b>     | The ORF clone is ion-exchange column purified and shipped in a 2D barcoded Matrix tube containing 10ug of transfection-ready, dried plasmid DNA (reconstitute with 100 ul of water).   |

**Reconstitution Method:**

1. Centrifuge at 5,000xg for 5min.
2. Carefully open the tube and add 100ul of sterile water to dissolve the DNA.
3. Close the tube and incubate for 10 minutes at room temperature.
4. Briefly vortex the tube and then do a quick spin (less than 5000xg) to concentrate the liquid at the bottom.
5. Store the suspended plasmid at -20°C. The DNA is stable for at least one year from date of shipping when stored at -20°C.

**RefSeq:** [NM\\_001042572.3](#)

**RefSeq Size:** 2395 bp

**RefSeq ORF:** 1506 bp

**Locus ID:** 1106

**UniProt ID:** [O14647](#)

**Cytogenetics:** 15q26.1

**Protein Families:** Transcription Factors

**Gene Summary:** The CHD family of proteins is characterized by the presence of chromo (chromatin organization modifier) domains and SNF2-related helicase/ATPase domains. CHD genes alter gene expression possibly by modification of chromatin structure thus altering access of the transcriptional apparatus to its chromosomal DNA template. Alternatively spliced transcript variants encoding distinct isoforms have been found for this gene. [provided by RefSeq, Jul 2008]