

Product datasheet for **RG217084**

HLAF (HLA-F) (NM_018950) Human Tagged ORF Clone

Product data:

Product Type:	Expression Plasmids
Product Name:	HLAF (HLA-F) (NM_018950) Human Tagged ORF Clone
Tag:	TurboGFP
Symbol:	HLAF
Synonyms:	CDA12; HLA-5.4; HLA-CDA12; HLAF
Mammalian Cell Selection:	Neomycin
Vector:	pCMV6-AC-GFP (PS100010)
E. coli Selection:	Ampicillin (100 ug/mL)
ORF Nucleotide Sequence:	>RG217084 representing NM_018950 Red=Cloning site Blue=ORF Green=Tags(s)

TTTTGTAATACGACTCACTATAGGGCGGCCGGAATTCGTCGACTGGATCCGGTACCGAGGAGATCTGCC
GCC**CGATCGCC**

ATGGCGCCCCGAAGCCTCCTCCTGCTGCTCTCAGGGCCCTGGCCCTGACCGATACTTGGCGGGCTCCC
ACTCCTTGAGGTATTTTCAGCACCGCTGTGTGCGGCCCGGCCGCGGGGAGCCCCGCTACATCGCCGTGGA
GTACGTAGACGACACGCAATTCCTGCGGTTTCGACAGCGACGCCGCGATTCCGAGGATGGAGCCGCGGGAG
CCGTGGGTGGAGCAAGAGGGGCCGAGTATTGGGAGTGGACCACAGGGTACGCCAAGGCCAACGCACAGA
CTGACCGAGTGGCCCTGAGGAACCTGCTCCGCCGCTACAACCAGAGCGAGGCTGGGTCTCACACCCTCCA
GGGAATGAATGGCTGCGACATGGGGCCCGACGGACGCTCCTCCGCGGGTATCACCAGCACGCGTACGAC
GGCAAGGATTACATCTCCCTGAACGAGGACCTGCGCTCCTGGACCGCGCGGACACCGTGGCTCAGATCA
CCCAGCGCTTCTATGAGGCAGAGGAATATGCAGAGGAGTTCAGGACCTACCTGGAGGGCGAGTGCCTGGA
GTTGCTCCGCAGATACTTGGAGAATGGGAAGGAGACGCTACAGCGCGCAGATCCTCCAAAGGCACACGTT
GCCACCACCCCATCTCTGACCATGAGGCCACCCTGAGGTGCTGGGCCCTGGGCTTCTACCTGCGGAGA
TCACGCTGACCTGGCAGCGGATGGGGAGGAACAGACCCAGGACACAGAGCTTGTGGAGACCAGGCTGC
AGGGATGGAACCTTCCAGAAGTGGGCCGCTGTGGTGGTGCCTTCTGGAGAGAACAGAGATACACATGC
CATGTGCAGCACGAGGGCTGCCAGCCCTCATCCTGAGATGGGAGCAGTCTCCCAGCCACCATCC
CCATCGTGGGCATCGTTGCTGGCCTTGTGTCTTGGAGCTGTGGTCACTGGAGCTGTGGTCTGCTGCTGT
GATGTGGAGGAAGAAGAGCTCAGATAGAAACAGAGGGAGCTACTCTCAGGCTGCAGTCACTGACAGTGC
CAGGGCTCTGGGTGTCTCTCACAGCTAATAAAGTG

AG**CGGACCG**ACGCGTACGCGGCCGCTCGAG - GFP Tag - GTTTAA



[View online »](#)

Protein Sequence: >RG217084 representing NM_018950
Red=Cloning site Green=Tags(s)

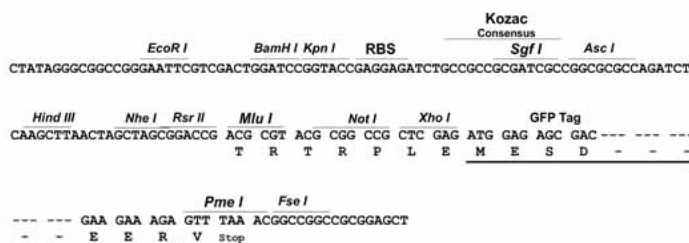
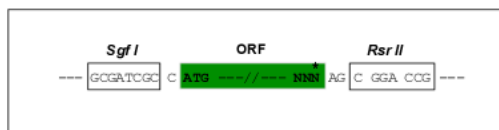
MAPRSLLLLLSGALALDTWAGSHSLRYFSTAVSRPGRGEPRIYAVEYVDDTQFLRFDSDAAI PRMEPRE
PWVEQEGPQYWEWTTGYAKANAQTDRVALRNLLRRYNQSEAGSHTLQGMNGCDMGPDRLLRQYHQHAYD
GKDYISLNEDLRSWTAADTVAQITQRFYEAEEYAEFRTYLEGECELELLRRYLENGKETLQRADPPKAHV
AHHPI SDHEATLRWALGFYPAEITLTWQRDGEETQDTEL VETRPAGDGTFFQKWA AVVVP SGEEQRYTC
HVQHEGLPQPLILRWEQSPQPTIPVIGIVAGLVVLGAVVTGAVVAAMWRKKSSDRNRGSYSQAAVTDSA
QSGSVSLTANKV

SGPTRRRLE - GFP Tag - V

Restriction Sites: SgfI-RsrII

Cloning Scheme:

Cloning sites used for ORF Shuttling:



ACCN: NM_018950

ORF Size: 1086 bp

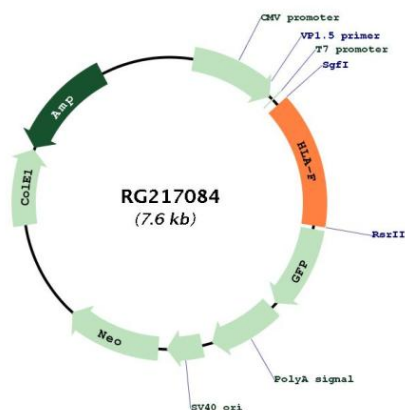
OTI Disclaimer: Due to the inherent nature of this plasmid, standard methods to replicate additional amounts of DNA in E. coli are highly likely to result in mutations and/or rearrangements. Therefore, OriGene does not guarantee the capability to replicate this plasmid DNA. Additional amounts of DNA can be purchased from OriGene with batch-specific, full-sequence verification at a reduced cost. Please contact our customer care team at custsupport@origene.com or by calling 301.340.3188 option 3 for pricing and delivery.

The molecular sequence of this clone aligns with the gene accession number as a point of reference only. However, individual transcript sequences of the same gene can differ through naturally occurring variations (e.g. polymorphisms), each with its own valid existence. This clone is substantially in agreement with the reference, but a complete review of all prevailing variants is recommended prior to use. [More info](#)

OTI Annotation: This clone was engineered to express the complete ORF with an expression tag. Expression varies depending on the nature of the gene.

Components:	The ORF clone is ion-exchange column purified and shipped in a 2D barcoded Matrix tube containing 10ug of transfection-ready, dried plasmid DNA (reconstitute with 100 ul of water).
Reconstitution Method:	<ol style="list-style-type: none">1. Centrifuge at 5,000xg for 5min.2. Carefully open the tube and add 100ul of sterile water to dissolve the DNA.3. Close the tube and incubate for 10 minutes at room temperature.4. Briefly vortex the tube and then do a quick spin (less than 5000xg) to concentrate the liquid at the bottom.5. Store the suspended plasmid at -20°C. The DNA is stable for at least one year from date of shipping when stored at -20°C.
RefSeq:	<u>NM_018950.1</u> , <u>NP_061823.1</u>
RefSeq Size:	1188 bp
RefSeq ORF:	1041 bp
Locus ID:	3134
UniProt ID:	<u>P30511</u>
Cytogenetics:	6p22.1
Domains:	MHC_I, ig, IGc1
Protein Families:	Transmembrane
Protein Pathways:	Allograft rejection, Antigen processing and presentation, Autoimmune thyroid disease, Cell adhesion molecules (CAMs), Endocytosis, Graft-versus-host disease, Type I diabetes mellitus, Viral myocarditis
Gene Summary:	This gene belongs to the HLA class I heavy chain paralogues. It encodes a non-classical heavy chain that forms a heterodimer with a beta-2 microglobulin light chain, with the heavy chain anchored in the membrane. Unlike most other HLA heavy chains, this molecule is localized in the endoplasmic reticulum and Golgi apparatus, with a small amount present at the cell surface in some cell types. It contains a divergent peptide-binding groove, and is thought to bind a restricted subset of peptides for immune presentation. This gene exhibits few polymorphisms. Multiple transcript variants encoding different isoforms have been found for this gene. These variants lack a coding exon found in transcripts from other HLA paralogues due to an altered splice acceptor site, resulting in a shorter cytoplasmic domain. [provided by RefSeq, Jul 2008]

Product images:



Circular map for RG217084