

Product datasheet for **RG216939**

CD22 (NM_001771) Human Tagged ORF Clone

Product data:

Product Type:	Expression Plasmids
Product Name:	CD22 (NM_001771) Human Tagged ORF Clone
Tag:	TurboGFP
Symbol:	CD22
Synonyms:	SIGLEC-2; SIGLEC2
Mammalian Cell Selection:	Neomycin
Vector:	pCMV6-AC-GFP (PS100010)
E. coli Selection:	Ampicillin (100 ug/mL)



[View online »](#)

ORF Nucleotide Sequence:

>RG216939 representing NM_001771
 Red=Cloning site Blue=ORF Green=Tags(s)

TTTTGTAATACGACTCACTATAGGGCGGCCGGGAATTCGTCGACTGGATCCGGTACCGAGGAGATCTGCC
 GCC**CGGATCGCC**

ATGCATCTCCTCGGCCCTGGCTCCTGCTCCTGGTTCTAGAATACTTGGCTTCTCTGACTCAAGTAAAT
 GGGTTTTTGGACACCCTGAAACCCTCTACGCCTGGGAGGGGGCCTGCGTCTGGATCCCCTGCACCTACAG
 AGCCCTAGATGGTGACCTGGAAAAGCTTCACTCTGTTCCACAATCCTGAGTATAACAAGAACACCTCGAAG
 TTTGATGGGACAAGACTCTATGAAAGCACAAGGATGGGAAGGTTCTTCTGAGCAGAAAAGGTGCAAT
 TCCTGGGAGACAAGAATAAGAACTGCACACTGAGTATCCACCCGGTGCACCTCAATGACAGTGGTCACT
 GGGGCTGAGGATGGAGTCCAAGACTGAGAAATGGATGGAACGAATACACCTCAATGTCTCTGAAAGGCC
 TTTCCACCTCATATCCAGCTCCCTCCAGAAATCAAGAGTCCCAGGAAGTCACTCTGACCTGCTTGTCTGA
 ATTTCTCCTGCTATGGGTATCCGATCCAATTGCAGTGGCTCCTAGAGGGGGTTCCAATGAGGCGAGTGC
 TGTACCTCGACCTCCTTGACCATCAAGTCTGTCTTACCCGGAGCGAGCTCAAGTTCTCCACAGTGG
 AGTCACCATGGGAAGATTGTGACCTGCCAGCTTCAAGATGCAGATGGGAAGTTCCCTCCAATGACACGG
 TGCAGCTGAACGTGAAGCACACCCCGAAGTTGGAGATCAAGGTCACCTCCAGTGTGCCATAGTGAGGGA
 GGGGACTCTGTGACCATGACCTGCGAGGTCAGCAGCAGCAACCCGGAGTACACGACGGTATCCTGGCTC
 AAGGATGGGACCTCGCTGAAGAAGCAGAATACATTCACGCTAAACCTGCGCGAAGTGACCAAGGACCAGA
 GTGGGAAGTACTGCTGTCAAGTCTCCAATGACGTGGGCCCGGGAAGTCCGGAAGAAGTGTCTGCAAGT
 GCAGTATGCCCGGAACCTTCCACGGTTCAGATCCTCCACTACCCGGCTGTGGAGGAAGTCAAGTCGAG
 TTTCTTTGCATGTCACTGGCCAATCCTCTTCCAACAAATTACACGTGGTACCACAATGGGAAAGAAATGC
 AGGGAAGGACAGAGGAGAAAGTCCACATCCCAAGATCCTCCCTGGCACGCTGGGACTTATTCCTGTGT
 GGCAGAAAACATTCTTGGTACTGGACAGAGGGGCCCGGAGCTGAGCTGGATGTCCAGTATCCTCCCAAG
 AAGGTGACCACAGTGATTCAAAAACCCATGCCGATTCGAGAAGGAGACACAGTGACCCCTTCTGTAAC
 ACAATTCAGTAACCCAGTGTTACCCGGTATGAATGGAACCCCATGGCGCTGGGAGGAGCCATCGCT
 TGGGGTGTGAAGATCCAAAACGTTGGCTGGGACAACACAACCATCGCTGCGCACGTTGTAATAGTTGG
 TGCTCGTGGGCCCTCCCTGTGCGCTGAATGTCCAGTATGCCCCCGAGACGTGAGGGTCCGAAAAATCA
 AGCCCTTTCCGAGATTCCTCTGGAACTCGGTGACCTCCAATGTGACTTCTCAAGCAGCCACCCCAA
 AGAAGTCCAGTCTTCTGGGAGAAAAATGGCAGGCTTCTGGGAAAGAAAGCCAGCTGAATTTGACTCC
 ATCTCCCAAGAGATGCTGGGAGTTACAGCTGCTGGGTGAACAACCTCCATAGGACAGACAGCGTCAAGG
 CCTGGACACTTGAAGTGTGTATGCACCCAGGAGGCTGCGTGTGTCCATGAGCCCGGGGACCAAGTGT
 GGAGGGGAAGAGTGCAACCCCTGACCTGTGAGAGTGACGCCAACCCCTCCCGTCTCCCACTACACCTGGTT
 GACTGGAATAACCAAAGCCTCCCCACACAGCCAGAAGCTGAGATTGGAGCCGGTGAAGGTCCAGCACT
 CGGGTGCCTACTGGTGCCAGGGGACCAACAGTGTGGGCAAGGGCCGTTCCGCTCTCAGCACCCCTTACTGT
 CTAATAAGCCCGGAGACCATCGGCAGGCGAGTGGCTGTGGGACTCGGGTCTGCCTCGCCATCCTCATC
 CTGGCAATCTGTGGGCTCAAGCTCCAGCGACGTTGGAAGAGGACACAGAGCCAGCAGGGGCTTCAAGGAG
 ATCCAGCGGCCAGAGCTTCTTTGTGAGGAATAAAAAGGTTAGAAGGGCCCCCTCTCTGAAGGCCCCCA
 CTCCTGGGATGCTACAATCCAATGATGGAAGATGGCATTAGCTACACCACCCCTGCGCTTCCCGAGATG
 AACATACCACGAAGTGGAGATGCAGAGTCTCAGAGATGCAGAGACCTCCCGGACCTCGGATGACACGG
 TCACTTATTCAGCATTGACAAGCGCAAGTGGGCGACTATGAGAACGTCATTCCAGATTTTCCAGAAGA
 TGAGGGGATTCATTACTCAGAGCTGATCCAGTTTGGGGTGGGGAGCGGCCTCAGGCACAAGAAAATGTG
 GACTATGTGATCCTCAAACAT

ACCGTACGCGGCCGCTCGAG - GFP Tag - GTTTAA

Protein Sequence: >RG216939 representing NM_001771
Red=Cloning site Green=Tags(s)

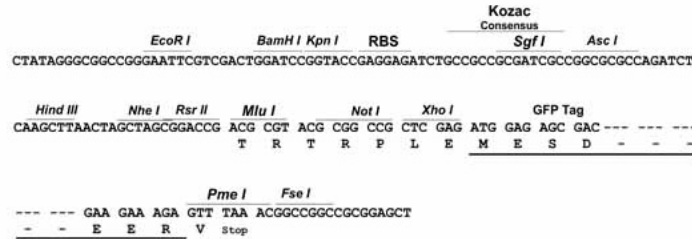
MHLLGPWLLLLVLEYLAFSDSSKWVFEHPETLYAWEGACVWIPCTYRALDGDLESFILFHNPEYNKNTSK
FDGTRL YESTKDGKVPSEQKRVQFLGDKNKNCTLSIHPVHLNDSGQLGLRMESKTEKWMERIHLNVSERP
FPPHIQLPPEIQESQEVTLTCLLNFSYGYPIQLQWLLLEGVPMRQAAVTSTSLTIKSVFTRSELKFSQW
SHHGKIVTCQLQDADGKFLSNDTVQLNVKHTPKLEIKVTPSDAIVREGDSVTMTCEVSSSNPEYTTVSWL
KDGTSLKKQNTFTLNLREVTKDQSGKYCCQVSNVGPGRSEEVFLQVQYAPEPSTVQILHSPAVEGSQVE
FLCMSLANPLPTNYTWYHNGKEMQGRTEEKVHIPKILPWHAGTYSCVAENILGTGQRGPGAELDVQYPPK
KVTTVIQNPMPIREGDTVTLSCNYNSSNPSVTRYEWKPHGAWEEPVLGVLKIQNVGWDNTTACARCNSW
CSWASPVALNVQYAPRDVVRKIKPLSEIHSGNSVSLQCDFSSSHPKVQFFWEKNGRLLGKESQLNFD
ISPEDAGSYSCWVNNSIGQTASKAWTLEVL YAPRRLRVSMSPGDQVMEGKSATLTCESDANPPVSHYTW
DWNQSLPHHSQKLRLEPVKVQHSYGAYWCQGTNSVGKGRSPLSTLTVYYSPETIGRRVAVGLGSCLA
LILAIICGLKLRQRRWKRTQSQQGLQENSSGQSFVVRNKKVRRAPLSEGPLSLGCYNPMMEDGISYTT
LRFPEMNIPRTGDAESSEMQRPPRTCDDTVTYSALHKRQVGDYENVIPDFPEDEGIHYSELIQFGVGERPQAQENV
DYVILKH

TRTRPLE - GFP Tag - V

Restriction Sites: Sgfl-MluI

Cloning Scheme:

Cloning sites used for ORF Shutting:


ACCN: NM_001771

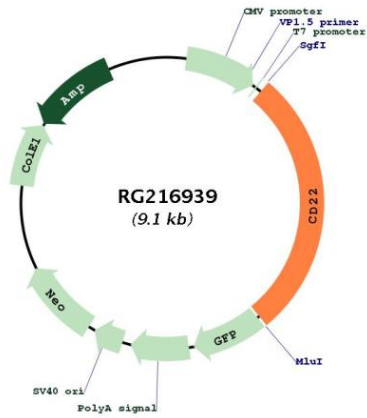
ORF Size: 2541 bp

OTI Disclaimer: Due to the inherent nature of this plasmid, standard methods to replicate additional amounts of DNA in *E. coli* are highly likely to result in mutations and/or rearrangements. Therefore, OriGene does not guarantee the capability to replicate this plasmid DNA. Additional amounts of DNA can be purchased from OriGene with batch-specific, full-sequence verification at a reduced cost. Please contact our customer care team at custsupport@origene.com or by calling 301.340.3188 option 3 for pricing and delivery.

The molecular sequence of this clone aligns with the gene accession number as a point of reference only. However, individual transcript sequences of the same gene can differ through naturally occurring variations (e.g. polymorphisms), each with its own valid existence. This clone is substantially in agreement with the reference, but a complete review of all prevailing variants is recommended prior to use. [More info](#)

OTI Annotation:	This clone was engineered to express the complete ORF with an expression tag. Expression varies depending on the nature of the gene.
Components:	The ORF clone is ion-exchange column purified and shipped in a 2D barcoded Matrix tube containing 10ug of transfection-ready, dried plasmid DNA (reconstitute with 100 ul of water).
Reconstitution Method:	<ol style="list-style-type: none">1. Centrifuge at 5,000xg for 5min.2. Carefully open the tube and add 100ul of sterile water to dissolve the DNA.3. Close the tube and incubate for 10 minutes at room temperature.4. Briefly vortex the tube and then do a quick spin (less than 5000xg) to concentrate the liquid at the bottom.5. Store the suspended plasmid at -20°C. The DNA is stable for at least one year from date of shipping when stored at -20°C.
RefSeq:	<u>NM_001771.1</u> , <u>NP_001762.1</u>
RefSeq Size:	3300 bp
RefSeq ORF:	2544 bp
Locus ID:	933
UniProt ID:	<u>P20273</u>
Cytogenetics:	19q13.12
Domains:	ig, IGc2, IG
Protein Families:	Druggable Genome, Transmembrane
Protein Pathways:	B cell receptor signaling pathway, Cell adhesion molecules (CAMs), Hematopoietic cell lineage
Gene Summary:	Mediates B-cell B-cell interactions. May be involved in the localization of B-cells in lymphoid tissues. Binds sialylated glycoproteins; one of which is CD45. Preferentially binds to alpha-2,6-linked sialic acid. The sialic acid recognition site can be masked by cis interactions with sialic acids on the same cell surface. Upon ligand induced tyrosine phosphorylation in the immune response seems to be involved in regulation of B-cell antigen receptor signaling. Plays a role in positive regulation through interaction with Src family tyrosine kinases and may also act as an inhibitory receptor by recruiting cytoplasmic phosphatases via their SH2 domains that block signal transduction through dephosphorylation of signaling molecules. [UniProtKB/Swiss-Prot Function]

Product images:



Circular map for RG216939