

## Product datasheet for **RG216428**

### **FGFR3 (NM\_022965) Human Tagged ORF Clone**

#### **Product data:**

Product Type:	Expression Plasmids
Product Name:	FGFR3 (NM_022965) Human Tagged ORF Clone
Tag:	TurboGFP
Symbol:	FGFR3
Synonyms:	ACH; CD333; CEK2; HSGFR3EX; JTK4
Mammalian Cell Selection:	Neomycin
Vector:	pCMV6-AC-GFP (PS100010)
E. coli Selection:	Ampicillin (100 ug/mL)



[View online »](#)

**ORF Nucleotide Sequence:**

>RG216428 representing NM\_022965  
 Red=Cloning site Blue=ORF Green=Tags(s)

TTTTGTAATACGACTCACTATAGGGCGGCCGGGAATTCGTCGACTGGATCCGGTACCGAGGAGATCTGCC  
 GCC**CGGATCGCC**

ATGGGCGCCCCTGCCTGCGCCCTCGCGCTCTCGTGGCCGTGGCCATCGTGGCCGGCGCCTCCTCGGAGT  
 CCTTGGGGACGGAGCAGCGCGTCTGGGGCAGCGGCAGAAGTCCCGGGCCAGAGCCCGCCAGCAGGA  
 GCAGTTGGTCTTCGGCAGCGGGGATGCTGTGGAGCTGAGCTGTCCCCGCCCCGGGGTGGTCCCATGGGG  
 CCCACTGTCTGGGTCAAGGATGGCACAGGGCTGGTGCCCTCGGAGCGTGTCTGGTGGGGCCCCAGCGGC  
 TGCAGGTGCTGAATGCCTCCACGAGGACTCCGGGGCCTACAGCTGCCGGCAGCGGCTCACGCAGCGCGT  
 ACTGTGCCACTTCAGTGTGCGGGTGACAGACGCTCCATCCTCGGGAGATGACGAAGACGGGGAGGACGAG  
 GCTGAGGACACAGGTGTGGACACAGGGGCCCTTACTGGACACGGCCGAGCGGATGGACAAGAAGCTGC  
 TGGCCGTGCCGGCCCAACACCGTCCGCTTCCGCTGCCAGCCGCTGGCAACCCCACTCCCTCCATCTC  
 CTGGCTGAAGAACGGCAGGGAGTTCGCGGCGAGCACCGCATTGGAGGCATCAAGCTGCGGCATCAGCAG  
 TGGAGCCTGGTCATGAAAGCGTGGTGCCCTCGGACCGCGCAACTACACCTGCGTCTGGAGAACAAGT  
 TTGGCAGCATCCGGCAGACGTACACGCTGGACGTGCTGGAGCGCTCCCCGACCGGCCATCCTGCAGGC  
 GGGGCTGCCGGCAACCAGACGGCGGTGCTGGGCAGCGACGTGGAGTTCCACTGCAAGGTGTACAGTGAC  
 GCACAGCCCCACATCCAGTGGTCAAGCAGTGGAGGTGAACGGCAGCAAGTGGGCCGGACGGCACAC  
 CCTACGTTACCGTGTCAAGGTGTCCTGGAGTCCAACCGTCCATGAGCTCCAACACACCACTGGTGGC  
 CATCGAAGGCTGTCTCAGGGGAGGGCCCCACGCTGGCAATGTCTCCGAGCTCGAGTGCCTGCCGAC  
 CCCAAATGGGAGCTGTCTCGGGCCCGCTGACCCTGGGCAAGCCCCTTGGGGAGGGCTGCTTCGGCCAGG  
 TGGTCATGGCGGAGGCCATCGGCATTGACAAGGACCGGGCCGCAAGCCTGTACCGTAGCCGTGAAGAT  
 GCTGAAAGACGATGCCACTGACAAGGACCTGTCGGACCTGGTGTCTGAGATGGAGATGATGAAGATGATC  
 GGGAAACACAAAAACATCATCAACCTGCTGGGCGCCTGCACGCAGGGCGGGCCCCGTACGTGCTGGTGG  
 AGTACGCGGCCAAGGTAACCTGCGGGAGTTTCTGCGGGCGCGCGGCCCCCGGGCTGGACTACTCCTT  
 CGACACCTGCAAGCCGCCGAGGAGCAGCTCACCTTCAAGGACCTGGTGTCTGTGCCTACCAGGTGGCC  
 CGGGGCATGGAGTACTTGGCCTCCAGAAGTGCATCCACAGGGACCTGGCTGCCCGCAATGTGCTGGTGA  
 CCGAGGACAACGTGATGAAGATCGCAGACTTCGGGCTGGCCGGGACGTGCACAACCTCGACTACTACAA  
 GAAGACAACCAACGGCCGGCTGCCCGTGAAGTGGATGGCGCTGAGGCCCTGTTTGACCGAGTCTACACT  
 CACCAGAGTGACGTCTGGTCTTTGGGGTCTGCTCTGGGAGATCTTACGCTGGGGGGCTCCCCGTACC  
 CCGGCATCCCTGTGGAGGAGCTTCAAGCTGCTGAAGGAGGGCCACCGCATGGACAAGCCCGCCAACCTG  
 CACACACGACCTGTACATGATCATGCGGGAGTGTGGCATGCCGCGCCCTCCAGAGGCCACCTTCAAG  
 CAGCTGGTGGAGGACCTGGACCGTGTCTTACCCTGACGTCCACCGACGAGTACCTGGACCTGTCCGGCGC  
 CTTTCGAGCAGTACTCCCGGGTGGCCAGGACACCCCAAGCTCCAGCTCCTCAGGGGACGACTCCGTGTT  
 TGCCACGACCTGCTGCCCGGGCCCAACCAGCAGTGGGGGCTCGCGGACG

AC**GGGCCGCT**CGAG - GFP Tag - GTTTAA

**Protein Sequence:** >RG216428 representing NM\_022965  
 Red=Cloning site Green=Tags(s)

```

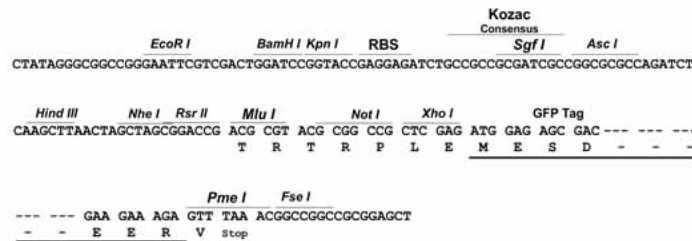
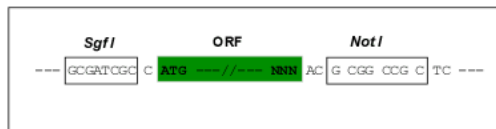
MGAPACALALCVAVAIVAGASSESLGTEQRVVGRAAEVPPEPGQEQQLVFGSGDAVELSCPPPGGGPMG
PTVWVKDGTGLVPSERVLVGPQRLQVLNASHEDSGAYSCRQRLTQRVLCHF SVRVT DAPSSGDDDEGEDE
AEDTGVDTGAPYWTRPERMDKLLAVPAANTVFRCPAAGNTPPSISWLKNGREFRGEHRIGGIKLRHQQ
WSLVMESVVPVSDRGNVTCVVENKFGSIRQTYTLDV LERSPHRPILQAGLPANQTAVLGSDFEHCKVYSD
AQPHIQWLKHVEVNGSKVGPDPGTPYVTVLKVLSLESNASMSNTPLVRIARLSSGEGPTLANVSELELPAD
PKWELSRARLTGKPLGEGCFGQVMAEAI GIDKDRAAKPVTAVKMLKDDATDKDLSLVSEMEMMKMI
GKHKNIINLLGACTQGGPLYVLVEYAAKGNLREFLRARRPPGLDYSDFTCKPPEEQ LTFKDLVSCAYQVA
RGMEYLASQKCIHRDLAARNVLVTDENVMKIADFG LARDVHNL DYYKTTNGRLPVKWM APEALFDRVYT
HQSDVWSFGVLLWEIFTLGGSPYGPVPEELFKLLKEGHRMDKPANCTHDL YMIMRECWHAAPSQRPTFK
QLVEDLDRVLTVTSTDEYLDLSAPFEQYSPGGQDTPSSSSSGDDSVFAHDLLPPAPPSSGGSR T
  
```

TRPLE - GFP Tag - V

**Restriction Sites:** SgfI-NotI

**Cloning Scheme:**

Cloning sites used for ORF Shuttling:



**ACCN:** NM\_022965

**ORF Size:** 2082 bp

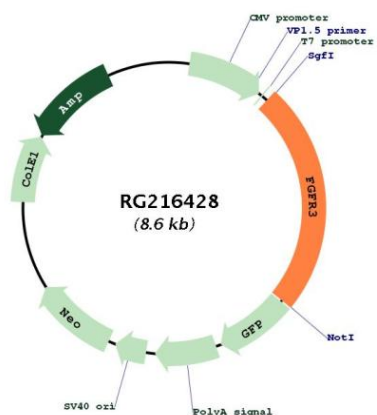
**OTI Disclaimer:** The molecular sequence of this clone aligns with the gene accession number as a point of reference only. However, individual transcript sequences of the same gene can differ through naturally occurring variations (e.g. polymorphisms), each with its own valid existence. This clone is substantially in agreement with the reference, but a complete review of all prevailing variants is recommended prior to use. [More info](#)

**OTI Annotation:** This clone was engineered to express the complete ORF with an expression tag. Expression varies depending on the nature of the gene.

**Components:** The ORF clone is ion-exchange column purified and shipped in a 2D barcoded Matrix tube containing 10ug of transfection-ready, dried plasmid DNA (reconstitute with 100 ul of water).

<b>Reconstitution Method:</b>	<ol style="list-style-type: none"><li>1. Centrifuge at 5,000xg for 5min.</li><li>2. Carefully open the tube and add 100ul of sterile water to dissolve the DNA.</li><li>3. Close the tube and incubate for 10 minutes at room temperature.</li><li>4. Briefly vortex the tube and then do a quick spin (less than 5000xg) to concentrate the liquid at the bottom.</li><li>5. Store the suspended plasmid at -20°C. The DNA is stable for at least one year from date of shipping when stored at -20°C.</li></ol>
<b>RefSeq:</b>	<a href="#">NM_022965.1</a> , <a href="#">NP_075254.1</a>
<b>RefSeq Size:</b>	3757 bp
<b>RefSeq ORF:</b>	2085 bp
<b>Locus ID:</b>	2261
<b>UniProt ID:</b>	<a href="#">P22607</a>
<b>Cytogenetics:</b>	4p16.3
<b>Domains:</b>	pkinase, TyrKc, S_TKc, ig, IGc2, IG
<b>Protein Families:</b>	Druggable Genome, Protein Kinase, Transmembrane
<b>Protein Pathways:</b>	Bladder cancer, Endocytosis, MAPK signaling pathway, Pathways in cancer, Regulation of actin cytoskeleton
<b>Gene Summary:</b>	<p>This gene encodes a member of the fibroblast growth factor receptor (FGFR) family, with its amino acid sequence being highly conserved between members and among divergent species. FGFR family members differ from one another in their ligand affinities and tissue distribution. A full-length representative protein would consist of an extracellular region, composed of three immunoglobulin-like domains, a single hydrophobic membrane-spanning segment and a cytoplasmic tyrosine kinase domain. The extracellular portion of the protein interacts with fibroblast growth factors, setting in motion a cascade of downstream signals, ultimately influencing mitogenesis and differentiation. This particular family member binds acidic and basic fibroblast growth hormone and plays a role in bone development and maintenance. Mutations in this gene lead to craniosynostosis and multiple types of skeletal dysplasia. [provided by RefSeq, Aug 2017]</p>

Product images:



Circular map for RG216428