

Product datasheet for **RG216424**

GABA A Receptor beta 2 (GABRB2) (NM_000813) Human Tagged ORF Clone

Product data:

Product Type:	Expression Plasmids
Product Name:	GABA A Receptor beta 2 (GABRB2) (NM_000813) Human Tagged ORF Clone
Tag:	TurboGFP
Symbol:	GABA A Receptor beta 2
Synonyms:	DEE92; ICEE2
Mammalian Cell Selection:	Neomycin
Vector:	pCMV6-AC-GFP (PS100010)
E. coli Selection:	Ampicillin (100 ug/mL)



[View online »](#)

ORF Nucleotide Sequence:

>RG216424 representing NM_000813
 Red=Cloning site Blue=ORF Green=Tags(s)

TTTTGTAATACGACTCACTATAGGGCGGCCGGGAATTCGTGCGACTGGATCCGGTACCGAGGAGATCTGCC
 GCC**CGCATCGCC**

ATGTGGAGAGTGGCGAAAAGGGCTACTTTGGGATTTGGTCTTCCCCTTAATAATCGCCGCTGTCTGTG
 CGCAGAGTGTCAATGACCCTAGTAATATGTCGCTGGTTAAAGAGACGGTGGATAGACTCCTGAAAGGCTA
 TGACATTCGTCTGAGACCAGATTTTGGAGTCCCCCGTGGCTGTGGGATGAACATTGACATTGCCAGC
 ATCGATATGGTTTCTGAAGTCAATATGGATTATACCTTGACAATGTACTTTCAACAAGCCTGGAGAGATA
 AGAGGCTGTCTATAATGTAATACCTTTAACTTGACTCTGGACAACAGAGTGGCAGACCAGCTCTGGGT
 GCCTGATACCTATTTCTGAACGATAAGAAGTCATTTGTGCACGGAGTACTGTTAAGAACCAGTATT
 CGCTGCATCCTGATGGCACCCTCTTTATGGACTCAGAATCACAACCACAGCTGCCTGCATGATGGACC
 TAAGGAGTACCCACTGGATGAACAAAAGTGCACCTTGGAAATTGAGAGCTATGGATACACAAGTATGA
 CATTGAGTTTTACTGGCTGGCGATGATAATGCAGTAACAGGAGTAACGAAAATTGAACTCCACAGTTC
 TCTATTGTAGATTACAAAATTATACCAAGAAGTTGTTTTTCCACAGTTCTATCCCAGTTATCCC
 TCAGCTTTAAGCTTAAGAGAAAACATTGGCTACTTTATCCTGCAAAACATACATGCCTTCCATCCTGATTAC
 CATCCTCTCCTGGGTCTCCTTCTGGATTAATTACGATGCTTCAGCTGCAAGGGTGGCATTAGGAATCACA
 ACTGTCCTCACAATGACCACAATCAACACCCACCTCCGGGAAACTCTCCCTAAAAATCCCCTATGTGAAGG
 CCATTGACATGTACCTGATGGGGTGCTTTGTCTTCGTTTTTCATGGCCCTTCTGGAATATGCCCTAGTCAA
 CTACATCTTCTTTGGGAGGGGGCCCCAACGCCAAAAGAAAGCAGCTGAGAAGGCTGCCAGTGCCAAACAT
 GAGAAGATGCCCTGGATGTCAACAAGATGGACCCCATGAGAACATCTACTGAGCACTCTCGAGATAA
 AAAATGAAATGGCCACATCTGAGGCTGTGATGGGACTTGGAGACCCAGAACATGCTAGCCTATGA
 TGCTTCCAGCATCCAGTATCGGAAAGCTGGTTGCCAGGCATAGTTTTTGGCCGAAATGCTCTGGAACGA
 CATGTGGCGCAAAAGAAAAGTCGCTGAGGAGACGCGCCTCCCAACTGAAAATCACCATCCTGACTTGA
 CTGATGTGAATGCCATAGATCGGTGGTCCCGCATATTCTTCCAGTGTTTTTCTTCTTCAACATCGT
 CTATTGGCTTTATTATGTGAAC

ACGCGTACGCGGCCGCTCGAG – GFP Tag – GTTTAA

Protein Sequence:

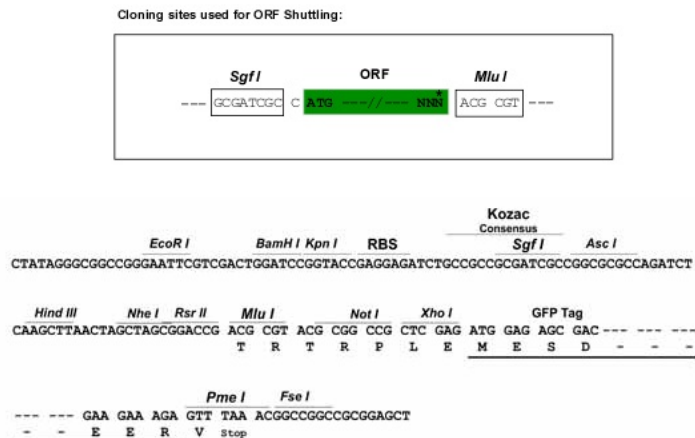
>RG216424 representing NM_000813
 Red=Cloning site Green=Tags(s)

MWRVRKRGYFGIWSFPLIIAAVCAQSVNDPSNMSLVKETVDRLKGYDIRLRPDFGGPPVAVGMNIDIAS
 IDMVSEVNMDYTLTMYFQQAWRDKRLSYNVIPLNLTLDNRVADQLWVPDLYFLNDKKSFVHGVTVKNRMI
 RLHPDGTVLYGLRITTTAACMMDLRRYPLDEQNCTLEIESYGYTDDIEFYWRGDDNAVTVTKIELPQF
 SIVDYKLITKKVVFSTGYPRLSLSFKLKRNIGYFILQTYMPSILITILSWVSFWINYDASAARVALGIT
 TVLTMTTINTHLRETLPKIPYVKAIDMYLMGCFVFMALLEYALVNYIFFGRGPQRQKKAEEKAAASANN
 EKMRLDVNMKDPHENILLSTLEIKNEMATSEAVMGLDPRSTMLAYDASSIQYRKAGLPRHSFGRNALER
 HVAQKKSRLRRRASQLKITIPDLTDVNAIDRWSRIFFPVVSFFNIVYWLYYVN

TRTRPLE – GFP Tag – V

Restriction Sites:

Sgfl-MluI

Cloning Scheme:


ACCN: NM_000813

ORF Size: 1422 bp

OTI Disclaimer: The molecular sequence of this clone aligns with the gene accession number as a point of reference only. However, individual transcript sequences of the same gene can differ through naturally occurring variations (e.g. polymorphisms), each with its own valid existence. This clone is substantially in agreement with the reference, but a complete review of all prevailing variants is recommended prior to use. [More info](#)

OTI Annotation: This clone was engineered to express the complete ORF with an expression tag. Expression varies depending on the nature of the gene.

Components: The ORF clone is ion-exchange column purified and shipped in a 2D barcoded Matrix tube containing 10ug of transfection-ready, dried plasmid DNA (reconstitute with 100 ul of water).

Reconstitution Method:

1. Centrifuge at 5,000xg for 5min.
2. Carefully open the tube and add 100ul of sterile water to dissolve the DNA.
3. Close the tube and incubate for 10 minutes at room temperature.
4. Briefly vortex the tube and then do a quick spin (less than 5000xg) to concentrate the liquid at the bottom.
5. Store the suspended plasmid at -20°C. The DNA is stable for at least one year from date of shipping when stored at -20°C.

RefSeq: [NM_000813.1](#), [NP_000804.1](#)

RefSeq Size: 1860 bp

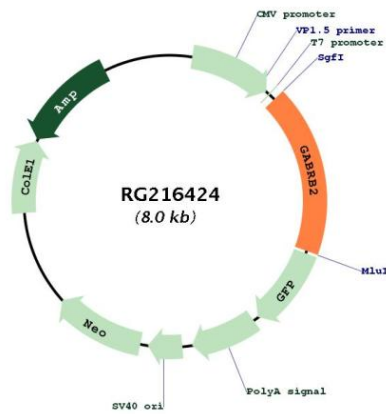
RefSeq ORF: 1425 bp

Locus ID: 2561

UniProt ID: [P47870](#)

Cytogenetics: 5q34
Domains: Neur_chan_memb, Neur_chan_LBD
Protein Families: Druggable Genome, Ion Channels: Cys-loop Receptors, Transmembrane
Protein Pathways: Neuroactive ligand-receptor interaction
Gene Summary: The gamma-aminobutyric acid (GABA) A receptor is a multisubunit chloride channel that mediates the fastest inhibitory synaptic transmission in the central nervous system. This gene encodes GABA A receptor, beta 2 subunit. It is mapped to chromosome 5q34 in a cluster comprised of genes encoding alpha 1 and gamma 2 subunits of the GABA A receptor. Alternative splicing of this gene generates 2 transcript variants, differing by a 114 bp insertion. [provided by RefSeq, Jul 2008]

Product images:



Circular map for RG216424