

## Product datasheet for **RG215868**

### FGF12 (NM\_021032) Human Tagged ORF Clone

#### Product data:

Product Type:	Expression Plasmids
Product Name:	FGF12 (NM_021032) Human Tagged ORF Clone
Tag:	TurboGFP
Symbol:	FGF12
Synonyms:	DEE47; EIEE47; FGF12B; FHF1
Mammalian Cell Selection:	Neomycin
Vector:	pCMV6-AC-GFP (PS100010)
E. coli Selection:	Ampicillin (100 ug/mL)
ORF Nucleotide Sequence:	>RG215868 representing NM_021032 Red=Cloning site Blue=ORF Green=Tags(s)

TTTTGTAATACGACTCACTATAGGGCGCCGGAATTCGTCGACTGGATCCGGTACCGAGGAGATCTGCC  
GCC**CGATCGCC**

ATGGCTGCGGCGATAGCCAGCTCCTTGATCCGGCAGAAGCGGCAGGCGAGGGAGTCCAACAGCGACCGAG  
TGTCGGCTCCAAGCGCCGCTCCAGCCCCAGCAAAGACGGGCGCTCCCTGTGCGAGAGGCACGTCTCGG  
GGTGTTCAGCAAAGTGCCTTTCGAGCGGCCGCAAGAGGCCGGTGAGGCGGAGACCAGAACCCAGCTC  
AAAGGGATTGTGACAAGTTATTCAGCCAGCAGGATACTTCTGCAGATGCACCCAGATGGTACCATTG  
ATGGGACCAAGGACGAAAACAGCGACTACTCTCTTCAATCTAATTCGGTGGGCTGCGTGTAGTGGC  
CATCCAAGGAGTGAAGGCTAGCCTCTATGTGGCCATGAATGGTGAAGGCTATCTCTACAGTTCAGATGTT  
TCACTCCAGAATGCAAATCAAGGAATCTGTGTTTGAAACTACTATGTGATCTATTCTCCCACTGT  
ACCGCCAGCAAGAATCAGGCCGAGCTTGGTTTCTGGGACTCAATAAAGAAGGTCAAATTATGAAGGGGAA  
CAGAGTGAAGAAAACCAAGCCCTCATCATTGTTACCAGAACTATTGAAGTGTGTATGTACAGAGAA  
CCATCGTACATGAAATTGGAGAAAAACAAGGGCGTTCAAGGAAAAGTTCTGGAACCAACCATGAATG  
GAGGCAAAGTTGTGAATCAAGATTCAACA

**ACGCGT**ACGCGGCCGCTCGAG - GFP Tag - GTTTAA



[View online »](#)

**Protein Sequence:** >RG215868 representing NM\_021032  
Red=Cloning site Green=Tags(s)

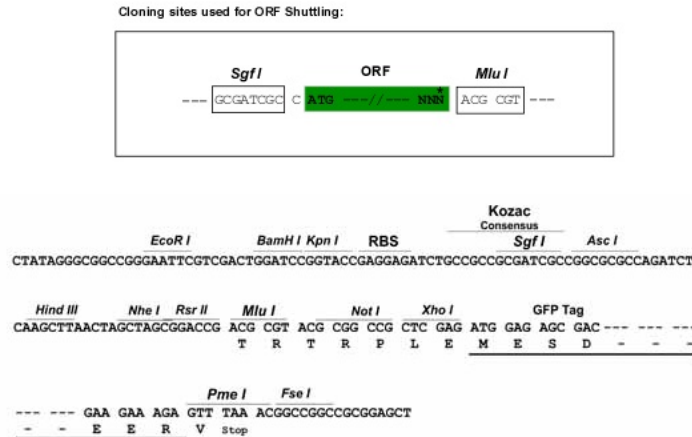
MAAAIASSLIRQKRQARENSDRVSASKRRSSPSKDGSRSLCERHVLGVFSKVRFCSGRKRPPVRRRPEPQL  
 KGIVTRLFSQQGYFLQMHPDGTIDGTDKENS D YTLFNLIPVGLRVVAIQGVKASLYVAMNGEGYL YSSDV  
 FTPECKFKESVFENYYVIYSSTLYRQQESGRAWFLGLNKEGQIMKGNRVKTKPSSHFVPKPIEVCMYRE  
 PSLHEIGEKGGRSRKSSGTPTMNGGKVVNQDST

TRTRPLE - GFP Tag - V

**Chromatograms:** [https://cdn.origene.com/chromatograms/ja3754\\_b06.zip](https://cdn.origene.com/chromatograms/ja3754_b06.zip)

**Restriction Sites:** SgfI-MluI

**Cloning Scheme:**



**ACCN:** NM\_021032

**ORF Size:** 729 bp

**OTI Disclaimer:** The molecular sequence of this clone aligns with the gene accession number as a point of reference only. However, individual transcript sequences of the same gene can differ through naturally occurring variations (e.g. polymorphisms), each with its own valid existence. This clone is substantially in agreement with the reference, but a complete review of all prevailing variants is recommended prior to use. [More info](#)

**OTI Annotation:** This clone was engineered to express the complete ORF with an expression tag. Expression varies depending on the nature of the gene.

**Components:** The ORF clone is ion-exchange column purified and shipped in a 2D barcoded Matrix tube containing 10ug of transfection-ready, dried plasmid DNA (reconstitute with 100 ul of water).

**Reconstitution Method:**

1. Centrifuge at 5,000xg for 5min.
2. Carefully open the tube and add 100ul of sterile water to dissolve the DNA.
3. Close the tube and incubate for 10 minutes at room temperature.
4. Briefly vortex the tube and then do a quick spin (less than 5000xg) to concentrate the liquid at the bottom.
5. Store the suspended plasmid at -20°C. The DNA is stable for at least one year from date of shipping when stored at -20°C.

**RefSeq:** [NM\\_021032.5](#)

**RefSeq Size:** 2817 bp

**RefSeq ORF:** 732 bp

**Locus ID:** 2257

**UniProt ID:** [P61328](#)

**Cytogenetics:** 3q28-q29

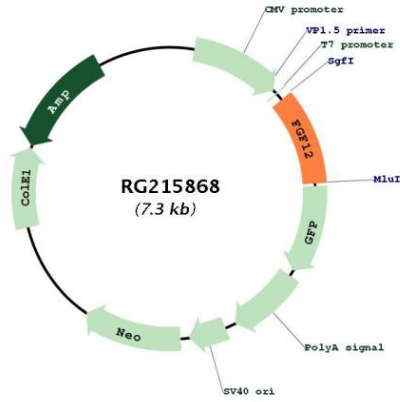
**Domains:** FGF

**Protein Families:** Secreted Protein

**Protein Pathways:** MAPK signaling pathway, Melanoma, Pathways in cancer, Regulation of actin cytoskeleton

**Gene Summary:** The protein encoded by this gene is a member of the fibroblast growth factor (FGF) family. FGF family members possess broad mitogenic and cell survival activities, and are involved in a variety of biological processes, including embryonic development, cell growth, morphogenesis, tissue repair, tumor growth, and invasion. This growth factor lacks the N-terminal signal sequence present in most of the FGF family members, but it contains clusters of basic residues that have been demonstrated to act as a nuclear localization signal. When transfected into mammalian cells, this protein accumulated in the nucleus, but was not secreted. The specific function of this gene has not yet been determined. [provided by RefSeq, Dec 2019]

Product images:



Circular map for RG215868