

Product datasheet for **RG215569**

UMODL1 (NM_001004416) Human Tagged ORF Clone

Product data:

Product Type:	Expression Plasmids
Product Name:	UMODL1 (NM_001004416) Human Tagged ORF Clone
Tag:	TurboGFP
Symbol:	UMODL1
Mammalian Cell Selection:	Neomycin
Vector:	pCMV6-AC-GFP (PS100010)
E. coli Selection:	Ampicillin (100 ug/mL)
ORF Nucleotide Sequence:	>RG215569 representing NM_001004416 Red=Cloning site Blue=ORF Green=Tags(s)

TTTTGTAATACGACTCACTATAGGGCGGCCGGAATTCGTCGACTGGATCCGGTACCGAGGAGATCTGCC
GCC**CGATCGCC**

ATGCTCAGGACCTCGGGGCTGGCACTGCTGGCTCTGGTCAGTGCTGTGGGCCAAGCCAGGCCAGCGGCT
TCACAGAAAAAGGCCTCTCCCTGTTGGGCTACCAGCTATGCAGCCACCGTGTGACCCACACTGTACAGAA
GGTGGAGGCCGTGCAGACGTCTACACGTCTATGTGTCTCGCGCGGCTGGATCCCCTGGAGGCCGTGC
CCTAAGATGGTTTACCGACACAGTACCTGGTAGTGGAGTCCCCGAGTCCAGGAACGTGACTGACTGCT
GTGAGGGCTATGAACAGCTCGGCCTCTACTGTCTTGGCCCTGAATCAGTCCGGGCAGTTCACGCAAG
ACCTGGGCGCTGCCCCGAGAGGGGCTGAACCATCCACCTCCCCTGCAGCTTGGACATCGACTGTCTCT
GGACTTGAGAAGTGTGCCCTGGTCAGGGGGGCGCTACTGCATGGCCCTGCACCCCAAGCTCCAGAGA
GGGACCTGTGGGCTCCTGGTACAACGTCACCATACTGGTAAAAATGGACTTCAAGGAACTCCAGCAAGT
GGACCCAGGCTCCTGAACCACATGCGCCTTTCGATTCTTGGTCACCAGCGCCCTGCAACCAATGGCC
TCCACCGTCCACCACCTGCACTCAGCCCTGGGAACGCCCTCCACCACAGTGTGCGGGCTGCTACTGGCC
TGCCACGGCCACTGCCTGTGGCTGACGTCTCCACCCTGCTGGGTGACATTGCGAAGCGTGTCTATGAAGT
GATCAGCGTCCAGGTGCAAGATGTAATGAGTGTCTATGAGGAGCTCAATGCCTGCTCTGGAAGGGAA
CTGTGCGCAAACCTGGAGGGCTCGTACTGGTGCCTGTGCACCAGGAAGTCCAGCCACGCTCCACGGA
AGCTGAACCTGGAGTGGGAAGATTGTCTCCAGTCACTGACTACGTGGTCTCAACGTCAACAGTACAG
TTTTCAAGTATCCTGGCCTTTAAATTCTACACAGAACCACACTTTCCATGTCCGGGTTTACCGGGTATG
GAGTTGCTCAGGAGCGCCAGGACACAGAGCCAGGCACTGGCAGTGGCTGGGCTGGAGGCTGGAGTGTCT
ACAGGGTGAAGACCAGCTACCAGGGGTGCGGGGCGGACGTCTCCACCACGCTGACCATCAAAACCAATGC
CCAGGTATTTGAAGTACAATAAAGATTGTAACCACAACCTGACGGAGAAGTTACTCAACCGCAGCAGT
GTGGAGTACCAGGACTTTTCTAGACAACCTGCTTACGAGGTCGAGAGCTCCTTCCACAGTGGTGTCTG
ACTTGTACCGAAGTGGGAAGCTGAGAATGCAGATCGTGTCTTCCAGGCGGGAAGTGTGGTCTGAGGCT
CAAGTCAACGTCAGGACCCCGGGTTCCCATGGGCATCTCCACGCTGGCCCCATACTCCAGCCCTCTG
TTGGCAAGCACAGTGTCCAGATTGACCGGACAGGGGACACGCGTCAAGACTGGGACAGTGTGTGGACA
GCGCGAACACGACTGCTCACCGGCTGCCTGGTGCATCAACCTGGAGGGCTCTACACCTGCCAGTGCCG



[View online »](#)

TACCACCAGGGACGCCACCCCTCCCGCGCAGGCCGGCCTGTGAGGGTGACCTGGTGAGCCCCACGGGCGGTGGACTGTCTGCGGCAACAGGGGTAACGGTCCCAGGTCTTGGCACGGGAACAGCAGCCCTCGGCCTAGAGAAGTTCACCTTGTACCCAGTCTGGGTACCCTCAGGGCACCCGGCAGCAGGCCAGGCCTGGACCCAGAGCCCTCACCCAGAAGAGGGGGCAGCAATGTGGTCGGGTATGACAGGAACAACACAGGAAAAGGCGTGAGCAGGAGCTACAGGAAAATCCATCATGGAGCCACCCTCTGGCCTTCCCCTACTGAGGACCCACCGGCCACTTCTGTGGCATGCCACCCGTTCCACCCGGGAAACTTCTGAATCCCACGTGGCTGCGAAATGAGGACATGGACCCTCCGTTCTGTAGACCTGCCATTGACCTCCACCCTCACAGCTCTGAAGACCCCGCTGTGTTCCCTGTCTCCATTGGGAGGATCATGGTCTCCAATGTGACCAGCACCGGCTTCCACCTGGCATGGGAGCGGATCTTGCTATGGACTCCACCTTCCAGCTCACTCTGACTTCCATGTGGAGCCCTGCTGTGGTCTAGAGACCTGGAACACGAGTGTGACACTGTGCGGGCTGGAGCCTGGGGTCTTGACCTGGTTGAGATCATGGCCAAAGCATGTGGAAAGAAGGTGCCAGAGCTCATCTGAAAGTGAGGACAGCAGCCGGAAGCTCATTGAAAGGTCAGAATCAAAAATGTCAGGTAAGTCTCAGAAATCCTTTCGCAACGCAAGCAGCCAGGAGTATCGAGATTTCTAGAACTATTCTCAGGATGGTGCAGGCTCCCTGCCAGCCACCATGTGTCAGCACATGGACGCTGGTGGGGTCAGGATGGAAGTCGTCAGCGTACCAACGGCAGCATCGTGGTGGAGTTTCACTTGTGATAATCGCAGATGTGGATGTCCAGGAGGTGTCAGCTGCATTTCTCACCGCCTTCCAGACCGTGCCTCTGCTGGAAGTGATCAGAGGGCAGACCTTACATACAGGATTACGATGAGTGTGAAAGGAAGGAGGACACTGTGTGCCGGGACATCCTGTGCAAAACACCCCTCGGGTCTTCACTTGTAGCTGCGAGGGAGGAGCCCCGACTTCCCTGTGGAATATTCTGAGAGACCCCTGTGAAGGTGACTCTCCTGGCAATGAAACCTGGGCCACCAGCCAGAGAGCCCTCTCACACAGCAGGGACCAAGGCTGCCTTGTGCAAGGCACCAGCCCCACCCCAAGGCCTGCCCAGCGGTGAACCTGACCGGAGCAGTCAAGGTGCTCTGTGAGATCGAGAAGGTGGTTGTGCGCATCCAGAGCGCTTCTGCAGCAGGAATCCATCCCGAGTCTCGTTGTACCTCAGCCACCCTCTGCAACGTGAGCCACAGCAATGGCACACACGTGCTCCTGGAGCCGGCTGGAGCGAGTGTGGGACCCTCATGCAGAGCAACATGACGAAACACCGTGGTGGAGACCAGCTGAGGAACGACCTGTCCAGGAGGGCATCATCCACACCTGAGATCCTGAGCCCCATCTACTGCGCTTCCAGAATGACCTGCTGACATCCTCCGGCTTCAACCTGGAGTGGGGTTTACACCATCATCGAGGACCTCCACGGCGCTGGGAATTTTGTACCGAAATGCAGTTGTTTATCGGAGACTCTCCATACCTCAGAATTATAGCGTGTCTGCCAGTGACGATGTGAGGATCGAAGTGGGCTCTACAGGCAGAAAAGCAACCTCAAGGTGGTCTGACGGAGTGTGGGCAACCCCGTCTAGCAACGCCGGGACCCCATCACCTTCACTTATTAAACAGCTGCCCTGTGCCAACACATACACCAACGTGATTGAGAAGGCAACTCCAATAAGGCCAGTTCAAGCTGAGGATCTTTTCTTTATCAACGACTCCATCGTCTACCTGCTACTGCAAACTCCGCTGTGCATGGAATCCCCGGAGCCACGTGCAAAATCAATTGCAATAACTTTCCGTTGCTGCAAAATAGTAAACCTCTGCCACACACCAGATGTCTGGGACCCCTCATCCGGTCTGAAGGTGAGCCTCCTCATGCAGAAGCAGGCCTGGGTGCCGTTATGTGGTCTTATTGTGGTGGCCATCTTCGTGCTGGTGGCGGAAACAGCCACCTTCTGATCGTGCCTACCAGAGAATGAATGGGAGATACAACCTTAAATCCAATCCAACTTCAAGTACCAGGTGTTCTACGAA

AGCGGACCGACGCGTACGCGCCGCTCGAG - GFP Tag - GTTTAA

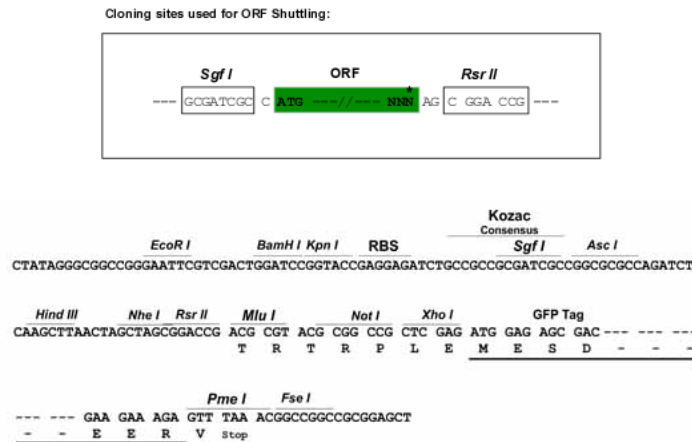
Protein Sequence: >RG215569 representing NM_001004416
 Red=Cloning site Green=Tags(s)

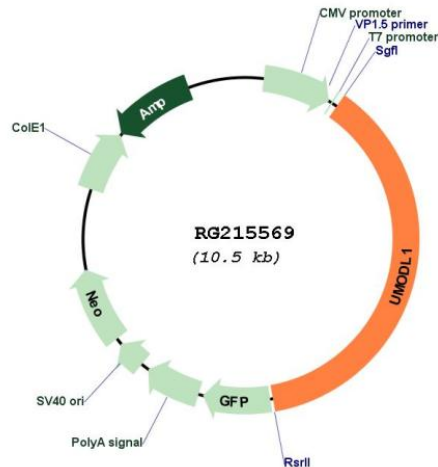
MLRTSGLALLALVSAVGPSQASGFTEKGLSLLGYQLCSHRVHTVQKVEAVQTSYTSYVSCGGWIPWRRCPKMVYRTQYLVEVPESRNVTDCCEGYEQLGLYCVLPLNQSQT SRPGACPAEGPEPSTSPCSLDIDCPGLEKCCPWSSGGRYCMAAPQAPERDPVGSWYNVTILVKMDFKELQQVDPRLLNHMRLLSLVT SALQPMASTVHHLHSAPGNASTTVSRLLLGLPRPLPVADVSTLLGDIKRVEVIVSVQVQDVNECFYEELNACSGRELCANLEGSYWCVCHQEAPATSPRKLNLWEEDCPPVSDYVVLNVTSDSFQVSWRLNSTQNHTFHVRVYRGMELLRSARTQSQUALAVAGLEAGVLYRVKTSYQGGADVSTTLTIKTNAQVFVETIKIVNHNLTEKLLNRSSVEYQDFSRQLLHEVESSFPVSDLYRSGKLRMQIVSLQAGSVVRLKLTVDPGFPMGISTLAPILQPLLASTVVFQIDRQGRVQDWECDVSAEHDCSPAAWCINLEGSYTCQCRTTRDATPSRAGRACEGDLVSPTGGGLSAATGVTVPGLGTGTAAALGLENFTLSPSPGYPQGTAAAGQAWTPEPSRRGGSNVVGYDRNNTGKVEQELQGNISIMEPPSWPSPTEDPTGHFLWHATRSTRELLNPTWLRNEDSGPSGSVDLPLTSTLTALKTPACVPVSI GRIMVSNVTSTGFHLAWEADLAMDSTFQLT L TSMWSPAVVLETWNTSVTL SGLEPGVLHLVEIMAKACGKEGARHLKVRTAARKLIGKVRIKNVRYSESFRNASSQEYRDFLELFFRMVVRGSLPATMCQHMDAGGVRMEVSVTNGSIVVEFHLLIIADVDVQEVSAFLTAFQTVPLLEVIRGDTFIQDYDECERKEDDCVPGTSCRNTLGSFTCSCEGGAPDFPVEYSERPCEGDSPGNETWATSPERPLTTAGTKAAFVQGTSPTPQGLPQRLNLTGAVRVLCEIEKVVAIAIKRFLQEQESIPESLYL SHPSCNVSHSNGTHVLL EAGWSECGLMQSNMTNTVVRTTLRNDLSQEGIIHHLKILSPIYCAFQNDLLTSSGFTLEWGVYTIIEDLHGAGNFVTEMQLFI GDSPIPQNYSVASDDVRIEVLRYRQKSNLKVVLTECWATPSSNARDPITFSFINNSCPVNTYTNVIENGNSNKAQFKLRIFSFINDSIVYLHCKLRVCMESPGATCKINCNNFRLQNSSETSATHQMSWGPLIRSEGGPPHAEAGLGAGYVVLIVVAIFVLVAGTATLLIVRYQRMNGRYNFKIQSNNF SYQVFYE

SGPTRRRLE - GFP Tag - V

Restriction Sites: SgfI-RsrII

Cloning Scheme:



Plasmid Map:


ACCN: NM_001004416

ORF Size: 3954 bp

OTI Disclaimer: The molecular sequence of this clone aligns with the gene accession number as a point of reference only. However, individual transcript sequences of the same gene can differ through naturally occurring variations (e.g. polymorphisms), each with its own valid existence. This clone is substantially in agreement with the reference, but a complete review of all prevailing variants is recommended prior to use. [More info](#)

OTI Annotation: This clone was engineered to express the complete ORF with an expression tag. Expression varies depending on the nature of the gene.

Components: The ORF clone is ion-exchange column purified and shipped in a 2D barcoded Matrix tube containing 10ug of transfection-ready, dried plasmid DNA (reconstitute with 100 ul of water).

Reconstitution Method:

1. Centrifuge at 5,000xg for 5min.
2. Carefully open the tube and add 100ul of sterile water to dissolve the DNA.
3. Close the tube and incubate for 10 minutes at room temperature.
4. Briefly vortex the tube and then do a quick spin (less than 5000xg) to concentrate the liquid at the bottom.
5. Store the suspended plasmid at -20°C. The DNA is stable for at least one year from date of shipping when stored at -20°C.

RefSeq: [NM_001004416.2](#), [NP_001004416.2](#)

RefSeq Size: 4878 bp

RefSeq ORF: 3957 bp

Locus ID: 89766

UniProt ID: [Q5DID0](#)

Cytogenetics: 21q22.3

Protein Families: Transmembrane