

Product datasheet for **RG215145**

NLRP13 (NM_176810) Human Tagged ORF Clone

Product data:

Product Type: Expression Plasmids
Product Name: NLRP13 (NM_176810) Human Tagged ORF Clone
Tag: TurboGFP
Symbol: NLRP13
Synonyms: CLR19.7; NALP13; NOD14; PAN13
Mammalian Cell Selection: Neomycin
Vector: pCMV6-AC-GFP (PS100010)
E. coli Selection: Ampicillin (100 ug/mL)
ORF Nucleotide Sequence: >RG215145 representing NM_176810
Red=Cloning site Blue=ORF Green=Tags(s)

TTTTGTAATACGACTCACTATAGGGCGGCCGGAATTCGTCGACTGGATCCGGTACCGAGGAGATCTGCC
GCC**CGATCGCC**

ATGAACCTTTCTGTAATCACCTGCCCAACGGTGGTACCAACCAAGGGCTTCTGCCTTACCTGATGGCCC
TGGATCAGTATCAGCTGGAGGAATCAAGCTTTGCTTGGAAACCCAGCAGCTGATGGACTTCTGGTCGGC
CCCCAGGGGCACTTCCCGGTATCCCCTGGGCAAACTTGAGAGCTGCCACCCTTTGAATCTGCCTTT
CTTTGGATGAACACTTCCAAAAGGTCAGGCATGAAAGTGGTCTCGGCATCTCCAGACAATGAATC
TGACCTACTGTGTGAGAAAGTTAGAGCCGAGATGAAAGAGAATGTGCAGACCCAAGAGCTGCAAGATCC
AACCCAGGAAGATCTAGAGATGCTAGAAGCAGCAGCAGGGAATATGCAGACCCAGGGATGCCAAGATCCA
AACCAAGAAGAAGTAGACGAGCTAGAAGAAGAAACAGGGAATGTACAGGCCAGGGATGCCAAGATCCAA
ACCAAGAAGAACCAGAGATGCTAGAGGAAGCAGACCACAGAAGAAAATACAGAGAGAACATGAAGGCTGA
ACTACTGGAGACATGGGACAACATCAGTTGGCCTAAAGACCACGTATATCCGTAATACATCAAAGGAC
GAACATGAGGAAGTGCAGCGCCTACTGGATCCTAATAGGACTAGAGCCCAGGCCAGACGATAGTCTTGG
TGGGGAGGGCAGGGTTGGGAAGACCACCTTGGCAATGCAGGCTATGCTGCCTGGGCAATGGAGTTCT
CTTTCAGCAAAGGTTCTCCTATGTTTTCTATCTCAGCTGCCATAAAAATAGGTACATGAAGGAACTACC
TTTGCTGAATTGATTTCTTTGGATTGGCCCGATTTTGATGCCCCATTGAAGGTTTCATGTCTCAACCG
AGAAGCTCCTGTTTATTATTGATGGCTTTGAGGAAATAATCATATCTGAGTCACGCTCTGAGAGCTTGA
TGATGGCTCGCCATGTACAGACTGGTACCAGGAGCTCCAGTGACCAAAATCCTACACAGCTTGTGAAG
AAAGAATTGGTTCCCCTGGCTACTTACTGATCACGATCAAGACCTGGTTTGTGAGAGATCTTAAGGCTT
CATTAGTGAATCCATGCTTTGTACAAAATACAGGGTTCACAGGGGACGACCTACGGGTATATTTTCATGAG
ACACTTTGATGACTCAAGTGAAGTTGAGAAAATCCTGCAGCAGCTAAGAAAAACGAAACTCTTTTCAT
TCCTGCAGTGCCCCATGGTGTGTTGGACCGTATGTTCTGTCTGAAGCAGCCGAAGGTGAGGTATTACG
ATCTCCAGTCAACTCACTCAGACTACCACAGTCTGTATGCCTATTTTTTCTCCAACTTGTCTCCACAGC
AGAGGTAGATTTGCGAGATGACAGCTGGCCAGGACAATGGAGGGCCCTCTGCAGCTGGCCATAGAAGGG



CTGTGGTCTATGAACTTCACATTTAACAAAGAAGACACTGAGATTGAGGGCCTGGAAGTGCCTTTTCATTG
 ATTCTCTCTACGAGTTCAATATTCTTCAAAAGATCAATGACTGTGGGGTTGCACTACTTTCACCCACCT
 AAGTTTCCAGGAGTTTTTTCAGCCATGTCCTTTGTGCTAGAGGAACCTAGAGAATTCCTCCCATTC
 ACAAAGCCACAAGAGATGAAGATGTTACTGCAACACGCTTTGCTTGACAAAGAAGCTACTGGACTCCAG
 TGGTCTGTCTCTTTGGTCTTTAAATAAAAACATAGCAAGAGAACTGGAAGATACTTTGCATTGTAA
 AATATCTCCAGGGTAATGGAGGAATTATTAAGTGGGGAGAAGAGTTAGGTAAGGCTGAAAGTGCCTCT
 CTCCAATTTACATTCTACGACTTTTTCACTGCCTACACGAGTCCCAGGAGGAAGACTTCAAAAGAAGA
 TGTGGGTGCGTATCTTTGAAGTTGACCTTAATATTTTGGAGGACGAAGAAGCTCCAAGCTTCTTCAATTTG
 CCTAAAGCACTGTAAAAGTTAAATAAGCTAAGGCTTTCTGTTAGCAGTCACATCCTTGAAGGGACTTG
 GAAATTCTGGAGACAAGCAAGTTTGATTCCAGGATGCACGCATGGAACAGCATTGCTCTACGTTGGTCA
 CAAATGAGAATCTGCATGAGCTAGACTGAGTAACAGCAAACCTCATGCTTCTCTGTGAAGGGTCTCTG
 TCTTGCCTGAAAAATCCAAGATGCAAAGTCCAGAACTGACGTGCAAATCGGTAACCTCTGAGTGGGT
 CTGCAGGACCTCATTATTGCCCTCAGGGTAACAGCAAGCTGACCCATCTGAACCTCAGCTCAACAAGC
 TGGGAATGACTGTCCCCTGATTCTTAAGCTTTGAGACACTCAGCTTGAACCTCAAGTATCTGTGCC
 GGAGAAATGCAACTTGTGGCAGCCAGCTGTCAGGACCTAGCCTTGTCTTCCAGCAGTCAACACGTA
 ACTCGATTGTGCCTGGGATTTAATCGGCTCCAAGATGATGGCATAAAGCTATTGTGTGGCCCTGACTC
 ACCCCAAGTGTGCCTTAGAGAGACTGGAGCTCTGGTTTTGCCAGCTGGCAGCACCCGCTTGAAGCACTT
 GTCAGATGCTCTCCTGCAGAACAGGAGCCTGACACACCTGAATCTGAGCAAGAACAGCCTGAGAGACGAG
 GGAGTCAAGTTCTCTGTGTGAGGCCTTGGGTGCGCCAGATGGTAACCTGCAGAGCCTGAATTTGTCAGGT
 GTTCTTTCACAAGAGAGGGCTGTGGAGAGCTGGCTAATGCCCTCAGCCATAATCATAATGTGAAAATCTT
 AGATTTGGGAGAAAATGATCTTCAGGATGATGGAGTGAAGCTACTGTGTGAGGCTCTGAAACCACATCGT
 GCATTGCACACTTGGGTTGGCGAAATGCAATCTGACAACTGCTTGTGCCAGCATCTCTCTCTGTTC
 TCAGCAGCAGTAAGAGCCTGGTCAATCTGAACCTTCTAGGCAATGAATTGGATACTGATGGTGTCAAGAT
 GCTATGTAAGGCTTTGAAAAGTCGACATGCAGGCTGCAGAACTCGGG

ACGCGTACGCGGCCGCTCGAG - GFP Tag - GTTTAA

Protein Sequence:

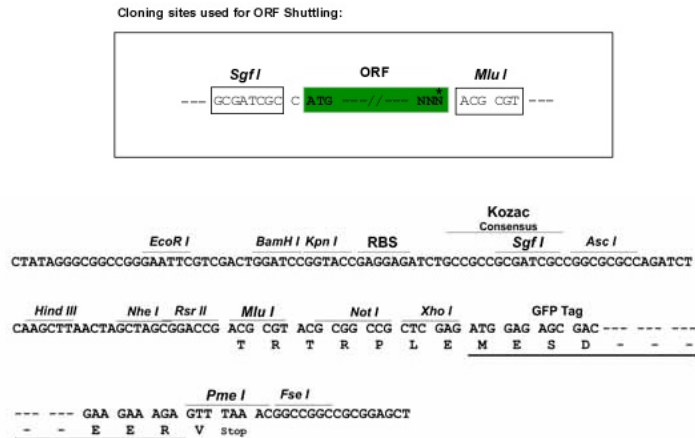
>RG215145 representing NM_176810
 Red=Cloning site Green=Tags(s)

MNFSVITCPNGGTNQGLLPYLMALDQYQLEEFKLCLEPQQLMDFWSAPQGHFPRIPWANLRAADPLNLSF
 LLDEHFPKQAWKVVLGIFQTMNLTSLCEKVAEMKENVQTQELQDPTQEDLEMLEAAAAGNMQTQGCQDP
 NQEELDELEEETGNVQAQGCQDPNQEEPEMLEEADHRRKYRENKAELETTWDNISWPKDHVYIRNTSKD
 EHEELQRLLDPNRTRAQAQTIVLVGRAGVGKTTLAMQAMLHWANGVLFQQRFSYVFYLSCHKIRYMKETT
 FAELISLDWPDFDAPIIEEFMSQPEKLLFIIDGFEEIIISERSESLDDGSPCTDWYQELPVTKILHSLK
 KELVPLATLLITIKTWFVRDLKASLVNPCFVQITGFTGDDL RVYFMRHFDDSSSEVEKILQQLRKNETLH
 SCSAPMVCWTVCSCLKQPKVRYDLQSIQTSTSLYAYFFSNLFTAEDLADDSWPQWRALCSLAIEG
 LWSMNFNFNKEDTEIEGLEVPFIDSLYEFNILQKINDCGGCTTFTHLSFQEFFAAMSFVLEEPREFPPHS
 TKPQEMKMLLQHVLLDKEAYWTPVVLFFGLLNKNIARELEDTLHCKISPRVMEELLKWGEELGKAESAS
 LQFHILRFLHCHLESQEEDFTKKMLGRIFEVDLNIIEDEELQASSFCLKHCKRLNKLRLSVSSHILERDL
 EILETSKFDSDRMHAWNSICSTLVTNENLHELDSLNSKLAHSSVKGLCLALKNPRCKVQKLTCKSVTPPEWV
 LQDLIIALQGNSKLTHLNFSSNKLGMTVPLILKALRHSACNLKYLCLEKCNLSAASCQDLALFLTSIQHV
 TRLCLGFNRLQDDGIKLLCAALTHPKCALERLELWFCQLAAPACKHLSDALLQNRSLTHLNL SKNSLRDE
 GVKFLCEALGRPDGNLQSLNLSGCSFTREGCGELANALSHNHNVKILDLGENDLQDDGVKLLCEALKPHR
 ALHTLGLAKCNLTTACQHLFVSLSSSKSLVNLNLLGNELDTDGVKMLCKALKKSTCRLQLKG

TRTRPLE - GFP Tag - V

Restriction Sites:

SgfI-MluI

Cloning Scheme:


ACCN: NM_176810

ORF Size: 3129 bp

OTI Disclaimer: The molecular sequence of this clone aligns with the gene accession number as a point of reference only. However, individual transcript sequences of the same gene can differ through naturally occurring variations (e.g. polymorphisms), each with its own valid existence. This clone is substantially in agreement with the reference, but a complete review of all prevailing variants is recommended prior to use. [More info](#)

OTI Annotation: This clone was engineered to express the complete ORF with an expression tag. Expression varies depending on the nature of the gene.

Components: The ORF clone is ion-exchange column purified and shipped in a 2D barcoded Matrix tube containing 10ug of transfection-ready, dried plasmid DNA (reconstitute with 100 ul of water).

Reconstitution Method:

1. Centrifuge at 5,000xg for 5min.
2. Carefully open the tube and add 100ul of sterile water to dissolve the DNA.
3. Close the tube and incubate for 10 minutes at room temperature.
4. Briefly vortex the tube and then do a quick spin (less than 5000xg) to concentrate the liquid at the bottom.
5. Store the suspended plasmid at -20°C. The DNA is stable for at least one year from date of shipping when stored at -20°C.

RefSeq: [NM_176810.1](#), [NP_789780.1](#)

RefSeq Size: 3132 bp

RefSeq ORF: 3132 bp

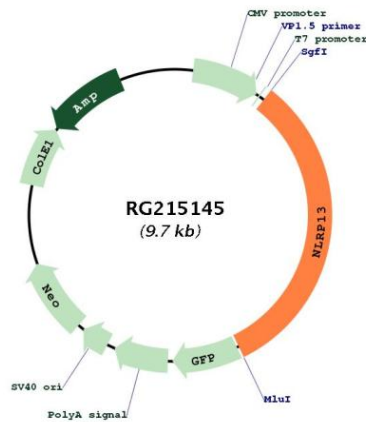
Locus ID: 126204

UniProt ID: [Q86W25](#)

Cytogenetics: 19q13.43

Gene Summary: This gene encodes a member of the NACHT, leucine rich repeat, and PYD containing (NLRP) protein family. It has an N-terminal pyrin domain, followed by a NACHT domain, a NACHT-associated domain (NAD), and a C-terminal leucine-rich repeat (LRR) region. NLRP proteins are implicated in the activation of proinflammatory caspases through multiprotein complexes called inflammasomes. Alternative splicing results in multiple transcript variants encoding different isoforms. [provided by RefSeq, Mar 2016]

Product images:



Circular map for RG215145