

Product datasheet for **RG213835**

ATP2B4 (NM_001684) Human Tagged ORF Clone

Product data:

Product Type:	Expression Plasmids
Product Name:	ATP2B4 (NM_001684) Human Tagged ORF Clone
Tag:	TurboGFP
Symbol:	ATP2B4
Synonyms:	ATP2B2; MXRA1; PMCA4; PMCA4b; PMCA4x
Mammalian Cell Selection:	Neomycin
Vector:	pCMV6-AC-GFP (PS100010)
E. coli Selection:	Ampicillin (100 ug/mL)
ORF Nucleotide Sequence:	>RG213835 representing NM_001684 Red=Cloning site Blue=ORF Green=Tags(s)

TTTTGTAATACGACTCACTATAGGGCGCCGGGAATTCGTCGACTGGATCCGGTACCGAGGAGATCTGCC
GCC**CGATCGCC**

ATGACGAACCCATCAGACCGTGTCTTGCCTGCCAACTCGATGGCCGAGAGCCGTGAAGGGGACTTTGGCT
GCACAGTAATGGAAGTGAAGGCTCATGGAGCTGCGTTCAAGGGATGCACTGACCCAGATTAATGTCCA
CTATGGAGGTGTACAGAATCTCTGCAGTAGACTGAAAACCTCCCTGTGGAAGGTCTGTCTGGAAACCT
GCAGATCTGGAGAAACGTAGGCAGGTGTTGGACACAACGTGATCCCCCAGAAAGCCCAAGACTTTCT
TAGAATTAGTGTGGGAAGCTCTCAAGATGTCACGCTCATCATCTGGAGATTGCAGCCATCATCTCCCT
GGTCTGTCTTTATCGCCCTGCTGGTGAAGAAAATGAACTGTGTGGTCAAGTCGCAACTACCCAGAA
GATGAAAATGAGGCACAAGCTGGCTGGATTGAGGGGCGAGCCATCCTTTTCTCAGTGATCATCGTGGTGT
TAGTGACTGCCTTTAATGATTGGAGCAAAGAGAAGCAATTCGGGGGCTGCAAGTCCGCAATTGAACAGGA
GCAAAAGTTCTCCATCATCCGAAACGGTCAACTCATCCAGCTCCCTGTGGCTGAGATTGTGGTGGTGTGAT
ATTGCCAAGTCAAATACGGTGTCTGCTGCCTGCAGATGGAATCCTGATCCAAGGAATGATCTGAAGA
TTGATGAGAGCTCTGACAGGGGAATCTGACCATGTCAAGAAGTCCCTGGACAAAGACCCCATGTTGCT
CTCAGGGACCCATGTCATGGAAGTCTGGCCGGATGGTGGTACAGCTGTTGGTGTCAACTCTCAGACT
GGAATCATCTTACTCTTGGGGTCAATGAGGATGACGAAGGGGAGAAAAAGAAGAAAGTAAAAAAC
AAGGAGTCCCTGAAAATCGCAACAAGCAAAGACCAAGACGGAGTGGCCCTGGAATCCAGCCACTCAA
CAGCCAGGAGGGAATCGACAATGAGGAAAAGGACAAGAAGGCAGTCAAGTGCCTAAAAAGGAGAAGTCA
GTGCTGCAGGGCAAGCTGACTCGCTGGCTGTTGAGATTGGAAAAGCCGGTCTGCTCATGTCTGCTCTCA
CGGTTTTATCTGATTCTATACTTTGTGATTGACAACCTTTGTGATAAATCGCAGACCATGGCTCCCTGA
GTGACTCCCATCTACATCCAGTACTTTGTCAAGTTCTTCATCATCGGCATCACTGTACTGGTGGTGGCT
GTGCCAGAGGGGCTGCCTCTGGCTGTACCATCTCACTGGCTACTCTGTGAAGAAAATGATGAAAGACA
ATAACCTAGTACGGCACTTGGATGCTTGTGAGACCATGGGCAACGCCACCGCCATCTGCTCTGATAAGAC
AGGCACGTTGACCATGAACCGCATGACTGTGGTACAAGCTTATATTGGGGCATCCATTACCGTCAAATC



[View online >](#)

CCAAGCCCTGATGTCTTCTGCCCCAAAGTCTGGACCTCATTGTCAATGGCATTCTATCAACAGTGCTT
ATACCTCCAAGATTCTGCCTCCAGAGAAGGAGGGAGGCCTGCCTCGGCAGGTGGGCAACAAGACCGAGTG
TGCTCTGTAGGCTTTGTACAGATCTGAAGCAGGATTATCAGGCTGTGCGTAATGAAGTGCCCCGAGGAG
AAGCTCTACAAGGTGTACACCTTAACTCAGTGCAGCAAGTCAATGAGCACCGTCATCAGGAATCCCAACG
GTGGCTCCGTATGTACAGCAAGGGCGCCTCTGAGATCATCTTGCAGCAAGTGAATCGAATCCTGGACCG
GAAAGGGGAAGCAGTGCCATTCAAGAATAAAGACAGAGATGATATGGTACGCACTGTCATCGAGCCCATG
GCCTGTGATGGACTCCGGACTATCTGCATAGCTTACCGGGACTTCGATGACACAGAGCCCTCTTGGGAGA
ATGAGAATGAGATCCTCACCGAACTGACCTGTATCGCGGTGGTGGGCATTGAGGACCCTGTGCGCCAGA
GGTGCCAGATGCTATTGCCAAATGCAAACAAGCTGGCATTACTGTGAGAATGGTACAGGTGACAACATC
AACACAGCCCGGGCCATTGCCACCAATGTGGCATTCTGACACCTGGGGATGACTTCTGTGCTTAGAAG
GCAAAGAATCAACCGGCTCATCCGCAACGAGAAAGGCGAGGTAGAGCAAGAAAAGCTGGACAAGATCTG
GCCTAAGCTTCGGGTCTGGCGCATCTTCTCCACTGACAAGCACACCCTGGTAAAGGCATAATTGAC
AGCACTGTTGGGAACACCGGCAGGTCTGGCTGTCACTGGTGTGACACAAATGACGGGCTGCTCTGA
AGAAAGCGGATGTTGGTTTTGCCATGGGCATCGCAGGCACAGATGTAGCAAAGGAGGCTTCAGACATCAT
CCTAACAGATGACAACCTCACCAGCATTGTGAAGGCAGTGTGTTGGGACGAAATGTCTATGACAGCATC
TCCAAGTTCCTGCAGTTCAGCTCACTGTCAATGTGGTGGCCGTATTGTAGCCTCACTGGAGCCTGTA
TCACTCAGGATCCCCATTGAAAGCTGTGCAGATGTTGTGGGTTAATCTGATCATGGACACTTTTGTCTC
ATTGGCCCTGGCCACAGAGCCCCCTACGGAATCTCTGTTGAAGCGGCGCCCTATGGCCGAAATAAGCCT
CTGATCTCACGCACTATGATGAAGAATCTTGGGCCATGCATTCTATCAGCTCATTGTCATCTTTATCC
TTGTCTTTCGGGTGAGAAATCTTTGATATTGATAGTGGGAGGAAGGCACCTCTACATTCACCACCCAG
CCAGCACTATACCATTGTTTTAACACCTTCGTGCTGATGCAGCTCTTCAATGAAATCACTCCCGAAAG
ATCCATGGAGAGAAGAAGCTCTTTTCAGGCATCTACCGCAACATTATCTTCTGCTCTGTAGTCTTGGCA
CATTCTGTCAGATTTTCATCGTGAATTTGGGGTAAACCCTCAGTTGTACAAGCCTCAGCCTGTC
TCAGTGGCTGTGGTGTCTTTCATTGGGATTGGAGAATTCTGTGGGGCCAGTTCATCTCCGAATACCT
ACCCGATCCCTGAAGTTCCTGAAGGAGGCTGGGCATGGCACCAACAAAGAGGAGATCACCAAGGATGCCG
AGGGACTGGATGAGATTGACCATGCTGAGATGGAGCTGCGCCGAGGCCAGATCCTCTGGTCCGGGGCCT
GAACCGTATCCAGACTCAGATCAAAGTGGTCAAAGCGTTCATAGTTCCTCCACGAAAGCATTGAGAAA
CCCTACAACCAAAAGTCCATCCACAGCTTCATGACCCACCCTGAATTCGCCATAGAGGAGGAGTTGCCAC
GAACACCACTCCTGGATGAGGAAGAGGAGGAAAATCCTGACAAGGCTTCTAAGTTTGGGACTAGGGTGT
CCTGTTGGATGGTGAAGTCACTCCATATGCCAATACAAACAACAATGCGGTGGATTGCAACCAAGTGCAG
CTCCCCAGTCGGACAGCTCTCTACAGAGCCTAGAGACATCAGTT

ACGCGTACGCGGGCCGCTCGAG - GFP Tag - GTTTAA

Protein Sequence: >RG213835 representing NM_001684
 Red=Cloning site Green=Tags(s)

```

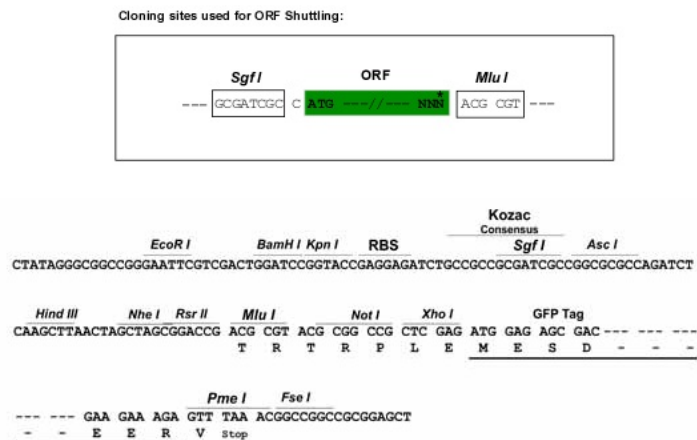
MTNPSTRVLPANSMAESREGDFGCTVMELRKLMELELRSDALTQINVHYGGVQNLCSRLKTSPEVGLSGNP
ADLEKRRQVFGHNVIPPKPKTFLELVWEALQDVTLIILEIAAIIISLVSFYRPAGEENELCGQVATTPE
DENAQAQAGWIEGAAILFSVIIIVLVTAFNDSKEKQFRGLQCRIEQEQKFSIIRNGQLIQLPVAEIVVGD
IAQVKYGDLLPADGILIQNDLKIDESSLTGESDHVKKSLDKDPMMLSGTHVMEGSGRMVTVAVGVNSQT
GIILTLLGVNEDDEGEKKKKGKQGVPENRNKAQTQDGVALEIQPLNSQEGIDNEEKDKKAVKVPKKEKS
VLQGKLRVAVQIGKAGLLMSALTVFVILILYFVIDNFVINRRPWLPECTPIYIQYFVKFFIIGITVLVVA
VPEGLPLAVTISLAYSVKMMKDNLLVRHLDACETMGNATAICSDKTGTLTMNRMTVVQAYIGGIHYRQI
PSPDVFLPKVLDLIVNGISINSAYTSKILPPEKEGGLPRQVGNKTECALLGFVTDLKQDYQAVRNEVPPE
KLYKVVTFNSVRKSMSTVIRNPNGGFRMYSKGASEIILRKCNRILDRKGEAVPFKNKDRDDMVRTVIEPM
ACDGLRTICIAYRDFDDETPSWDNENEILTELTCIAVVGIEDPVRPEVPDAIAKCKQAGITVRMVTGDN
NTARAIATKCGILTPGDDFLCLEGKEFNRLIRNEKGEVEQEKLKDWPKLRVLRSSPTDKHTLVKGIID
STVGEHRQVVAVTGDGTNDGPALKKADVGFAMGIAGTDVAKEASDIILTDDNFTSIVKAVMWGRNVYDSI
SKFLQFQLTVNVVAVIVAFVAGTITQDSPLKAVQMLWVNLIMDTFASLALATEPPTESLLKRRPYGRNKP
LISRTMMKNILGHAFYQLIVIFILVFAGEKFFDIDSGRKAPLHSPPSQHYTIVFNTFVLMQLFNEINSRK
IHGEKNVFSGIYRNIIFCSVVLGTFICQIFIVEFGGKPFSTLSLSQWLWCLFVIGIGELLWQGFISAIP
TRSLKFLKEAGHTTKEEITKDAEGLDEIDHAEMELRRGQILWFRGLNRIQTQIKVVKAFHSSLHESIQA
PYNQKSIHSFMTHPEFAIEEELPRTPLLDEEEENPDKASKFTRVLLLDGEVTPYANTNNNAVDCNQVQ
LPQSDSSLQSLQSV
  
```

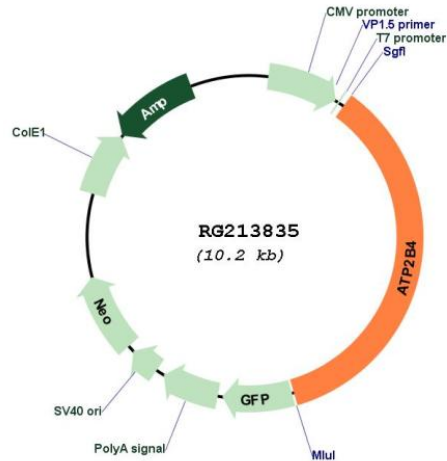
TRTRPLE - GFP Tag - V

Restriction Sites:

SgfI-MluI

Cloning Scheme:



Plasmid Map:


ACCN: NM_001684

ORF Size: 3615 bp

OTI Disclaimer: The molecular sequence of this clone aligns with the gene accession number as a point of reference only. However, individual transcript sequences of the same gene can differ through naturally occurring variations (e.g. polymorphisms), each with its own valid existence. This clone is substantially in agreement with the reference, but a complete review of all prevailing variants is recommended prior to use. [More info](#)

OTI Annotation: This clone was engineered to express the complete ORF with an expression tag. Expression varies depending on the nature of the gene.

Components: The ORF clone is ion-exchange column purified and shipped in a 2D barcoded Matrix tube containing 10ug of transfection-ready, dried plasmid DNA (reconstitute with 100 ul of water).

Reconstitution Method:

1. Centrifuge at 5,000xg for 5min.
2. Carefully open the tube and add 100ul of sterile water to dissolve the DNA.
3. Close the tube and incubate for 10 minutes at room temperature.
4. Briefly vortex the tube and then do a quick spin (less than 5000xg) to concentrate the liquid at the bottom.
5. Store the suspended plasmid at -20°C. The DNA is stable for at least one year from date of shipping when stored at -20°C.

RefSeq: [NM_001684.3](#), [NP_001675.3](#)

RefSeq Size: 8733 bp

RefSeq ORF: 3618 bp

Locus ID: 493

UniProt ID: [P23634](#)

Cytogenetics: 1q32.1

Domains:	E1-E2_ATPase, Cation_ATPase_N, Hydrolase, Cation_ATPase_C
Protein Families:	Druggable Genome, Transmembrane
Protein Pathways:	Calcium signaling pathway
Gene Summary:	<p>The protein encoded by this gene belongs to the family of P-type primary ion transport ATPases characterized by the formation of an aspartyl phosphate intermediate during the reaction cycle. These enzymes remove bivalent calcium ions from eukaryotic cells against very large concentration gradients and play a critical role in intracellular calcium homeostasis. The mammalian plasma membrane calcium ATPase isoforms are encoded by at least four separate genes and the diversity of these enzymes is further increased by alternative splicing of transcripts. The expression of different isoforms and splice variants is regulated in a developmental, tissue- and cell type-specific manner, suggesting that these pumps are functionally adapted to the physiological needs of particular cells and tissues. This gene encodes the plasma membrane calcium ATPase isoform 4. Alternatively spliced transcript variants encoding different isoforms have been identified. [provided by RefSeq, Jul 2008]</p>