

Product datasheet for **RG213673**

ASD3 (MYH6) (NM_002471) Human Tagged ORF Clone

Product data:

Product Type:	Expression Plasmids
Product Name:	ASD3 (MYH6) (NM_002471) Human Tagged ORF Clone
Tag:	TurboGFP
Symbol:	MYH6
Synonyms:	alpha-MHC; ASD3; CMD1EE; CMH14; MYHC; MYHCA; SSS3
Mammalian Cell Selection:	Neomycin
Vector:	pCMV6-AC-GFP (PS100010)
E. coli Selection:	Ampicillin (100 ug/mL)
ORF Nucleotide Sequence:	>RG213673 representing NM_002471 Red=Cloning site Blue=ORF Green=Tags(s)

TTTTGTAATACGACTCACTATAGGGCGGCCGGAATTCGTCGACTGGATCCGGTACCGAGGAGATCTGCC
GCC**CGATCGCC**

ATGACCGATGCCAGATGGCTGACTTTGGGGCAGCGGCCAGTACCTCCGCAAGTCAGAGAAGGAGCGTC
TAGAGGCCAGACCCGGCCCTTTGACATTCGCACTGAGTGCTTCGTGCCGATGACAAGGAAGAGTTTGT
CAAAGCCAAGATTTTGTCCCGGGAGGGAGGCAAGGTCAATTGCTGAAACCGAGAATGGGAAGACGGTGACT
GTGAAGGAGGACCAGGTGTTGCAGCAGAACCCACCAAGTTCGACAAGATTGAGGACATGGCCATGCTGA
CCTTCCTGCACGAGCCCGCGGTGCTTTCAACCTCAAGGAGCGCTACGCGCCTGGATGATATATACCTA
CTCGGGCCTCTTCTGTGTCAGTCAACCCCTACAAGTGCTGCCGGTGTACAATGCCGAGGTGGTGCC
GCCTACCGGGCAAGAAGAGGAGTGAGGCCCGCCACATCTTCTCCATCTCCGACAACGCCTATCAGT
ACATGCTGACAGATCGGGAGAACCAGTCCATCCTCATCACGGGAGAATCCGGGGCGGGGAAGACTGTGAA
CACCAAGCGTGTCCAGTACTTTGCCAGCATTGCAGCCATAGGTGACCGTGCCAAGAAGGACAATGCC
AATGCGAACAAGGGCACCTGGAGGACCAGATCATCCAGGCCAACCCGCTCTGGAGGCCTTCGGCAATG
CCAAGACTGTCCGGAACGACAACCTCCCGCTTTGGGAAATTCATTAGGATCCACTTTGGGGCCACTGG
AAAGCTGGCTTCTGCAGACATAGAGACCTACCTGCTGGAGAAGTCCCGGGTGATCTTCCAGCTGAAAGCT
GAGAGAACTACCACATCTTCTACCAGATTCTGTCCAACAAGAAGCCGGAGTTGCTGGACATGCTGCTGG
TCACCAACAATCCCTACGACTACGCTTCGTGTCTCAGGGAGAGGTGTCGGTGGCCTCCATTGACTC
CGAGGAGCTCATGGCCACCGATAGTGCCTTTGACGTGCTGGGCTTCACTTCAAGAGGAGAAAGCTGGCGTC
TACAAGCTGACGGGAGCCATCATGCACTACGGGAACATGAAGTTCAAGCAGAAGCAGCGGGAGGAGCAGG
CGGAGCCAGACGGCACCGAAGATGCTGACAAGTCGGCCTACCTCATGGGGCTGAACTCAGCTGACCTGCT
CAAGGGGCTGTGCCACCCTCGGGTGAAGTGGGCAACGAGTATGTCACCAAGGGGAGAGCGTGCAGCAG
GTGTACTACTCCATCGGGCTCTGGCCAAGGCAGTGTATGAGAAGATGTTCAACTGGATGGTGACGCGCA
TCAACGCCACCCTGGAGACCAAGCAGCCACGCCAGTACTTCATAGGAGTCTGGACATCGCTGGCTTCGA
GATCTTCGACTTCAACAGCTTTGAGCAGCTCTGCATCAACTTCACCAACGAGAAGCTGCAGCAGTCTTC



AACCACCACATGTTCTGCTGGAGCAGGAGGAGTACAAGAAGGAGGGCATTGAGTGGACATTCATTGACT
TTGGCATGGACCTGCAGGCTGCATTGACCTCATCGAGAAGCCATGGGCATCATGTCCATCCTGGAGGA
GGAGTGCATGTTCCCAAGGCCACTGACATGACCTTCAAGGCCAAGCTGTACGACAAACCCTGGGCAAG
TCCAACAATTTCCAGAAGCCACGCAACATCAAGGGGAAGCAGGAAGCCACTTCTCCCTGATCCACTACG
CCGGCACTGTGGACTACAACATCCTGGGCTGGCTGGAAAAACAAGGATCCTCTCAACGAGACTGTTGT
GGCCCTGTACCAGAAGTCTCCCTCAAGCTCATGGCCACTCTCTCTCCCTACGCAACTGCCGATACT
GGGCAAGTGGTAAAAGCAAAGGAGGCAAGAAAAAGGGTCACTCCCTCCAGACGGTGCCTCCACC
GGGAAAACTCAACAAGCTAATGACCAACCTGAGGACCACCCATCCTCACTTTGTGCGTTGCATCACC
CAATGAGCGGAAGGCTCCAGGGTGATGGACAACCCCTGGTCATGCACCAGCTGCGCTGCAATGGCGTG
CTGGAGGGCATCCGCATCTGCAGGAAGGGCTTCCCAACCGCATCCTCTACGGGGACTTCCGGCAGAGGT
ATCGCATCCTGAACCCAGTGGCCATCCCTGAGGGACAGTTCATTGATAGCAGGAAGGGGACAGAGAAGCT
GCTCAGCTCTCTGGACATTGATCACAACCAAGTACAAGTTGGCCACCAAGGTGTTCTTCAAGGCAGGG
CTGCTTGGGCTGCTGGAGGAGATGCGGGATGAGAGGCTGAGCCGCATCATCACGCGCATGCAGGCCAAG
CCCGGGCCAGCTCATGCGCATTGAGTTCAAGAAGATAGTGGAACGCAGGGATGCCCTGCTGGAATCCA
GTGGAACATTCGGGCCTTCATGGGGTCAAGAATTGGCCCTGGATGAAGCTCTACTTCAAGATCAAGCCG
CTGCTGAAGAGCCAGAGACGGAGAAGGAGATGGCCACCATGAAGGAAGAGTTCCGGGCGCATCAAAGAGA
CGCTGGAGAAGTCCGAGGCTCGCCGCAAGGAGCTGGAGGAGAAGATGGTGTCCCTGCTGCAGGAGAAGAA
TGACCTGCAGCTCCAAGTGCAGGCGGAACAAGACAACCTCAATGATGCTGAGGAGCGCTGCGACCAGCTG
ATCAAAAAACAAGATTCAGCTGGAGGCCAAAGTAAAGGAGATGAATGAGAGGCTGGAGGATGAGGAGGAGA
TGAACGCGGAGCTCACTGCCAAGAAGCGCAAGCTGGAAGACGAGTGTCTCAGAGCTCAAGAAGGACATTGA
TGACCTGGAGCTGACACTGGCCAAGGTGGAGAAGGAGAAGCATGCAACAGAGAACAAGGTGAAGAACCTA
ACAGAGGAGATGGCTGGGCTGGATGAAATCATCGCTAAGCTGACCAAGGAGAAGAAAGCTCAACAAGAGG
CCCATCAGCAGGCCCTGGATGACCTTCAAGTTGAGGAAGACAAGTCAACAGCCTGTCCAAGTCTAAGGT
CAAGCTGGAGCAGCAGGTGGATGATCTGGAGGGATCCCTAGAGCAAGAGAAGAAGGTGCGCATGGACCTG
GAGCGAGCAAAGCGAAAAGTGGAGGGCGACCTGAAGCTGACCCAGGAGAGCATCATGGACCTGGAAGATG
ATAAACTGCAGCTGGAAGAAAAGCTTAAGAAGAAGGAGTTTGACATTAATCAGCAGAACAGTAAGATTGA
GGATGAGCAGGTGCTGGCCCTTCAACTACAGAAGAAAAGTGAAGGAAAACCAGGCACGCATCGAGGAGCTG
GAGGAGGAGCTGGAGGCCGAGCGCACCCGACGGGCTAAGGTGGAGAAGCTGCGCTCAGACCTGTCTCGGG
AGCTGGAGGAGATCAGCGAGCGGCTGGAAGAGGCCGCGGGGCCAGCTCCGTGCAGATCGAGATGAACAA
GAAGCGCAGGCGGAGTCCAGAAGATGCGGCGGGACCTGGAGGAGGCCACGCTGCAGCACGAGGCCACT
GCCGCGGCCCTGCGCAAGAAGCACGCCGACAGCTGGCCGAGCTGGCGGAGCAGATCGACAACCTGCAGC
GGGTGAAGCAGAAGCTGGAGAAGGAGAAGAGCGAGTTCAAGCTGGAGCTGGATGACGTCACCTCCAACAT
GGAGCAGATCATCAAGGCCAAGGCAAACCTGGAGAAAAGTGTCTCGGACGCTGGAGGACCAGGCCAATGAG
TACCGCGTGAAGCTAGAAGAGGCCAACGCTCCCTCAATGATTTACCACCCAGCGAGCCAAGCTGCAGA
CCGAGAAATGGAGAGTTGGCCCGGAGCTAGAGGAAAAGGAGGCGTAATCTCGCAGCTGACCCGGGGGAA
GCTCTCTTATACCCAGCAAAATGGAGGACCTCAAAGGCAGCTGGAGGAGGAGGGCAAGGCCAAGAAGCC
CTGGCCCATGCACTGCAGTCGGCCCGCATGACTGCGACCTGTGCGGGAGCAGTACGAGGAGGAGACAG
AGGCCAAGGCCGAGCTGCAGCGGCTCCTGTCCAAGGCCAACTCGGAGGTGGCCAGTGGAGGACCAAGTA
TGAGACGGACGCCATTCAGCGGACTGAGGAGCTCGAAGAGGCCAAAAAGAAGCTGGCCAGCGGCTGCAG
GATGCCGAGGAGCCGTGGAGGCTGTTAATGCCAAGTGTCTCACTGGAGAAGACCAAGCACCGGCTAC
AGAATGAGATAGAGGACTTGATGGTGGAGCTAGAGCGCTCCAATGCTGCTGCTGCAGCCCTGGACAAGAA
GCAGAGAAAATTTGACAAGATCCTGGCCGAGTGAAGCAGAAGTATGAGGAGTGCAGTCTGAGCTGGAG
TCCTCACAGAAGGAGGCTCGCTCCCTCAGCACAGAGCTTTCAAGCTCAAGAACGCCCTACGAGGAGTCCC
TGGAGCACCTAGAGACCTTCAAGCGGGAGAACAAGAACCTTCAAGGAGAAATCTCGGACCTTACTGAGCA
GCTAGGAGAAGGAGGAAAGAATGTGCATGAGCTGGAGAAGGTCCGCAACAGCTGGAGGTGGAGAAGCTG
GAGCTGCAGTCAAGCCTGGAGGAGCAGAGGCCCTCCCTGGAGCACGAGGAGGGCAAGATCCTCCGGGCC
AGCTAGAGTTCAACCAGATCAAGGCAGAGATCGAGCGGAAGCTGGCAGAGAAGGACGAGGAGATGGAACA
GGCCAAGCGCAACCACCGCGGTGGTGGACTCGCTGCAGACCTCCCTGGATGCAGAGACACGCAGCCGC
AACGAGGTCTGAGGGTGAAGAAGAAGATGGAAGGAGACCTCAATGAGATGGAGATCCAGCTCAGCCACG
CCAACCGCATGGCTGCCGAGGCCAGAAGCAAGTCAAGAGCCTCCAGAGCTTGTGAAGGACACCCAGAT
CCAGCTGGACGATGCGGTCCGTGCCAACGACGACCTGAAGGAGAACATCGCCATCGTGGAGCGGCCAAC
AACCTGCTGCAGGCTGAGCTGGAGGAGCTGCGTGCCGTGGTGGAGCAGACAGAGCGGTCCCGAAGCTGG

CGGAGCAGGAGCTGATTGAGACCAGCGAGCGGGTGCAGCTGCTGCATTCCCAGAACCAGCCTCATCAA
 CCAGAAGAAGAAGATGGAGTCGGATCTGACCCAGCTCCAGTCGGAAGTGGAGGAGGCAGTGCAGGAGTGC
 AGAAACGCCGAGGAGAAGGCCAAGAAGGCCATCACGGATGCCGCCATGATGGCAGAGGAGCTGAAGAAGG
 AGCAGGACACCAGCGCCACCTGGAGCGCATGAAGAAGAACATGGAGCAGACCATTAAGGACCTGCAGCA
 CCGGCTGGACGAGGCCGAGCAGATCGCCCTCAAGGGAGGCAAGAAGCAGCTGCAGAAGCTGGAAGCGCGG
 GTGCGGGAGCTGGAGGGTGAAGTGGAGGCCGAGCAGAAGCGCAACGCAGAGTCGGTGAAGGGCATGAGGA
 AGAGCGAGCGGCCATCAAGGAGCTCACCTACCAGACAGAGGAAGACAAAAAGAACCTGCTGCGGCTACA
 GGACCTGGTGGACAAGCTGCAACTGAAGGTCAAGGCCTACAAGCGCCAGGCCGAGGAGGCGGAGGACAA
 GCCAACCAACCTGTCCAAGTTCGCAAGGTGCAGCATGAGCTGGATGAGGCAGAGGAGCGGGCGGACA
 TCGCTGAGTCCCAGGTCAACAAGCTTCGAGCCAAGAGCCGTGACATTGGTCCAAGCAAAAAATGCACGA
 TGAGGAG

ACGCGTACGCGGCCGCTCGAG - GFP Tag - GTTTAA

Protein Sequence:

>RG213673 representing NM_002471

Red=Cloning site Green=Tags(s)

MTDAQMADFGAAQYLRKSEKERLEAQRPFDIRTECFVDDKEEFVKAKILSREGGKVI AETENGKTVT
 VKEDQVLQONPPKFDKIEDMAMLTFLHEPAVLFNLKERYAAWMIYTYSGLFCVTVNPKWLPVYNAEVVA
 AYRGGKRSEAPPHIFSIDNAYQYMLTDRENQSILITGESGAGKTVNTRKVIQYFASIAAIGDRGKKDNA
 NANKGTLEDQIIQANPALEAFGNAKTVRNDNSSRFGKFIIRIHFGATGKLASADIETYLLEKSRVIFQLKA
 ERNYHIFYQILSNKKPELLDMLLVNPNPYDYAFVSQGEVSVASIDDSEELMATDSAFDVLGFTSEEKAGV
 YKLTGAIMHYGNMKFKQKQREEQAEPEGDTEADK SAYLMGLNSADLLKGLCHPRVKVGNVYVTKGQSVQQ
 VYYSIGALAKAVYEKMFNWMVTRINATLETKPRQYF IGVLDIAGFEIFDFNSFEQLCINFNTEKIQQFF
 NHHMFVLEQEEYKKEGIEWTFIDFGMDLQACIDLIEKPMGIMSILEEECMFPKATDMTFKAKLYDNHLGK
 SNNFQKPRNIKQKQEAHFSLIHYAGTVDYNILGWLEKNKDPLNETVVALYQKSSLKLMATLFSSYATADT
 GDGSGKSKGGKGGSSFTVSALHRENKLMNTLRTTHPHFVRCIIPNERKAPGVMNDPLVMHQLRCNGV
 LEGIRICRKGFPNRILYGDFRQRYRILNPVAIPEGQFIDSRKGTAKLSSLDIDHNQYKFGHTKVFVKAG
 LLGLLEEMRDERLSRIITRMQAQARGQLMRIEFKKIVERRDALLVIQWNIRAFMGVKNWPWMLYFKIKP
 LLKSAETEKEMATMKEEFGRIKETLEKSEARRKELEEKMSVLLQEKNLQLQVQAEQDNLNDAEERCDQL
 IKNKIQLEAKVKEMNERLEDEEEMNAELTAKKRKLEDECESEKDDIDDLTLAKVEKEKHATENKVKNL
 TEEMAGLDEIIAKLTKEKKALQEAHQALDDLQVEEDKVNSLSKSKVKLEQQVDDLEGSLEQEKVVRMDL
 ERAKRKLEGLDLTQESIMDLENDKLQLEEKLKKKEFDINQNSKIEDEQVLAQLQKKLKENQARIEEL
 EEELEAERTARAKVEKLRSDLRELEEISERLEEAGGATSVQIEMNKKREAEFQKMRRDLEEATLQHEAT
 AAALRKKHADSVAELGEQIDNLQRVKQKLEKEKSEFKLELDDVTSNMEQIIKAKANLEKVSRTLEDQANE
 YRVKLEEAQRSLNDFTTQRAKLQTENGELARQLEEKEALISQLTRGKLSYTOQMEDLKRQLEEEGKAKNA
 LAHALQ SARHDCDLLREQYEEETEAKAELQRVLSKANSEVAQWRTKYETDAIQRTEEEAKKLAQRLQ
 DAEAAVEAVNAKCSSLEKTKHRLQNEIEDLMVDVERSNAAAAALDKKQRNFDKILAEWKQKYEEESQSELE
 SSQKEARSLSTELFKLKNAYEESLEHLETFKRENKLNQEEISDLTEQLGEGGKNVHELEKVRKQLEVEKL
 ELQSALEEAASLEHEEGKILRAQLEFNQIKAEIERKLAEKDEEMEQAQRNHQRVVDSLQTSLDAETRSR
 NEVLRVKKMEGDLNEMEIQLSHANRMAEAQKQVKSLSLLKDTQIQLDLDAVRANDDLKENIAIVERRN
 NLLQAELEELRAYVEQTERSRLAEQELIETSERVQLLHSQNTSLINQKKMESDLTQLQSEVEEAQVEEC
 RNAEEKAKKAITDAAMMAEELKKEQDTS AHLERMKNMEQTIKDLQHRLDEAEQIALKGGKKQLQKLEAR
 VRELEGELEAEQKRNAESVKGMRKSERRIKELTYQTEEDKKNLLRLQDLVDKQLQKVKAYKRQAEAEAEQ
 ANTNLKFRKVVQHELDEAEERADIAESQVNKLRAKSRDIGAKQKMHDEE

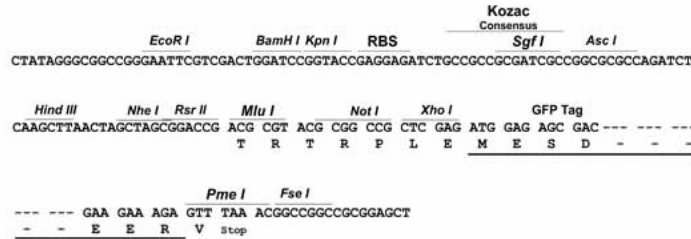
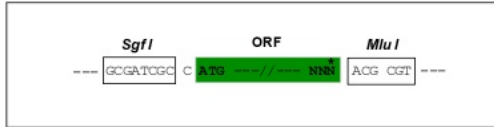
TRTRPLE - GFP Tag - V

Restriction Sites:

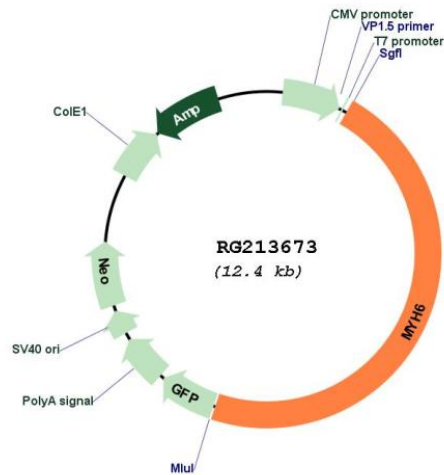
Sgfl-MluI

Cloning Scheme:

Cloning sites used for ORF Shutting:



Plasmid Map:



ACCN: NM_002471
 ORF Size: 5817 bp

OTI Disclaimer:	<p>Due to the inherent nature of this plasmid, standard methods to replicate additional amounts of DNA in E. coli are highly likely to result in mutations and/or rearrangements. Therefore, OriGene does not guarantee the capability to replicate this plasmid DNA. Additional amounts of DNA can be purchased from OriGene with batch-specific, full-sequence verification at a reduced cost. Please contact our customer care team at custsupport@origene.com or by calling 301.340.3188 option 3 for pricing and delivery.</p> <p>The molecular sequence of this clone aligns with the gene accession number as a point of reference only. However, individual transcript sequences of the same gene can differ through naturally occurring variations (e.g. polymorphisms), each with its own valid existence. This clone is substantially in agreement with the reference, but a complete review of all prevailing variants is recommended prior to use. More info</p>
OTI Annotation:	<p>This clone was engineered to express the complete ORF with an expression tag. Expression varies depending on the nature of the gene.</p>
Components:	<p>The ORF clone is ion-exchange column purified and shipped in a 2D barcoded Matrix tube containing 10ug of transfection-ready, dried plasmid DNA (reconstitute with 100 ul of water).</p>
Reconstitution Method:	<ol style="list-style-type: none">1. Centrifuge at 5,000xg for 5min.2. Carefully open the tube and add 100ul of sterile water to dissolve the DNA.3. Close the tube and incubate for 10 minutes at room temperature.4. Briefly vortex the tube and then do a quick spin (less than 5000xg) to concentrate the liquid at the bottom.5. Store the suspended plasmid at -20°C. The DNA is stable for at least one year from date of shipping when stored at -20°C.
RefSeq:	NM_002471.4
RefSeq Size:	5941 bp
RefSeq ORF:	5820 bp
Locus ID:	4624
UniProt ID:	P13533
Cytogenetics:	14q11.2
Protein Pathways:	Cardiac muscle contraction, Dilated cardiomyopathy, Hypertrophic cardiomyopathy (HCM), Tight junction, Viral myocarditis
Gene Summary:	<p>Cardiac muscle myosin is a hexamer consisting of two heavy chain subunits, two light chain subunits, and two regulatory subunits. This gene encodes the alpha heavy chain subunit of cardiac myosin. The gene is located approximately 4kb downstream of the gene encoding the beta heavy chain subunit of cardiac myosin. Mutations in this gene cause familial hypertrophic cardiomyopathy and atrial septal defect 3. [provided by RefSeq, Feb 2017]</p>