

Product datasheet for **RG212945**

ALOXE3 (NM_021628) Human Tagged ORF Clone

Product data:

| | |
|---------------------------|---|
| Product Type: | Expression Plasmids |
| Product Name: | ALOXE3 (NM_021628) Human Tagged ORF Clone |
| Tag: | TurboGFP |
| Symbol: | ALOXE3 |
| Synonyms: | ARCI3; E-LOX; eLOX-3; eLOX3 |
| Mammalian Cell Selection: | Neomycin |
| Vector: | pCMV6-AC-GFP (PS100010) |
| E. coli Selection: | Ampicillin (100 ug/mL) |



[View online »](#)

ORF Nucleotide Sequence:

>RG212945 representing NM_021628
 Red=Cloning site Blue=ORF Green=Tags(s)

TTTTGTAATACGACTCACTATAGGGCGGCCGGAATTCGTCGACTGGATCCGGTACCGAGGAGATCTGCC
 GCC**CGGATCGCC**

ATGGCAGTGTACCGCCTGTGTGTGACCACTGGTCCCTACCTGAGGGCCGGCACACTGGACAACATCTCTG
 TCACACTGGTGGGCACGTGTGGTAAAAGCCCAAGCAGCGGCTAGATCGAATGGGCAGGGACTTCGCCCC
 TGGATCGGTACAGAAGTACAAGGTGCGTTGCACAGCGGAGCTGGGTGAGCTCTTGCTGCTGCGTGTACAC
 AAGGAGCGCTACGCTTTCTCCGCAAGGACTCTTGGTACTGTAGCCGCATCTGTGTACCAGAACCGGATG
 GTAGTGTATCCCCTTCCCCTGCTATCAGTGGATTGAAGGCTACTGCACCGTGGAGCTGAGGCCAGGAAC
 AGCAAGAATAATTTGTCAGGACTCTCTCCCTCCTCCTGGATCACAGGACACGGGAGCTCCGGGCCGA
 CAAGAATGCTACCGCTGGAAGATCTATGCCCTGGCTTCCCCTGCATGGTAGACGTCAACAGCTTTCAGG
 AGATGGAGTCAGACAAGAAATTTGCCTTGACAAGACGACAATTTGTGTAGACCAGGGTACAGCAGTGG
 GAATCGGTACCTGCCCGCTTCCCATGAAATTTGACATCCCCTCCTGATGTACATGGAGCCCAATGTT
 CGATACTCAGCCACCAAGACGATCTCGCTGCTTCAATGCCATCCCTGGCTCCTTGGGAATGAAGCTTC
 GAGGGCTGTTGGATCGCAAGGGCTCCTGGAAGAAGCTGGATGACATGCAGAACATCTTCTGGTGCCATAA
 GACCTTACGACAAAAGTATGTCACAGAGCACTGGTGTGAAGATCACTTCTTTGGGTACCAGTACCTGAAT
 GGTGTCAATCCCCTCATGCTCCACTGCATCTCTAGCTTGGCCAGCAAGCTGCCTGTACCAATGACATGG
 TGGCCCCCTTGTGGGACAGGACACATGCCTGCAGACAGAGCTAGAGAGGGGGAACATCTTCTAGCGGA
 CTACTGGATCCTGGCGGAGGCCACCCACTGCCTAACGGCCGCCAGCAGTACGTGGCCGCCCCACTG
 TGCTGCTGTGGCTCAGCCCCAGGGGGCGTGGTCCCTTGGCCATCCAGCTCAGCCAGACCCCGGGC
 CTGACAGCCCCATCTTCTGCCACTGACTCCGAATGGACTGGCTGCTGGCCAAGACGTGGGTGCGCAA
 CTCTGAGTTCCTGGTGCACGAAAACAACACGCACTTTCTGTGCACGCATTTGCTGTGCGAGGCCTTCGCC
 ATGGCCACGCTGCGCCAGCTGCCGCTCTGCCACCCCATCTACAAGCTCCTACTCCCCCACTCGATACA
 CGCTGCAGGTGAACACCATCGCGAGGGCCACGCTGCTCAACCCGAGGGCCTCGTGGACCAGGTACGCTC
 CATCGGGAGGCAAGGCCTCATCTACCTCATGAGCACGGGCTGGCCACTTACCTACACCAATTTCTGC
 CTTCCGGACAGCCTGCGGGCCCGCGGCTCCTGGCTATCCCCAACTACCACTACCGAGACGAGCCCTGA
 AGATCTGGGCGGCCATTGAGAGCTTTGTCTCAGAAATCGTGGGCTACTATTATCCCAGTGACGCATCTGT
 GCAGCAGGATTCGAGCTGCAGGCCTGGACTGGCGAGATTTTGTCTCAGGCGTTCCTGGCCGGGAAAGC
 TCAGGTTTCCCAAGCCGGCTGTGCACCCAGGAGAGATGGTGAAGTTCTCACTGCAATCATCTTCAATT
 GCTCTGCCAGCAGCTGCTGTCAACAGTGGGCAGCATGACTTTGGGGCCTGGATGCCCAATGCTCCATC
 ATCCATGAGGCAGCCCCACCCAGACCAAGGGGACCACCACCCTGAAGACTTACCTAGACACCCTCCCT
 GAAGTGAACATCAGCTGTAAACCTCCTCCTCTCTGTTGGTTAGCCAAGAACCAAGGACCAGAGGC
 CCCTGGGCACCTACCCAGATGAGCACTTACAGAGGAGGCCCGAGGCGGAGCATCGCCGCTTCCAGAG
 CCGCTGGCCAGATCTCAAGGGACATCCAGGAGCGGAACCAGGGTCTGGCACTGCCCTACACCTACCTG
 GACCTCCCCTCATTGAGAACAGCGTCTCCATC

ACGCGTACGCGGCCGCTCGAG - GFP Tag - GTTTAA

Protein Sequence: >RG212945 representing NM_021628
 Red=Cloning site Green=Tags(s)

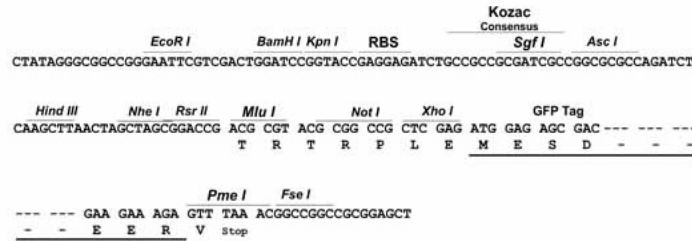
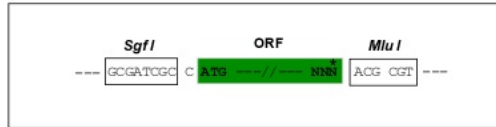
MAVYRLCVTTGPYLRAGTLDNISVTLVGTGCGESPKQLDRMGRDFAPGSVQKYKVRCTAELGELLLLRVH
 KERYAFFRKDSWYCSRICVTEPDGSVSHFPCYQWIEGYCTVELRPGTARTICQDSLPLLLDHRTRRLRAR
 QECYRWKIYAPGFPCMDVNSFQEMESDKKFALTKTTTCVDQGDSSGNRYLPGFPMKIDIPSLMYMEPNV
 RYSATKTIISLLFNAIPASLGMKLRGLLDRKGSWKKLDDMQNIFWCHKFTFTKYVTEHWCEDHFFGYQYLN
 GVPVMLHCISLPSKLPVTNDMVAPLLGQDTCLQTELERGNIFLADYWILAEAPTHCLNGRQQYVAAPL
 CLLWLSPQGALVPLAIQLSQTPGPDSPIFLPTDSEWDWLLAKTWVRNSEFLVHENNTHFLCTHLLCEAFA
 MATLRQLPLCHPIYKLLLPHTRYTLQVNTIARATLLNPEGLVDQVTSIGRQGLIYLMSTGLAHFTYTNC
 LPDSL RARGVLAIPNYHYRDDGLKIWA AIESFVSEIVGYYPSPDASVQQDSELQAWTGEIFAQAF LGRES
 SGFPSRLCTPGEMVKFLTAIIFNCSAQAHAVNSGQHDFGAWMPNAPSSMRQPPPQTKGTTTLKTYLDTLP
 EVNISCNNLLLFWLVSQEPKQRP LGTYPDEHFTEEAPRRSIAAFQSRLAQISRDIQERNQGLALPYTYL
 DPPLIENSVSI

TRTRPLE - GFP Tag - V

Restriction Sites: SgfI-MluI

Cloning Scheme:

Cloning sites used for ORF Shuttling:



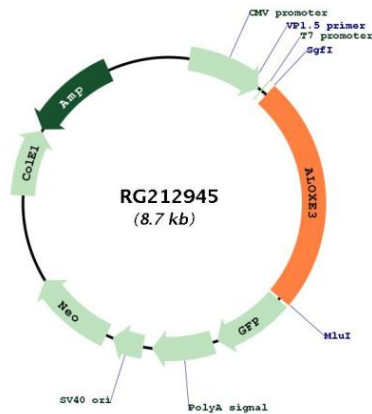
ACCN: NM_021628

ORF Size: 2133 bp

| | |
|-------------------------------|--|
| OTI Disclaimer: | <p>Due to the inherent nature of this plasmid, standard methods to replicate additional amounts of DNA in E. coli are highly likely to result in mutations and/or rearrangements. Therefore, OriGene does not guarantee the capability to replicate this plasmid DNA. Additional amounts of DNA can be purchased from OriGene with batch-specific, full-sequence verification at a reduced cost. Please contact our customer care team at custsupport@origene.com or by calling 301.340.3188 option 3 for pricing and delivery.</p> <p>The molecular sequence of this clone aligns with the gene accession number as a point of reference only. However, individual transcript sequences of the same gene can differ through naturally occurring variations (e.g. polymorphisms), each with its own valid existence. This clone is substantially in agreement with the reference, but a complete review of all prevailing variants is recommended prior to use. More info</p> |
| OTI Annotation: | This clone was engineered to express the complete ORF with an expression tag. Expression varies depending on the nature of the gene. |
| Components: | The ORF clone is ion-exchange column purified and shipped in a 2D barcoded Matrix tube containing 10ug of transfection-ready, dried plasmid DNA (reconstitute with 100 ul of water). |
| Reconstitution Method: | <ol style="list-style-type: none"> 1. Centrifuge at 5,000xg for 5min. 2. Carefully open the tube and add 100ul of sterile water to dissolve the DNA. 3. Close the tube and incubate for 10 minutes at room temperature. 4. Briefly vortex the tube and then do a quick spin (less than 5000xg) to concentrate the liquid at the bottom. 5. Store the suspended plasmid at -20°C. The DNA is stable for at least one year from date of shipping when stored at -20°C. |
| RefSeq: | NM_021628.3 |
| RefSeq Size: | 3362 bp |
| RefSeq ORF: | 2136 bp |
| Locus ID: | 59344 |
| UniProt ID: | Q9BYJ1 |
| Cytogenetics: | 17p13.1 |
| Protein Families: | Druggable Genome |

Gene Summary:

This gene is a member of the lipoxygenase family, which are catabolized by arachidonic acid-derived compounds. The encoded enzyme is a hydroperoxide isomerase that synthesizes a unique type of epoxy alcohol (8R-hydroxy-11R,12R-epoxyeicosa-5Z,9E,14Z-trienoic acid) from 12R-hydroperoxyeicosatetraenoic acid (12R-HPETE). This epoxy alcohol can activate the nuclear receptor peroxisome proliferator-activated receptor alpha (PPARalpha), which is implicated in epidermal differentiation. Loss of function of the enzyme encoded by this gene results in ichthyosis, implicating the function of this gene in the differentiation of human skin. This gene is part of a cluster of lipoxygenase genes on 17p13.1. Mutations in this gene result in nonbullous congenital ichthysiform erythroderma (NCIE). Multiple transcript variants encoding different isoforms have been found for this gene.[provided by RefSeq, Sep 2009]

Product images:


Circular map for RG212945