

Product datasheet for **RG212921**

ECHDC2 (NM_018281) Human Tagged ORF Clone

Product data:

Product Type: Expression Plasmids
Product Name: ECHDC2 (NM_018281) Human Tagged ORF Clone
Tag: TurboGFP
Symbol: ECHDC2
Mammalian Cell Selection: Neomycin
Vector: pCMV6-AC-GFP (PS100010)
E. coli Selection: Ampicillin (100 ug/mL)
ORF Nucleotide Sequence: >RG212921 representing NM_018281
Red=Cloning site Blue=ORF Green=Tags(s)

TTTTGTAATACGACTCACTATAGGGCGGCCGGAATTCGTCGACTGGATCCGGTACCGAGGAGATCTGCC
GCC**CGATCGCC**

ATGCTGCGGTTCTGTGCCTCCTGCGCCCTGGAGGCCCTTCGGGCCCGCGGCTGCGCTTCCGACGGGG
CGGCCGGGGCTCAGAGATCCAAGTGCGCGCCCTGGCGGGTCCGGACCAAGGGATCACTGAGATTCTGAT
GAACAGACCTTCTGCCCGCAATGCCTTGGGGAATGTCTTCGTCACTGAGCTGCTGGAACTCTGGCCAG
CTGCGGGAGGACCGCAAGTGCCTGTCTGCTCTTCAGAAGTGGAGTGAAGGGCGCGTTCGTGCAGGTG
CAGACCTGAAGGAGCGGGAACAGATGAGTGAAGCAGAGGTGGGGTGTTCAGCGACTCCGGGGCCT
GATGAATGACATCGCTTCTCGGCAGTCATGGGACTGATTGAGACCACGCGAGGGCTCCTCCCGGGGCA
GGAGGGACTCAGAGGCTGCCCGTTGTCTGGGGTGGCCCTGGCGAAGGAGCTCATCTTACGGCCGAC
GACTGAGTGGAACTGAGGCCACGTAAGGGCTGGTGAATCACGCTGTGGCCAGAACGAGGAGGGGA
CGCCGCTACCGCGGCACGAGCACTGGCCAGGAGATCCTGCCCGAGGCCCCATTGCCGTGCGGCTG
GGCAAAGTAGCCATTAACCGAGGAACGGAGGTGGACATTGCATCTGGGATGGCCATTGAAGGGATGTGCT
ATGCCAGAATATTCCAACCCGGGACCGGCTAGAGGGCATGGCAGCTTCAGGGAGAAGCGGACTCCAA
ATTTGTTGGCAA

ACGCGTACGCGGCCGCTCGAG - GFP Tag - GTTTAA



[View online »](#)

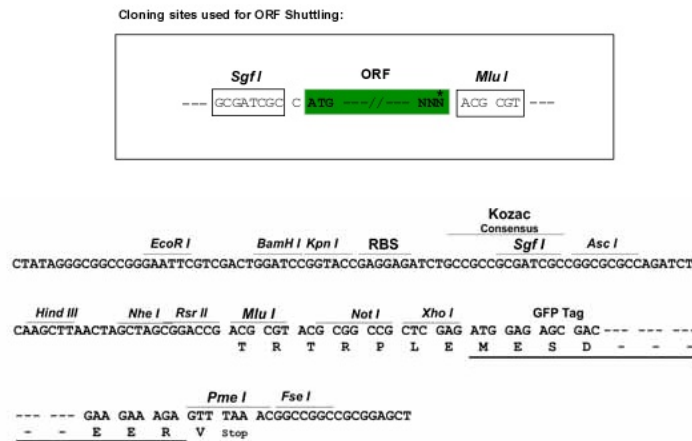
Protein Sequence: >RG212921 representing NM_018281
Red=Cloning site Green=Tags(s)

MLRVLCLLRPWRPLRARGCASDGAAGGSEIQVRALAGPDQGITEILMNRPSARNALGNVFSLELLETLAQ
 LREDRQVRVLLFRSGVKGAFCAGADLKEREQMSEAEVGVFVQRLRGLMNDIASSAVMGLIETTRGLLPGA
 GGTQRLPRCLGVALAKELIFTGRRLSGTEAHVGLVNHAVAQNEEGDAAYQARALAQEILPQAPIAVRL
 GKVAINRGTEVDIASGMAIEGMCYAQNIPTDRLEGMAAFREKRPKPFVVK

TRTRPLE - GFP Tag - V

Restriction Sites: SgfI-MluI

Cloning Scheme:



ACCN: NM_018281

ORF Size: 783 bp

OTI Disclaimer: The molecular sequence of this clone aligns with the gene accession number as a point of reference only. However, individual transcript sequences of the same gene can differ through naturally occurring variations (e.g. polymorphisms), each with its own valid existence. This clone is substantially in agreement with the reference, but a complete review of all prevailing variants is recommended prior to use. [More info](#)

OTI Annotation: This clone was engineered to express the complete ORF with an expression tag. Expression varies depending on the nature of the gene.

Components: The ORF clone is ion-exchange column purified and shipped in a 2D barcoded Matrix tube containing 10ug of transfection-ready, dried plasmid DNA (reconstitute with 100 ul of water).

Reconstitution Method:

1. Centrifuge at 5,000xg for 5min.
2. Carefully open the tube and add 100ul of sterile water to dissolve the DNA.
3. Close the tube and incubate for 10 minutes at room temperature.
4. Briefly vortex the tube and then do a quick spin (less than 5000xg) to concentrate the liquid at the bottom.
5. Store the suspended plasmid at -20°C. The DNA is stable for at least one year from date of shipping when stored at -20°C.

RefSeq: [NM_018281.1](#), [NP_060751.1](#)

RefSeq Size: 1126 bp

RefSeq ORF: 786 bp

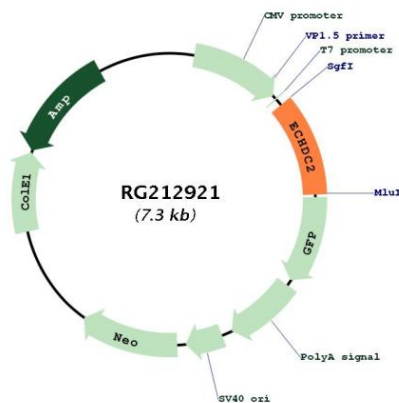
Locus ID: 55268

UniProt ID: [Q86YB7](#)

Cytogenetics: 1p32.3

Domains: ECH

Product images:



Circular map for RG212921