

Product datasheet for **RG212912**

ENTPD3 (NM_001248) Human Tagged ORF Clone

Product data:

Product Type:	Expression Plasmids
Product Name:	ENTPD3 (NM_001248) Human Tagged ORF Clone
Tag:	TurboGFP
Symbol:	ENTPD3
Synonyms:	CD39L3; HB6; NTPDase-3
Mammalian Cell Selection:	Neomycin
Vector:	pCMV6-AC-GFP (PS100010)
E. coli Selection:	Ampicillin (100 ug/mL)



[View online »](#)

ORF Nucleotide Sequence:

>RG212912 representing NM_001248
 Red=Cloning site Blue=ORF Green=Tags(s)

TTTTGTAATACGACTCACTATAGGGCGGCCGGGAATTCGTCGACTGGATCCGGTACCGAGGAGATCTGCC
 GCC**CGGATCGCC**

ATGTTCACTGTGCTGACCCGCCAACCATGTGAGCAAGCAGGCCTCAAGGCCCTCTACCGAACTCCAACCA
 TCATTGCCTTGGTGGTCTTGCTTGTGAGTATTGGTACTTGTGAGTATCACTGTATCCAGATCCACAA
 GCAAGAGGTCTCCCTCCAGGACTGAAGTATGGTATTGTGCTGGATGCCGGTCTTCAAGAACCACAGTC
 TACGTGTATCAATGGCCAGCAGAAAAAGAGAATAATACCGGAGTGGTCAGTCAAACCTTCAAATGTAGTG
 TGAAAGGCTCTGGAACTCCAGCTATGGAAATAACCCCAAGATGTCCCAGAGCCTTTGAGGAGTGTAT
 GCAAAAAGTCAAGGGCAGGTTCCATCCCACCTCCACGGATCCACCCCATTCACCTGGGAGCCACGGCT
 GGGATGCGCTTGTGAGGTTGAAAATGAAACAGCAGCTAATGAAGTCCTTGAAGCATCCAAGCTACT
 TCAAGTCCAGCCCTTTGACTTTAGGGGTGCTCAAATCATTTCTGGCAAGAAGAAGGGGTATATGGATG
 GATTACAGCCAATTTAATGGGAAATTCCTGGAGAAGAACCCTGTGGCACATGTGGTGCACCCGCAT
 GGAGTGGAAACCACGGGTGCCCTGGACTTAGGTGGTGCCTCCACCCAAATATCCTTCGTGGCAGGAGAGA
 AGATGGATCTGAACACCAGCGACATCATGCAGGTGCCCTGTATGGCTACGTATACACGCTCTACACACA
 CAGCTTCCAGTGTATGGCCGGAATGAGGCTGAGAAGAAGTTTCTGGCAATGCTCCTGCAGAATTCCT
 ACCAAAAACCATCTCACCACATCCCTGTTACCCTCGGATATAGCATCAGCTTACCATGGGCCATGTAT
 TTGATAGCCTGTGCAGTGTGACCAGAGGCCAGAAAGTTATAACCCCAATGATGTCATCACTTTGAAAGG
 AACTGGGACCCATCTCTGTGTAAGGAGAAGGTGGCTCCATATTTGACTTCAAAGCTTGCATGATCAA
 GAAACCTGTTCTTTGATGGGTTTATCAGCCAAAGATTAAAGGGCCATTTGTGGCTTTTGCAGGATTCT
 ACTACACAGCCAGTGTCTTAAATCTTTCAGGTAGCTTTTCCCTGGACACCTTCAACTCCAGCACCTGGAA
 TTTCTGCTCACAGAATTGGAGTCAGTCCCACTGCTGCTCCCAAAATTTGATGAGGTATATGCCCGCTCT
 TACTGTTCTCAGCCAACCTACATCTACCACTTGTGTGTAACGGTTACAATTACAGAGGAGACTTGGC
 CCCAAATACACTTTGAAAAAGAAGTGGGAATAGCAGCATAGCCTGGTCTCTTGGCTACATGCTCAGCCT
 GACCAACCAGATCCCAGCTGAAAGCCCTCTGATCCGTCTGCCATAGAACCACCTGTCTTTGTGGGCACC
 CTCGCTTTCTTACAGTGGCAGCCTTGTGTGCTGGCATTCTTGCATACCTGTGTTCCAGCAACCAGAA
 GAAAGAGGCACCTCCGAGCATGCCTTTGACCATGCAGTGGATTCTGAC

AG**CGGACCG**ACGCGTACGCGGCCGCTCGAG - GFP Tag - GTTTAA

Protein Sequence:

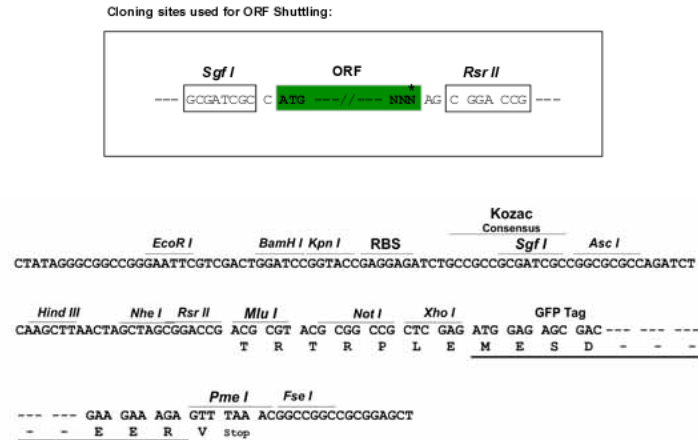
>RG212912 representing NM_001248
 Red=Cloning site Green=Tags(s)

MFTVLTRQPCEQAGLKALYRPTIIALVLLVSVIVLVSITVIQIHKQEVLPPLKYGIVLDAGSSRTTV
 YVYQWPAEKENNTGVVSQTFKCSVKSGISSYGNPQDVPRAFEECMQKVKGVPSHLHGSTPIHLGATA
 GMRLRLQNETAANEVLESIQSFKSQPFDFRGAQIIISGQEEGVYGWITANYLMGNFLEKNLWHMWVPH
 GVETTALDLGGASTQISFVAGEKMDLNTSDIMQVSLYGYVYTYTHSFQCYGRNEAEKFLAMLLQNSP
 TKNHLTNPCYPRDYSISFTMGHVFDLCTVDQRPESYNPNDVITFEGTGDPSLCKEKVASIFDFKACHDQ
 ETCSFDGVYQPKIKGPFVAFAGFYTASALNLSGSFSLDTFNSSTWNFCSQNSQLPLLLPKFDEVYARS
 YCFSANYIYHLFVNGYKFTTEETWPQIHFEKEVGNSSIAWSLGYMLSLTNQIPAESPLIRLPIEPPVFGT
 LAFFTVAALLCLAFLAYLCSATRRKRHSEHAFDHAVDSD

SGP**TRRRLE** - GFP Tag - V

Restriction Sites:

Sgfl-RsrII

Cloning Scheme:


ACCN: NM_001248

ORF Size: 1587 bp

OTI Disclaimer: The molecular sequence of this clone aligns with the gene accession number as a point of reference only. However, individual transcript sequences of the same gene can differ through naturally occurring variations (e.g. polymorphisms), each with its own valid existence. This clone is substantially in agreement with the reference, but a complete review of all prevailing variants is recommended prior to use. [More info](#)

OTI Annotation: This clone was engineered to express the complete ORF with an expression tag. Expression varies depending on the nature of the gene.

Components: The ORF clone is ion-exchange column purified and shipped in a 2D barcoded Matrix tube containing 10ug of transfection-ready, dried plasmid DNA (reconstitute with 100 ul of water).

Reconstitution Method:

1. Centrifuge at 5,000xg for 5min.
2. Carefully open the tube and add 100ul of sterile water to dissolve the DNA.
3. Close the tube and incubate for 10 minutes at room temperature.
4. Briefly vortex the tube and then do a quick spin (less than 5000xg) to concentrate the liquid at the bottom.
5. Store the suspended plasmid at -20°C. The DNA is stable for at least one year from date of shipping when stored at -20°C.

RefSeq: [NM_001248.1](#), [NP_001239.1](#)

RefSeq Size: 2797 bp

RefSeq ORF: 1590 bp

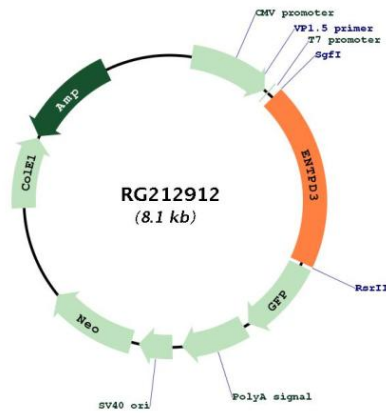
Locus ID: 956

UniProt ID: [O75355](#)

Cytogenetics: 3p22.1

Domains: GDA1_CD39
Protein Families: Transmembrane
Protein Pathways: Purine metabolism, Pyrimidine metabolism
Gene Summary: This gene encodes a plasma membrane-bound divalent cation-dependent E-type nucleotidase. The encoded protein is involved in the regulation of extracellular levels of ATP by hydrolysis of it and other nucleotides. Multiple transcript variants have been described. [provided by RefSeq, May 2014]

Product images:



Circular map for RG212912