

Product datasheet for **RG212860**

Fibronectin (FN1) (NM_054034) Human Tagged ORF Clone

Product data:

Product Type:	Expression Plasmids
Product Name:	Fibronectin (FN1) (NM_054034) Human Tagged ORF Clone
Tag:	TurboGFP
Symbol:	FN1
Synonyms:	CIG; ED-B; FINC; FN; FNZ; GFND; GFND2; LETS; MSF; SMDCF
Mammalian Cell Selection:	Neomycin
Vector:	pCMV6-AC-GFP (PS100010)
E. coli Selection:	Ampicillin (100 ug/mL)



[View online »](#)

ORF Nucleotide
Sequence:

>RG212860 representing NM_054034
Red=Cloning site Blue=ORF Green=Tags(s)

TTTTGTAATACGACTCACTATAGGGCGGCCGGGAATTCGTCGACTGGATCCGGTACCGAGGAGATCTGCC
GCCGCGATCGCC

ATGCTTAGGGGTCGGGGCCCGGGTCTGCTGCTGCTGGCCGTCCAGTGCCTGGGGACAGCGGTGCCCTCCA
CGGGAGCCTCGAAGAGCAAGAGGCAGGCTCAGCAAATGGTTCAGCCCCAGTCCCCGGTGGCTGTCAGTCA
AAGCAAGCCCGGTTGTTATGACAATGAAAACTATCAGATAAATCAACAGTGGGAGCGGACCTACCTA
GGCAATGCGTTGGTTTGTACTTGTATGGAGGAAGCCGAGTTTTAACTGCGAGAGTAAACCTGAAGCTG
AAGAGACTTGCTTTGACAAGTACTGGAACACTTACCGAGTGGGTGACACTTATGAGCGTCTAAAGA
CTCCATGATCTGGGACTGTACCTGCATCGGGCTGGGCGAGGGAGAATAAGCTGTACCATCGAAACCGC
TGCCATGAAGGGGTGAGTCTACAAGATTGGTGACACCTGGAGGAGACCACATGAGACTGGTGGTTACA
TGTTAGAGTGTGTGTCTTGGTAATGAAAAGGAGAATGGACCTGCAAGCCCATAGCTGAGAAGTGT
TGATCATGCTGCTGGGACTTCTATGTGGTCCGAGAACTGGGAGAAGCCCTACCAAGGCTGGATGATG
GTAGATTGACTTGCCTGGGAGAAGGCAGCGGACGCATCACTTGCCTTAGAAATAGATGCAACGATC
AGGACACAAGGACATCCTATAGAATTGGAGACACCTGGAGCAAGAGGATAATCGAGGAAACCTGTCCCA
GTGCATCTGCACAGGCAACGGCCGAGGAGAGTGGAAAGTGTGAGAGGCACACCTCTGTGCAGACCACATCG
AGCGGATCTGGCCCTTACCAGTGTTCGTGCAGCTGTTACCAACCGCAGCCTCACCCCGCCTCCTC
CCTATGGCCACTGTGTACAGACAGTGGTGTGGTCTACTCTGTGGGGATGCAGTGGCTGAAGACACAAGG
AAATAAGCAAATGCTTTGCACGTGCCTGGGCAACGGAGTCACTGCCAAGAGACAGCTGTAACCCAGACT
TACGGTGGCAACTCAAATGGAGAGCCATGTGTCTTACCATTACCTACAATGGCAGGACGTTCTACTCCT
GCACCACAGAAGGGCGACAGGACGACATCTTTGGTGCAGCACAACCTTGAATTATGAGCAGGACCAGAA
ATACTCTTCTGCACAGACCACACTGTTTTGGTTCAGACTCGAGGAGGAAATCCAATGGTGCCTTGTGC
CACTTCCCCTTCTATAACAACCAACAATTACTGATTGCACTTCTGAGGGCAGAAGAGACAACATGA
AGTGGTGTGGGACCACACAGAACTATGATGCCGACCAGAAGTTGGGTTCTGCCCATGGCTGCCACGA
GGAAATCTGCACAACCAATGAAGGGTCAATGTACCGCATTGGAGATCAGTGGGATAAGCAGCATGACATG
GGTCACATGATGAGGTGCACGTGTGGGAATGGTCTGGGGAATGGACATGCATTGCCTACTCGCAGC
TTCGAGATCAGTGCATTGTTGATGACATCACTTACAATGTGAACGACACATTCCACAAGCGTCATGAAGA
GGGGCACATGCTGAAGTGTACATGCTTCGGTCAAGGTCAGGGTCGGGCGAGGTGGAAGTGTATCCCGTCGACCAA
TGCCAGGATTCAGAGACTGGGACGTTTTATCAAATGGAGATTCATGGGAGAAGTATGTGCATGGTGTCA
GATACCAGTGTACTGCTATGGCCGTGGCATTGGGGAGTGGCATTGCCAACCTTTACAGACCTATCCAAG
CTCAAGTGGTCTGTGCAAGTATTTACTGAGACTCCGAGTCAAGCCAACTCCACCCATCCAGTGG
AATGCACCACAGCCATCTCACATTTCCAAGTACATTCTCAGTGGAGACCTGTGAGTATCCACCCAGAA
ACCTTGGATAC

ACGCGTACGCGGCCGCTCGAG - GFP Tag - GTTTAA

Protein Sequence: >RG212860 representing NM_054034
 Red=Cloning site Green=Tags(s)

MLRGPGLLLLLAVQCLGTAVPSTGASKSKRQAQQMVQPQSPVAVSQSKPGCYDNGKHYQINQQWERTYL
 GNALVCTCYGGSRGFNCEKPEAEETCFDKYTGNTYRVGDTYERPKDSMIWDCTCIGAGRGRISCTIANR
 CHEGGQSYKIGDTWRRPHETGGYMLECVCLGNGKGEWTKPIAEKCFDHAAGTSYVVGETWEKPYQGWM
 VDCTCLGEGSGRITCTSRNRCNDQDTRTSYRIGDTWSKKDNRGNLLQCICTGNRGEWK CERHTSVQTT
 SSGSGPFTDVRAAVYQPQPHPPYGHCVTD SGVVYSVGMQWLKTQGNKQMLCTCLGNGVSCQETA VTQ
 YGNSNGEPCVLPFTYNGRTFYSC TTEGRQDGHLCWSTTSNYEQDQKYSFCTDHTVLVQTRGNSNGALC
 HFPFLYNNHNYTDCTSEGRRDNMKWCGTTQNYDADQKFGFCPMAAHEEICTTNEGVMYRIGDQWDKQDM
 GHMMRCTCVGNRGEWTCIAYSQLRDQCI VDDITYNVNDTFHKRHEEGHMLNCTCFGQGRGRWKCDPVDQ
 CQDSETGTFYQIGDSWEKYVHGVRVYQCYCYGRGIGEWHCQPLQTYPSSSGPVEVFI TETSPNSHPIQW
 NAPQPSHISKYILRWRPVSIPRNLGY

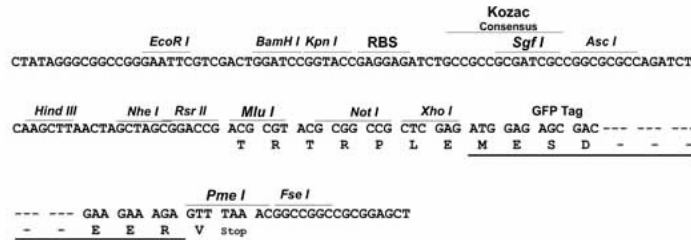
TRTRPLE - GFP Tag - V

Restriction Sites:

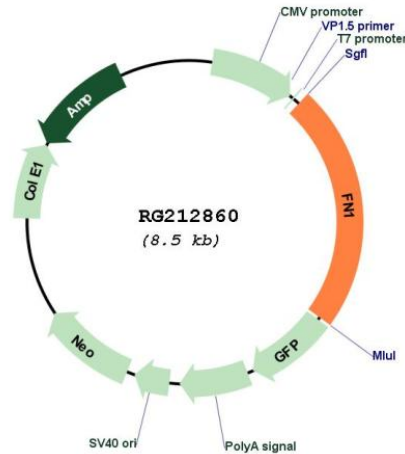
SgfI-MluI

Cloning Scheme:

Cloning sites used for ORF Shuttling:



Plasmid Map:



ACCN: NM_054034

ORF Size: 1971 bp

OTI Disclaimer: The molecular sequence of this clone aligns with the gene accession number as a point of reference only. However, individual transcript sequences of the same gene can differ through naturally occurring variations (e.g. polymorphisms), each with its own valid existence. This clone is substantially in agreement with the reference, but a complete review of all prevailing variants is recommended prior to use. [More info](#)

OTI Annotation: This clone was engineered to express the complete ORF with an expression tag. Expression varies depending on the nature of the gene.

Components: The ORF clone is ion-exchange column purified and shipped in a 2D barcoded Matrix tube containing 10ug of transfection-ready, dried plasmid DNA (reconstitute with 100 ul of water).

Reconstitution Method:

1. Centrifuge at 5,000xg for 5min.
2. Carefully open the tube and add 100ul of sterile water to dissolve the DNA.
3. Close the tube and incubate for 10 minutes at room temperature.
4. Briefly vortex the tube and then do a quick spin (less than 5000xg) to concentrate the liquid at the bottom.
5. Store the suspended plasmid at -20°C. The DNA is stable for at least one year from date of shipping when stored at -20°C.

RefSeq: [NM_054034.3](#)

RefSeq Size:	2402 bp
RefSeq ORF:	1974 bp
Locus ID:	2335
UniProt ID:	P02751
Cytogenetics:	2q35
Domains:	FN1, FN2
Protein Families:	Druggable Genome, ES Cell Differentiation/IPS, Secreted Protein
Protein Pathways:	ECM-receptor interaction, Focal adhesion, Pathways in cancer, Regulation of actin cytoskeleton, Small cell lung cancer
Gene Summary:	<p>This gene encodes fibronectin, a glycoprotein present in a soluble dimeric form in plasma, and in a dimeric or multimeric form at the cell surface and in extracellular matrix. The encoded preproprotein is proteolytically processed to generate the mature protein. Fibronectin is involved in cell adhesion and migration processes including embryogenesis, wound healing, blood coagulation, host defense, and metastasis. The gene has three regions subject to alternative splicing, with the potential to produce 20 different transcript variants, at least one of which encodes an isoform that undergoes proteolytic processing. The full-length nature of some variants has not been determined. [provided by RefSeq, Jan 2016]</p>