

Product datasheet for **RG212529**

SLC9A4 (NM_001011552) Human Tagged ORF Clone

Product data:

| | |
|---------------------------|--|
| Product Type: | Expression Plasmids |
| Product Name: | SLC9A4 (NM_001011552) Human Tagged ORF Clone |
| Tag: | TurboGFP |
| Symbol: | SLC9A4 |
| Synonyms: | NHE4 |
| Mammalian Cell Selection: | Neomycin |
| Vector: | pCMV6-AC-GFP (PS100010) |
| E. coli Selection: | Ampicillin (100 ug/mL) |



[View online »](#)

ORF Nucleotide
Sequence:

>RG212529 representing NM_001011552
Red=Cloning site Blue=ORF Green=Tags(s)

TTTTGTAATACGACTCACTATAGGGCGGCCGGAATTCGTCGACTGGATCCGGTACCGAGGAGATCTGCC
GCCGCGATCGCC

ATGGCTCTGCAGATGTTCTGACTTACAGTCTTGAATTGTTTCTACTGCTAGTGGCTCTTGAAGTGT
CTGAAGCATCTTCTGATTTGAATGAATCTGCAAATTCCTGCTCAGTATGCATCTAACGCTTGGTTTGC
TGCTGCCAGCTCAGAGCCAGAGGAAGGGATATCTGTTTTGAACTGGATTATGACTATGTCAAATTCCT
TATGAGGTCACCTCTGGATACTTCTAGCATCCCTTGCAAAAATAGGCTTCCACCTCTACCACAGGCTGC
CAGGCCTCATGCCAGAAAGCTGCCTCCTCATCCTGGTGGGGGCGCTGGTGGGCGGCATCATCTTCGGCAC
CGACCACAAAATCGCTCCGGTCATGGACTCCAGCATCTACTTCTGTATCTCTGCCACCCATCGTTCTG
GAGGGCGGCTACTTCATGCCACCCGGCCTTCTTTGAGAACATCGGCTCCATCCTGTGGTGGCAGTAT
TGGGGGCCCTGATCAACGCTTGGGCATTGGCCTCTCCCTCTACCTCATCTGCCAGTGAAGGCCTTTGG
CCTGGGCGACGTCAACCTGCTGCAGAACCTGCTGTTTCGGCAGCCTGATCTCCGCCGTGGACCCAGTGGCC
GTGCTAGCCGTGTTTGGAGAACGCGCGTGAACGAGCAGCTCTACATGATGATCTTTGGGAGGCCCTGC
TCAATGATGGCATTACTGTGGTCTTATAACAATATGTTAATTGCCTTTACAAGATGCATAAATTTGAAGA
CATAGAACTGTGACATTTTGGCTGGATGTGCCCGATTTCATCGTTGTGGGGCTTGGAGGGGATTGTTT
GGCATCGTTTTTGGATTTATTTCTGCATTTATCACACGTTTCACTCAGAAATATCTCTGCAATTGAGCCAC
TCATCGTCTTTCATGTTACGATATTTGTCTTACTTAGCTGCTGAAACCTCTATCTCTCCGGCATCCTGGC
AATCACAGCCTGCGCAGTAACAATGAAAAAGTACGTGGAAGAAAACGTGTCCAGACATCATACAGACC
ATCAAGTACTTTCATGAAGATGCTGAGCAGCGTCAGCGAGACCTTGATCTTCATCTTCATGGGTGTGCCA
CTGTGGCAAGAATCACGAGTGGAACTGGGCCTTCATCTGCTTACCCTGGCCTTCTGCCAAATCTGGAG
AGCCATCAGCGTATTTGCTCTCTTCTATATCAGTAACCGATTTTCGGACTTCCCTTCTCCATCAAGGAC
CAGTGCATCATTTTCTACAGTGGTGTCTCGAGGAGCTGGAAGTTTTTCACTTGCATTTTTGCTTCTCTGT
CTCTTTTTCTAGGAAGAAAATGTTTGTCACTGCCACTCTAGTAGTTATATACTTTACTGTATTTATTCA
GGGAATCACAGTTGGCCCTCTGGTCAGGTACCTGGATGTTAAAAAACAATAAAAAAGAATCCATCAAT
GAAGAGCTTCATATTCGCTGATGGATCACTTAAAGGCTGGAATCGAAGATGTGTGTGGGCACTGGAGTC
ACTACCAAGTGAAGACAAGTTTAAAGAAGTTTATCATAGATACTTACGGAAAATCCTCATCAGAAAGAA
CCTACCCAAATCAAGCATTGTTTCTTTGTACAAGAAGCTGGAATGAAGCAAGCCATCGAGATGGTGGAG
ACTGGGATACTGAGCTCTACAGTCTTCCATACCCCATCAGGCCAGAGGATACAAGGAATCAAAAGAC
TTTCCCTGAAGATGTGGAGTCCATAAGGGACATTCTGACATCCAACATGTACCAAGTTCGGCAAGGAC
CCTGTCCTACAACAAATACAACCTCAAACCCCAAACAAGTGAAGAGCAGGCTAAAGAGATTCTGATCCGC
CGCCAGAACACCTTAAGGGAGAGCATGAGGAAAGGTACAGCCTGCCCTGGGAAAGCCGGCTGGCACCA
AGAATATCCGCTACCTCTCCTACCCCTACGGGAATCCTCAGTCTGCAGGAAGAGACACAAGGGCTGCTGG
GTTCTCAGATGATGACAGCAGTGTCCAGGATCCCATCCATCACGTTTACGCGCATGCTCTCGGATAGGG
TCATTTCAGAAGCAAGAGGCACAAGAAAATAATACCAATGAAGAGCCTACACAGAGGAAGGAAGGCATTCA
GCTTTGGTTATCAAAGAAACACAAGCCAAGAAGAGTACTTGGGTGGAGTAAGGAGGGTGGCCTTAAGACC
CAAACCTCTGTTTCATGCAGTGGATGAGGAGGGTGTGCTGGAGGGGAGAGTGAGGGCAAGGCCTTTTG
GTTGAGGTTTCGGTCGAGGTGGACAGCTGACCATGGACACAGCAGGACCATCACAGGTCCCATAGTCCTT
TGCTCAAAAAAAA

ACGCGTACGCGGCCGCTCGAG – GFP Tag – GTTTAA

Protein Sequence: >RG212529 representing NM_001011552
Red=Cloning site Green=Tags(s)

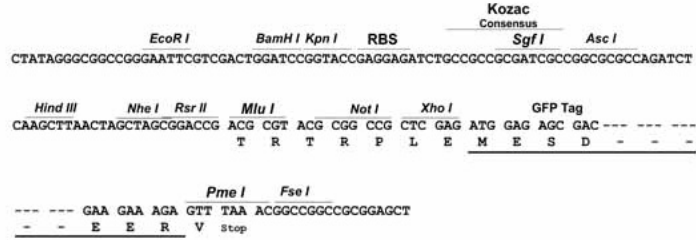
MALQMFVTYSPWNCLLLLVALECSEASSDLNESANSTAQYASNAWFAAASSEPEEGISVFELDYDYVQIP
YEVTLWILLASLAKIGFHL YHRLPGLMPESCLLILVGALVGGIIFGTDHKSPVMDSSIIYFLYLLPPIVL
EGGYFMPTRPFFENIGSILWWAVL GALINALGIGLSLYLICQVKAFGLGDVNLLQNLFGSLISAVDPVA
VLAVFEEARVNEQLYMMIFGEALLNDGITVVLYNMLIAFTKMHKFEDIETVDILAGCARFIVVGLGGVLF
GIVFGFISAFITRFTQNI SAIEPLIVFMFSYLSYLAETLYLSGILAITACAVTMKKYVEENVSQTSYTT
IKYFMKMLSSVSETLIFIFMGVSTVGKNHEWNWAFICFTLAFQCQIWRAISVFALFYISNQFRTFPFSIKD
QCIIFYSGARGAGSFLAFLPLSLFPRKMFVTATLVVIYFTVFIQGIVGPLVRYLDVKKTNKKESIN
EELHIRLMDHLKAGIEDVCGHWSHYQVRDKFKKFDHRYLRKILIRKNLPKSSIVSLYKKLEMKAEMVE
TGILSSTAFSIPHQAQRIQGIKRLSPEDVESIRDILTSNMYQVRQRTL SYNKYNLKPQTSEKQAKEILIR
RQNTLRESMRKGHSLPWGKPAGTKNIRYLSYPYGNPQSAGRDTRAAGFSDDSSDPGSPSITFSACSRIG
SLQKQEAQEIIIPMKSLHRGRKAFSFGYQRNTSQEEYLGGVRRVALRPKPLFHAVDEEGESGGESEKASL
VEVRSRWTADHGHSRDHHRSHSPLLQKK

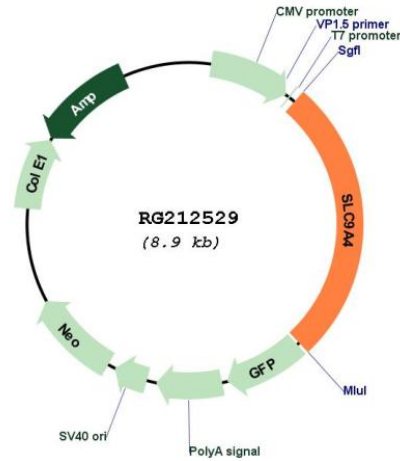
TRTRPLE - GFP Tag - V

Restriction Sites: Sgfl-Mlul

Cloning Scheme:

Cloning sites used for ORF Shutting:



Plasmid Map:


ACCN: NM_001011552

ORF Size: 2394 bp

OTI Disclaimer: The molecular sequence of this clone aligns with the gene accession number as a point of reference only. However, individual transcript sequences of the same gene can differ through naturally occurring variations (e.g. polymorphisms), each with its own valid existence. This clone is substantially in agreement with the reference, but a complete review of all prevailing variants is recommended prior to use. [More info](#)

OTI Annotation: This clone was engineered to express the complete ORF with an expression tag. Expression varies depending on the nature of the gene.

Components: The ORF clone is ion-exchange column purified and shipped in a 2D barcoded Matrix tube containing 10ug of transfection-ready, dried plasmid DNA (reconstitute with 100 ul of water).

Reconstitution Method:

1. Centrifuge at 5,000xg for 5min.
2. Carefully open the tube and add 100ul of sterile water to dissolve the DNA.
3. Close the tube and incubate for 10 minutes at room temperature.
4. Briefly vortex the tube and then do a quick spin (less than 5000xg) to concentrate the liquid at the bottom.
5. Store the suspended plasmid at -20°C. The DNA is stable for at least one year from date of shipping when stored at -20°C.

RefSeq: [NM_001011552.2](#)

RefSeq Size: 4165 bp

RefSeq ORF: 2397 bp

Locus ID: 389015

UniProt ID: [Q6AI14](#)

Cytogenetics: 2q12.1

Protein Families: Druggable Genome, Transmembrane

Gene Summary: Involved in pH regulation to eliminate acids generated by active metabolism or to counter adverse environmental conditions. Major proton extruding system driven by the inward sodium ion chemical gradient. Plays an important role in signal transduction. May play a specialized role in the kidney in rectifying cell volume in response to extreme fluctuations of hyperosmolar-stimulated cell shrinkage. Is relatively amiloride and ethylisopropylamiloride (EIPA) insensitive. Can be activated under conditions of hyperosmolar-induced cell shrinkage in a sustained intracellular acidification-dependence manner. Activated by 4,4'-diisothiocyanostilbene-2,2'-disulfonic acid (DIDS) in a sustained intracellular acidification-dependence manner. Affects potassium/proton exchange as well as sodium/proton and lithium/proton exchange. In basolateral cell membrane, participates in homeostatic control of intracellular pH, and may play a role in proton extrusion in order to achieve transepithelial HCO₃⁻ secretion. In apical cell membrane may be involved in mediating sodium absorption. Requires for normal levels of gastric acid secretion, secretory membrane development, parietal cell maturation and/or differentiation and at least secondarily for chief cell differentiation (By similarity).[UniProtKB/Swiss-Prot Function]