

Product datasheet for **RG212462**

Filamin C (FLNC) (NM_001458) Human Tagged ORF Clone

Product data:

Product Type:	Expression Plasmids
Product Name:	Filamin C (FLNC) (NM_001458) Human Tagged ORF Clone
Tag:	TurboGFP
Symbol:	Filamin C
Synonyms:	ABP-280; ABP280A; ABPA; ABPL; CMH26; FLN2; MFM5; MPD4; RCM5
Mammalian Cell Selection:	Neomycin
Vector:	pCMV6-AC-GFP (PS100010)
E. coli Selection:	Ampicillin (100 ug/mL)
ORF Nucleotide Sequence:	>RG212462 representing NM_001458 Red=Cloning site Blue=ORF Green=Tags(s)

TTTTGTAATACGACTCACTATAGGGCGGCCGGAATTCGTCGACTGGATCCGGTACCGAGGAGATCTGCC
GCC**CGATCGCC**

ATGATGAACAACAGCGGCTACTCAGACGCCGGCCTCGGCCTGGGCGATGAGACAGACGAGATGCCGTCCA
CGGAGAAGGACCTGGCGGAGGACGCGCCGTGGAAGAAGATCCAGCAGAACACATTCACGCGCTGGTGCAA
TGAGCACCTCAAGTGCCTGGGCAAGCGCCTGACCGACCTGCAGCGCGACCTCAGCGACGGGCTCCGGCTC
ATCGCGCTGCTCGAGGTGCTCAGCCAGAAGCGCATGTACCGCAAGTTCCATCCGCGCCCCAACTTCCGCC
AAATGAAGCTGGAGAACGTGTCCTGGCCCTCGAGTTCCTCGAGCGCGAGCACATCAAGCTCGTGTCCAT
AGACAGCAAGGCCATCGTGGATGGGAACCTGAAGCTGATCCTGGGCCGTGATCTGGACGCTGATCCTGCAC
TACTCCATCTCCATGCCATGTGGGAGGATGAAGATGATGAGGATGCCCGCAAACAGACGCCCAAGCAGC
GGCTGCTTGGCTGGATCCAGAACAAGGTGCCCCAGCTGCCCATCACCAACTTCAACCGTGACTGGCAGGA
CGGCAAAGCTCTGGGCGCCCTGGTGGACAACTGCGCCCCGGTCTCTGCCCGACTGGGAGGCTGGGAC
CCCAACCAGCCCGTGGAGAACGCCCGGGAGGCCATGCAGCAGGCCGACGACTGGCTTGGGGTGGCCAGG
TCATTGCCCTGAGGAGATTGTGGACCCCAACGTGGATGAGCATTCTGTTATGACCTACCTGTCCAGTT
CCCCAAGGCCAAGCTCAAACCTGGTGCCCTGTTCGATCCAAGCAGCTGAACCCCAAGAAAGCCATCGCC
TATGGCCCTGGCATCGAGCCACAGGGCAACACCGTGTGCAGCCTGCCACTTCCCGTGCAGACGGTGG
ACGCGGGCGTGGGCGAGGTGCTGGTCTACATCGAGGACCCTGAAGGCCACACCGAGGAGGCTAAGGTGGT
TCCCAACAATGACAAGGATCGCACCTATGCTGTCTCTATGTGCCCAAGGTGCTGGGTTACACAAGGTG
ACCGTGTCTTTGCTGGCCAGAACATTGAACGCAGTCCCTTTGAGGTGAACGTGGGCATGGCCCTGGGAG
ATGCCAACAAGGTGTCAGCCCGTGGCCCTGGCCTGGAACCTGTGGGCAATGTGGCCAACAACCCACCTA
CTTTGACATCTACACTGCGGGGGCCGGCACTGGCGATGTTGCTGTGGTATCGTGGACCCACAGGGCCGG
CGGGACACAGTGGAGGTGGCCCTGGAGGACAAGGGTGACAGCACGTTCCGCTGCACATACAGACCTGCCA
TGGAGGGGCCACATACCGTGCATGTGGCCTTTGCGGGTGCCCCATCACCAGCAGTCCCTCCCTGTCCA
TGTGTCGAAGCCTGTAACCCCAACGCCTGCCGCGCCTCTGGGCGAGGCTGCAGCCAAGGGTGTTCGC



[View online »](#)

GTGAAAGAGGTGGCTGACTTCAAGGTGTTACCAAGGGTGCCGGCAGCGGGGAGCTCAAGGTCACGGTCA
 AGGGGCCAAAGGGCACAGAGGAGCCAGTGAAGGTGCGGGAGGCTGGGGATGGTGTGTTCCAGTGCAGTA
 CTACCCGGTGGTGCCTGGGAAGTATGTGGTGACCATCAGTGGGGCGGCTACGCCATCCCTCGCAGCCCC
 TTTGAGGTACAGGTGAGCCCAGAGGCAGGAGTGCAAAAGGTCCGGGCTGGGGTCTGGTTTGGAGACTG
 GCCAGGTGGGCAAGTCAAGCCATTTTGTGGTGAAGCCATTGGCACCGAGGTGGGGACACTGGGCTTCTC
 CATCGAGGGGCCCTCACAAGCCAAGATCGAATGTGACGACAAGGGGGATGGCTCTGCGATGTCCGTTAC
 TGGCCACGGAGCCTGGGGAGTACGCTGTGCACGTCTGTGACGATGAGGACATCCGAGACTCACCT
 TCATTGCCACATCTGCCCGCCCCACCTGACTGCTTCCAGATAAGGTGAAGGCCCTTGGGCTGGCCT
 GGAGCCTACCGGCTGCATCGTGGACAAGCCCGCTGAGTTCACCATTGATGCTCGTGCAGCTGGCAAGGGA
 GACCTGAAGTCTATGCCAGGACGCCGACGGCTGTCCCATCGACATCAAGGTGATCCCCAACGGCGACG
 GCACCTTCCGCTGCTCCTACGTGCCACCAAGCCATTAAGCACACCATCATCATCTCTGGGGAGGCGT
 AAACGTGCCAAAGAGCCCTTCCGGGTGAACGTGGGCGAGGGCAGCCACCCCGAGCGGTAAAGGTGAC
 GGCCCCGAGTGGAGAAGACAGGCCTCAAGGCCAATGAGCCACCTACTCACGGTGGACTGCAGCGAGG
 CGGGGCAAGGCGACGTGAGCATCGGCATCAAGTGCGCCAGGCGTGGTGGGCCCTGCAGAGGCTGACAT
 TGACTTCGACATCATCAAGAATGACAACGACACCTTACCCTCAAGTACAGCCACCAGGGGCGGGCCGC
 TACACCATCATGGTGTGTTTGCCAACAGGAGATCCCCGCCAGCCCTTCCACATCAAGGTGGACCCAT
 CCCACGATGCCAGCAAAGTCAAGGCCGAGGGCCCTGGGCTGAATCGCACAGGTGTGGAAGTCGGGAAGCC
 CACCCACTTACGGTGTGACCAAGGGAGCCGGCAAGGCCAAGCTGGATGTGCAGTTTGCAGGGACAGCC
 AAGGGCGAGGTTGTGCGGGACTTTGAGATCATAGACAACCATGACTACTCCTACACTGTCAAGTACACCG
 CTGTCCAGCAGGGCAACATGGCAGTGACAGTGACTTATGGCGGGGACCCTGTCCCAAGAGCCCTTTGT
 GGTGAATGTGGCACCCCGCTGGACCTCAGCAAATCAAAGTTCAGGGCCTTAATAGCAAGGTGGCTGTG
 GGACAGGAACAAGCATTTCTGTGAACACAGAGGGCTGGCGGTGAGGGCAACTGGATGTGCGGATGA
 CTTCCGCTTCTCGCCGGCCATCCCTGCAAGCTGGAGCCAGGCGGTGGAGCGGAAGCCAGGCTGTGCG
 CTACATGCCCCCGAGGAGGGGCCCTACAAGGTGGATATCACCTACGATGGTACCCTGGCTGGCAGC
 CCGTTTGTGTGGAGGTTGCTGCCCCCTGATCCCTCCAAGGTCTGTGCTTATGGCCCGGGTCTCAAGG
 GTGGACTGGTAGGCACCCCGCGCCATTCTCCATCGACACCAAGGGGGTGGCACAGGTGGCCTGGGGCT
 GACCGTAGAGGGCCCTGCGAGGCCAAGATCGAGTGCCAGGACAATGGTGTGGTGTGCTGTGCTGTGAGC
 TACCTGCCACGGAGCCTGGCGAGTACACCATCAACATCTGTTTGTGAGGCCACATCCCTGGCTCGC
 CCTTCAAAGCCACCATTCGGCTGTGTTTACCCGAGCAAGGTGCGGGCCAGTGGACCGGGCTGGAGCG
 CGGCAAGGTGGTGGAGGACCCACCTTCACTGTGGACTGCTCAGAGGCAGGCGAGGCGGAGCTGACCATT
 GAGATCCTGTGCGATGCCGGGTCAAGGCCGAGGTGCTGATCCACAACAACGCGGATGGCACCTACCACA
 TCACCTACAGCCCTGCCTTCCCTGGCACCTACACCATTACCATCAAGTATGGCGGGCATCCCGTGGCCAA
 ATTCCCCACCCGTGCCATGTGCAGCCTGCGGTGATACCAAGTGGCGTCAAGGTCTCAGGGCCTGGTGT
 GAGCCACACGGTGTCTGCGGGAGGTGACCACTGAGTTCACTGTGGATGCAAGATCCCTAACAGCCACAG
 GCGGCAACCACGTGACGGCTCGTGTGCTCAACCCCTCGGGGGCAAGACAGACACCTATGTGACAGACAA
 TGGGGACGGCACCTACCGAGTGCAGTACCCGCTACGAGGAGGGCGTGCATCTGGTGGAGGTCCTGTAT
 GATGAGGTGCTGTGCCAAGAGCCCTTCCGAGTGGGCGTGACCGAGGGCTGTGATCCCACCCCGTCC
 GAGCCTTCGGGCCAGGCTGGAGGTTGGCTTGGTCAACAAGGCCAACCATTCACTGTGGAGACAGGGG
 AGCGGGCACCGGGCCCTTGGCCTAGCCATCGAGGTCCTCGGAAGCCAAGATGTCCTGCAAGGACAAC
 AAGGATGGTAGCTGCACCGTGGAGTACATCCCCTTCACTCCTGGAGACTATGACGTCAACATCACCTTCG
 GGGGGCGGCCATCCCAGGGAGCCGTTCCGCGTGCCAGTGAAGGATGTGGTGGACCCTGGGAAGGTGAA
 GTGCTCAGGGCCAGGCTGGGGCTGGTGTGAGGGCCCGGTTTCTCAGACCTTACAGTGGACTGCAGT
 CAAGCTGGCCGGGCGCCCTGCAGGTGGCTGTGCTGGGCCACAGGTGTGGCCGAGCCTGTGGAGGTGC
 GGGACAATGGAGATGGCACCCACACTGTCCACTACACCCAGCCACTGACGGGCCCTACACGGTAGCCGT
 CAAGTATGCTGACCAGGAGGTGCCACGCAGCCCTTCAAGATCAAGTCTCCAGCTCATGATGCCAGC
 AAGGTGCGGGCCAGCGGCCAGGCTCAACGCCTCTGGCATCCCTGCCAGCCTGCCTGTGGAGTTACCA
 TCGACGCACGGGACGCGGGCAGGGGTTGCTCACTGTCCAGATCTTGGACCCGAGGGTAAGCCAAAGAA
 GGCCAACATCCGGGACAATGGGGATGGCAGTACACTGTGCTCCTACCTGCCGGACATGAGTGGCCGGTAC
 ACCATCACCATCAAGTATGGCGGTGATGAGATCCCTACTCGCCCTTCCGCATCCATGCTGTGCCACTG
 GGGATGCCAGCAAGTGCCTCGTACAGTGTCCATTGGAGGCCATGGCCTGGGTGCCTGCCTGGGCCCTCG
 AATCCAGATTGGGCAGGAGACGGTATCACGGTGGATGCCAAGGCAGCCGGTGGGGGAAGGTGACATGC
 ACGGTGTCCACGCCGATGGGGCAGAGCTCGATGTGGATGTGGTTGAGAACCATGACGGTACCTTTGACA

TCTACTACACAGCGCCCGAGCCGGGCAAGTACGTATCACCATCCGCTTCGGGGGTGAGCACATCCCCAA
 CAGCCCCTTCCACGTGCTGGCGTGTGACCCCCTGCCGCACGAGGAGGAGCCCTCTGAAGTGCCACAGCTG
 CGCCAGCCCTACGCTCCTCCCGGCCGGCGCCGCCACACACTGGGCCACAGAGGAGCCAGTGGTGC
 CTGTGGAGCCAATGGAGTCCATGCTGAGGCCCTTCAACCTGGTCATCCCCTTCGCGGTGCAGAAAGGGGA
 GCTCACAGGAGAGGTGCGGATGCCCTCGGGGAAGACGGCACGGCCCAACATCACCAGCAACAAGGACGGC
 ACCATCACGGTGAGGTATGCACCCACTGAGAAAGGCCTGCACCAGATGGGGATCAAGTATGACGGCAACC
 ACATCCCTGGGAGCCCTTACAGTTCTATGTGGATGCCATCAACAGCCGCCATGTCAGTGCCTATGGGCC
 AGGCCTGAGCCATGGCATGGTCAACAAGCCAGCCACCTTCACTATTGTCACCAAAGATGCTGGAGAAGGG
 GGTCTGTCACTGGCCGTGGAGGGCCCATCCAAGGCAGAGATCACCTGTAAGGACAACAAGGATGGCACCT
 GCACCGTGTCTATCTGCCGACTGCGCCTGGAGACTACAGCATCATCGTGCCTTCGATGACAAGCACAT
 CCCGGGGAGCCCTTACAGCCAAGATCACAGGTGATGACTCCATGAGGACCTCACAGCTGAATGTGGGC
 ACCTCCACGACGTGCTCACTGAAGATCACGAGAGTGTCTGAGCCAGCTGACCGCCAGCATCCGTGCC
 CCTCGGCAACGAGGAGCCCTGCCTGCTGAAGCGCCTGCCAACCAGGCACATTGGGATCTCCTTACCCC
 CAAGGAGGTGGGGAGCACGTGGTGAAGCGCCTGCCAACCAGGCACATTGGGATCTCCTTACCCC
 ATCCTGGTGGGGCCATCTGAGATCGGGGACGCCAGCAAGGTGCGGGTCTGGGGCAAGGGGCTTCCGAGG
 GACACACATTCCAGGTGGCAGAGTTCATCGTGGACACTCGCAATGCAGGTTATGGGGGCTTGGGGCTGAG
 TATTGAAGGCCAAGCAAGGTGGACATCAACTGTGAGGACATGGAGGACGGGACATGCAAAGTCACTAC
 TGCCCCACCGAGCCCGGCACCTACATCATCAACATCAAGTTTGCTGACAAGCACGTGCCTGGAAGCCCT
 TCACTGTGAAGGTGACCGGCGAGGGCCGCATGAAGGAGAGCATCACCCGGCGGAGACAGGCACCTTCCAT
 CGCCACCATCGGCAGCACCTGTGACCTCAACCTCAAGTCCCAGGAACTGGTCCAGATGGTGTCTGCC
 CAGGAGCGCCTGACACGCACCTTACACGCAGCAGCCACCTACACCCGCACGGAGCGCACGGAGATCA
 GCAAGACGCGGGCGGGGAGACAAGCGCGAGGTGCGGGTGGAGGAGTCCACCCAGTTCGCGGACCC
 TTCCCTGCTGTGTTGGGGACTTCTGGGCGGGAGCGCCTGGGATCCTTCGGCAGCATCACCCGGCAG
 CAGGAGGTGAGGCCAGCTCTCAGGACATGACTGCACAGGTGACCAGCCCATCGGGCAAGGTGGAAGCCG
 CAGAGATCGTCGAGGGCAGGACAGCGCTACAGCGTGCCTTTGTGCCAGGAATGGGGCCCATAC
 GGTGCTGTCAAGTACCGTGGCCAGCACGTGCCCGGCAGCCCTTTCAGTTCACTGTGGGCCGCTGGGT
 GAAGGTGGTGCCACAAGGTGCGGGCCGGAGGCACAGGGCTGGAGCGAGGTGTGGCCGGCTGCCAGCCG
 AGTTCAGCATCTGGACCCGGGAGGCTGGCGCTGGGGCCGTCCATTGCTGTGGAGGTCCTAGCAAAGC
 GGAGATTGCATTTGAGGATCGCAAAGATGGCTCCTGCGGCGTCTCCTATGTCGTCCAGGAACCAGGTGAC
 TATGAGGTCTCCATCAAGTTCATGATGAGCACATCCCAGACAGCCCTTTGTGGTGCCTGTGCCCTCCC
 TCTCGGATGACGCTCGCCGTCTCACTGTACCAGCCTCCAGGAGACGGGGCTCAAGGTGAACCAGCCAGC
 GTCCTTTGCCGTGCAGCTGAACGGTGCCCGGGGGTATTGATGCCCGGGTGCACACACCCCTCGGGGGCT
 GTGGAGGAGTGCTACGTCTGTGAGCTGGACAGTGACAAGCACACCATCCGCTTATCCCCACGAGAATG
 GCGTCCACTCCATCGATGTCAAGTTCACCGGTGCCACATCCCTGGAAGTCCCTTCAAGATCCGCGTTGG
 GGAGCAGAGCCAGGCTGGGGACCCAGGCTTGGTGTGAGCCTACGGTCTGGGGCTCGAGGGAGGCACTACC
 GGTGTGTCATCAGAGTTCATCGTGAACACCCTGAATGCCGGCTCGGGGGCCTTGTCTGTACCATTGATG
 GCCCTCCAAGGTGCAGCTGGACTGTCCGGAGTGTCTGAGGGCCATGTGGTCACTATACTCCCATGGC
 CCCTGGCAACTACCTCATTGCCATCAAGTACGGTGGCCCCAGCACATCGTGGGAGCCCTTCAAGGCC
 AAGGTCACTGGTCCGAGGCTGTCCGGAGGCCACAGCCTTACGAAACATCCACGGTCTGGTGGAGACTG
 TGACCAAGTCTCCTCAAGCCGGGGCTCCAGCTACAGCTCCATCCCAAGTTCCTCTCAGATGCCAGCAA
 GGTGGTACTCGGGGCCCTGGGCTGTCCAGGCCCTTCGTGGGCCAGAAGAACTCCTTACCGTGGACTGC
 AGCAAAGCAGGCACCAACATGATGATGGTGGCGTGCACGGCCCCAAGACCCCTGTGAGGAGGTGTACG
 TGAAGCACATGGGGAACCGGGTGTACAATGTCACCTACACTGTCAAGGAGAAAGGGGACTACATCCTCAT
 TGTCAAGTGGGGTACGAAAGTGTCCCTGGAAGCCCTTCAAAGTCAAGGTCCCT

ACGCGTACGCGGCCGCTCGAG – GFP Tag – GTTTAA

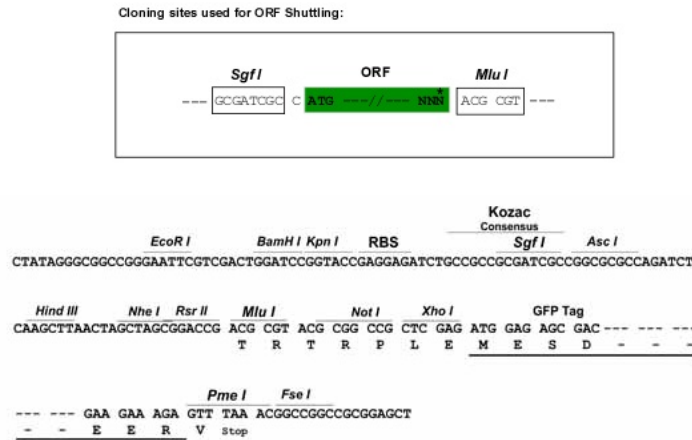
Protein Sequence: >RG212462 representing NM_001458
 Red=Cloning site Green=Tags(s)

```

MMNNSGYS DAGLGLGDETDEMPSTEKDLAEDAPWKKIQQNTFTRWCNEHLKCVGKRLTDLQRDLSDGLRL
IALLEVL SQKRM YRKFHPRPNFRQMKLE NVSVALEFLEREHIKLVSIDSKAIVDGNLKLILGLIWTILH
YSISMPMWEDEDEDARKQTPKQRL LGWIQNKVPQLPITNFNRDWQDGKALGALV DNCAPGLCPDWEAWD
PNQPVENAREAMQQADDWL GVPQVIAPEEIVDPNVDEHSVMTYLSQFPKAKLKP GAVRSKQLNPKKAI A
YGP GIEPQGN TVLQPAHFTVQTVDAGVGEVLVYIEDPEGHTEEAKVVPNNDKDRYAVSVYPKVAGLHKV
TVL FAGQNIERSPF EVNVGMALGDANKVSARGPGL EPVGNVANKPTYFDIYTAGAGTGDVAVVIVDPQGR
RDTVEVALEDKGDSTFRCTYRPAMEGPHTVHVA FAGAPI TRSPFPVHVSEACNP NACRASGRGLQPKGVR
VKEVADFKVFTKGAGSGELKVTVKGPKGTEEPVKVREAGDGVFECEYYPVPGKYVVTITWGGYAI PRSP
FEVQVSPEAGVQK VRAWGPGL ETGQVGKSADFVVEAIGTEVGT L GFSIEGPSQAKIECDDKGDGSDVRY
WPTPEGEYAVHVICDDEDIRDSPFIAHILPAPPDCFPDKVKAFGPGLEPTGCIVDKPAEFTIDARAAGK
DLKLYAQDADGCPIDIKVIPNGDGTFRCSYVPTKPIKHTIIISWGGVNVPKSPFRVNVGEGSHPERVKVY
GPGVEKTGLKANEPTYFTVDCSEAGQGDV SIGIKCAPGVVGP AEADIDFDI IKNDNTFTVKYTPPGAGR
YTIMVLFANQEIPASPFHIKVDPSHDASKVKAEGPGLNRTGVEVGKPTHFTVLTGAGKAKLDVQFAGTA
KGEVVRDFEIIDNHDSYTVKYTAVQQGNMAVTVTYGGDPV PKSPFVNVNAPPLDL SKIKVQGLNSKVAV
GQEQA FSVNTRGAGGQGLDVRMTSPSRPIPCKLEPGGGA EAQAVRYPPEEGPYKVDITYDGHVPVGS
PFAVEGVLPPDP SKVCA YGPG LKGLVGT PAFS IDTKGAGTGG LGLTVEGPCEAKIECQDNGDGS CAVS
YLPTEPEGEY TINILFAEAH IPGSPFKATIRPVFDPSKVRASG PGLERKGVGEAATFTVDCSEAGEAELTI
EILSDAGVKA EVL IHNADGTYHITYSPAFPGTYTITIKYGGHPVKFPTRVHVQPAVDTSGVKVS GPGV
EPHGV LREVTT EFTVDARSLTATGGNHVTARV LNPSGAKTDTYVTDNGDGT YRVQYTA YEEGVHLVEVLY
DEVAVPKSPFRVGVTEGCDPTRVRAFPGLEGLVNKANRFTVETRGAGTGG LGLAIEG PSEAKMSCKDN
KDG SCTVEYI PFP TPGDYD VNITFGGRPIPGSPFRVPVKDVDPGKVKCSG PGLGAGVRARVPQTF TVDCS
QAGRAPLQVAVL GPTGVAEPVEVRDNGDGTHTVHYTPATDGPYTVAVKYADQEVPRSPFKIKVLP AHDAS
KVRASG PGLNASGIPASLPVEFTIDARDAGEGLLTVQILDPEGKPKKANIRDNGDGT YTVSYLPDMSGRY
TITIKYGGDEIPYSPFRIHALPTGDASKCLVTVSIGGHGLGACLGPRIQIQETVITVDAKAAGEGKVT C
TVSTPDGAELD VDVVENHDGTFDIYYTAPEPGKYVITIRFGGEHIPNSPFHVLACDPLPHEE PSEVPQL
RQPYAPPRPGARPTHWATEEPVVPVEMESMLRPFNLVIPFAVQKGELTGEVRMPSGKTARPNITDNKDG
TITVRYAPTEKGLHQMGIKYDGNH IPGSPLQFYVDAINS RHVSAYG PGLSHGMVNK PATFTIVTKDAGEG
GLSLAVEGPSKAEITCKDNKDGCTVSYLPTAPGDYSIIIVRFDDKHIPGSPFTAKITGDDSMRTSQLNVG
TSTDVSLKITESDLSQLTASIRAPSGNEEPCLL KRLPNRHIGISF TPKEVGEHVVSVRKSGKHVTNSPFK
ILVGPSEIGDASKVRVWGKGLSEGHTFQVAE FIVDTRNAGYGG LGLSIEGPSKVDINCEDMEDGTCKVTY
CPTPEPTYIINIKFADKHVPGSPFTVKVTGEGRMKESITRRRQAPSIATIGSTCDLNLKIPGNWFQMVSA
QERL TRTFTRSSH TYTRTERTEISKTRGGETKREVRVEESTQVGGDPFP AVFGDFLGRERLGSFGSITRQ
QEGEASSQDMTAQV TSPSGKVEAAEIVEGEDSAYSVRFPQEMGPHTVAVKYRQGHVPGSPFQFTVGPLG
EGGAHKVRAGGTGLERGVAGVPAEFSIWTREAGAGGLSIAVEGPSKAEIAFEDRDKGSCGVS YVQEPGD
YEYSIKFNDEHIPDSPFVVPVASL SDDARRLTVTSLQETGLKVNQ PASFAVQLNGARGVIDARVHTPSGA
VEECYVSELDSKHTIRFIPHENGVH SIDVKFNGAHIPGSPFKIRVGEQS QAGDPGLVSAYGPLEGGTT
GVSSEFIVNTLNAGSGALSVTIDGPSKVQLD CRECEGHVVTYTPMAPGNYLIAIKYGGPQHIVGSPFKA
KVTGPRLSGHSLHETSTVLVETVTKSSSRGSSYSSIPK FSSDASKVVTRGPGLSQAFVQKNSFTVDC
SKAGTNMMMGVHGPKTPCEEVYVKHMGNRVYNVYTYVKEKGDYILIVKWGDESVPGPSPFKVKVP
  
```

TRTRPLE - GFP Tag - V

Restriction Sites: Sgfl-MluI

Cloning Scheme:


ACCN: NM_001458

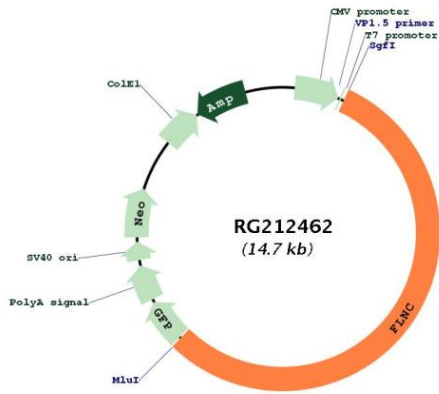
ORF Size: 8175 bp

OTI Disclaimer: Due to the inherent nature of this plasmid, standard methods to replicate additional amounts of DNA in E. coli are highly likely to result in mutations and/or rearrangements. Therefore, OriGene does not guarantee the capability to replicate this plasmid DNA. Additional amounts of DNA can be purchased from OriGene with batch-specific, full-sequence verification at a reduced cost. Please contact our customer care team at custsupport@origene.com or by calling 301.340.3188 option 3 for pricing and delivery.

The molecular sequence of this clone aligns with the gene accession number as a point of reference only. However, individual transcript sequences of the same gene can differ through naturally occurring variations (e.g. polymorphisms), each with its own valid existence. This clone is substantially in agreement with the reference, but a complete review of all prevailing variants is recommended prior to use. [More info](#)

OTI Annotation:	This clone was engineered to express the complete ORF with an expression tag. Expression varies depending on the nature of the gene.
Components:	The ORF clone is ion-exchange column purified and shipped in a 2D barcoded Matrix tube containing 10ug of transfection-ready, dried plasmid DNA (reconstitute with 100 ul of water).
Reconstitution Method:	<ol style="list-style-type: none">1. Centrifuge at 5,000xg for 5min.2. Carefully open the tube and add 100ul of sterile water to dissolve the DNA.3. Close the tube and incubate for 10 minutes at room temperature.4. Briefly vortex the tube and then do a quick spin (less than 5000xg) to concentrate the liquid at the bottom.5. Store the suspended plasmid at -20°C. The DNA is stable for at least one year from date of shipping when stored at -20°C.
RefSeq:	<u>NM_001458.4</u> , <u>NP_001449.3</u>
RefSeq Size:	9146 bp
RefSeq ORF:	8178 bp
Locus ID:	2318
UniProt ID:	<u>Q14315</u>
Cytogenetics:	7q32.1
Protein Pathways:	Focal adhesion, MAPK signaling pathway
Gene Summary:	This gene encodes one of three related filamin genes, specifically gamma filamin. These filamin proteins crosslink actin filaments into orthogonal networks in cortical cytoplasm and participate in the anchoring of membrane proteins for the actin cytoskeleton. Three functional domains exist in filamin: an N-terminal filamentous actin-binding domain, a C-terminal self-association domain, and a membrane glycoprotein-binding domain. Two transcript variants encoding different isoforms have been found for this gene. [provided by RefSeq, Jul 2008]

Product images:



Circular map for RG212462